

KD-Validated Anti-Dynamin 1 Recombinant Rabbit Monoclonal Antibody



Catalog #: 61150

Aliases

DNM1; Dynamin 1; DNM; EC 3.6.5.5; Dynamin-1; DEE31A; DEE31B; EIEE31; DEE31

Background

Gene Name: DNM1

NCBI Gene Entry: [1759](#)

UniProt Entry: [Q05193](#)

Application Information

Molecular Weight: Predicted, 97 kDa, observed, 97 kDa

Clonality: Rabbit monoclonal antibody

Clone ID: 24GB5985

Species Reactivity: Human, mouse, rat

Applications Tested: Western blotting (WB), immunocytochemistry (IC)

Immunogen

A synthesized peptide derived from human Dynamin 1

Isotype

Rabbit IgG

Storage Buffer

Supplied in PBS (pH 7.4) containing 50% glycerol, and 0.02% sodium azide.

Storage

Store at -20 °C for one year.

Recommended Dilutions

Western Blotting (WB): 1:1,000-1:5,000

Immunocytochemistry (IC): 1:100-1:1,000

Note: This product is for research use only.

Validation Data

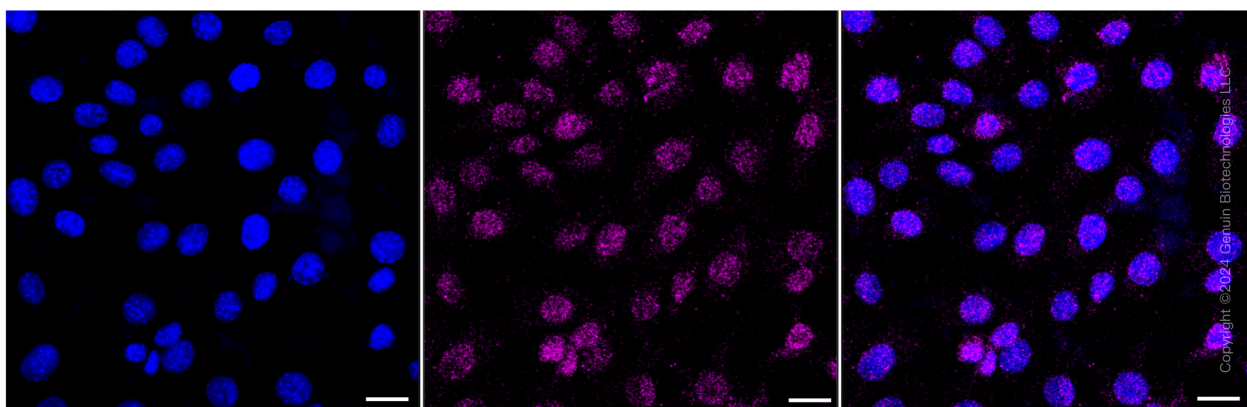
SUPPORT

SUPPORT@GENUINBIOTECH.COM
TEL: +1-540-855-7041

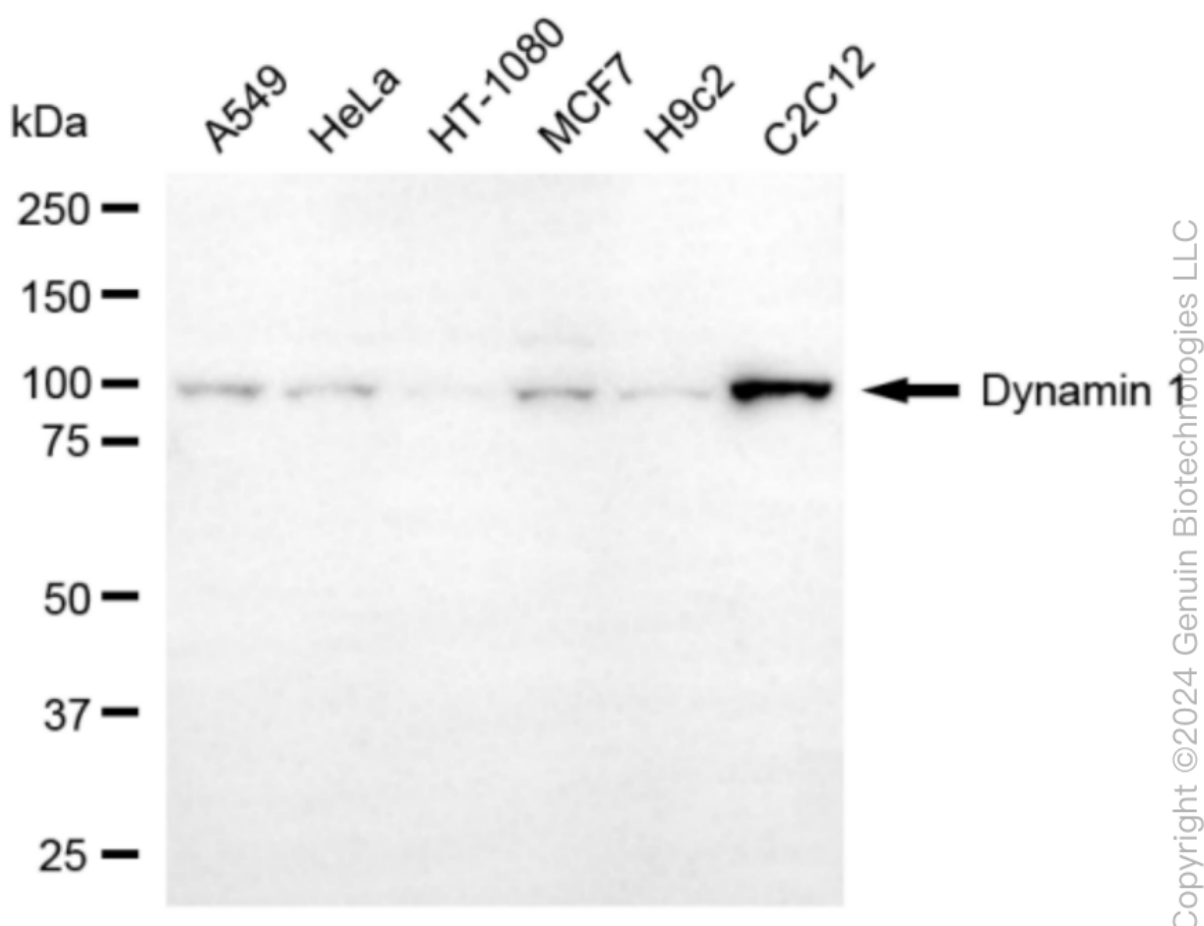
ORDERS

SALES@GENUINBIOTECH.COM
FAX: +1-540-855-7041

WWW.GENUINBIOTECH.COM



Immunocytochemical staining of C2C12 cells with anti-dynamin 1 antibody (Cat#61150, 1:1000). Nuclei were stained blue with DAPI; Dynamin 1 was stained magenta with Alexa Fluor® 647. Images were taken using Leica stellaris 5. Protein abundance based on laser Intensity and smart gain: Medium. Scale bar, 20 μ m.

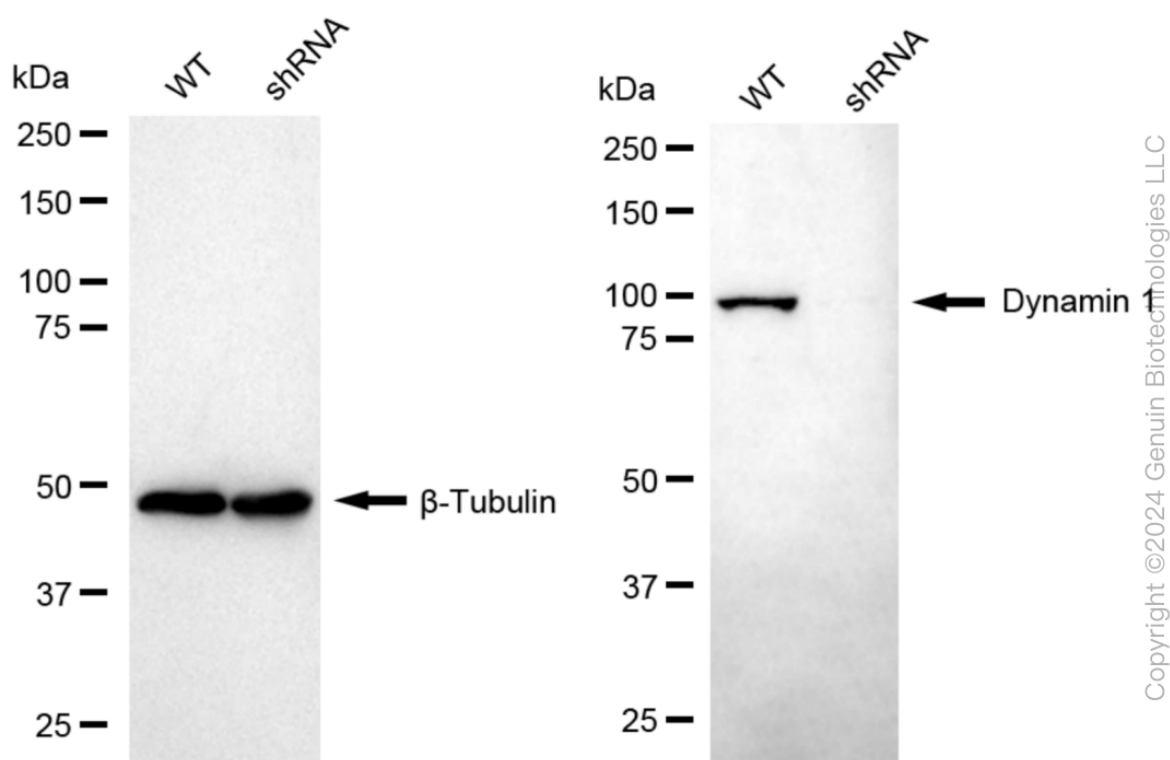


Western blotting analysis using anti-dynamin 1 antibody (Cat#61150). Total cell lysates (30 μ g) from various cell lines were loaded and separated by SDS-PAGE. The blot was incubated with anti-dynamin 1 antibody (Cat#61150, 1:5,000) and HRP-conjugated goat anti-rabbit secondary

KD-Validated Anti-Dynamin 1 Recombinant Rabbit Monoclonal Antibody

PAGE 3

antibody (Cat#201, 1:20,000) respectively. Image was developed using FeQ™ ECL Substrate Kit (Cat#226).



Western blotting analysis using anti-dynamin 1 antibody (Cat#61150). Dynamin 1 expression in wild type (WT) and dynamin 1 (DNM1) shRNA knockdown (KD) HeLa cells with 20 μ g of total cell lysates. β -Tubulin serves as a loading control. The blot was incubated with anti-dynamin 1 antibody (Cat#61150, 1:5,000) and HRP-conjugated goat anti-rabbit secondary antibody (Cat#201, 1:20,000) respectively. Image was developed using NaQ™ ECL Substrate Kit (Cat#716).

SUPPORT

SUPPORT@GENUINBIOTECH.COM
TEL: +1-540-855-7041

ORDERS

SALES@GENUINBIOTECH.COM
FAX: +1-540-855-7041

WWW.GENUINBIOTECH.COM