

# KD-Validated Anti-Frizzled class receptor 9 Recombinant Rabbit Monoclonal Antibody



**Catalog #: 61152**

## Aliases

FZD9; Frizzled Class Receptor 9; FZD3; CD349; Frizzled 9, Seven Transmembrane Spanning Receptor; Frizzled Family Receptor 9; Frizzled-9; Fz-9; FzE6; HFz9; Frizzled (Drosophila) Homolog 9; Frizzled Homolog 9 (Drosophila); Frizzled Homolog 9; CD349 Antigen

## Background

Gene Name: FZD9

NCBI Gene Entry: [8326](#)

UniProt Entry: [O00144](#)

## Application Information

Molecular Weight: Predicted, 64 kDa, observed, 50 kDa

Clonality: Rabbit monoclonal antibody

Clone ID: 24GB5995

Species Reactivity: Human

Applications Tested: Western blotting (WB), flow cytometry (FCM), immunocytochemistry (IC)

## Immunogen

A synthesized peptide derived from human Frizzled 9 / CD349

## Isotype

Rabbit IgG

## Storage Buffer

Supplied in PBS (pH 7.4) containing 50% glycerol, and 0.02% sodium azide.

## Storage

Store at -20 °C for one year.

## Recommended Dilutions

Western Blotting (WB): 1:1,000-1:5,000

Flow Cytometry (FCM): 1:2,000

Immunocytochemistry (IC): 1:100-1:1,000

**Note:** This product is for research use only.

---

### SUPPORT

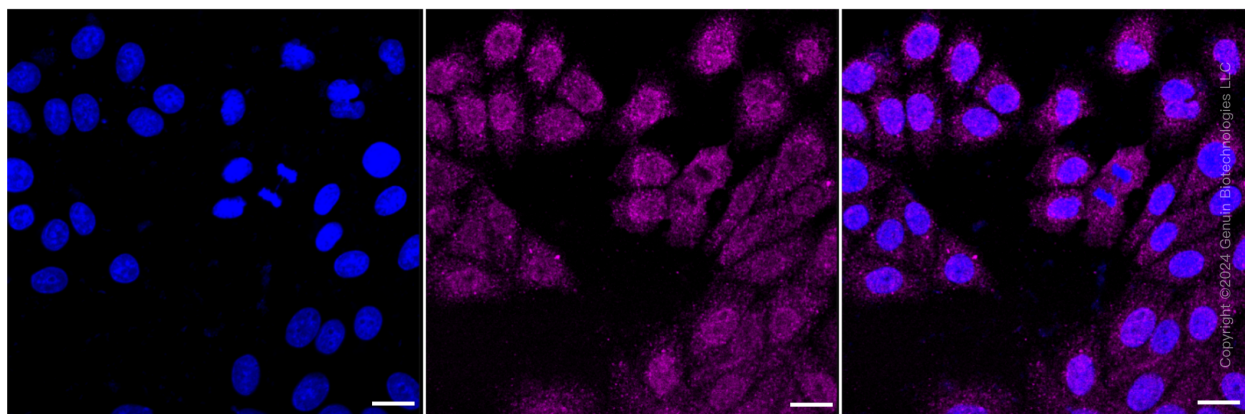
SUPPORT@GENUINBIOTECH.COM  
TEL: +1-540-855-7041

### ORDERS

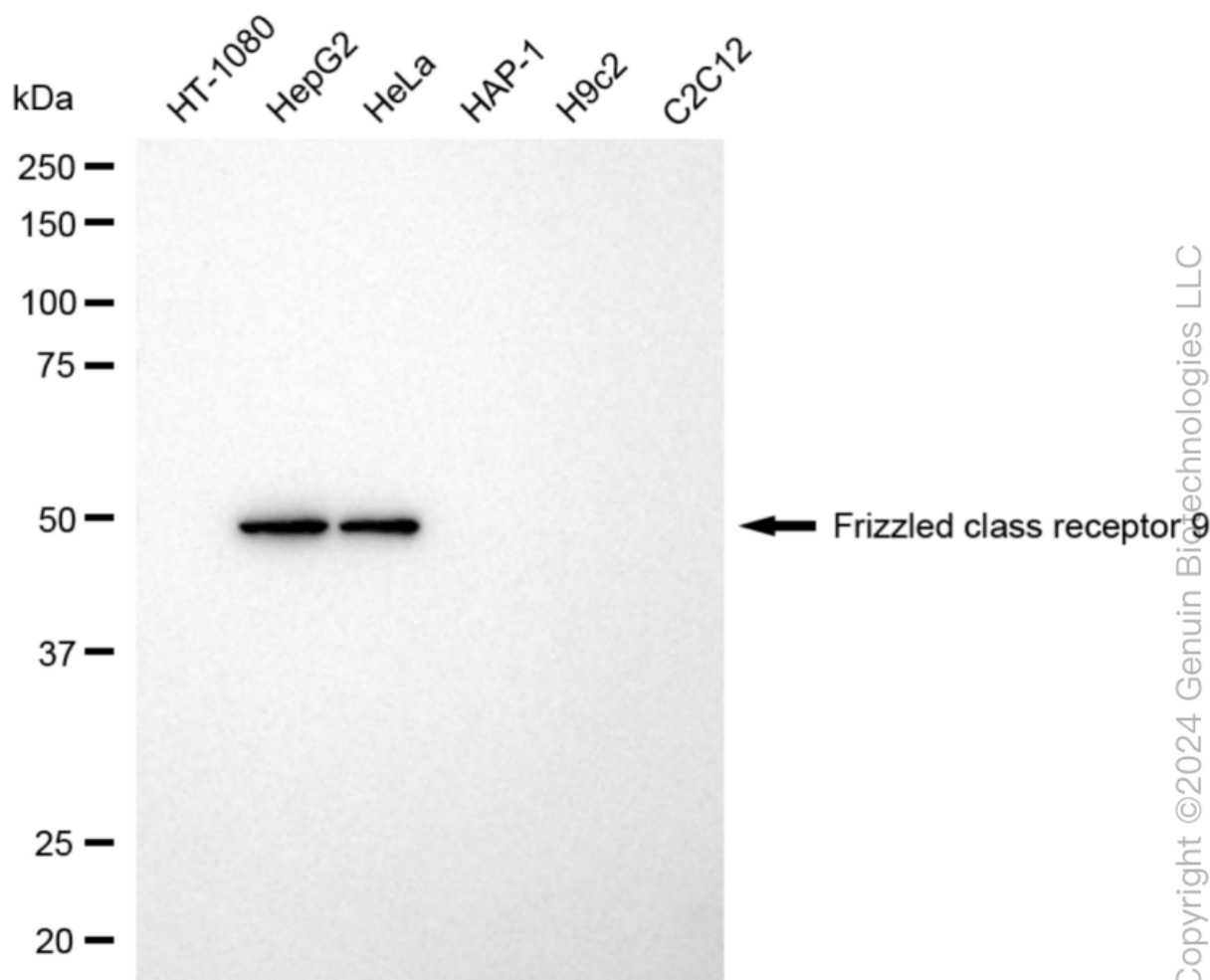
SALES@GENUINBIOTECH.COM  
FAX: +1-540-855-7041

[WWW.GENUINBIOTECH.COM](http://WWW.GENUINBIOTECH.COM)

## Validation Data



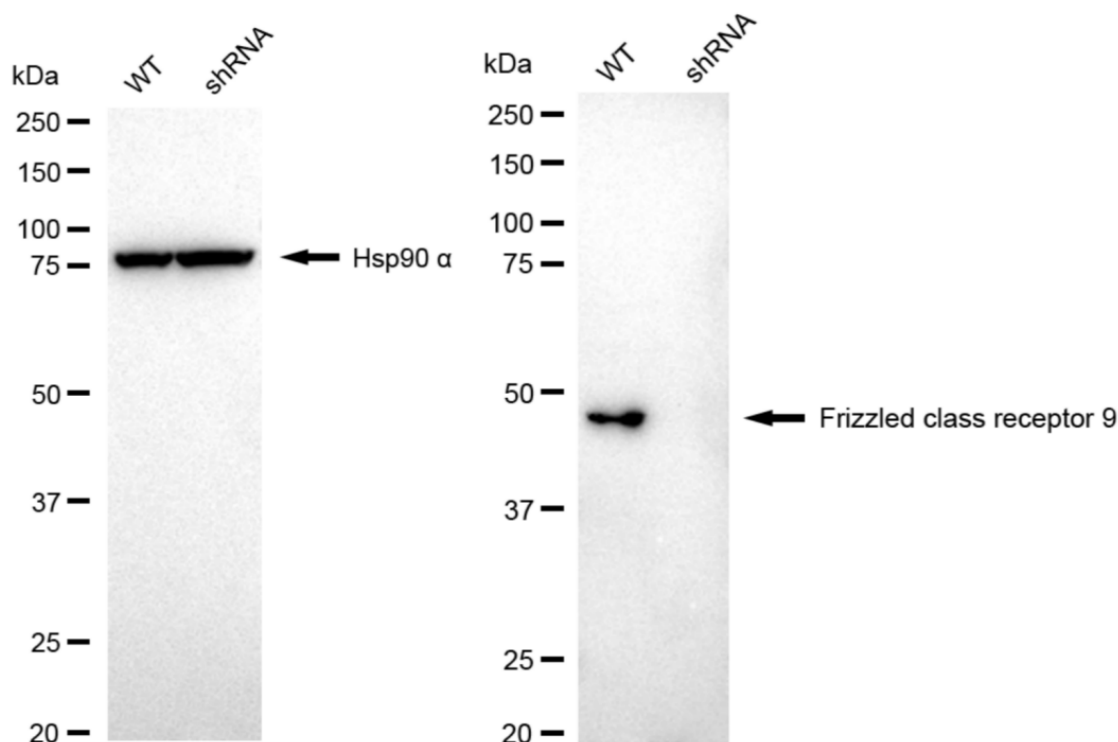
Immunocytochemical staining of HepG2 cells with anti-frizzled class receptor 9 antibody (Cat#61152, 1:1,000). Nuclei were stained blue with DAPI; Frizzled class receptor 9 was stained magenta with Alexa Fluor® 647. Images were taken using Leica stellaris 5. Protein abundance based on laser Intensity and smart gain: Medium. Scale bar, 20  $\mu$ m.



## KD-Validated Anti-Frizzled class receptor 9 Recombinant Rabbit Monoclonal Antibody

PAGE 3

Western blotting analysis using anti-frizzled class receptor 9 antibody (Cat#61152). Total cell lysates (30  $\mu$ g) from various cell lines were loaded and separated by SDS-PAGE. The blot was incubated with anti-frizzled class receptor 9 antibody (Cat#61152, 1:5,000) and HRP-conjugated goat anti-rabbit secondary antibody (Cat#201, 1:20,000) respectively. Image was developed using FeQ™ ECL Substrate Kit (Cat#226).



Western blotting analysis using anti-frizzled class receptor 9 antibody (Cat#61152). Frizzled class receptor 9 expression in wild type (WT) and frizzled class receptor 9 (FZD9) shRNA knockdown (KD) HeLa cells with 20  $\mu$ g of total cell lysates. Hsp90  $\alpha$  serves as a loading control. The blot was incubated with anti-frizzled class receptor 9 antibody (Cat#61152, 1:5,000) and HRP-conjugated goat anti-rabbit secondary antibody (Cat#201, 1:20,000) respectively. Image was developed using NaQ™ ECL Substrate Kit (Cat#716).

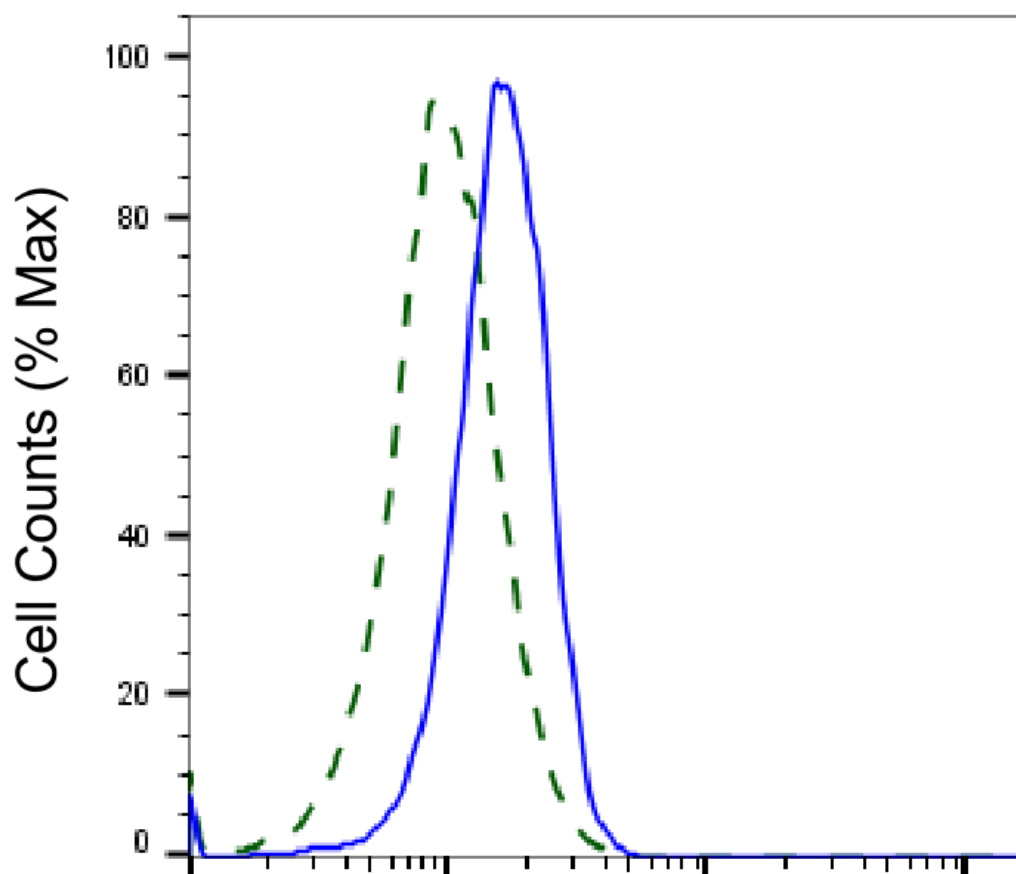
### SUPPORT

SUPPORT@GENUINBIOTECH.COM  
TEL: +1-540-855-7041

### ORDERS

SALES@GENUINBIOTECH.COM  
FAX: +1-540-855-7041

[WWW.GENUINBIOTECH.COM](http://WWW.GENUINBIOTECH.COM)



Copyright ©2025 Genuin Biotechnologies LLC

## Frizzled class receptor 9-Alexa Fluor® 647

Validation of Frizzled class receptor 9 knockdown using flow cytometry. Wild-type(WT, Blue) and knockdown(KD, Green) HeLa cells were stained with anti-Frizzled class receptor 9 antibody (Cat#61152, 1:2,000) and analyzed using BD flow cytometer.