

# KD-Validated Anti-Homeobox B4 Recombinant Rabbit Monoclonal Antibody



**Catalog #: 61156**

## Aliases

HOXB4; Homeobox B4; HOX2F; Homeobox Protein Hox-2.6; Homeobox Protein Hox-B4; Homeobox Protein Hox-2F; Homeo Box B4; HOX2; Homeo Box 2F; HOX-2.6

## Background

Gene Name: HOXB4

NCBI Gene Entry: [3214](#)

UniProt Entry: [P17483](#)

## Application Information

Molecular Weight: Predicted, 28 kDa, observed, 34 kDa

Clonality: Rabbit monoclonal antibody

Clone ID: 24GB6010

Species Reactivity: Human, rat

Applications Tested: Western blotting (WB), flow cytometry (FCM), immunocytochemistry (IC)

## Immunogen

A synthesized peptide derived from human HOXB4

## Isotype

Rabbit IgG

## Storage Buffer

Supplied in PBS (pH 7.4) containing 50% glycerol, and 0.02% sodium azide.

## Storage

Store at -20 °C for one year.

## Recommended Dilutions

Western Blotting (WB): 1:1,000-1:5,000

Flow Cytometry (FCM): 1:2,000

Immunocytochemistry (IC): 1:100-1:1,000

**Note:** This product is for research use only.

## Validation Data

---

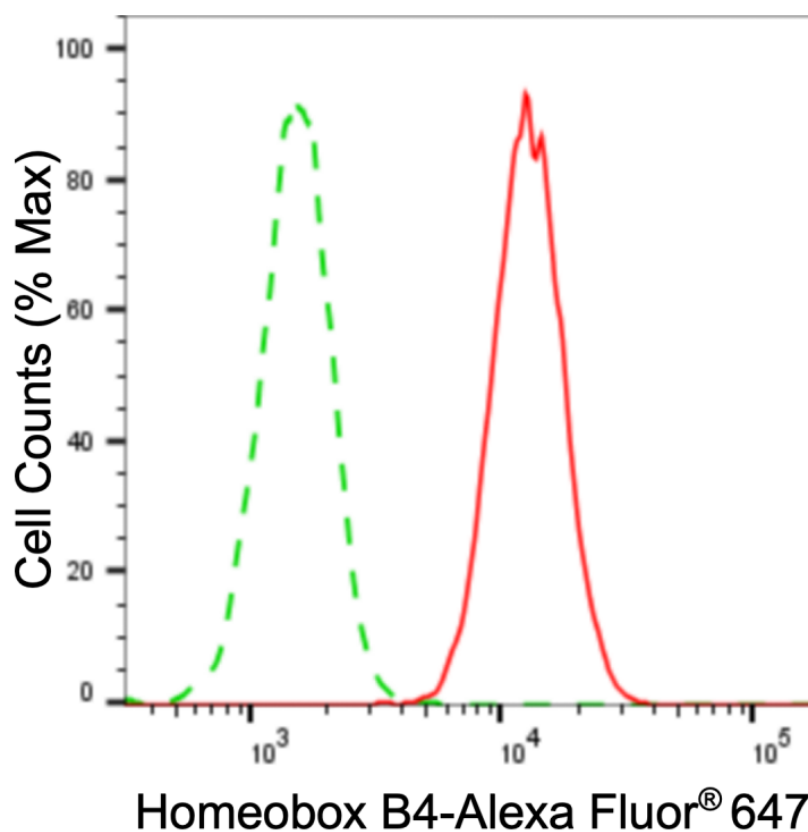
### SUPPORT

SUPPORT@GENUINBIOTECH.COM  
TEL: +1-540-855-7041

### ORDERS

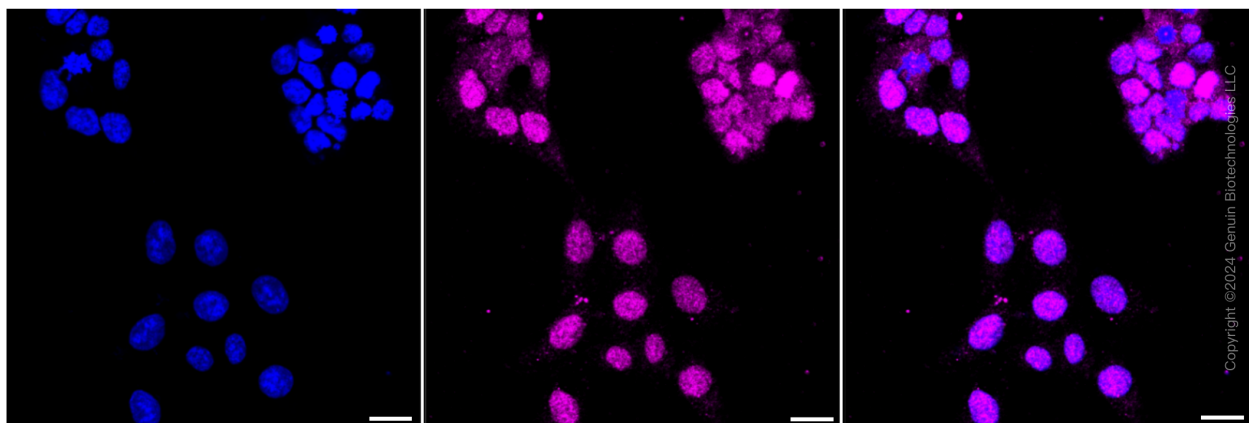
SALES@GENUINBIOTECH.COM  
FAX: +1-540-855-7041

[WWW.GENUINBIOTECH.COM](http://WWW.GENUINBIOTECH.COM)



Copyright ©2024 Genuin Biotechnologies LLC

Flow cytometric analysis of homeobox B4 expression in HAP-1 cells using anti-homeobox B4 antibody (Cat#61156, 1:2,000). Green, isotype control; red, homeobox B4.

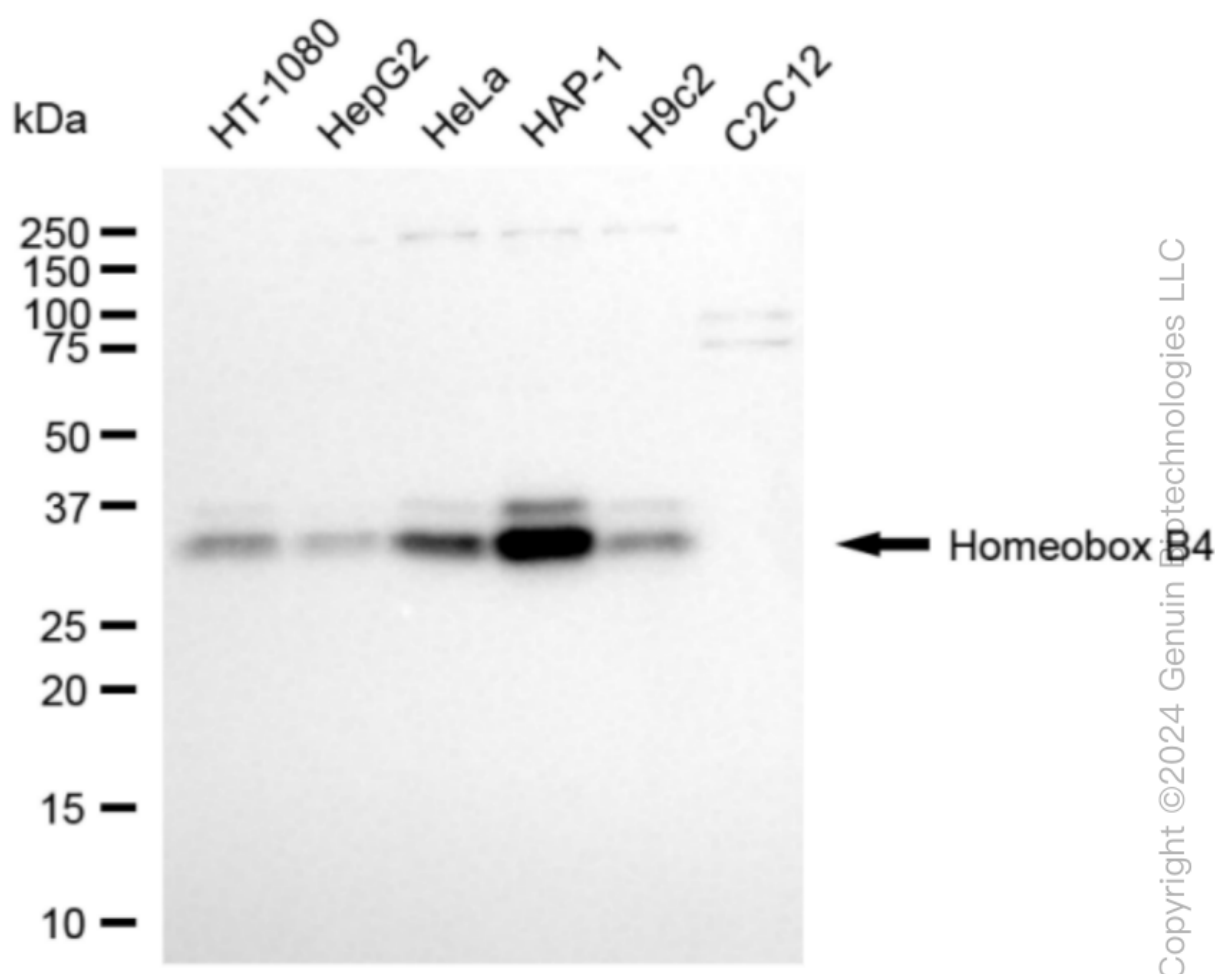


Copyright ©2024 Genuin Biotechnologies LLC

Immunocytochemical staining of HAP-1 cells with anti-Homeobox B4 antibody (Cat#61156, 1:1,000). Nuclei were stained blue with DAPI; Homeobox B4 was stained magenta with Alexa Fluor® 647. Images were taken using Leica stellaris 5. Protein abundance based on laser Intensity and smart gain: Medium. Scale bar, 20  $\mu$ m.

## KD-Validated Anti-Homeobox B4 Recombinant Rabbit Monoclonal Antibody

PAGE 3



Western blotting analysis using anti-homeobox B4 antibody (Cat#61156). Total cell lysates (30 µg) from various cell lines were loaded and separated by SDS-PAGE. The blot was incubated with anti-homeobox B4 antibody (Cat#61156, 1:5,000) and HRP-conjugated goat anti-rabbit secondary antibody (Cat#201, 1:20,000) respectively. Image was developed using NaQ™ ECL Substrate Kit (Cat#716).

### SUPPORT

SUPPORT@GENUINBIOTECH.COM  
TEL: +1-540-855-7041

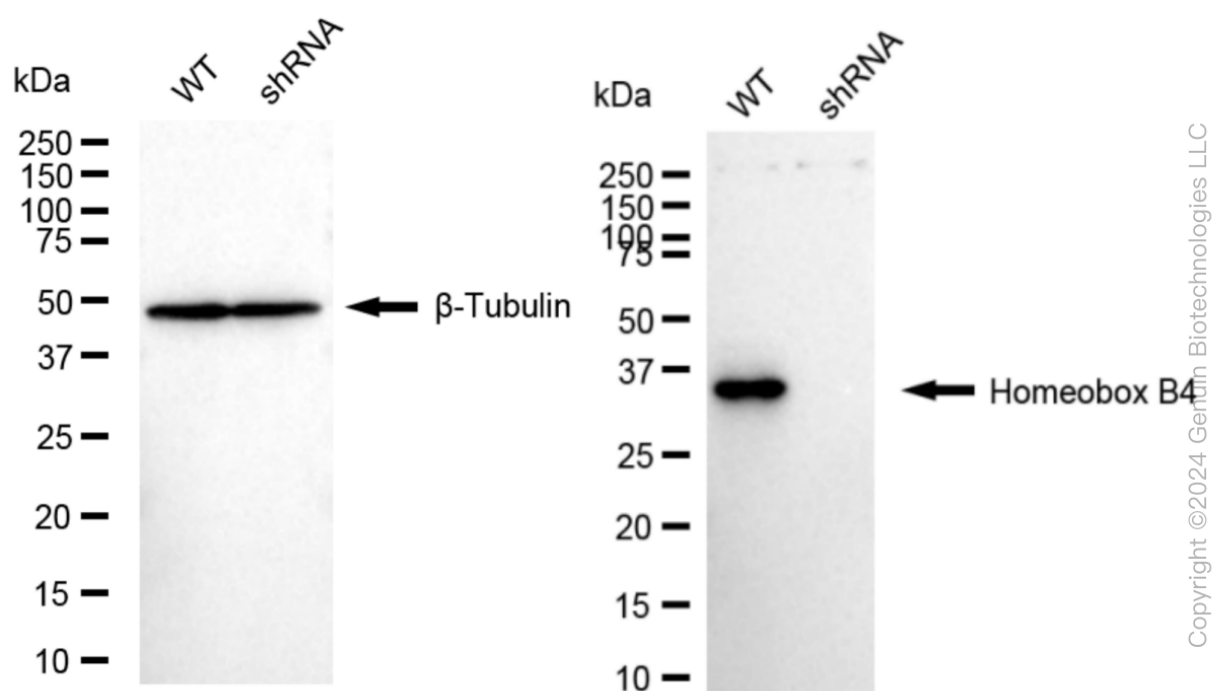
### ORDERS

SALES@GENUINBIOTECH.COM  
FAX: +1-540-855-7041

WWW.GENUINBIOTECH.COM

## KD-Validated Anti-Homeobox B4 Recombinant Rabbit Monoclonal Antibody

PAGE 4



Western blotting analysis using anti-homeobox B4 antibody (Cat#61156). Homeobox B4 expression in wild type (WT) and homeobox B4 (HOXB4) shRNA knockdown (KD) HeLa cells with 20  $\mu$ g of total cell lysates.  $\beta$ -Tubulin serves as a loading control. The blot was incubated with anti-homeobox B4 antibody (Cat#61156, 1:5,000) and HRP-conjugated goat anti-rabbit secondary antibody (Cat#201, 1:20,000) respectively. Image was developed using NaQ™ ECL Substrate Kit (Cat#716).

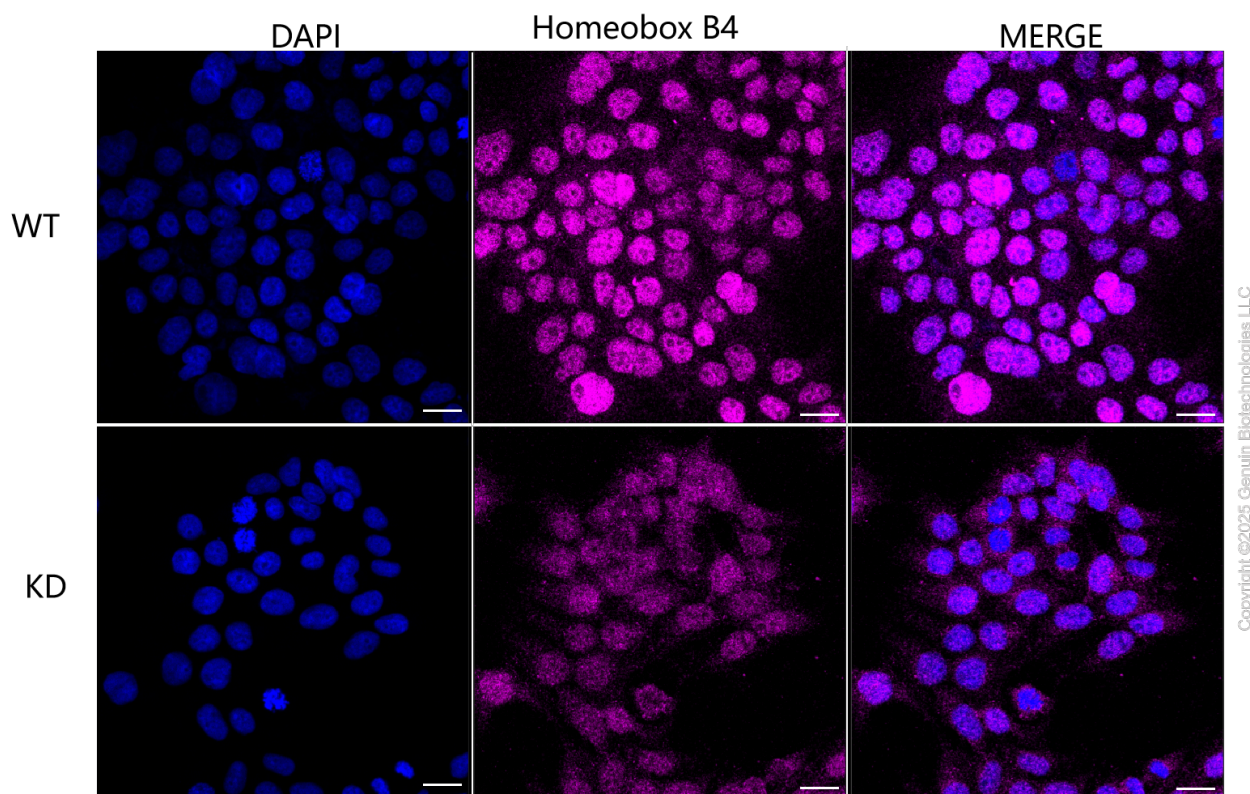
### SUPPORT

SUPPORT@GENUINBIOTECH.COM  
TEL: +1-540-855-7041

### ORDERS

SALES@GENUINBIOTECH.COM  
FAX: +1-540-855-7041

[WWW.GENUINBIOTECH.COM](http://WWW.GENUINBIOTECH.COM)



Immunocytochemical staining of HeLa cells using anti-Homeobox B4 antibody (Cat#61156, 1:1,000), Top panel: wild-type (WT); Bottom panel: Homeobox B4 shRNA knockdown (KD). Nuclei were stained blue with DAPI; Homeobox B4 was stained magenta with Alexa Fluor® 647. Scale bar, 20  $\mu$ m.