

# KD-Validated Anti-Interferon regulatory factor 6 Recombinant Rabbit Monoclonal Antibody



**Catalog #: 61158**

## Aliases

IRF6; Interferon Regulatory Factor 6; OFC6; VWS1; LPS; VWS; Van Der Woude Syndrome; IRF-6; PPS1; PIT; PPS

## Background

Gene Name: IRF6

NCBI Gene Entry: [3664](#)

UniProt Entry: [O14896](#)

## Application Information

Molecular Weight: Predicted, 53 kDa, observed, 60 kDa

Clonality: Rabbit monoclonal antibody

Clone ID: 24GB6015

Species Reactivity: Human, mouse, rat

Applications Tested: Western blotting (WB), flow cytometry (FCM), immunocytochemistry (IC)

## Immunogen

A synthesized peptide derived from human IRF6

## Isotype

Rabbit IgG

## Storage Buffer

Supplied in PBS (pH 7.4) containing 50% glycerol, and 0.02% sodium azide.

## Storage

Store at -20 °C for one year.

## Recommended Dilutions

Western Blotting (WB): 1:1,000-1:5,000

Flow Cytometry (FCM): 1:2,000

Immunocytochemistry (IC): 1:100-1:1,000

**Note:** This product is for research use only.

## Validation Data

---

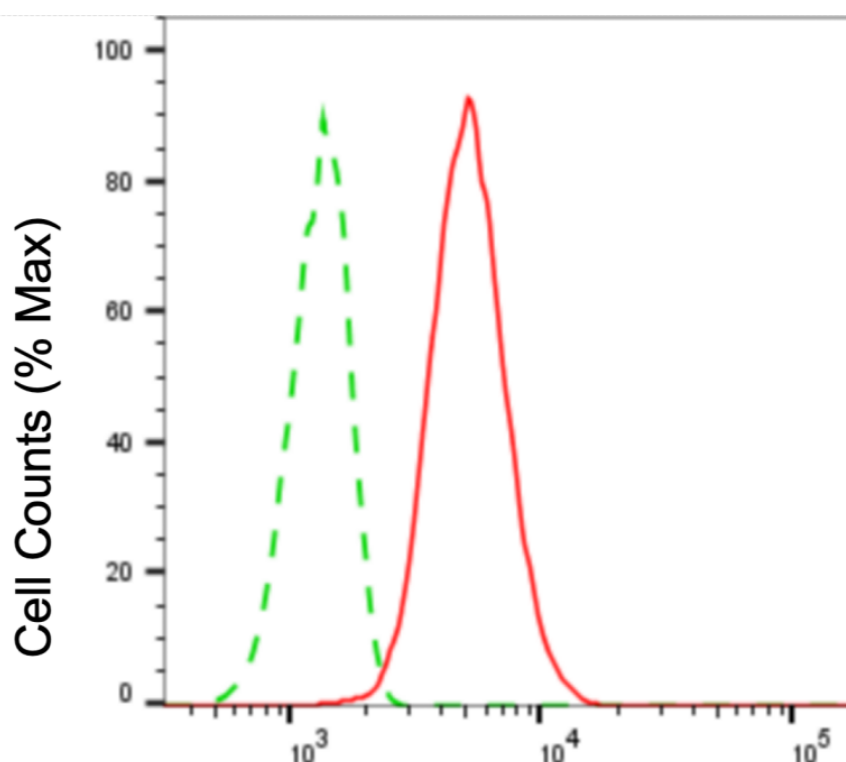
### SUPPORT

SUPPORT@GENUINBIOTECH.COM  
TEL: +1-540-855-7041

### ORDERS

SALES@GENUINBIOTECH.COM  
FAX: +1-540-855-7041

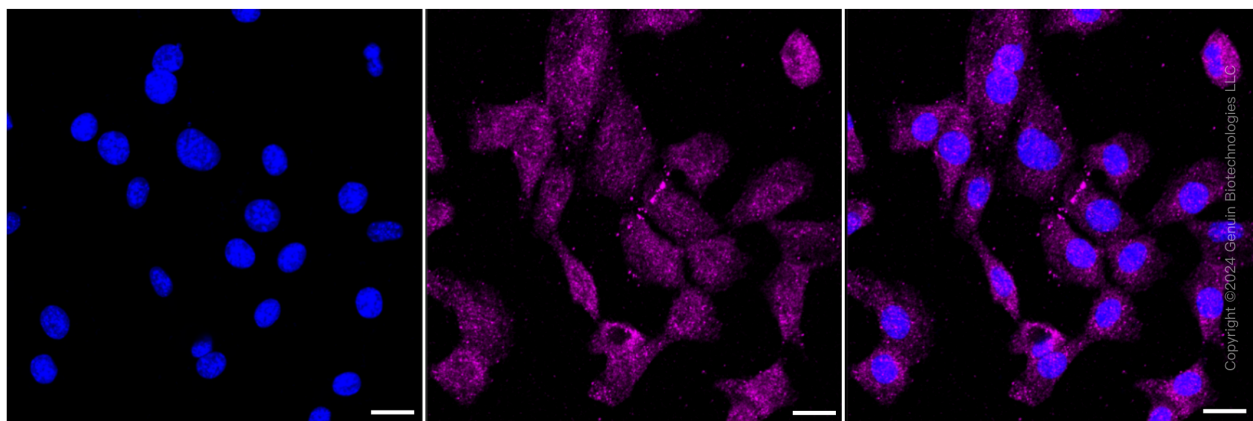
[WWW.GENUINBIOTECH.COM](http://WWW.GENUINBIOTECH.COM)



Copyright ©2024 Genuin Biotechnologies LLC

### Interferon regulatory factor 6-Alexa Fluor® 647

Flow cytometric analysis of interferon regulatory factor 6 expression in C2C12 cells using Interferon regulatory factor 6 antibody (Cat#61158, 1:2,000). Green, isotype control; red, interferon regulatory factor 6.



Copyright ©2024 Genuin Biotechnologies LLC

Immunocytochemical staining of HepG2 cells with anti-interferon regulatory factor 6 antibody (Cat#61158, 1:1,000). Nuclei were stained blue with DAPI; Interferon regulatory factor 6 was stained magenta with Alexa Fluor® 647. Images were taken using Leica stellaris 5. Protein abundance based on laser Intensity and smart gain: Medium. Scale bar: 20 µm.

#### SUPPORT

SUPPORT@GENUINBIOTECH.COM  
TEL: +1-540-855-7041

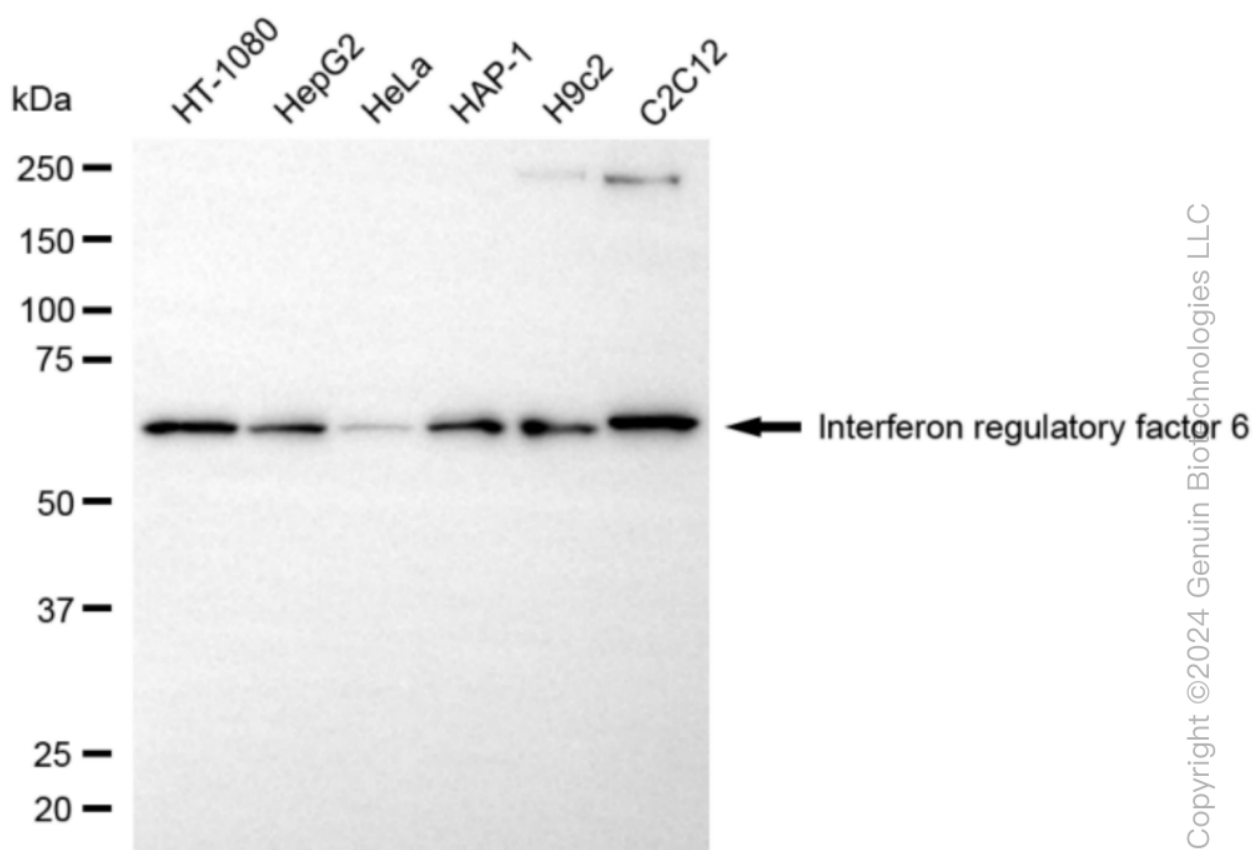
#### ORDERS

SALES@GENUINBIOTECH.COM  
FAX: +1-540-855-7041

[WWW.GENUINBIOTECH.COM](http://WWW.GENUINBIOTECH.COM)

## KD-Validated Anti-Interferon regulatory factor 6 Recombinant Rabbit Monoclonal Antibody

PAGE 3



Western blotting analysis using anti-interferon regulatory factor 6 antibody (Cat#61158). Total cell lysates (30  $\mu$ g) from various cell lines were loaded and separated by SDS-PAGE. The blot was incubated with anti-interferon regulatory factor 6 antibody (Cat#61158, 1:5,000) and HRP-conjugated goat anti-rabbit secondary antibody (Cat#201, 1:20,000) respectively. Image was developed using NaQ<sup>TM</sup> ECL Substrate Kit (Cat#716).

### SUPPORT

SUPPORT@GENUINBIOTECH.COM  
TEL: +1-540-855-7041

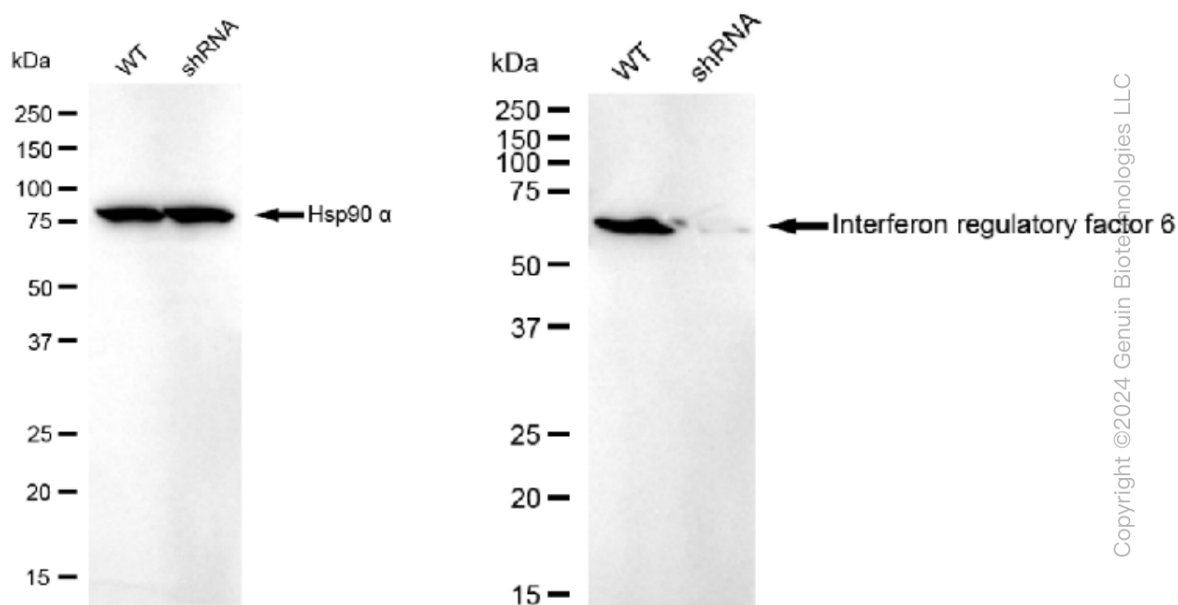
### ORDERS

SALES@GENUINBIOTECH.COM  
FAX: +1-540-855-7041

[WWW.GENUINBIOTECH.COM](http://WWW.GENUINBIOTECH.COM)

## KD-Validated Anti-Interferon regulatory factor 6 Recombinant Rabbit Monoclonal Antibody

PAGE 4



Western blotting analysis using anti-interferon regulatory factor 6 antibody (Cat#61158). Interferon regulatory factor 6 expression in wild type (WT) and interferon regulatory factor 6 (IRF6) shRNA knockdown (KD) HeLa cells with 20 µg of total cell lysates. Hsp90 α serves as a loading control. The blot was incubated with anti-interferon regulatory factor 6 antibody (Cat#61158, 1:5,000) and HRP-conjugated goat anti-rabbit secondary antibody (Cat#201, 1:20,000) respectively. Image was developed using NaQ™ ECL Substrate Kit (Cat#716).

### SUPPORT

SUPPORT@GENUINBIOTECH.COM  
TEL: +1-540-855-7041

### ORDERS

SALES@GENUINBIOTECH.COM  
FAX: +1-540-855-7041

[WWW.GENUINBIOTECH.COM](http://WWW.GENUINBIOTECH.COM)