

# KD-Validated Anti-ITPK1 Recombinant Rabbit Monoclonal Antibody



**Catalog #: 61160**

## Aliases

ITPK1; Inositol-Tetrakisphosphate 1-Kinase; Inositol 1,3,4-Trisphosphate 5/6-Kinase; Ins(1,3,4)P(3) 5/6-Kinase; Inositol 1,3,4-Triphosphate 5/6 Kinase; Inositol-Triphosphate 5/6-Kinase; EC 2.7.1.134; EC 2.7.1.159; ITRPK1

## Background

Gene Name: ITPK1

NCBI Gene Entry: [3705](#)

UniProt Entry: [Q13572](#)

## Application Information

Molecular Weight: Predicted, 46 kDa, observed, 42 kDa

Clonality: Rabbit monoclonal antibody

Clone ID: 24GB6020

Species Reactivity: Human

Applications Tested: Western blotting (WB), flow cytometry (FCM), immunocytochemistry (IC)

## Immunogen

A synthesized peptide derived from human ITPK1

## Isotype

Rabbit IgG

## Storage Buffer

Supplied in PBS (pH 7.4) containing 50% glycerol, and 0.02% sodium azide.

## Storage

Store at -20 °C for one year.

## Recommended Dilutions

Western Blotting (WB): 1:1,000-1:5,000

Flow Cytometry (FCM): 1:2,000

Immunocytochemistry (IC): 1:100-1:1,000

**Note:** This product is for research use only.

---

### SUPPORT

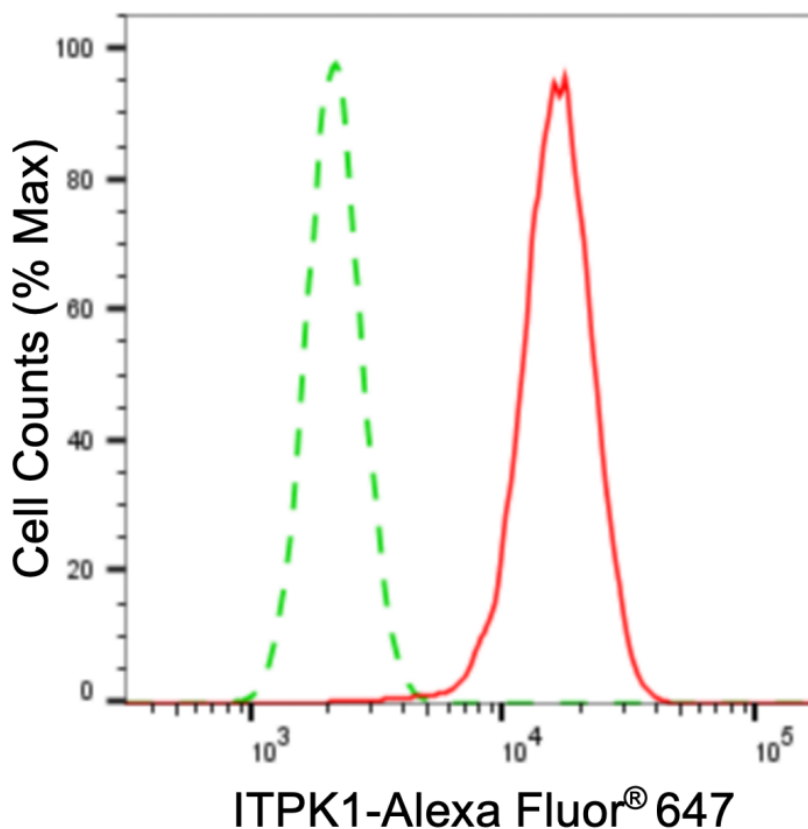
SUPPORT@GENUINBIOTECH.COM  
TEL: +1-540-855-7041

### ORDERS

SALES@GENUINBIOTECH.COM  
FAX: +1-540-855-7041

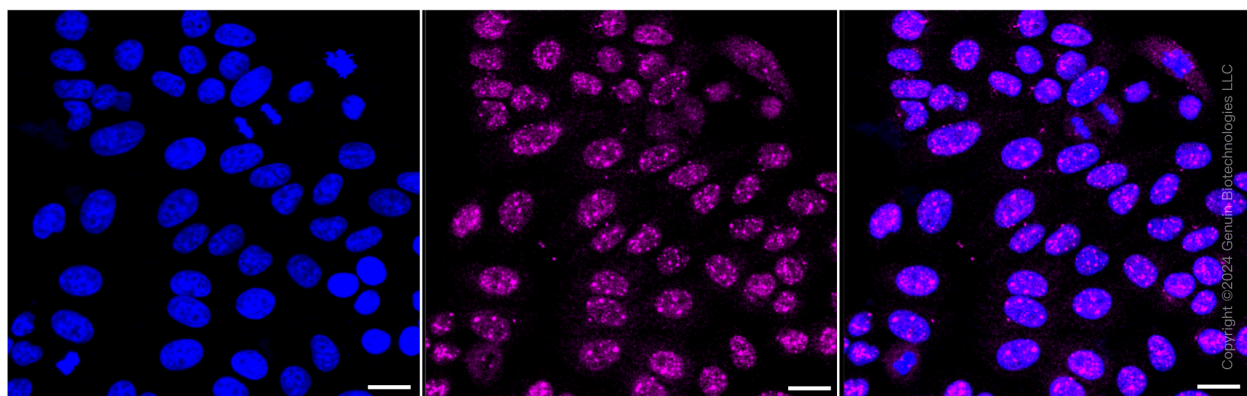
[WWW.GENUINBIOTECH.COM](http://WWW.GENUINBIOTECH.COM)

## Validation Data

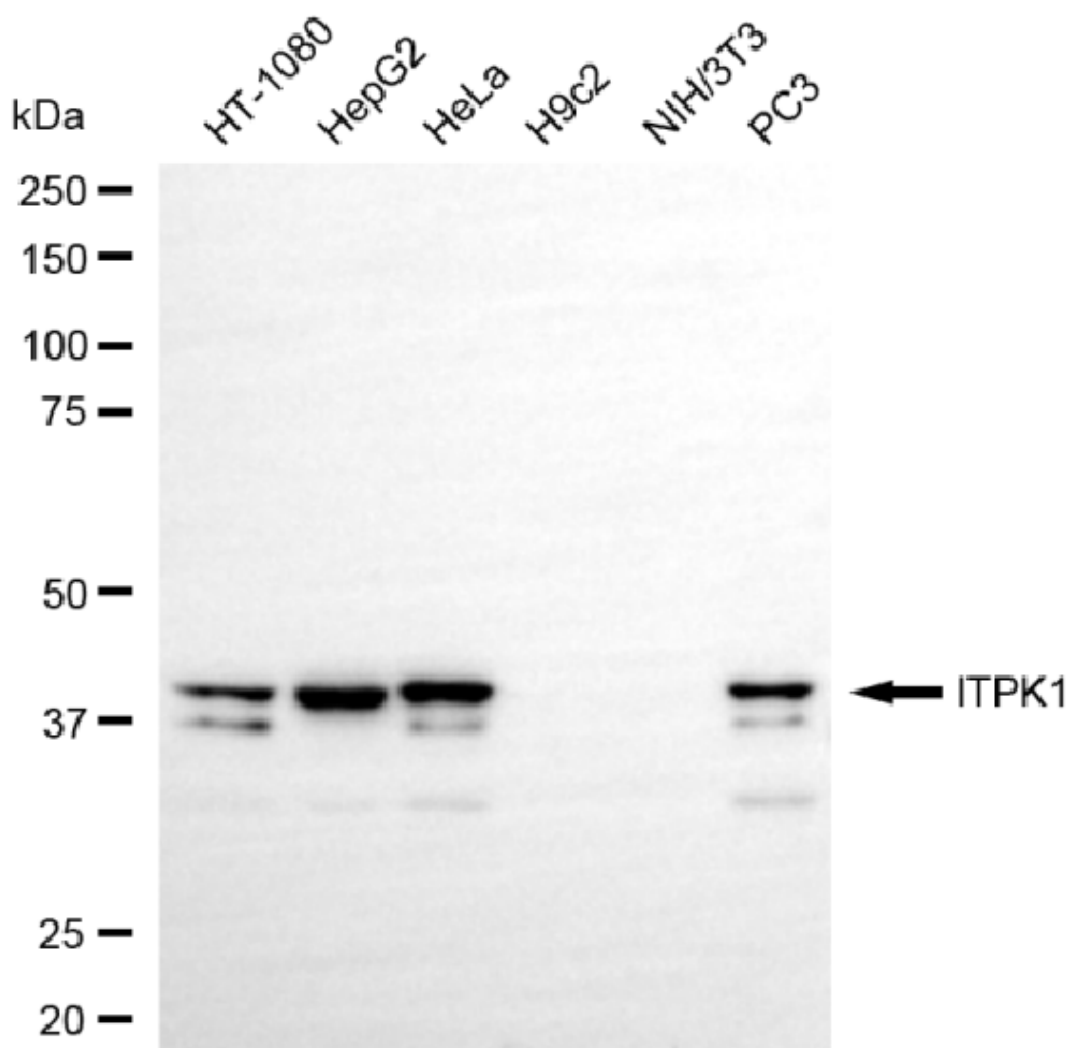


Copyright ©2024 Genuin Biotechnologies LLC

Flow cytometric analysis of ITPK1 expression in HepG2 cells using ITPK1 antibody (Cat#61160, 1:2,000). Green, isotype control; red, ITPK1.

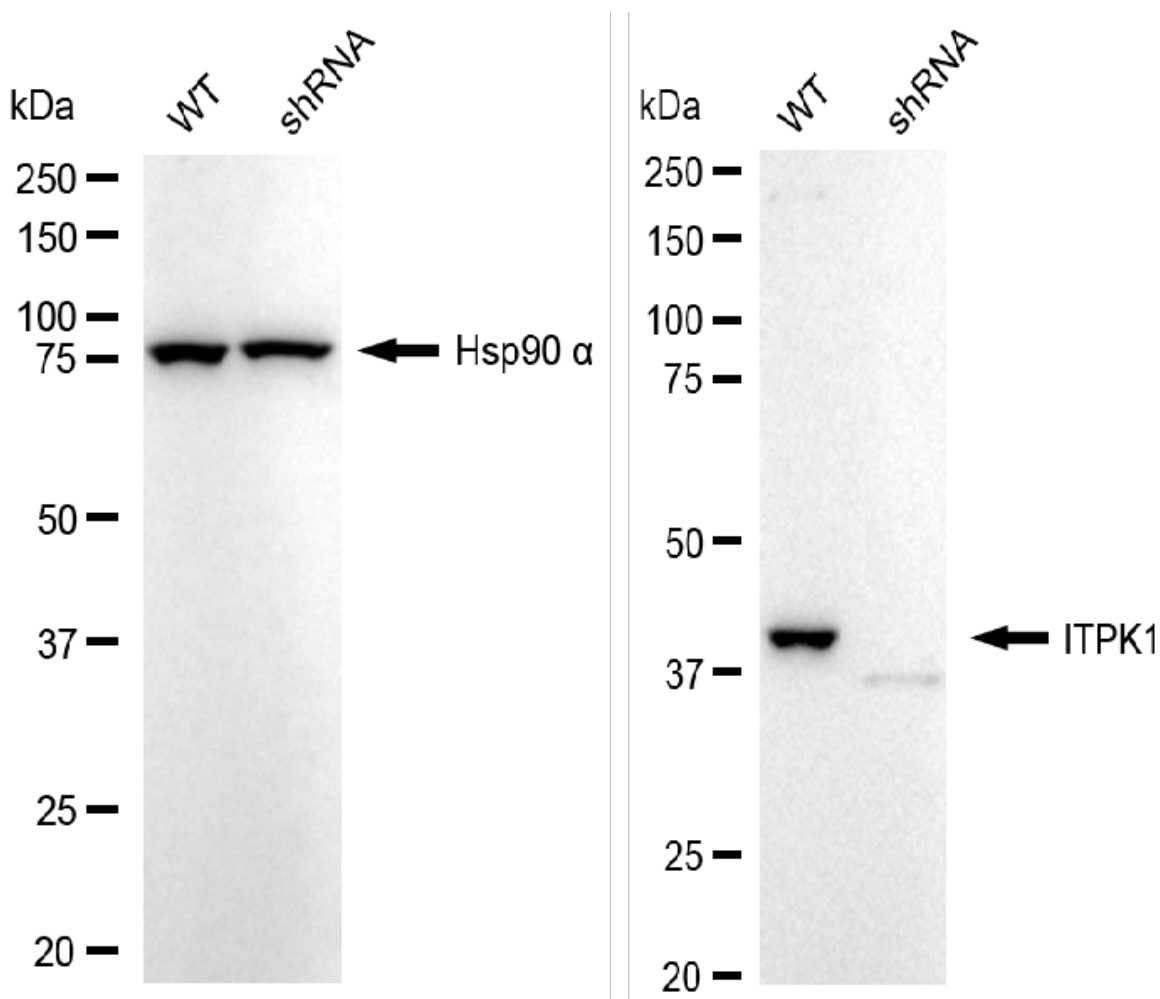


Copyright ©2024 Genuin Biotechnologies LLC



Copyright ©2025 Genuin Biotechnologies LLC

Western blotting analysis using anti-ITPK1 antibody (Cat#61160). Total cell lysates (30 µg) from various cell lines were loaded and separated by SDS-PAGE. The blot was incubated with anti-ITPK1 antibody (Cat#61160, 1:5,000) and HRP-conjugated goat anti-rabbit secondary antibody (Cat#201, 1:20,000) respectively. Image was developed using NaQ™ ECL Substrate Kit (Cat#716).



Copyright ©2025 Genuin Biotechnologies LLC

Western blotting analysis using anti-ITPK1 antibody (Cat#61160). ITPK1 expression in wild type (WT) and ITPK1 shRNA knockdown (KD) HeLa cells with 20 µg of total cell lysates. Hsp90 α serves as a loading control. The blot was incubated with anti-ITPK1 antibody (Cat#61160, 1:5,000) and HRP-conjugated goat anti-rabbit secondary antibody (Cat#201, 1:20,000) respectively. Image was developed using NaQ™ ECL Substrate Kit (Cat#716).