

KD-Validated Anti-Kinesin family member 4A Recombinant Rabbit Monoclonal Antibody



Catalog #: 61161

Aliases

KIF4A; Kinesin Family Member 4A; KIF4; MRX100; Chromosome-Associated Kinesin KIF4A; Chromokinesin KIF4A; Chromokinesin-A; HSA271784; FLJ12530; FLJ12655; FLJ14204; FLJ20631; KIF4-G1; XLID100; KIF4G1; TMDI

Background

Gene Name: KIF4A

NCBI Gene Entry: [24137](#)

UniProt Entry: [O95239](#)

Application Information

Molecular Weight: Predicted, 140 kDa, observed, 150 kDa

Clonality: Rabbit monoclonal antibody

Clone ID: 24GB6025

Species Reactivity: Human, mouse, rat

Applications Tested: Western blotting (WB), flow cytometry (FCM), immunocytochemistry (IC)

Immunogen

A synthesized peptide derived from human KIF4A

Isotype

Rabbit IgG

Storage Buffer

Supplied in PBS (pH 7.4) containing 50% glycerol, and 0.02% sodium azide.

Storage

Store at -20 °C for one year.

Recommended Dilutions

Western Blotting (WB): 1:1,000-1:5,000

Flow Cytometry (FCM): 1:2,000

Immunocytochemistry (IC): 1:100-1:1,000

Note: This product is for research use only.

SUPPORT

SUPPORT@GENUINBIOTECH.COM
TEL: +1-540-855-7041

ORDERS

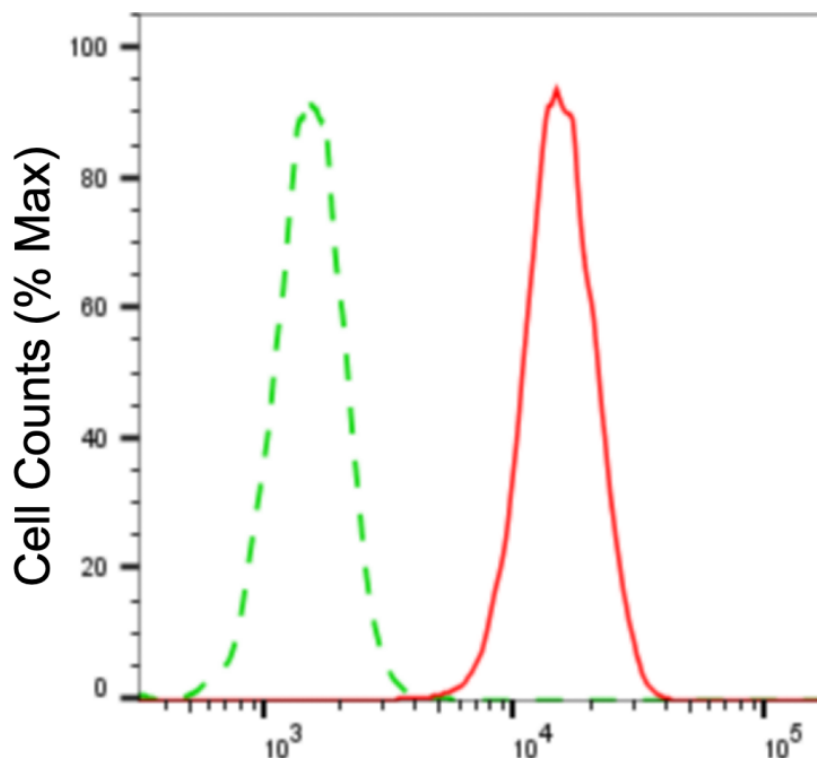
SALES@GENUINBIOTECH.COM
FAX: +1-540-855-7041

WWW.GENUINBIOTECH.COM

KD-Validated Anti-Kinesin family member 4A Recombinant Rabbit Monoclonal Antibody

PAGE 2

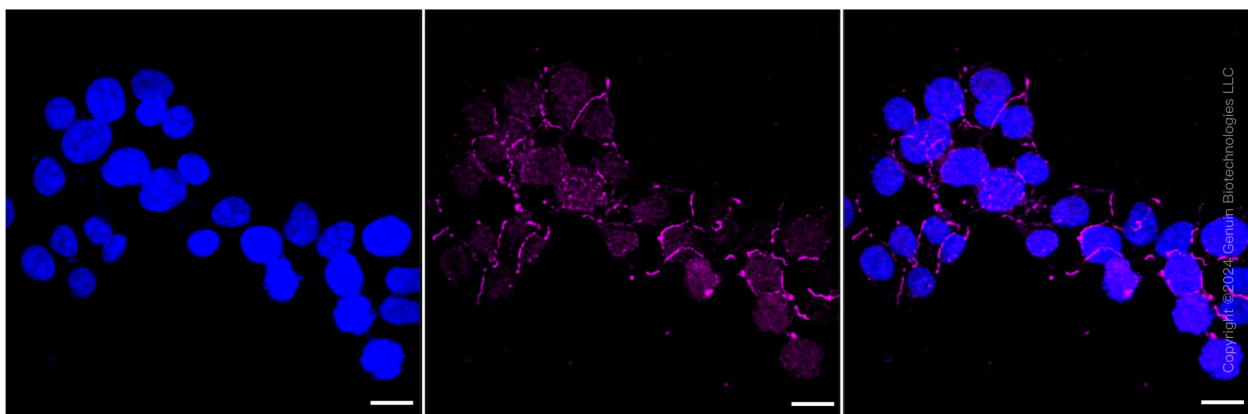
Validation Data



Copyright ©2024 Genuin Biotechnologies LLC

Kinesin family member 4A-Alexa Fluor® 647

Flow cytometric analysis of kinesin family member 4A expression in HAP-1 cells using anti-kinesin family member 4A antibody (Cat#61161, 1:2,000). Green, isotype control; red, kinesin family member 4A.



Copyright ©2024 Genuin Biotechnologies LLC

Immunocytochemical staining of HAP1 cells with anti-kinesin family member 4A antibody (Cat#61161, 1:1,000). Nuclei were stained blue with DAPI; Kinesin family member 4A was stained magenta with Alexa Fluor® 647. Images were taken using Leica stellaris 5. Protein abundance based on laser Intensity and smart gain: Medium. Scale bar: 20 μ m.

SUPPORT

SUPPORT@GENUINBIOTECH.COM
TEL: +1-540-855-7041

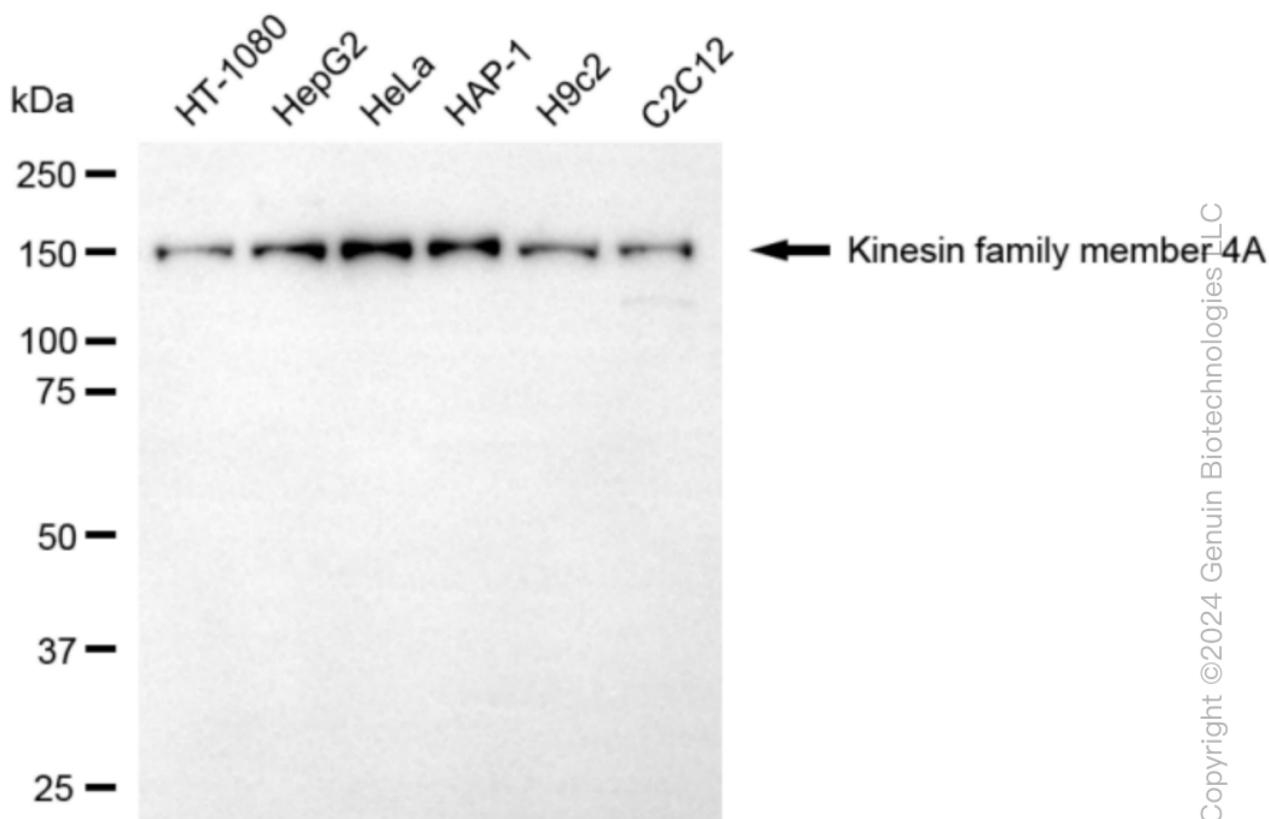
ORDERS

SALES@GENUINBIOTECH.COM
FAX: +1-540-855-7041

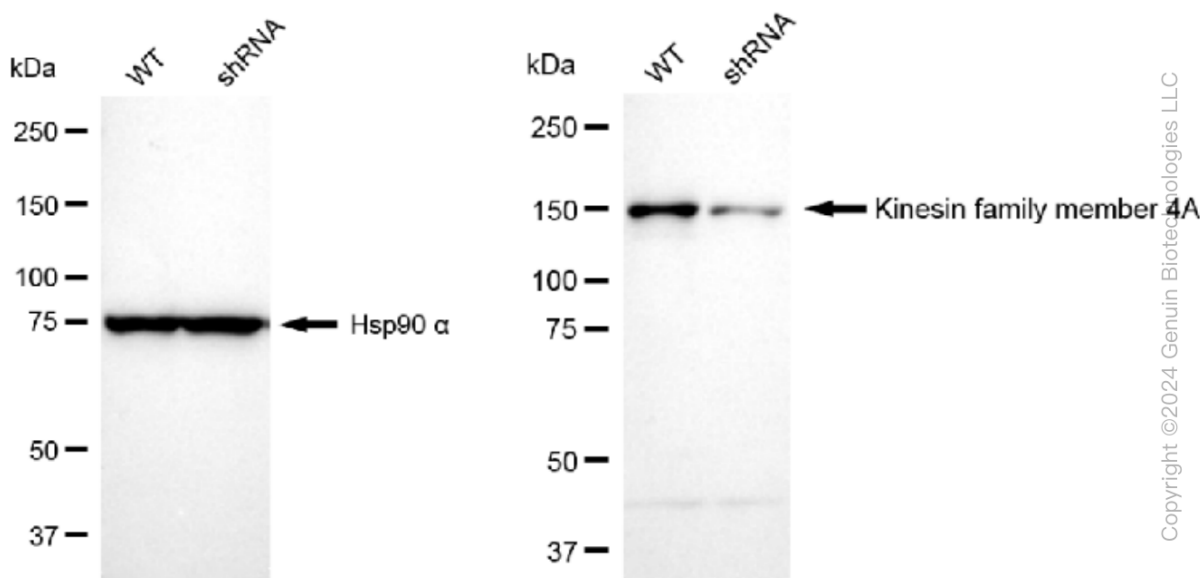
WWW.GENUINBIOTECH.COM

KD-Validated Anti-Kinesin family member 4A Recombinant Rabbit Monoclonal Antibody

PAGE 3



Western blotting analysis using anti-kinesin family member 4A antibody (Cat#61161). Total cell lysates (30 μ g) from various cell lines were loaded and separated by SDS-PAGE. The blot was incubated with anti-kinesin family member 4A antibody (Cat#61161, 1:5,000) and HRP-conjugated goat anti-rabbit secondary antibody (Cat#201, 1:20,000) respectively. Image was developed using FeQ™ ECL Substrate Kit (Cat#226).



SUPPORT

SUPPORT@GENUINBIOTECH.COM
TEL: +1-540-855-7041

ORDERS

SALES@GENUINBIOTECH.COM
FAX: +1-540-855-7041

WWW.GENUINBIOTECH.COM

KD-Validated Anti-Kinesin family member 4A Recombinant Rabbit Monoclonal Antibody

PAGE 4

Western blotting analysis using anti-kinesin family member 4A antibody (Cat#61161). Kinesin family member 4A expression in wild type (WT) and kinesin family member 4A (KIF4A) shRNA knockdown (KD) HeLa cells with 20 µg of total cell lysates. Hsp90 α serves as a loading control. The blot was incubated with anti-kinesin family member 4A antibody (Cat#61161, 1:5,000) and HRP-conjugated goat anti-rabbit secondary antibody (Cat#201, 1:20,000) respectively. Image was developed using NaQ™ ECL Substrate Kit (Cat#716).

SUPPORT

SUPPORT@GENUINBIOTECH.COM
TEL: +1-540-855-7041

ORDERS

SALES@GENUINBIOTECH.COM
FAX: +1-540-855-7041

WWW.GENUINBIOTECH.COM