

KD-Validated Anti-Kinesin light chain 1 Recombinant Rabbit Monoclonal Antibody



Catalog #: 61162

Aliases

KLC1; Kinesin Light Chain 1; KLC; KNS2A; KNS2; Kinesin 2 60/70kDa; HKLC1S; HKLC1N; HKLC1P; HKLC1G; HKLC1R; HKLC1J; HKLC1B; Medulloblastoma Antigen MU-MB-2.50; Kinesin 2; KLC

Background

Gene Name: KLC1

NCBI Gene Entry: [3831](#)

UniProt Entry: [Q07866](#)

Application Information

Molecular Weight: Predicted, 65 kDa, observed, 65 kDa

Clonality: Rabbit monoclonal antibody

Clone ID: 24GB6030

Species Reactivity: Human, mouse, rat

Applications Tested: Western blotting (WB), flow cytometry (FCM), immunocytochemistry (IC)

Immunogen

A synthesized peptide derived from human KLC1

Isotype

Rabbit IgG

Storage Buffer

Supplied in PBS (pH 7.4) containing 50% glycerol, and 0.02% sodium azide.

Storage

Store at -20 °C for one year.

Recommended Dilutions

Western Blotting (WB): 1:1,000-1:5,000

Flow Cytometry (FCM): 1:2,000

Immunocytochemistry (IC): 1:100-1:1,000

Note: This product is for research use only.

SUPPORT

SUPPORT@GENUINBIOTECH.COM
TEL: +1-540-855-7041

ORDERS

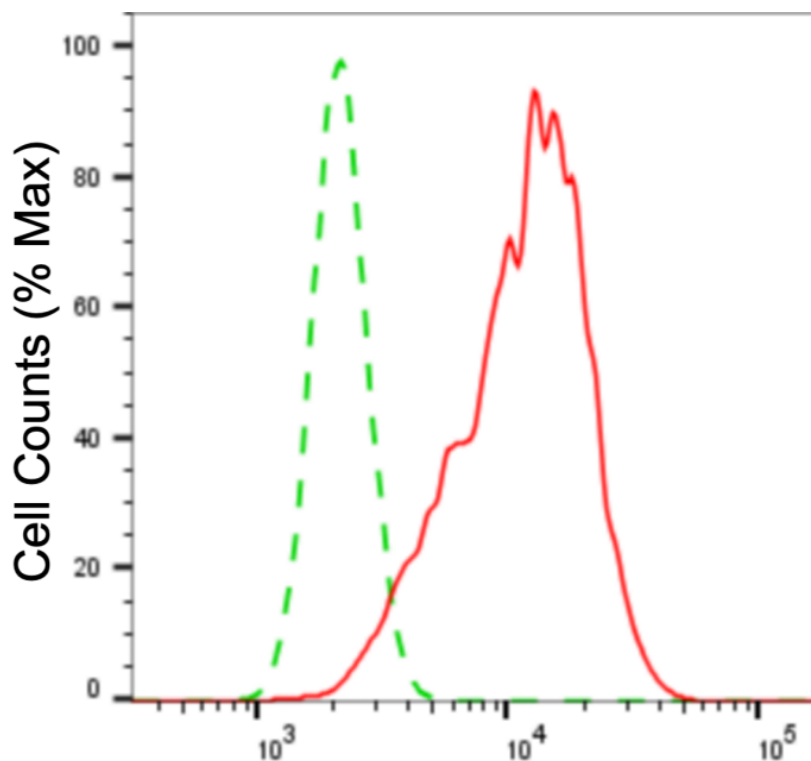
SALES@GENUINBIOTECH.COM
FAX: +1-540-855-7041

WWW.GENUINBIOTECH.COM

KD-Validated Anti-Kinesin light chain 1 Recombinant Rabbit Monoclonal Antibody

PAGE 2

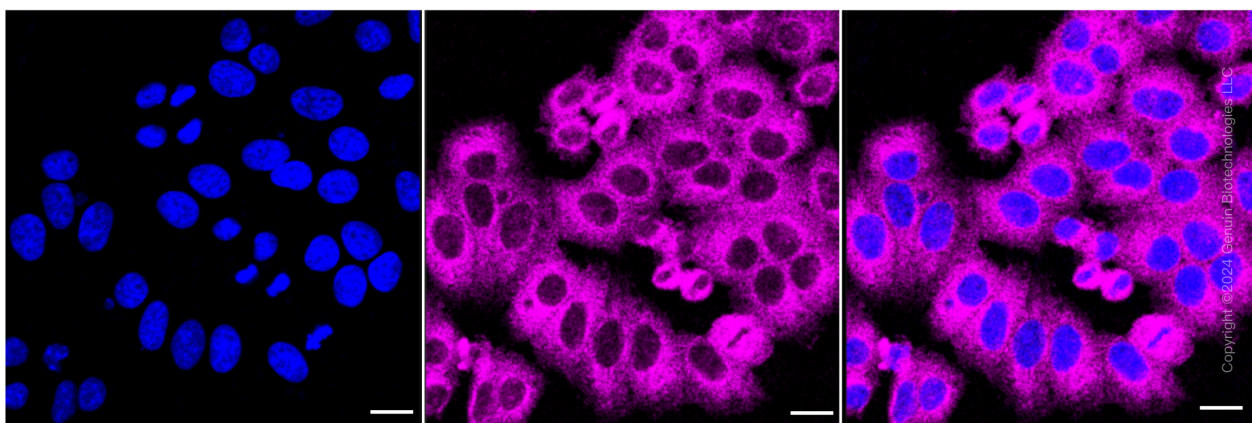
Validation Data



Copyright ©2024 Genuin Biotechnologies LLC

Kinesin light chain 1-Alexa Fluor® 647

Flow cytometric analysis of kinesin light chain 1 expression in HepG2 cells using kinesin light chain 1 antibody (Cat#61162, 1:2,000). Green, isotype control; red, kinesin light chain 1.



Copyright ©2024 Genuin Biotechnologies LLC

Immunocytochemical staining of HepG2 cells with anti-kinesin light chain 1 antibody (Cat#61162, 1:1,000). Nuclei were stained blue with DAPI; Kinesin light chain 1 was stained magenta with Alexa Fluor® 647. Images were taken using Leica stellaris 5. Protein abundance based on laser Intensity and smart gain: Medium. Scale bar: 20 µm.

SUPPORT

SUPPORT@GENUINBIOTECH.COM
TEL: +1-540-855-7041

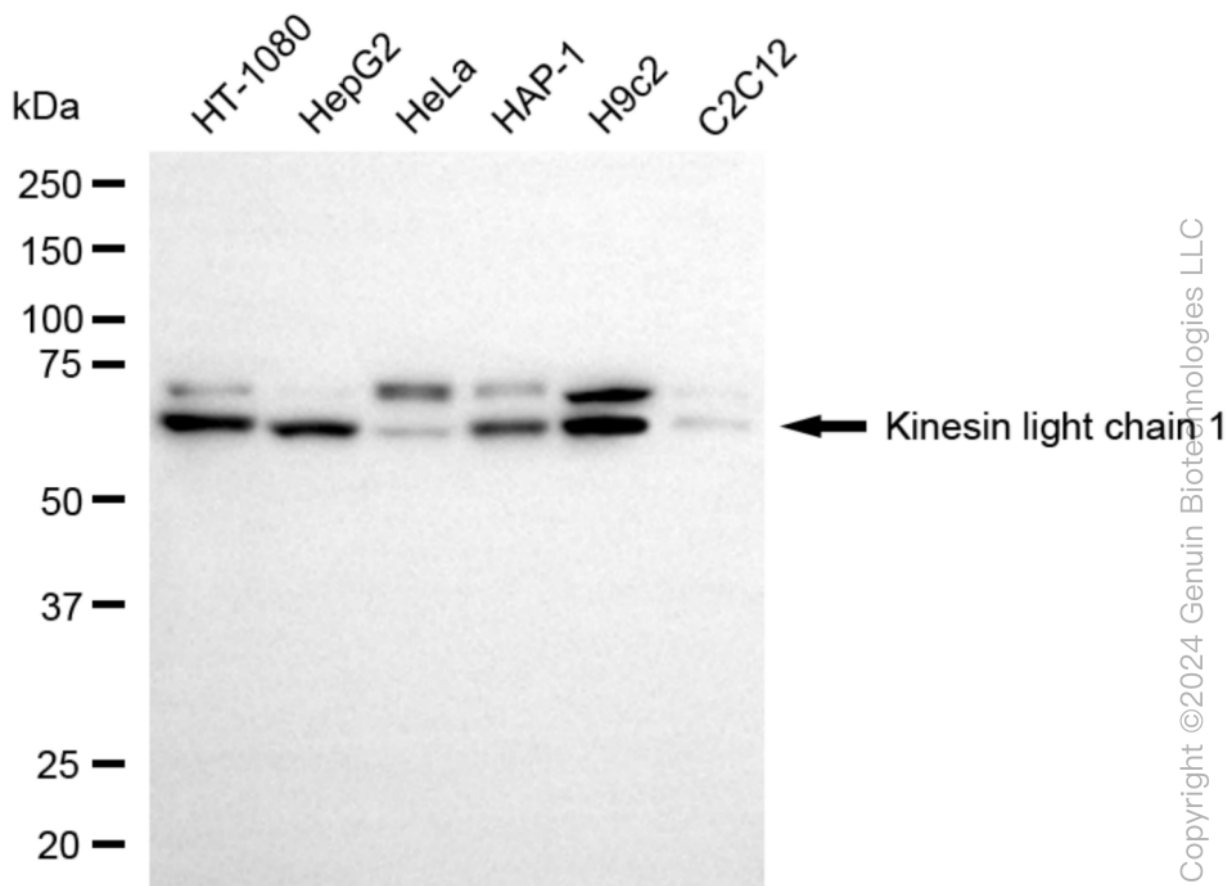
ORDERS

SALES@GENUINBIOTECH.COM
FAX: +1-540-855-7041

WWW.GENUINBIOTECH.COM

KD-Validated Anti-Kinesin light chain 1 Recombinant Rabbit Monoclonal Antibody

PAGE 3



Western blotting analysis using anti-kinesin light chain 1 antibody (Cat#61162). Total cell lysates (30 µg) from various cell lines were loaded and separated by SDS-PAGE. The blot was incubated with anti-kinesin light chain 1 antibody (Cat#61162, 1:5,000) and HRP-conjugated goat anti-rabbit secondary antibody (Cat#201, 1:20,000) respectively. Image was developed using NaQ™ ECL Substrate Kit (Cat#716).

SUPPORT

SUPPORT@GENUINBIOTECH.COM
TEL: +1-540-855-7041

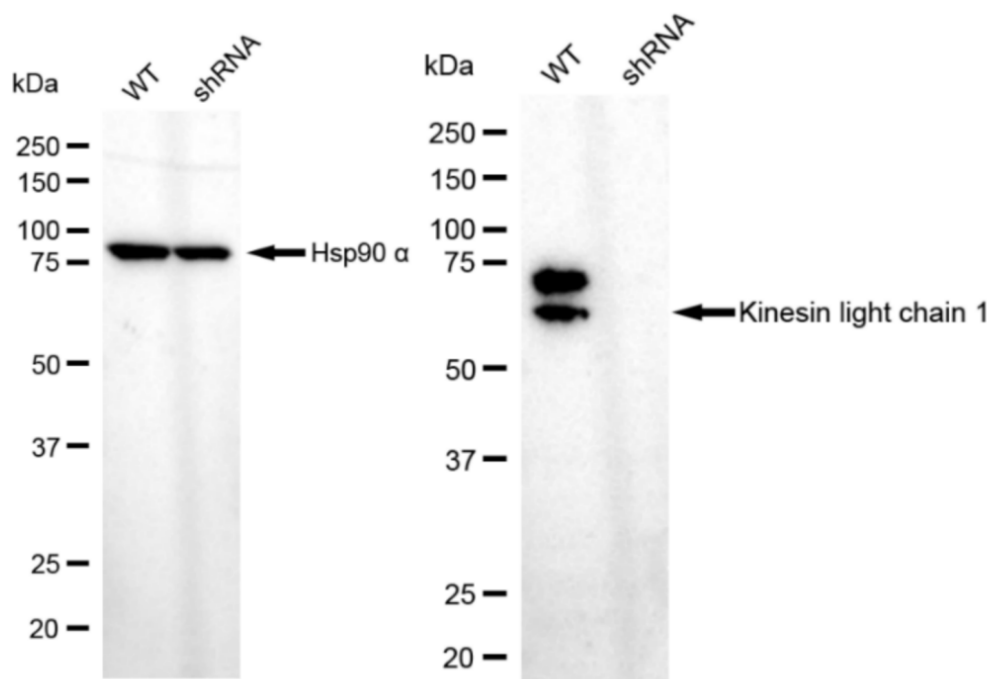
ORDERS

SALES@GENUINBIOTECH.COM
FAX: +1-540-855-7041

WWW.GENUINBIOTECH.COM

KD-Validated Anti-Kinesin light chain 1 Recombinant Rabbit Monoclonal Antibody

PAGE 4



Copyright ©2024 Genuin Biotechnologies LLC

Western blotting analysis using anti-kinesin light chain 1 antibody (Cat#61162). Kinesin light chain 1 expression in wild type (WT) and kinesin light chain 1 (KLC1) shRNA knockdown (KD) HeLa cells with 20 µg of total cell lysates. Hsp90 α serves as a loading control. The blot was incubated with anti-kinesin light chain 1 antibody (Cat#61162, 1:5,000) and HRP-conjugated goat anti-rabbit secondary antibody (Cat#201, 1:20,000) respectively. Image was developed using NaQ™ ECL Substrate Kit (Cat#716).

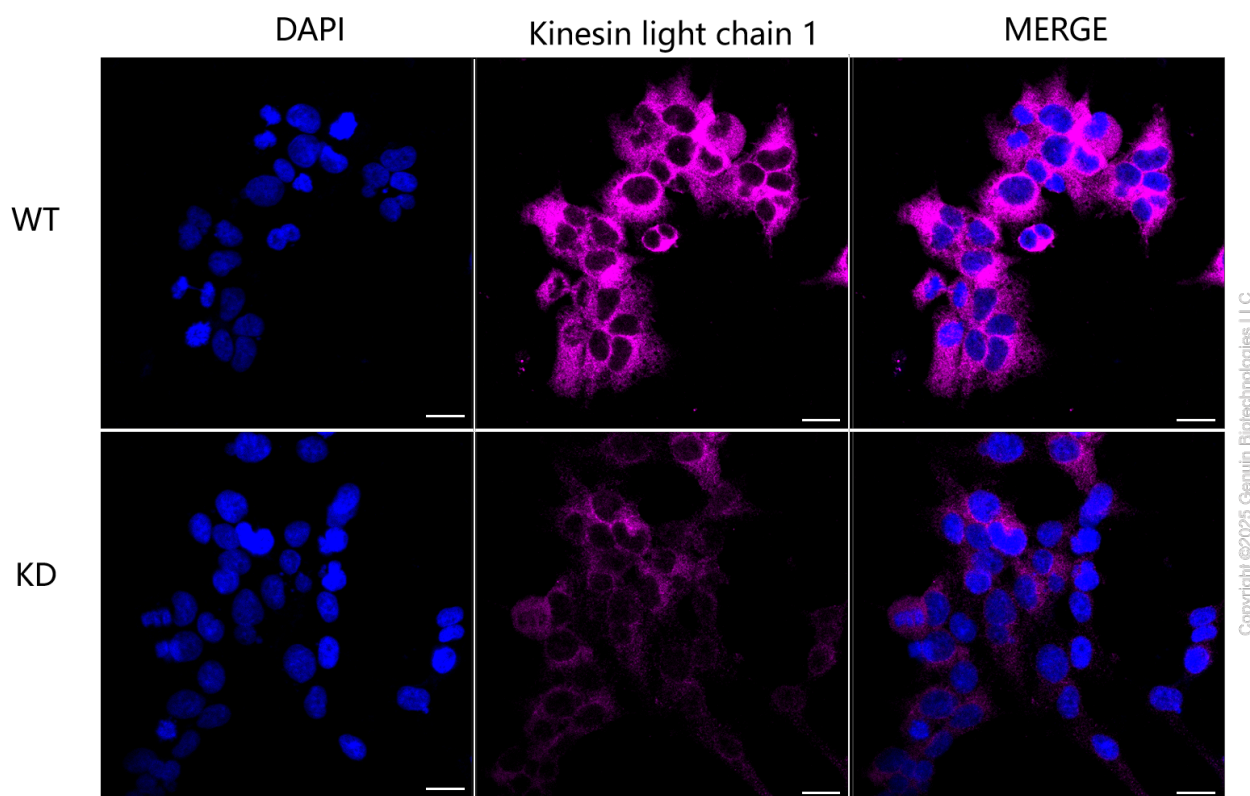
SUPPORT

SUPPORT@GENUINBIOTECH.COM
TEL: +1-540-855-7041

ORDERS

SALES@GENUINBIOTECH.COM
FAX: +1-540-855-7041

WWW.GENUINBIOTECH.COM



Immunocytochemical staining of Hela cells using anti-Kinesin light chain 1 antibody (Cat#61162, 1:1,000), Top panel: wild-type (WT); Bottom panel:Kinesin light chain 1 shRNA knockdown (KD). Nuclei were stained blue with DAPI;Kinesin light chain 1 was stained magenta with Alexa Fluor® 647. Scale bar, 20 μ m. Permeabilization: Triton.