

KD-Validated Anti-GTF2F2 Recombinant Rabbit Monoclonal Antibody



Catalog #: 61163

Aliases

GTF2F2; General Transcription Factor IIF Subunit 2; RAP30; TFIIF; BTF4; General Transcription Factor IIF, Polypeptide 2, 30kDa; Transcription Initiation Factor IIF Subunit Beta; General Transcription Factor IIF 30 KDa Subunit; Transcription Initiation Factor RAP30; TFIIF-Beta; General Transcription Factor IIF, Polypeptide 1 (74kD Subunit); ATP-Dependent Helicase GTF2F2; EC 3.6.1; TF2F2

Background

Gene Name: GTF2F2

NCBI Gene Entry: [2963](#)

UniProt Entry: [P13984](#)

Application Information

Molecular Weight: Predicted, 28 kDa, observed, 30 kDa

Clonality: Rabbit monoclonal antibody

Clone ID: 24GB6035

Species Reactivity: Human, mouse, rat

Applications Tested: Western blotting (WB), immunocytochemistry (IC)

Immunogen

A synthesized peptide derived from human GTF2F2

Isotype

Rabbit IgG

Storage Buffer

Supplied in PBS (pH 7.4) containing 50% glycerol, and 0.02% sodium azide.

Storage

Store at -20 °C for one year.

Recommended Dilutions

Western Blotting (WB): 1:1,000-1:5,000

Immunocytochemistry (IC): 1:100-1:1,000

SUPPORT

SUPPORT@GENUINBIOTECH.COM
TEL: +1-540-855-7041

ORDERS

SALES@GENUINBIOTECH.COM
FAX: +1-540-855-7041

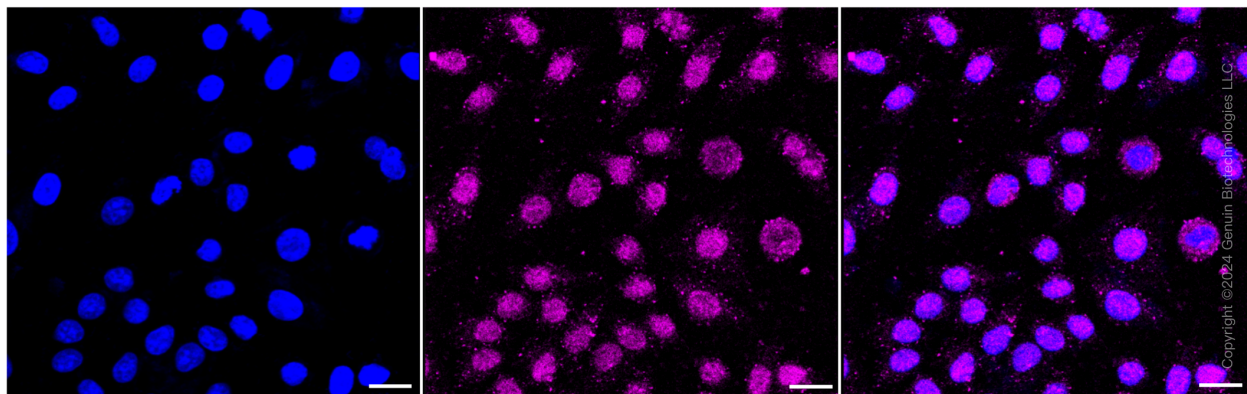
WWW.GENUINBIOTECH.COM

KD-Validated Anti-GTF2F2 Recombinant Rabbit Monoclonal Antibody

PAGE 2

Note: This product is for research use only.

Validation Data



Immunocytochemical staining of HepG2 cells with anti-GTF2F2 antibody (Cat#61163, 1:1,000). Nuclei were stained blue with DAPI; GTF2F2 was stained magenta with Alexa Fluor® 647. Images were taken using Leica stellaris 5. Protein abundance based on laser Intensity and smart gain: Low. Scale bar: 20 μ m.

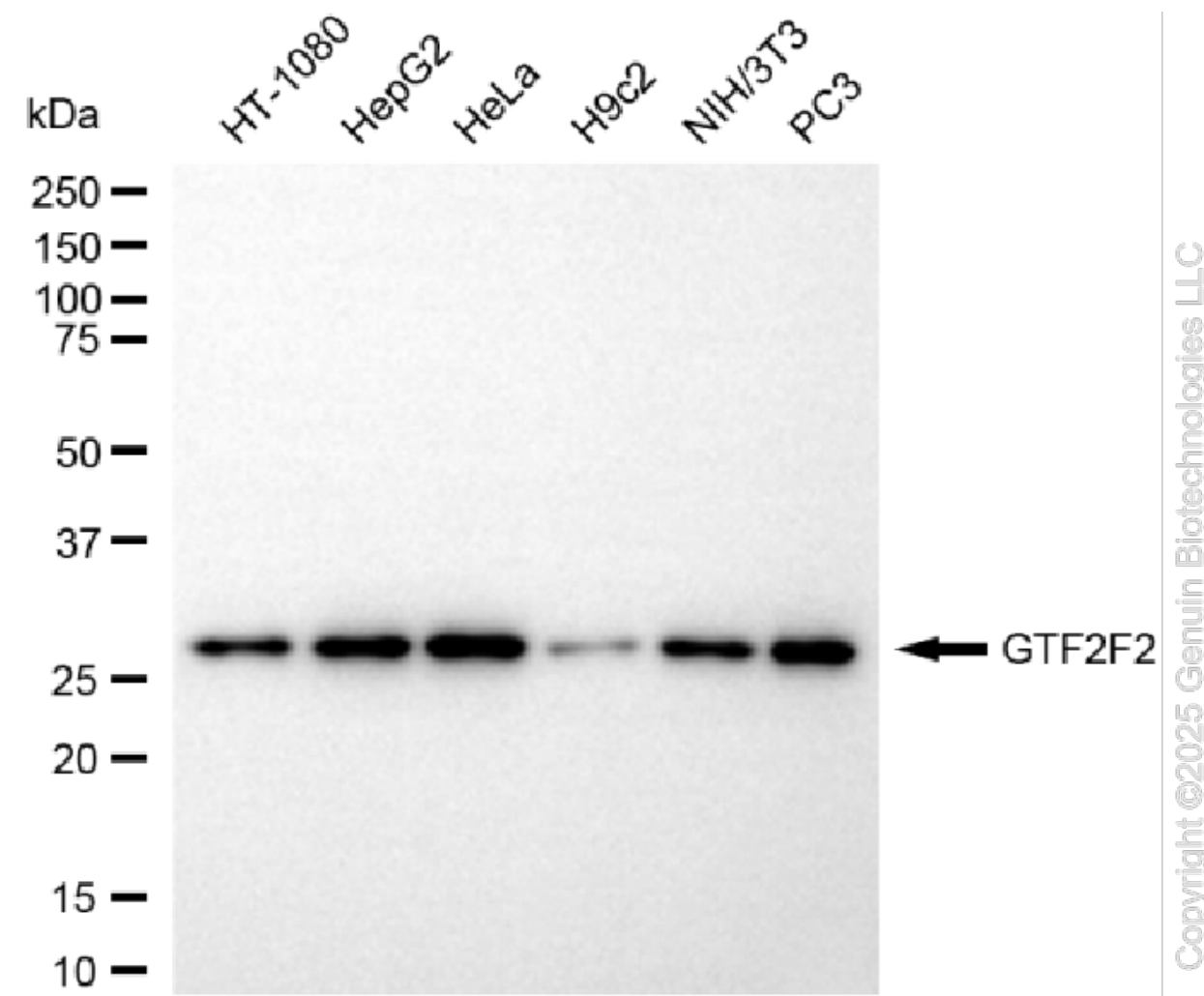
SUPPORT

SUPPORT@GENUINBIOTECH.COM
TEL: +1-540-855-7041

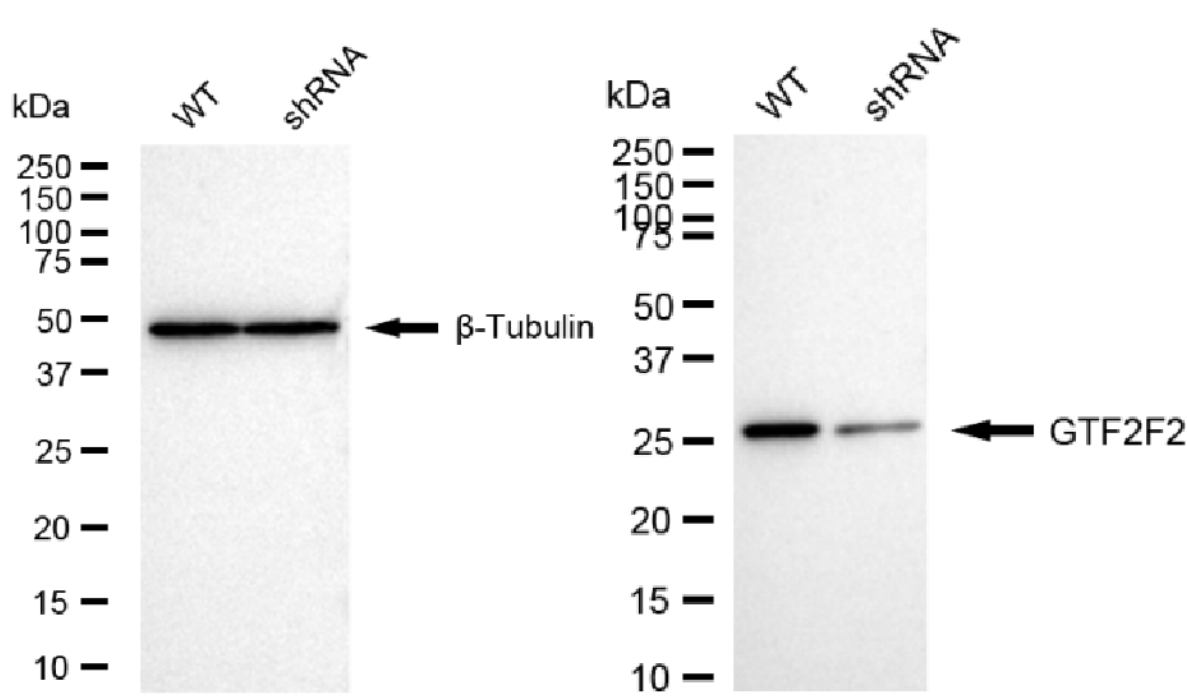
ORDERS

SALES@GENUINBIOTECH.COM
FAX: +1-540-855-7041

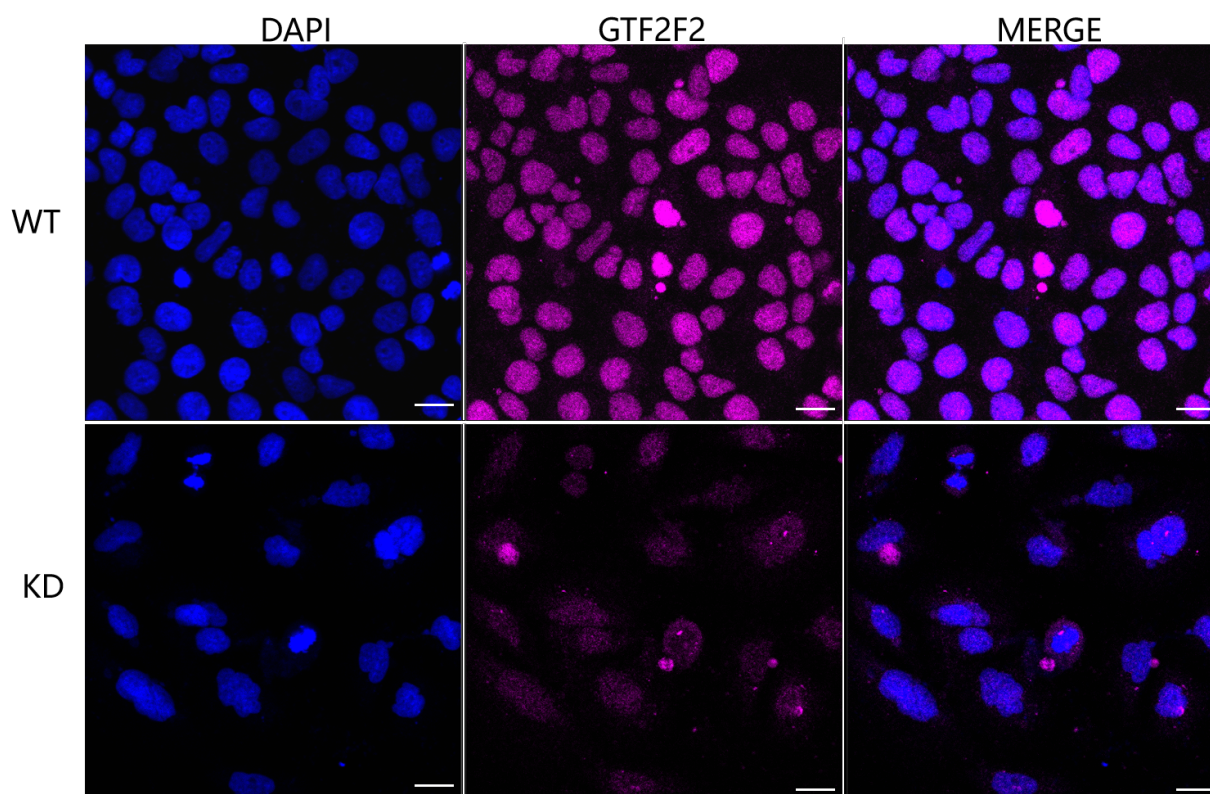
WWW.GENUINBIOTECH.COM



Western blotting analysis using anti-GTF2F2 antibody (Cat#61163). Total cell lysates (30 µg) from various cell lines were loaded and separated by SDS-PAGE. The blot was incubated with anti-GTF2F2 antibody (Cat#61163, 1:5,000) and HRP-conjugated goat anti-rabbit secondary antibody (Cat#201, 1:20,000) respectively. Image was developed using NaQ™ ECL Substrate Kit (Cat#716).



Western blotting analysis using anti-GTF2F2 antibody (Cat#61163). GTF2F2 expression in wild type (WT) and GTF2F2 shRNA knockdown (KD) HeLa cells with 20 μ g of total cell lysates. β -Tubulin serves as a loading control. The blot was incubated with anti-GTF2F2 antibody (Cat#61163, 1:5,000) and HRP-conjugated goat anti-rabbit secondary antibody (Cat#201, 1:20,000) respectively. Image was developed using NaQ™ ECL Substrate Kit (Cat#716).



KD-Validated Anti-GTF2F2 Recombinant Rabbit Monoclonal Antibody

PAGE 5

Immunocytochemical staining of HeLa cells using anti-GTF2F2 antibody (Cat#61163, 1:1,000), Top panel: wild-type (WT); Bottom panel: GTF2F2 shRNA knockdown (KD). Nuclei were stained blue with DAPI;GTF2F2 was stained magenta with Alexa Fluor® 647. Scale bar, 20 µm. Permeabilization: Triton.

SUPPORT

SUPPORT@GENUINBIOTECH.COM
TEL: +1-540-855-7041

ORDERS

SALES@GENUINBIOTECH.COM
FAX:+1-540-855-7041

WWW.GENUINBIOTECH.COM