

# KD-Validated Anti-MHC class 1 Recombinant Rabbit Monoclonal Antibody



**Catalog #: 61166**

## Aliases

HLA-A; Major Histocompatibility Complex, Class I, A; HLA Class I Histocompatibility Antigen, A Alpha Chain; HLAA; HLA Class I Histocompatibility Antigen, A-1 Alpha Chain; MHC Class I Antigen HLA-A Heavy Chain; Leukocyte Antigen Class I-A; Human Leukocyte Antigen A

## Background

Gene Name: HLA-A

NCBI Gene Entry: [3105](#)

UniProt Entry: [P04439](#)

## Application Information

Molecular Weight: Predicted, 41 kDa, observed, 41 kDa

Clonality: Rabbit monoclonal antibody

Clone ID: 24GB6040

Species Reactivity: Human, mouse, rat

Applications Tested: Western blotting (WB), flow cytometry (FCM), immunocytochemistry (IC)

## Immunogen

A synthesized peptide derived from human MHC class 1

## Isotype

Rabbit IgG

## Storage Buffer

Supplied in PBS (pH 7.4) containing 50% glycerol, and 0.02% sodium azide.

## Storage

Store at -20 °C for one year.

## Recommended Dilutions

Western Blotting (WB): 1:1,000-1:5,000

Flow Cytometry (FCM): 1:2,000

Immunocytochemistry (IC): 1:100-1:1,000

**Note:** This product is for research use only.

---

### SUPPORT

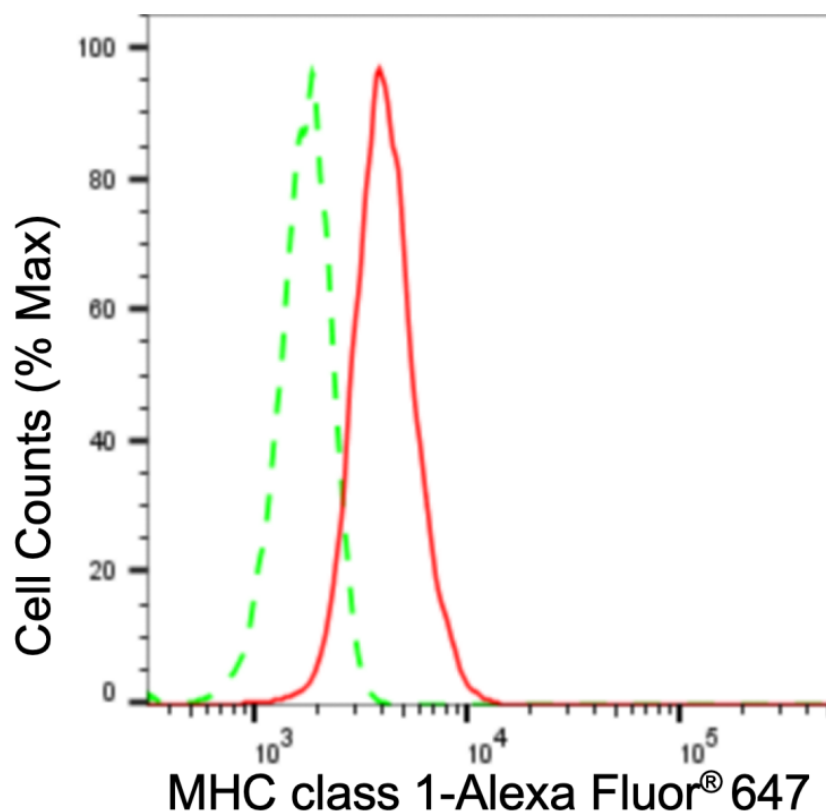
SUPPORT@GENUINBIOTECH.COM  
TEL: +1-540-855-7041

### ORDERS

SALES@GENUINBIOTECH.COM  
FAX: +1-540-855-7041

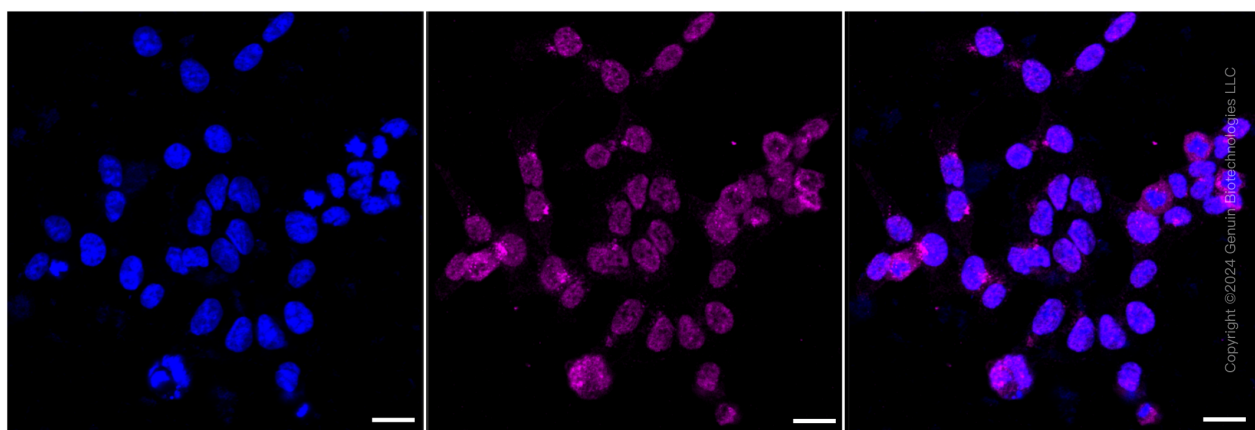
[WWW.GENUINBIOTECH.COM](http://WWW.GENUINBIOTECH.COM)

**Validation Data**



Copyright ©2024 Genuin Biotechnologies LLC

Flow cytometric analysis of MHC class 1 expression in HeLa cells using MHC class 1 antibody (Cat#61166, 1:2,000). Green, isotype control; red, MHC class 1.



Immunocytochemical staining of HAP-1 cells with anti-MHC class 1 antibody (Cat#61166, 1:1,000). Nuclei were stained blue with DAPI; MHC class 1 was stained magenta with Alexa Fluor® 647. Images were taken using Leica stellaris 5. Protein abundance based on laser Intensity and smart gain:High . Scale bar, 20 µm.

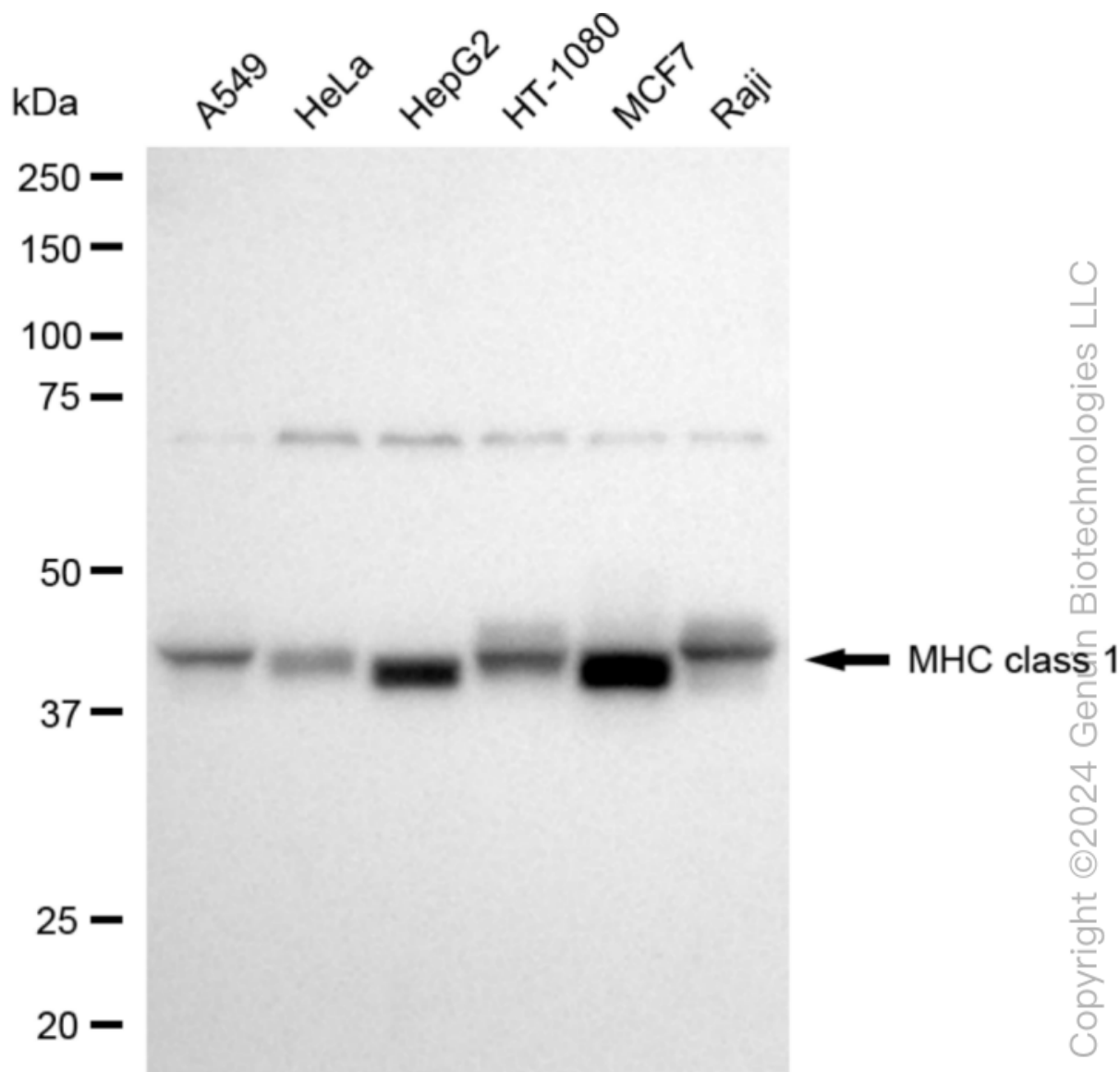
**SUPPORT**

SUPPORT@GENUINBIOTECH.COM  
TEL: +1-540-855-7041

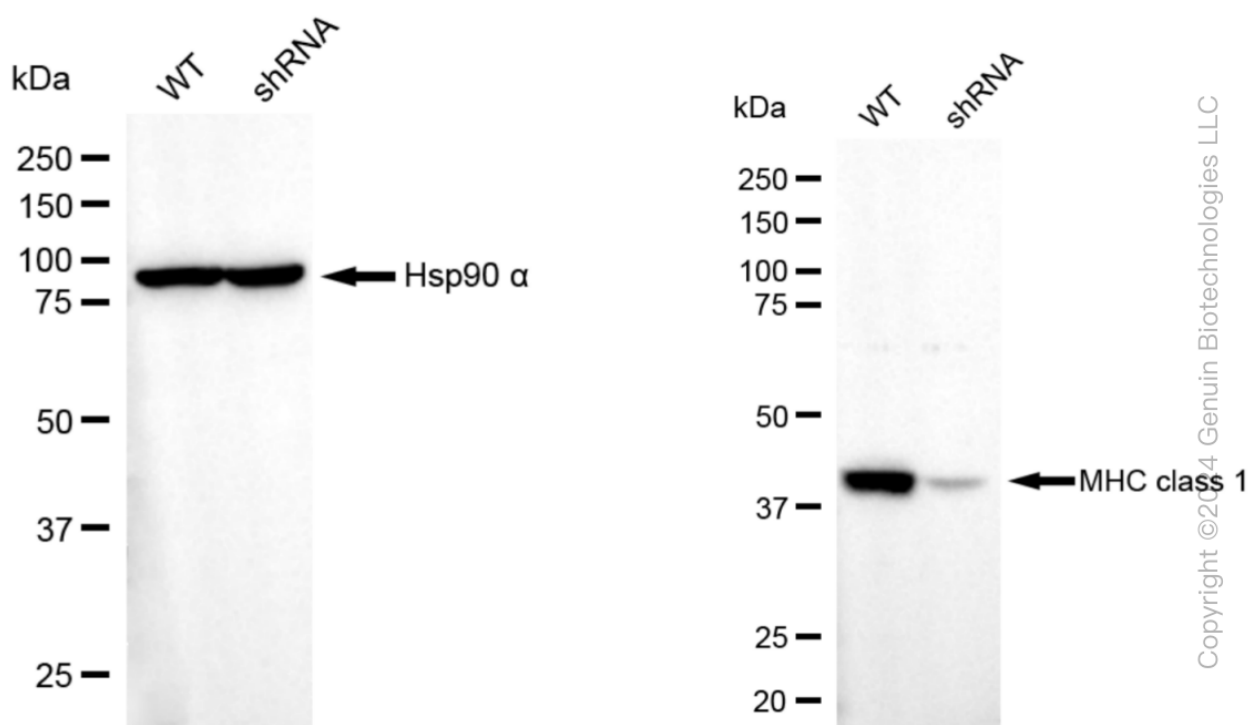
**ORDERS**

SALES@GENUINBIOTECH.COM  
FAX: +1-540-855-7041

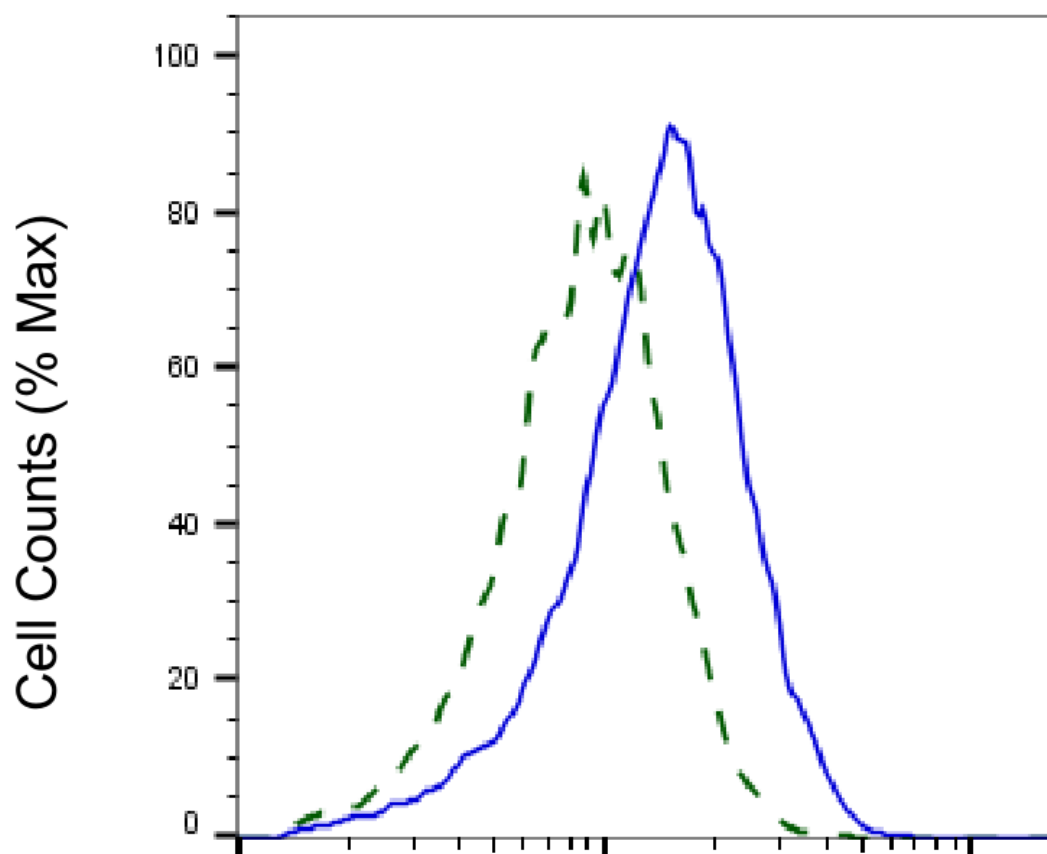
**WWW.GENUINBIOTECH.COM**



Western blotting analysis using anti-MHC class 1 antibody (Cat#61166). Total cell lysates (30 µg) from various cell lines were loaded and separated by SDS-PAGE. The blot was incubated with anti-MHC class 1 antibody (Cat#61166, 1:5,000) and HRP-conjugated goat anti-rabbit secondary antibody (Cat#201, 1:20,000) respectively. Image was developed using NaQ™ ECL Substrate Kit (Cat#716).



Western blotting analysis using anti-MHC class 1 antibody (Cat#61166). MHC class 1 expression in wild type (WT) and HLA-A shRNA knockdown (KD) HT-1080 cells with 20 µg of total cell lysates. Hsp90 α serves as a loading control. The blot was incubated with anti-MHC class 1 antibody (Cat#61166, 1:5,000) and HRP-conjugated goat anti-rabbit secondary antibody (Cat#201, 1:20,000) respectively. Image was developed using NaQ™ ECL Substrate Kit (Cat#716). HLA-A, Major Histocompatibility Complex, Class I.



Copyright ©2025 Genuin Biotechnologies LLC

## MHC class 1-Alexa Fluor® 647

Validation of MHC class 1 knockdown using flow cytometry. Wild-type(WT, Blue) and knockdown(KD, Green) HT-1080 cells were stained with anti-MHC class 1 antibody (Cat#61166, 1:2,000) and analyzed using BD flow cytometer.