

# KD-Validated Anti-RPS6KA1 Recombinant Rabbit Monoclonal Antibody



**Catalog #: 61167**

## Aliases

RPS6KA1; Ribosomal Protein S6 Kinase A1; RSK1; MAPKAPK1; HU-1; MAP Kinase-Activated Protein Kinase 1a; 90 KDa Ribosomal Protein S6 Kinase 1; Ribosomal Protein S6 Kinase Alpha-1; MAPK-Activated Protein Kinase 1a; Ribosomal S6 Kinase 1; MAPKAP Kinase 1a; EC 2.7.11.1; MAPKAPK-1a; MAPKAPK1A; P90-RSK 1; P90RSK1; P90Rsk; P90S6K; RSK-1; DJ590P13.1 (Ribosomal Protein S6 Kinase, 90kD, Polypeptide 1); Ribosomal Protein S6 Kinase, 90kDa, Polypeptide 1; Ribosomal Protein S6 Kinase, 90kD, Polypeptide 1; S6K-Alpha 1; S6K-Alpha-1; EC 2.7.11; P90RSK; RSK

## Background

Gene Name: RPS6KA1

NCBI Gene Entry: [6195](#)

UniProt Entry: [Q15418](#)

## Application Information

Molecular Weight: Predicted, 82 kDa, observed, 83 kDa

Clonality: Rabbit monoclonal antibody

Clone ID: 23GB2080

Species Reactivity: Human

Applications Tested: Western blotting (WB), flow cytometry (FCM), immunocytochemistry (IC)

## Immunogen

A synthesized peptide derived from human RSK1 p90

## Isotype

Rabbit IgG

## Storage Buffer

Supplied in PBS (pH 7.4) containing 50% glycerol, and 0.02% sodium azide.

## Storage

Store at -20 °C for one year.

## Recommended Dilutions

Western Blotting (WB): 1:1,000-1:5,000

Flow Cytometry (FCM): 1:2,000

---

### SUPPORT

SUPPORT@GENUINBIOTECH.COM  
TEL: +1-540-855-7041

### ORDERS

SALES@GENUINBIOTECH.COM  
FAX: +1-540-855-7041

[WWW.GENUINBIOTECH.COM](http://WWW.GENUINBIOTECH.COM)

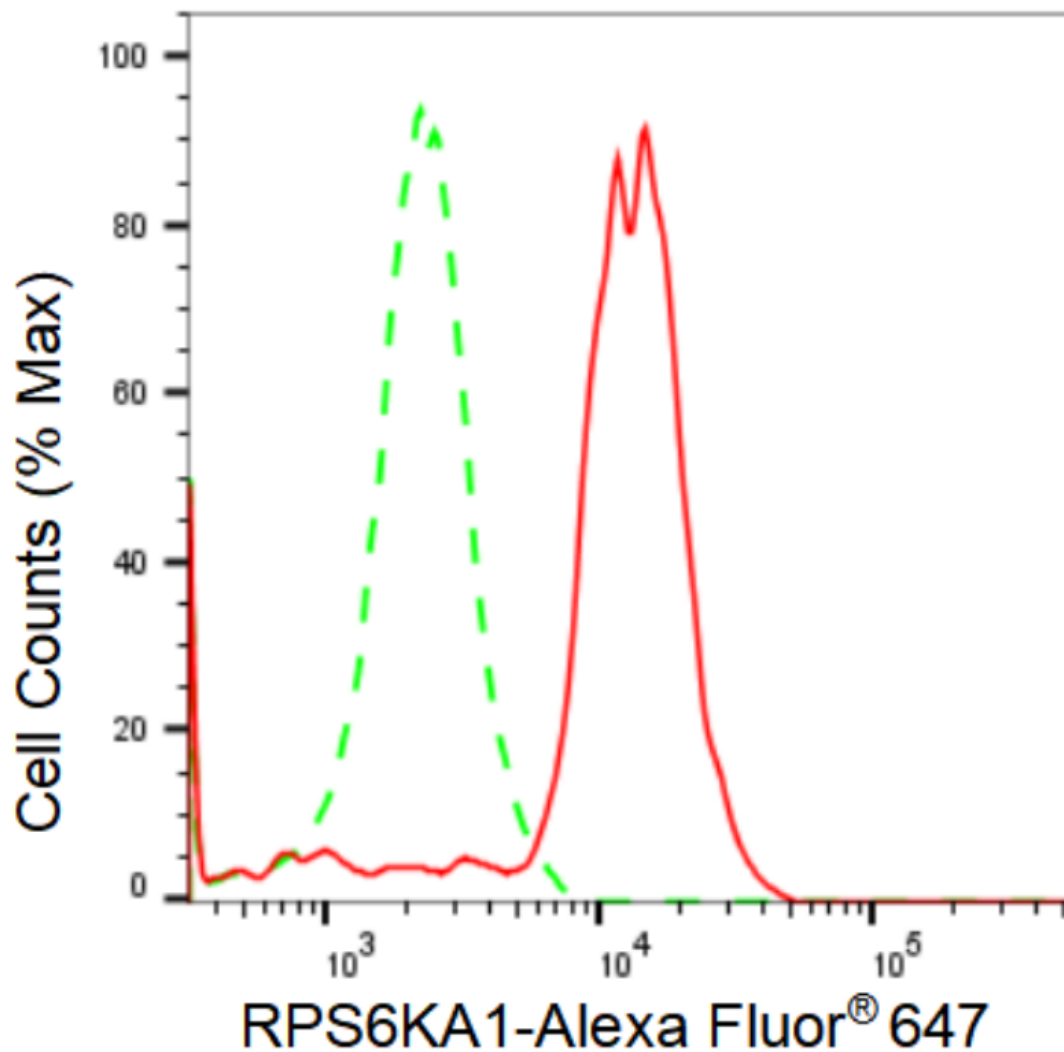
# KD-Validated Anti-RPS6KA1 Recombinant Rabbit Monoclonal Antibody

PAGE 2

Immunocytochemistry (IC): 1:100-1:1,000

**Note:** This product is for research use only.

## Validation Data



Copyright ©2024 Genuin Biotechnologies LLC

Flow cytometric analysis of RPS6KA1 expression in HeLa cells using RPS6KA1 antibody (Cat#61167, 1:2,000). Green, isotype control; red, RPS6KA1.

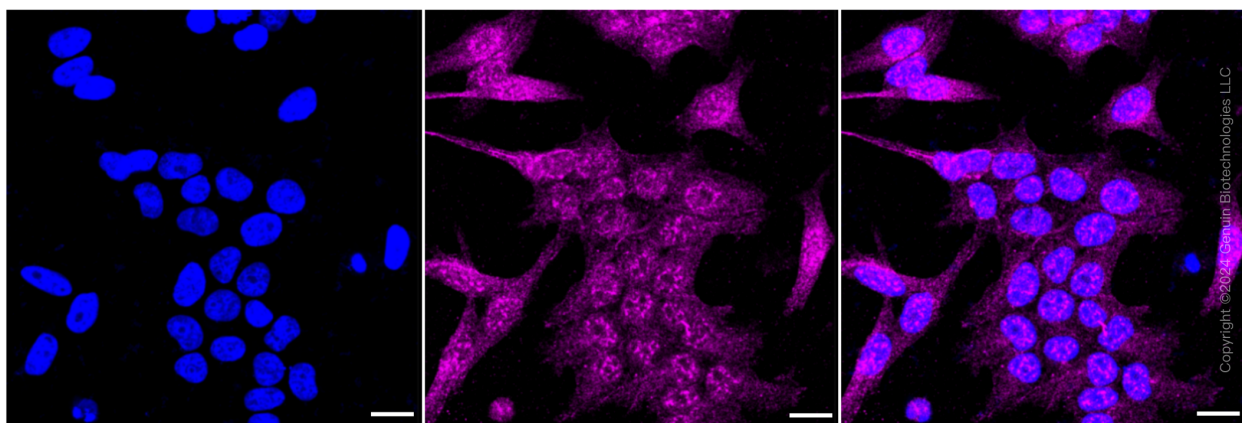
### SUPPORT

SUPPORT@GENUINBIOTECH.COM  
TEL: +1-540-855-7041

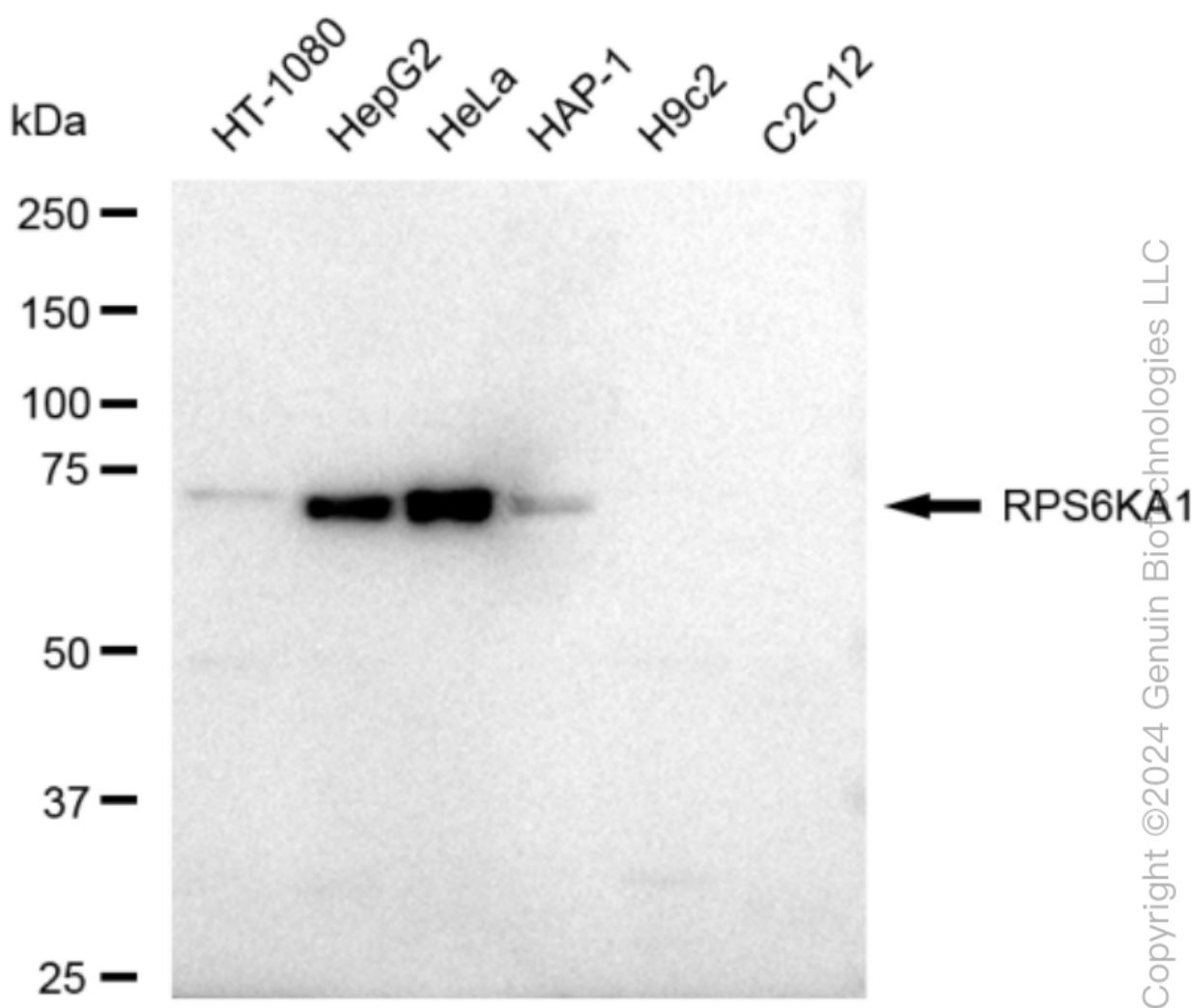
### ORDERS

SALES@GENUINBIOTECH.COM  
FAX: +1-540-855-7041

[WWW.GENUINBIOTECH.COM](http://WWW.GENUINBIOTECH.COM)



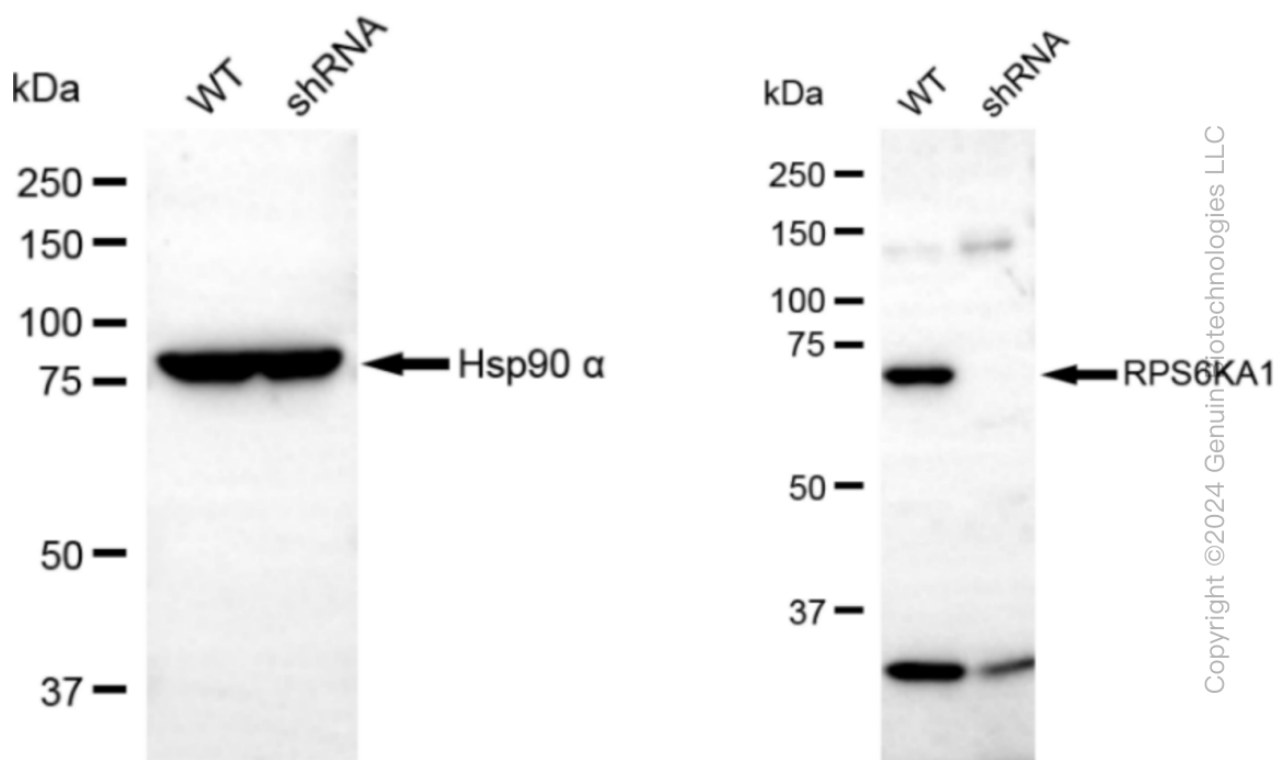
Immunocytochemical staining of HeLa cells with RPS6KA1 antibody (Cat#61167, 1:1,000). Nuclei were stained blue with DAPI; RPS6KA1 was stained magenta with Alexa Fluor® 647. Images were taken using Leica stellaris 5. Protein abundance based on laser Intensity and smart gain: Medium. Scale bar: 20  $\mu$ m.



## KD-Validated Anti-RPS6KA1 Recombinant Rabbit Monoclonal Antibody

PAGE 4

Western blotting analysis using anti-RPS6KA1 antibody (Cat#61167). Total cell lysates (30  $\mu$ g) from various cell lines were loaded and separated by SDS-PAGE. The blot was incubated with anti-RPS6KA1 antibody (Cat#61167, 1:5,000) and HRP-conjugated goat anti-rabbit secondary antibody (Cat#201, 1:20,000) respectively. Image was developed using FeQ™ ECL Substrate Kit (Cat#226).



Western blotting analysis using anti-RPS6KA1 antibody (Cat#61167). RPS6KA1 expression in wild type (WT) and RPS6KA1 shRNA knockdown (KD) HeLa cells with 30  $\mu$ g of total cell lysates.  $\beta$ -Tubulin serves as a loading control. The blot was incubated with anti-RPS6KA1 antibody (Cat#61167, 1:5,000) and HRP-conjugated goat anti-rabbit secondary antibody (Cat#201, 1:20,000) respectively. Image was developed using FeQ™ ECL Substrate Kit (Cat#226).

### SUPPORT

SUPPORT@GENUINBIOTECH.COM  
TEL: +1-540-855-7041

### ORDERS

SALES@GENUINBIOTECH.COM  
FAX: +1-540-855-7041

[WWW.GENUINBIOTECH.COM](http://WWW.GENUINBIOTECH.COM)