

# KD-Validated Anti-NEK2 Recombinant Rabbit Monoclonal Antibody



**Catalog #: 61168**

## Aliases

NEK2; NIMA Related Kinase 2; NEK2A; NLK1; PPP1R111; RP67; NIMA (Never In Mitosis Gene A)-Related Kinase 2; Protein Phosphatase 1, Regulatory Subunit 111; Serine/Threonine-Protein Kinase Nek2; NimA-Related Protein Kinase; NimA-Like Protein Kinase 1; EC 2.7.11.1; Never In Mitosis A-Related Kinase; EC 2.7.11; HsPK 21; HSPK 21; HsPK21

## Background

Gene Name: NEK2

NCBI Gene Entry: [4751](#)

UniProt Entry: [P51955](#)

## Application Information

Molecular Weight: Predicted, 52 kDa, observed, 48 kDa

Clonality: Rabbit monoclonal antibody

Clone ID: 23GB2085

Species Reactivity: Human

Applications Tested: Western blotting (WB), flow cytometry (FCM), immunocytochemistry (IC)

## Immunogen

A synthesized peptide derived from human NEK2

## Isotype

Rabbit IgG

## Storage Buffer

Supplied in PBS (pH 7.4) containing 50% glycerol, and 0.02% sodium azide.

## Storage

Store at -20 °C for one year.

## Recommended Dilutions

Western Blotting (WB): 1:1,000-1:5,000

Flow Cytometry (FCM): 1:2,000

Immunocytochemistry (IC): 1:100-1:1,000

---

### SUPPORT

SUPPORT@GENUINBIOTECH.COM  
TEL: +1-540-855-7041

### ORDERS

SALES@GENUINBIOTECH.COM  
FAX: +1-540-855-7041

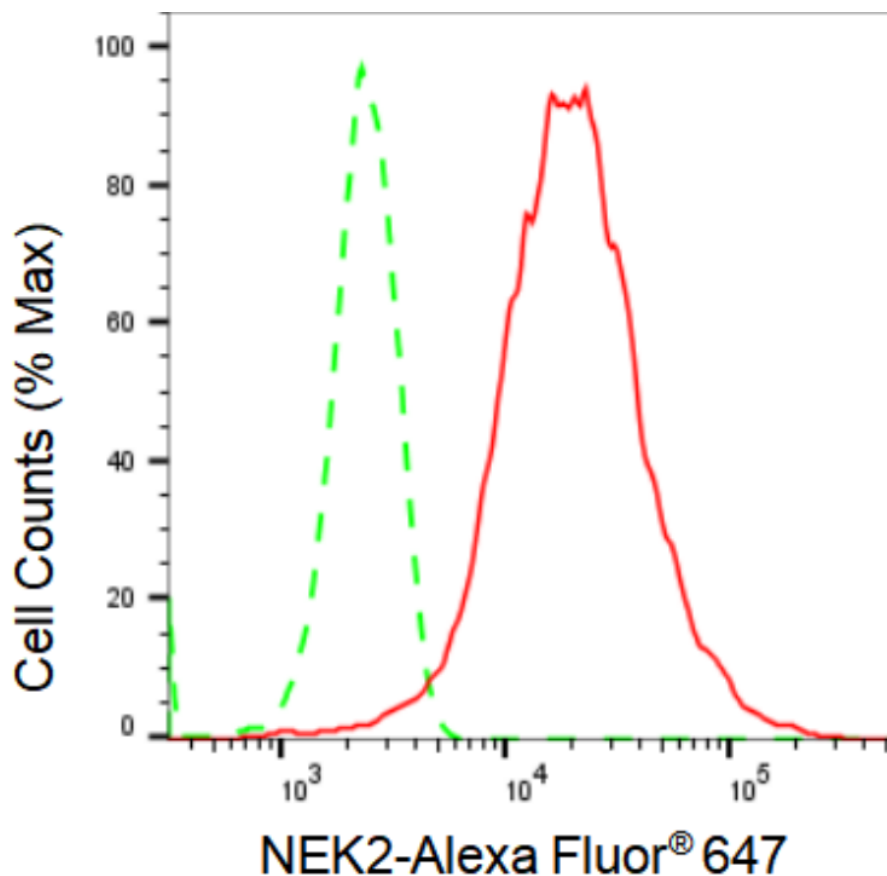
[WWW.GENUINBIOTECH.COM](http://WWW.GENUINBIOTECH.COM)

# KD-Validated Anti-NEK2 Recombinant Rabbit Monoclonal Antibody

PAGE 2

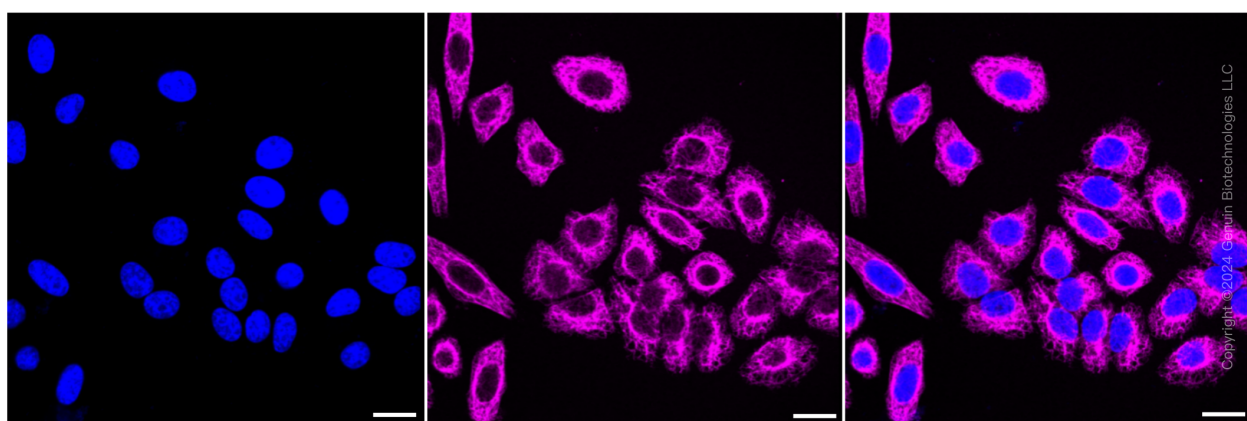
**Note:** This product is for research use only.

## Validation Data



Copyright ©2024 Genuin Biotechnologies LLC

Flow cytometric analysis of NEK2 expression in HepG2 cells using NEK2 antibody (Cat#61168, 1:2,000). Green, isotype control; red, NEK2.



Copyright ©2024 Genuin Biotechnologies LLC

### SUPPORT

SUPPORT@GENUINBIOTECH.COM  
TEL: +1-540-855-7041

### ORDERS

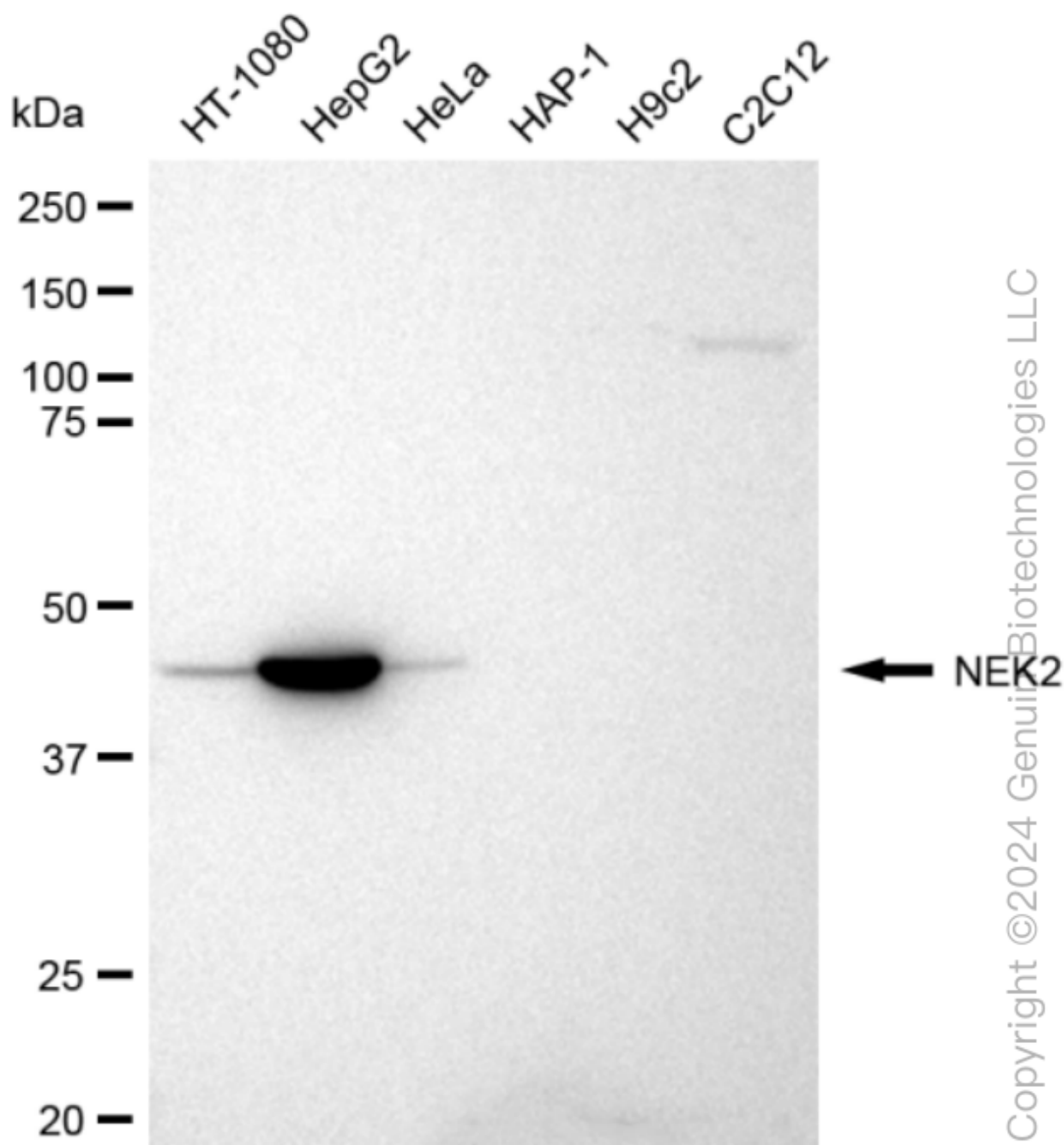
SALES@GENUINBIOTECH.COM  
FAX: +1-540-855-7041

[WWW.GENUINBIOTECH.COM](http://WWW.GENUINBIOTECH.COM)

## KD-Validated Anti-NEK2 Recombinant Rabbit Monoclonal Antibody

PAGE 3

Scale bar: 20  $\mu$ m.



Western blotting analysis using anti-NEK2 antibody (Cat#61168). Total cell lysates (30  $\mu$ g) from various cell lines were loaded and separated by SDS-PAGE. The blot was incubated with anti-NEK2 antibody (Cat#61168, 1:5,000) and HRP-conjugated goat anti-rabbit secondary antibody (Cat#201, 1:20,000) respectively. Image was developed using FeQ™ ECL Substrate Kit (Cat#226).

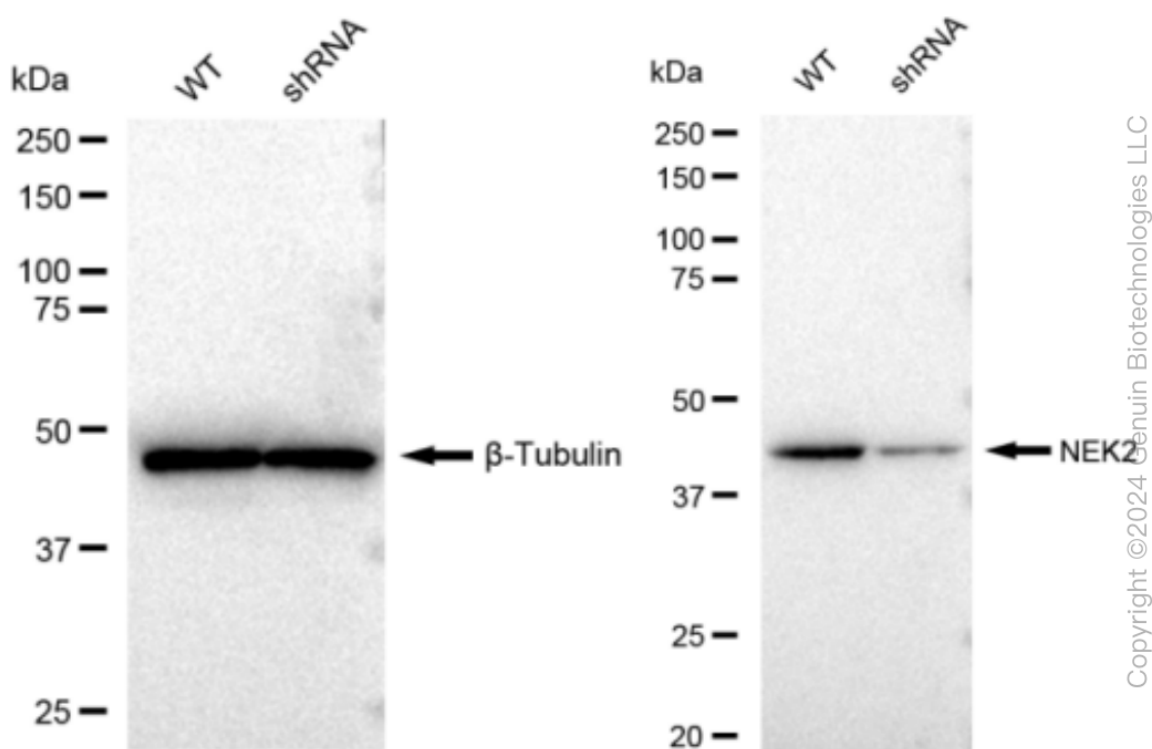
### SUPPORT

SUPPORT@GENUINBIOTECH.COM  
TEL: +1-540-855-7041

### ORDERS

SALES@GENUINBIOTECH.COM  
FAX: +1-540-855-7041

WWW.GENUINBIOTECH.COM



Western blotting analysis using anti-NEK2 antibody (Cat#61168). NEK2 expression in wild type (WT) and NEK2 shRNA knockdown (KD) HeLa cells with 30  $\mu$ g of total cell lysates.  $\beta$ -Tubulin serves as a loading control. The blot was incubated with anti-NEK2 antibody (Cat#61168, 1:5,000) and HRP-conjugated goat anti-rabbit secondary antibody (Cat#201, 1:20,000) respectively. Image was developed using FeQ™ ECL Substrate Kit (Cat#226).