

KD-Validated Anti-Histone acetyltransferase 1 Recombinant Rabbit Monoclonal Antibody



Catalog #: 61169

Aliases

HAT1; Histone Acetyltransferase 1; KAT1; Histone Acetyltransferase Type B Catalytic Subunit;
EC 2.3.1.48

Background

Gene Name: HAT1

NCBI Gene Entry: [8520](#)

UniProt Entry: [O14929](#)

Application Information

Molecular Weight: Predicted, 50 kDa, observed, 45 kDa

Clonality: Rabbit monoclonal antibody

Clone ID: 23GB2090

Species Reactivity: Human, mouse, rat

Applications Tested: Western blotting (WB), flow cytometry (FCM), immunocytochemistry (IC)

Immunogen

A synthesized peptide derived from human KAT1 / HAT1

Isotype

Rabbit IgG

Storage Buffer

Supplied in PBS (pH 7.4) containing 50% glycerol, and 0.02% sodium azide.

Storage

Store at -20 °C for one year.

Recommended Dilutions

Western Blotting (WB): 1:1,000-1:5,000

Flow Cytometry (FCM): 1:2,000

Immunocytochemistry (IC): 1:100-1:1,000

Note: This product is for research use only.

Validation Data

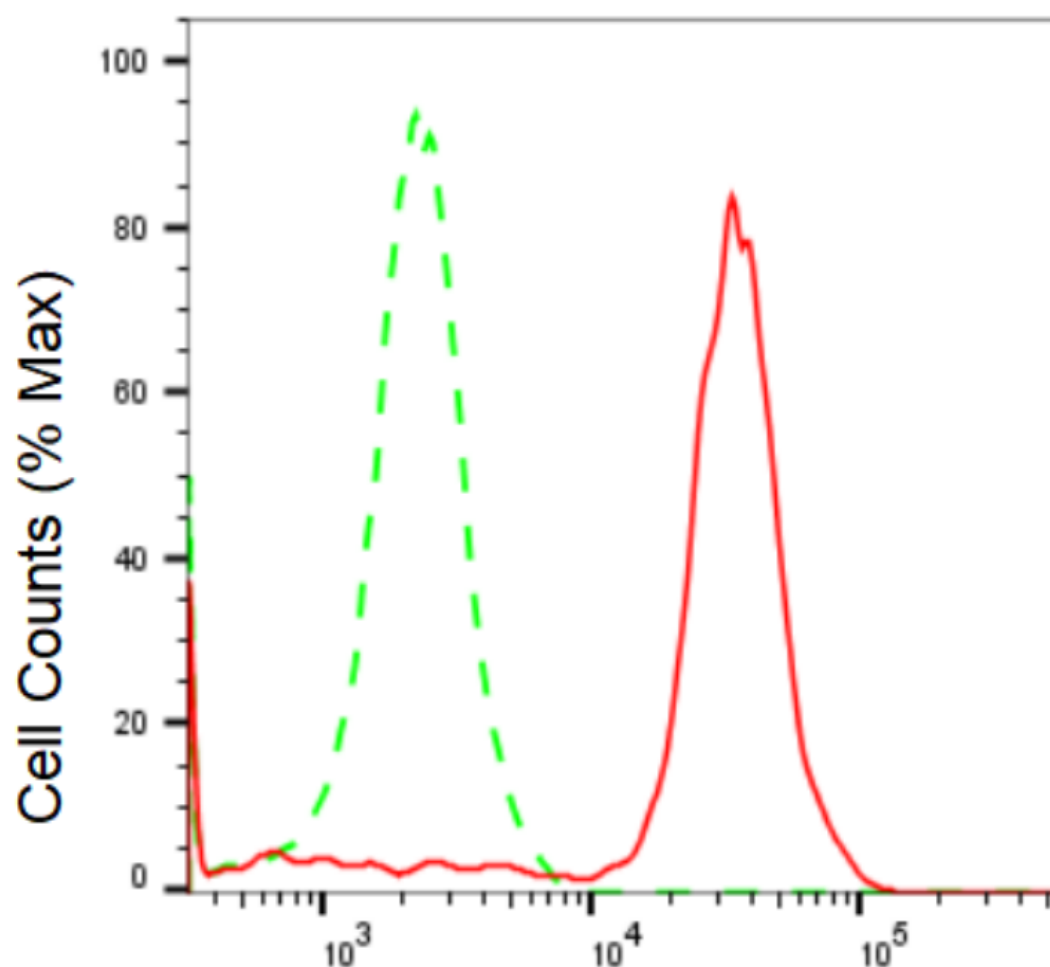
SUPPORT

SUPPORT@GENUINBIOTECH.COM
TEL: +1-540-855-7041

ORDERS

SALES@GENUINBIOTECH.COM
FAX: +1-540-855-7041

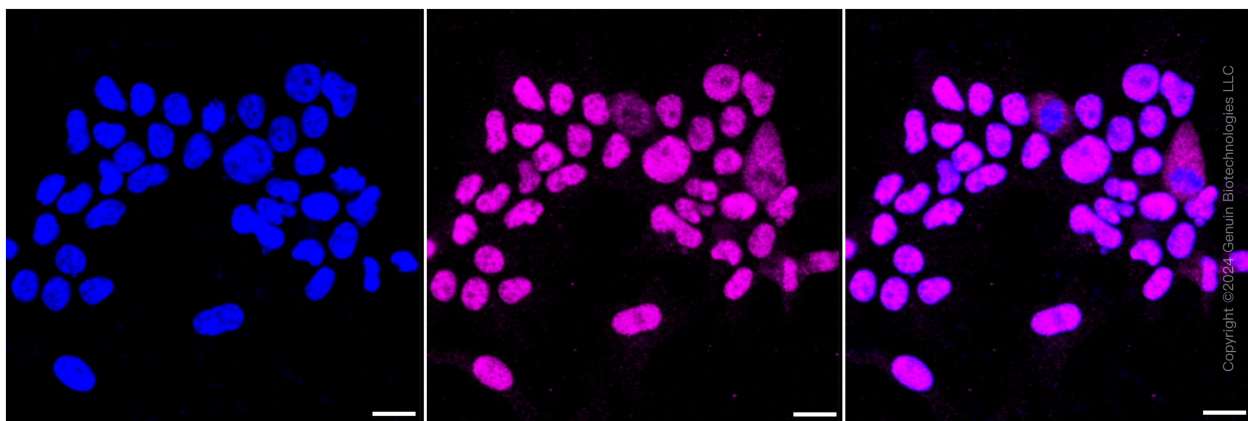
WWW.GENUINBIOTECH.COM



Copyright ©2024 Genuin Biotechnologies LLC

Histone acetyltransferase 1-Alexa Fluor® 647

Flow cytometric analysis of Histone acetyltransferase 1 expression in HeLa cells using Histone acetyltransferase 1 antibody (Cat#61169, 1:2,000). Green, isotype control; red, Histone acetyltransferase 1.



Immunocytochemical staining of Hela cells with Histone acetyltransferase 1 antibody (Cat#61169,

SUPPORT

SUPPORT@GENUINBIOTECH.COM
TEL: +1-540-855-7041

ORDERS

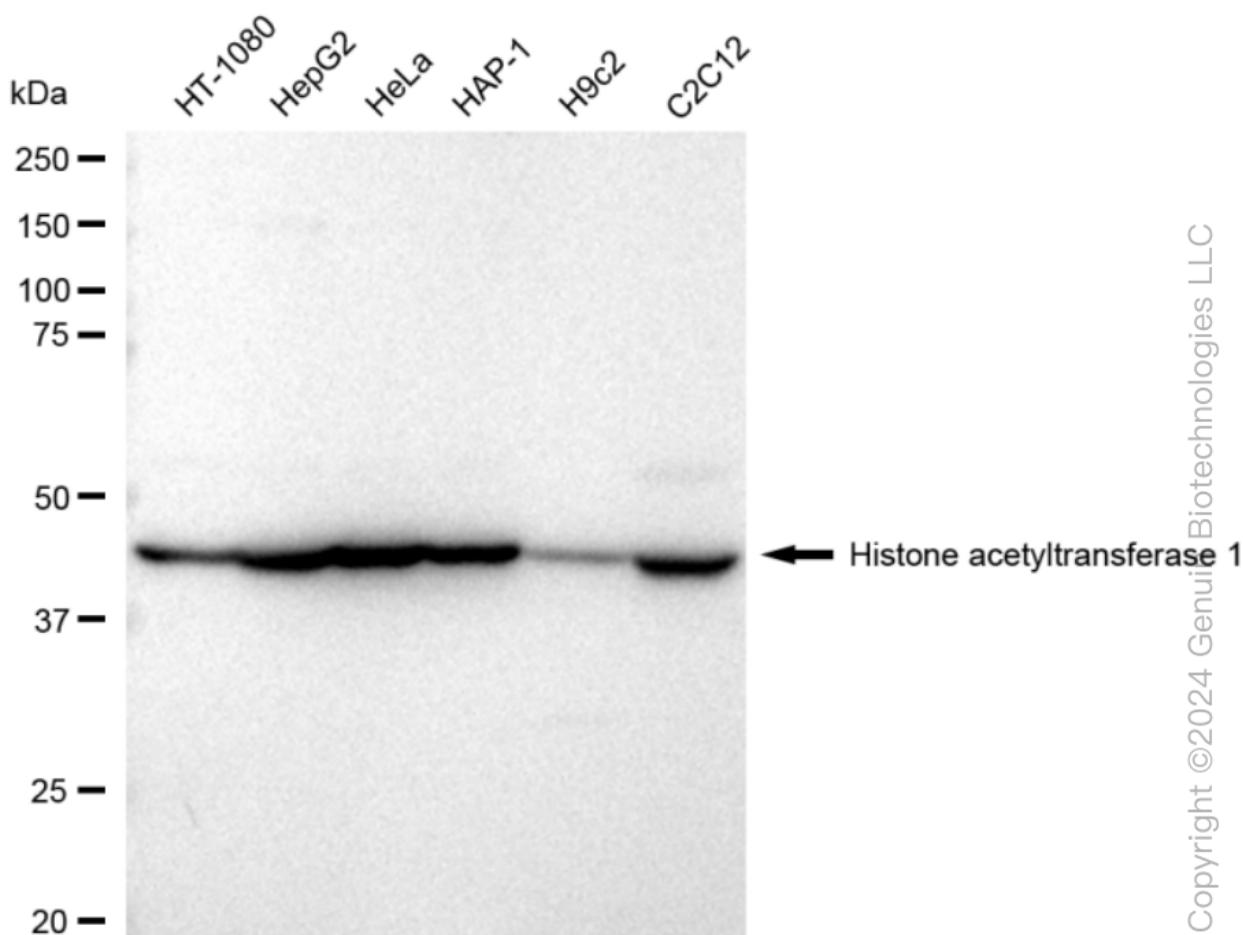
SALES@GENUINBIOTECH.COM
FAX: +1-540-855-7041

WWW.GENUINBIOTECH.COM

KD-Validated Anti-Histone acetyltransferase 1 Recombinant Rabbit Monoclonal Antibody

PAGE 3

1:1,000). Nuclei were stained blue with DAPI; Histone acetyltransferase 1 was stained magenta with Alexa Fluor® 647. Images were taken using Leica stellaris 5. Protein abundance based on laser Intensity and smart gain: Medium. Scale bar: 20 μ m.



Western blotting analysis using anti-Histone acetyltransferase 1 antibody (Cat#61169). Total cell lysates (30 μ g) from various cell lines were loaded and separated by SDS-PAGE. The blot was incubated with anti-Histone acetyltransferase 1 antibody (Cat#61169, 1:5,000) and HRP-conjugated goat anti-rabbit secondary antibody (Cat#201, 1:20,000) respectively. Image was developed using FeQ™ ECL Substrate Kit (Cat#226).

SUPPORT

SUPPORT@GENUINBIOTECH.COM
TEL: +1-540-855-7041

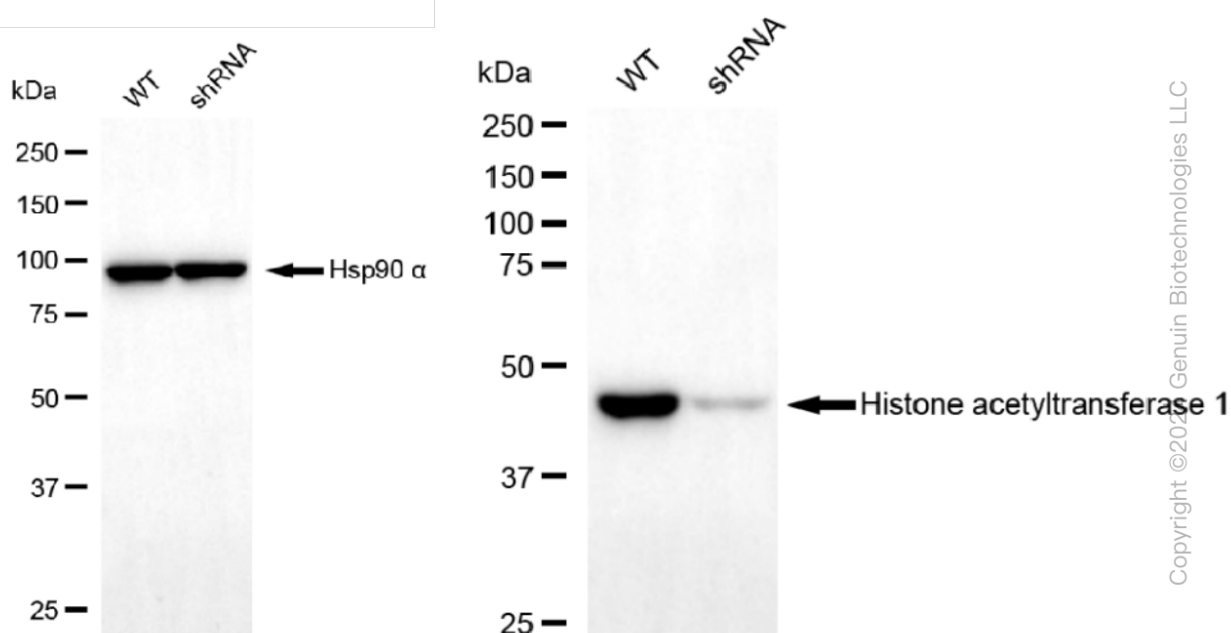
ORDERS

SALES@GENUINBIOTECH.COM
FAX: +1-540-855-7041

WWW.GENUINBIOTECH.COM

KD-Validated Anti-Histone acetyltransferase 1 Recombinant Rabbit Monoclonal Antibody

PAGE 4



Western blotting analysis using anti-Histone acetyltransferase 1 antibody (Cat#61169). Histone acetyltransferase 1 expression in wild type (WT) and histone acetyltransferase 1 shRNA knockdown (KD) HeLa cells with 30 μ g of total cell lysates. β -Tubulin serves as a loading control. The blot was incubated with anti-Histone acetyltransferase 1 antibody (Cat#61169, 1:5,000) and HRP-conjugated goat anti-rabbit secondary antibody (Cat#201, 1:20,000) respectively. Image was developed using FeQ™ ECL Substrate Kit (Cat#226).

SUPPORT

SUPPORT@GENUINBIOTECH.COM
TEL: +1-540-855-7041

ORDERS

SALES@GENUINBIOTECH.COM
FAX: +1-540-855-7041

WWW.GENUINBIOTECH.COM