

KD-Validated Anti-Prohibitin Recombinant Rabbit Monoclonal Antibody



Catalog #: 61170

Aliases

Prohibitin 1; PHB; Prohibitin; Epididymis Secretory Sperm Binding Protein Li 54e; Epididymis Luminal Protein 215; HEL-S-54e; HEL-215

Background

Gene Name: PHB1

NCBI Gene Entry: [5245](#)

UniProt Entry: [P35232](#)

Application Information

Molecular Weight: Predicted, 30 kDa, observed, 30 kDa

Clonality: Rabbit monoclonal antibody

Clone ID: 24GB6045

Species Reactivity: Human, mouse, rat

Applications Tested: Western blotting (WB), flow cytometry (FCM), immunocytochemistry (IC)

Immunogen

A synthesized peptide derived from human Prohibitin

Isotype

Rabbit IgG

Storage Buffer

Supplied in PBS (pH 7.4) containing 50% glycerol, and 0.02% sodium azide.

Storage

Store at -20 °C for one year.

Recommended Dilutions

Western Blotting (WB): 1:1,000-1:5,000

Immunocytochemistry (IC): 1:100-1:1,000

Flow Cytometry (FCM): 1:2,000

Note: This product is for research use only.

Validation Data

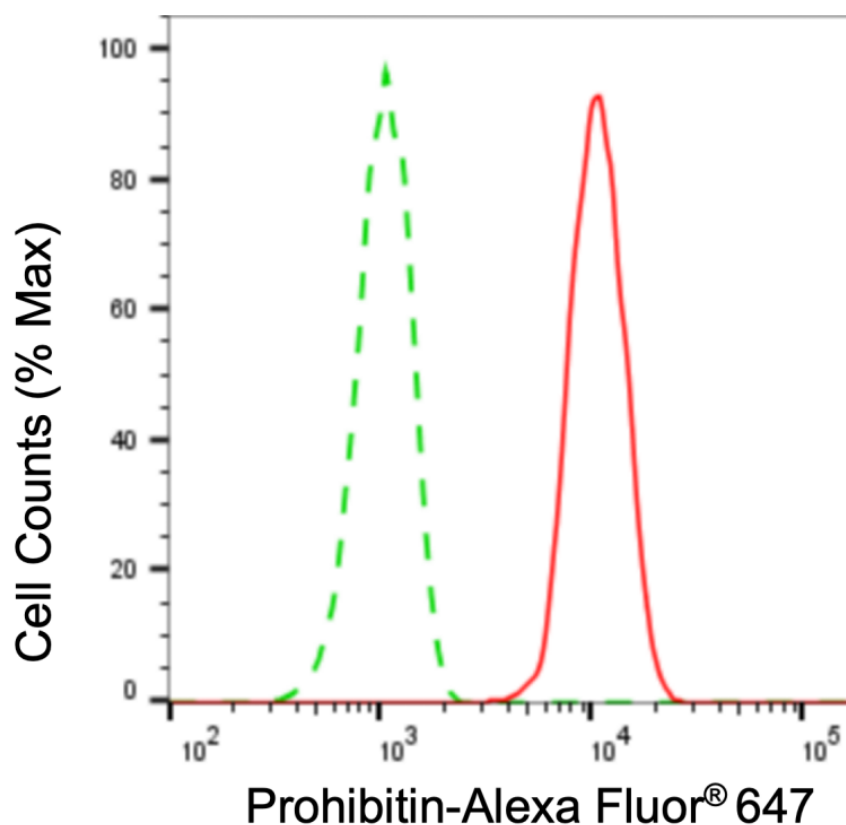
SUPPORT

SUPPORT@GENUINBIOTECH.COM
TEL: +1-540-855-7041

ORDERS

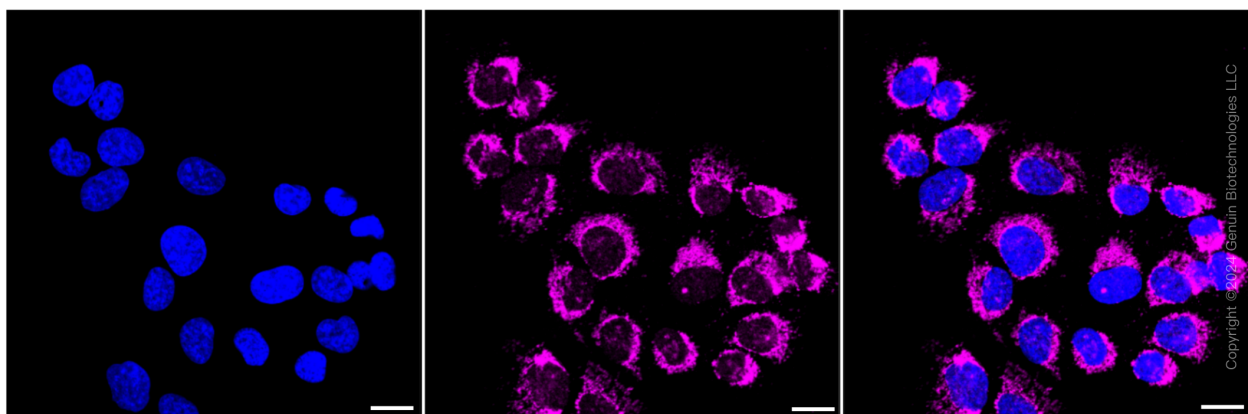
SALES@GENUINBIOTECH.COM
FAX: +1-540-855-7041

WWW.GENUINBIOTECH.COM

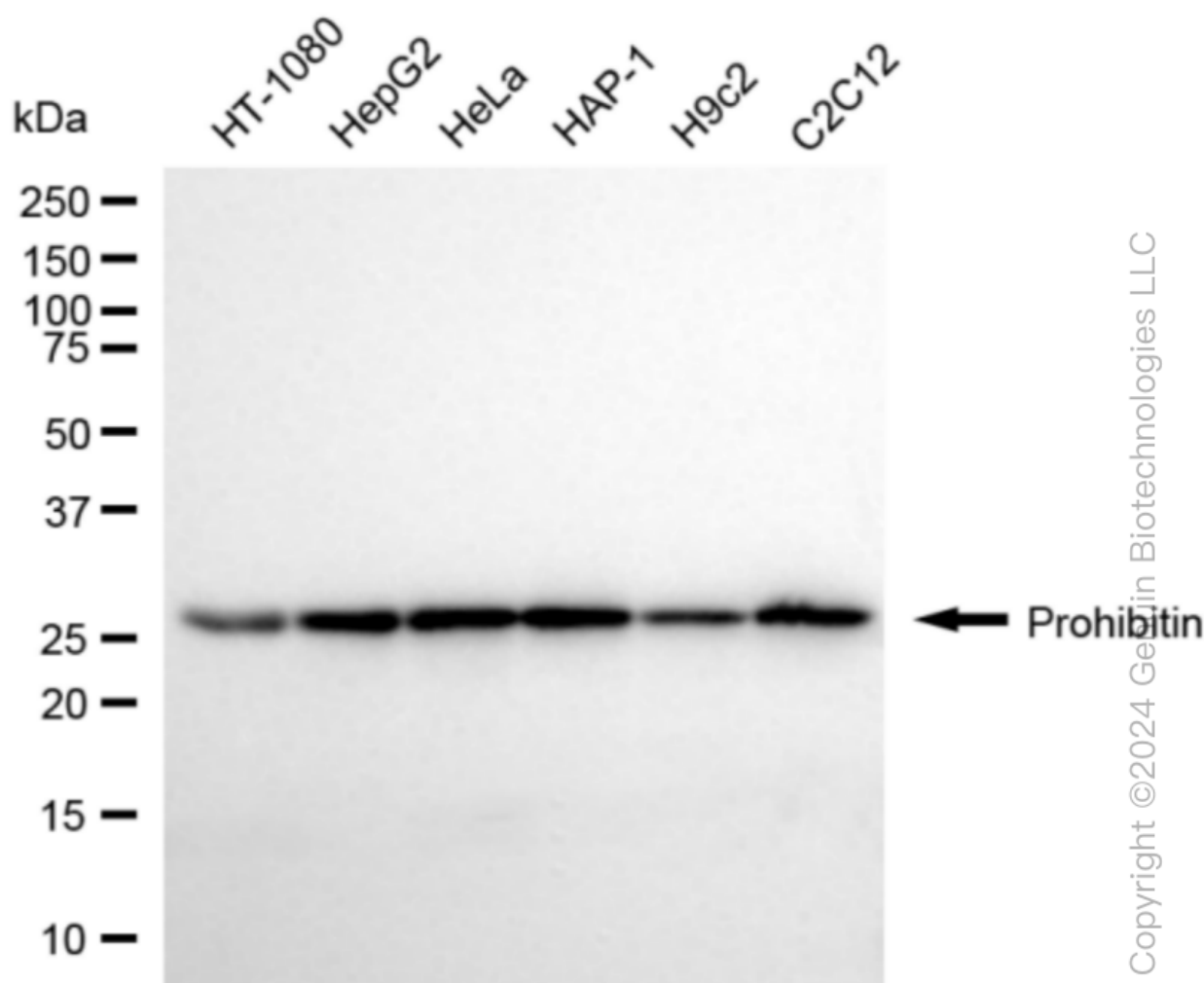


Copyright ©2024 Genuin Biotechnologies LLC

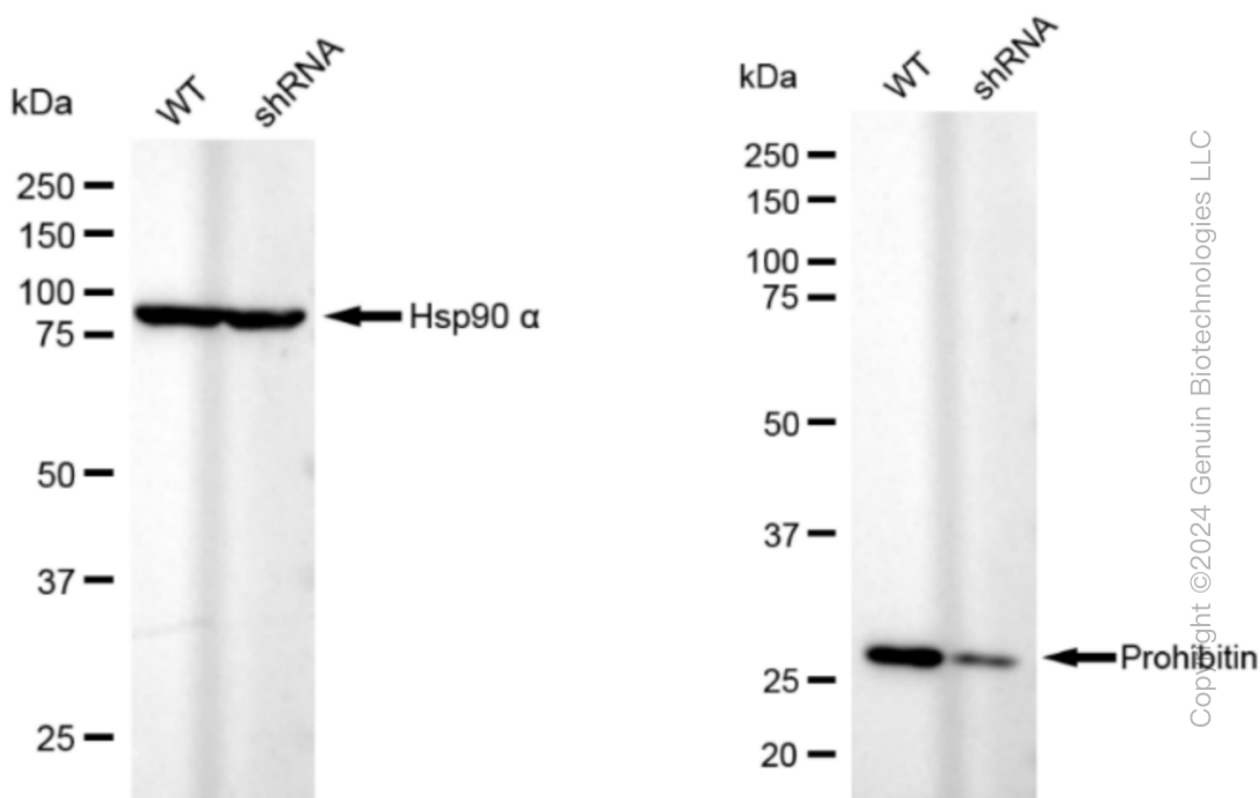
Flow cytometric analysis of prohibitin expression in HT-1080 cells using prohibitin antibody (Cat#61170, 1:2,000). Green, isotype control; red, prohibitin.



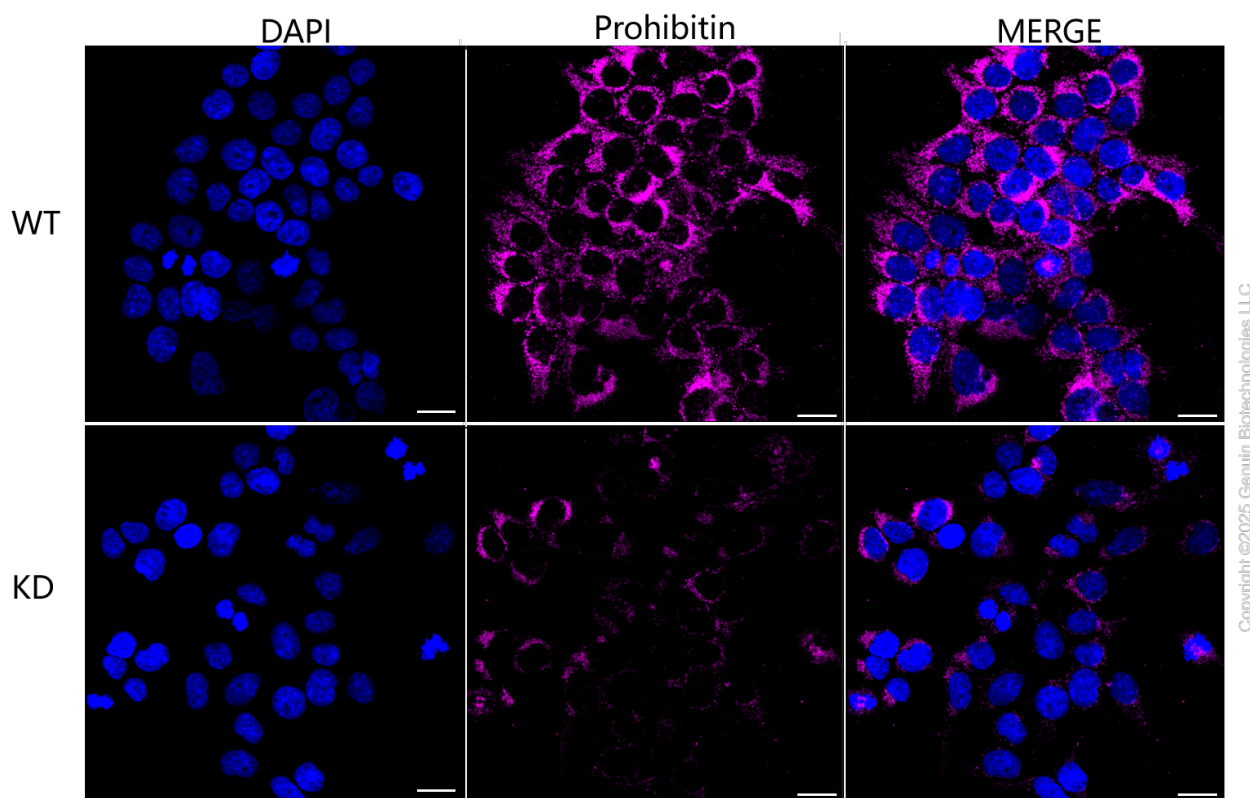
Immunocytochemical staining of HT-1080 cells with prohibitin antibody (Cat#61170, 1:1,000). Nuclei were stained blue with DAPI; Prohibitin was stained magenta with Alexa Fluor® 647. Images were taken using Leica stellaris 5. Protein abundance based on laser Intensity and smart gain: Medium. Scale bar: 20 µm.



Western blotting analysis using anti-prohibitin antibody (Cat#61170). Total cell lysates (30 µg) from various cell lines were loaded and separated by SDS-PAGE. The blot was incubated with anti-prohibitin antibody (Cat#61170, 1:5,000) and HRP-conjugated goat anti-rabbit secondary antibody (Cat#201, 1:20,000) respectively. Image was developed using FeQ™ ECL Substrate Kit (Cat#226).



Western blotting analysis using anti-prohibitin antibody (Cat#61170). Prohibitin expression in wild type (WT) and prohibitin (PHB1) shRNA knockdown (KD) HeLa cells with 20 µg of total cell lysates. β-Tubulin serves as a loading control. The blot was incubated with anti-prohibitin antibody (Cat#61170, 1:5,000) and HRP-conjugated goat anti-rabbit secondary antibody (Cat#201, 1:20,000) respectively. Image was developed using NaQ™ ECL Substrate Kit (Cat#716).



Immunocytochemical staining of HeLa cells using anti-Prohibitin antibody (Cat#61170, 1:1,000), Top panel: wild-type (WT); Bottom panel: Prohibitin shRNA knockdown (KD). Nuclei were stained blue with DAPI; Prohibitin was stained magenta with Alexa Fluor® 647. Scale bar, 20 μ m. Permeabilization: Triton.