

# KD-Validated Anti-Histone deacetylase 10 Recombinant Rabbit Monoclonal Antibody



**Catalog #: 61171**

## Aliases

HDAC10; Histone Deacetylase 10; Polyamine Deacetylase HDAC10; DKFZP761B039; HD10; EC 3.5.1.; EC 3.5.1.

## Background

Gene Name: HDAC10

NCBI Gene Entry: [83933](#)

UniProt Entry: [Q969S8](#)

## Application Information

Molecular Weight: Predicted, 71 kDa; observed, 75 kDa

Clonality: Rabbit monoclonal antibody

Clone ID: 24GB6050

Species Reactivity: Human, mouse, rat

Applications Tested: Western blotting (WB), flow cytometry (FCM), immunocytochemistry (IC)

## Immunogen

A synthesized peptide derived from human HDAC10

## Isotype

Rabbit IgG

## Storage Buffer

Supplied in PBS (pH 7.4) containing 50% glycerol, and 0.02% sodium azide.

## Storage

Store at -20 °C for one year.

## Recommended Dilutions

Western Blotting (WB): 1:1,000-1:5,000

Flow Cytometry (FCM): 1:2,000

Immunocytochemistry (IC): 1:1,000

**Note:** This product is for research use only.

## Validation Data

---

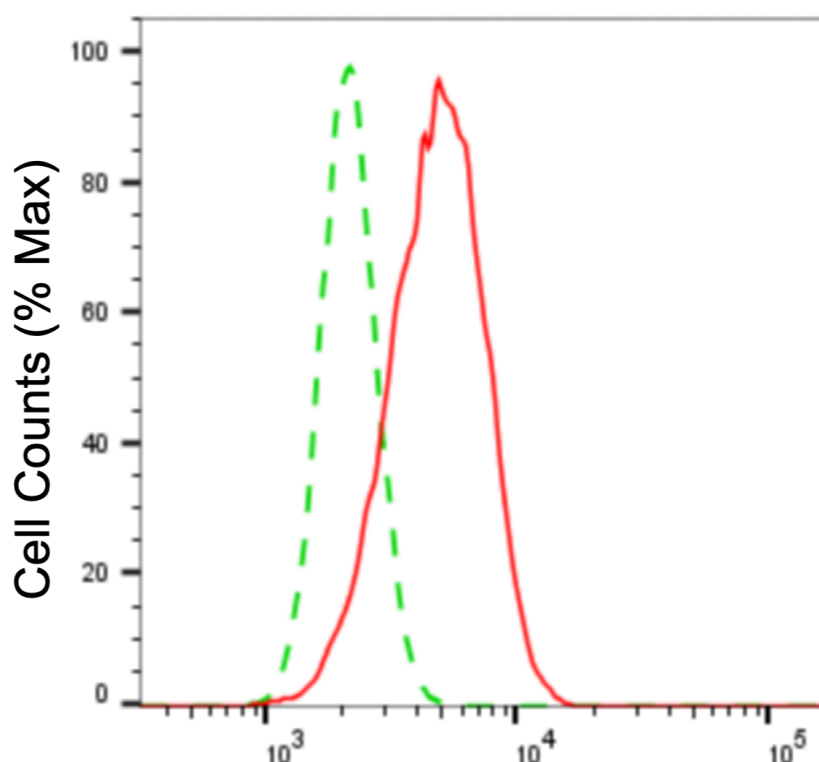
### SUPPORT

SUPPORT@GENUINBIOTECH.COM  
TEL: +1-540-855-7041

### ORDERS

SALES@GENUINBIOTECH.COM  
FAX: +1-540-855-7041

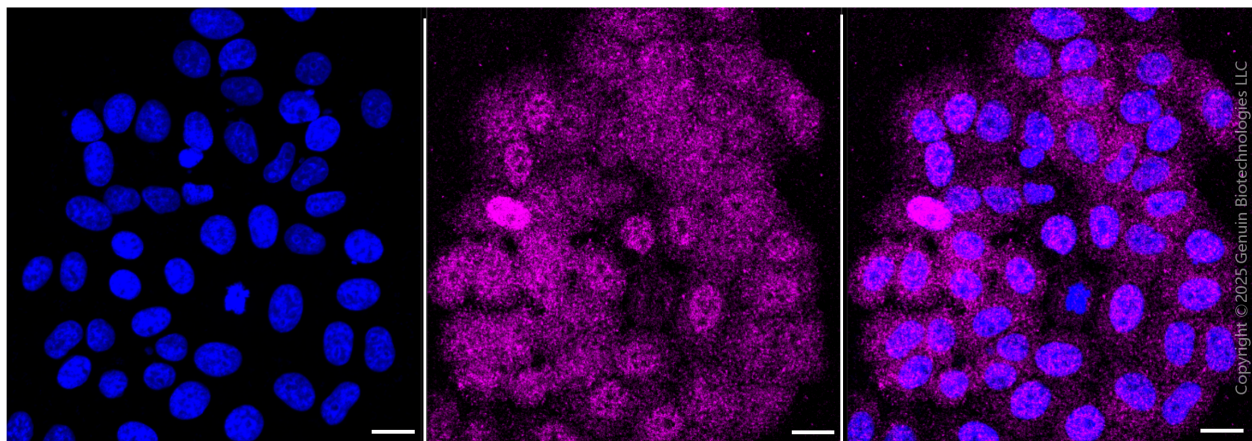
[WWW.GENUINBIOTECH.COM](http://WWW.GENUINBIOTECH.COM)



Copyright © 2025 Genuin Biotechnologies LLC

### Histone deacetylase 10-Alexa Fluor® 647

Flow cytometric analysis of histone deacetylase 10 expression in HepG2 cells using histone deacetylase 10 antibody (Cat#61171, 1:2,000). Green, isotype control; red, histone deacetylase 10.

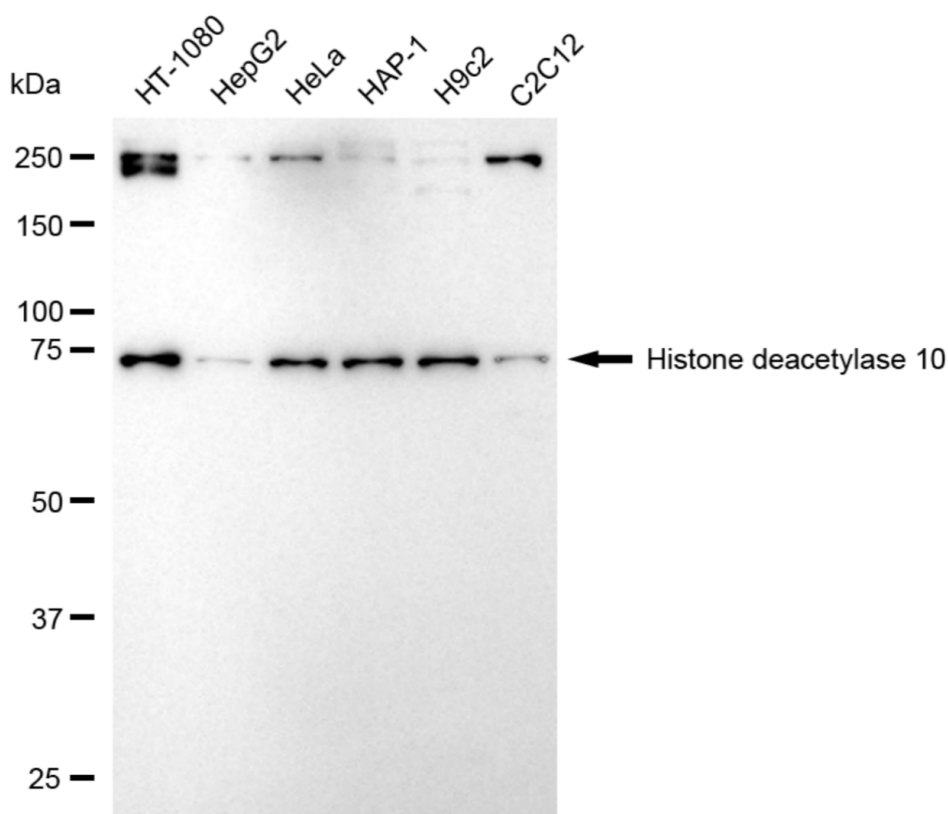


Copyright © 2025 Genuin Biotechnologies LLC

Immunocytochemical staining of HepG2 cells with anti-histone deacetylase 10 antibody (Cat#61171, 1:1,000). Nuclei were stained blue with DAPI; Histone deacetylase 10 was stained magenta with Alexa Fluor® 647. Images were taken using Leica stellaris 5. Protein abundance based on laser Intensity and smart gain: Medium. Scale bar: 20  $\mu$ m.

## KD-Validated Anti-Histone deacetylase 10 Recombinant Rabbit Monoclonal Antibody

PAGE 3



Copyright ©2025 Genuin Biotechnologies LLC

Western blotting analysis using anti-histone deacetylase 10 antibody (Cat#61171). Total cell lysates (30 µg) from various cell lines were loaded and separated by SDS-PAGE. The blot was incubated with anti-histone deacetylase 10 antibody (Cat#61171, 1:5,000) and HRP-conjugated goat anti-rabbit secondary antibody (Cat#201, 1:20,000) respectively. Image was developed using FeQ™ ECL Substrate Kit (Cat#226).

### SUPPORT

SUPPORT@GENUINBIOTECH.COM  
TEL: +1-540-855-7041

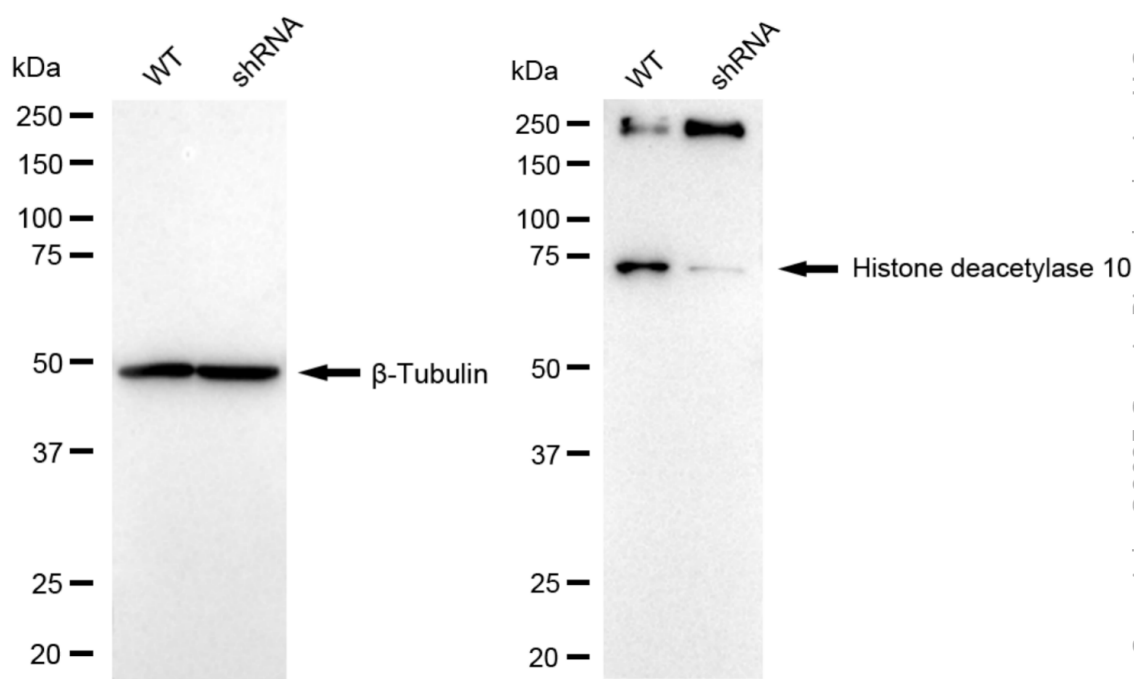
### ORDERS

SALES@GENUINBIOTECH.COM  
FAX: +1-540-855-7041

WWW.GENUINBIOTECH.COM

## KD-Validated Anti-Histone deacetylase 10 Recombinant Rabbit Monoclonal Antibody

PAGE 4



Western blotting analysis using anti-histone deacetylase 10 antibody (Cat#61171). Histone deacetylase 10 expression in wild-type (WT) and histone deacetylase 10 (HDAC10) shRNA knockdown (KD) HT-1080 cells with 20  $\mu$ g of total cell lysates.  $\beta$ -Tubulin serves as a loading control. The blot was incubated with anti-histone deacetylase 10 antibody (Cat#61171, 1:5,000) and HRP-conjugated goat anti-rabbit secondary antibody (Cat#201, 1:20,000) respectively. Image was developed using NaQ<sup>TM</sup> ECL Substrate Kit (Cat#716).

### SUPPORT

SUPPORT@GENUINBIOTECH.COM  
TEL: +1-540-855-7041

### ORDERS

SALES@GENUINBIOTECH.COM  
FAX: +1-540-855-7041

[WWW.GENUINBIOTECH.COM](http://WWW.GENUINBIOTECH.COM)