

KD-Validated Anti-JUP Recombinant Rabbit Monoclonal Antibody



Catalog #: 61172

Aliases

JUP; Junction Plakoglobin; DP3; DPM3; CTNNG; PDGB; PKGB; PG; Catenin (Cadherin-Associated Protein), Gamma 80kDa; Desmosomal Protein 3; Desmoplakin III; Desmoplakin-3; Catenin Gamma

Background

Gene Name: JUP

NCBI Gene Entry: [3728](#)

UniProt Entry: [P14923](#)

Application Information

Molecular Weight: Predicted, 82 kDa, observed, 75 kDa

Clonality: Rabbit monoclonal antibody

Clone ID: 24GB6055

Species Reactivity: Human, mouse

Applications Tested: Western blotting (WB), flow cytometry (FCM), immunocytochemistry (IC)

Immunogen

A synthesized peptide derived from human Catenin gamma

Isotype

Rabbit IgG

Storage Buffer

Supplied in PBS (pH 7.4) containing 50% glycerol, and 0.02% sodium azide.

Storage

Store at -20 °C for one year.

Recommended Dilutions

Western Blotting (WB): 1:1,000-1:5,000

Flow Cytometry (FCM): 1:2,000

Immunocytochemistry (IC): 1:100-1:1,000

Note: This product is for research use only.

SUPPORT

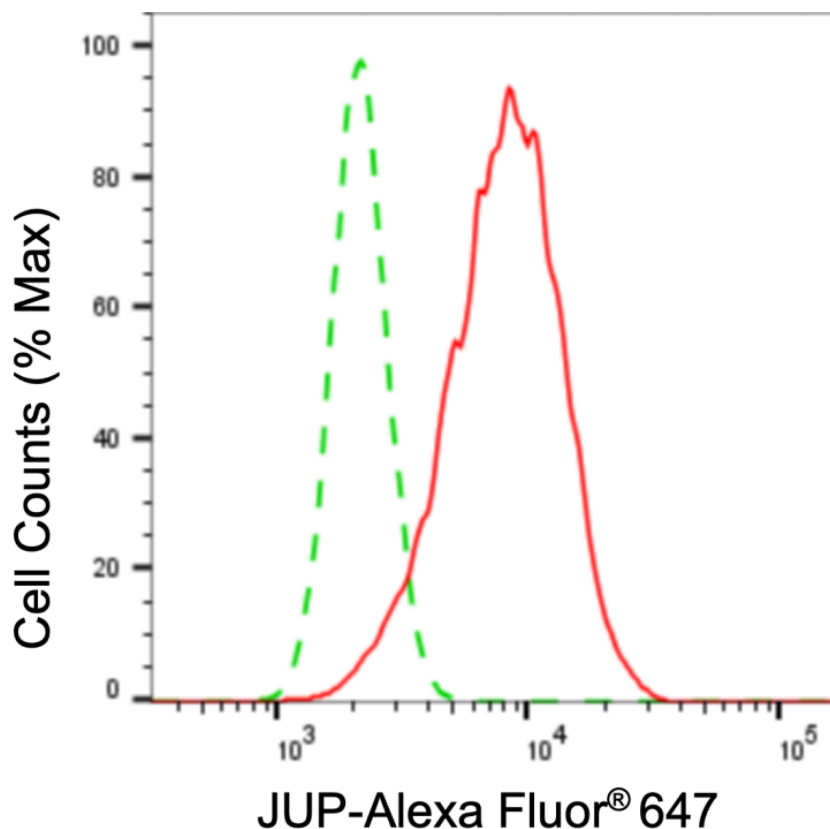
SUPPORT@GENUINBIOTECH.COM
TEL: +1-540-855-7041

ORDERS

SALES@GENUINBIOTECH.COM
FAX: +1-540-855-7041

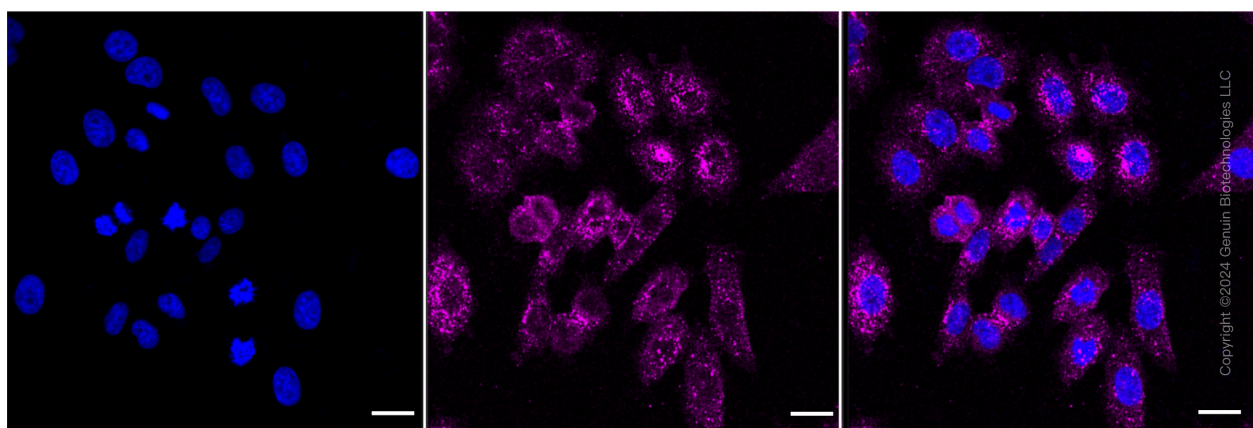
WWW.GENUINBIOTECH.COM

Validation Data



Copyright ©2024 Genuin Biotechnologies LLC

Flow cytometric analysis of JUP expression in HepG2 cells using JUP antibody (Cat#61172, 1:2,000). Green, isotype control; red, JUP.



Copyright ©2024 Genuin Biotechnologies LLC

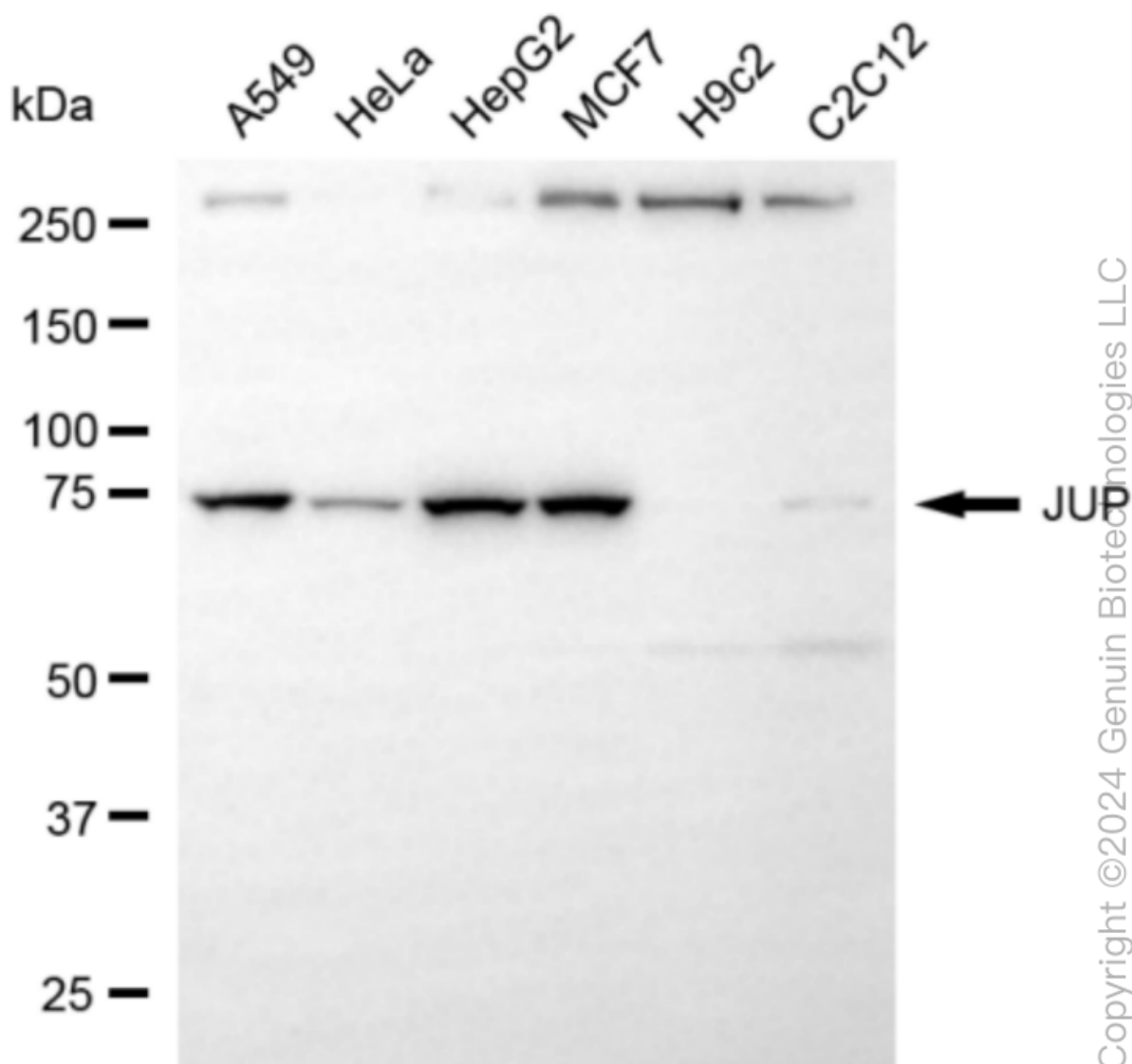
SUPPORT

SUPPORT@GENUINBIOTECH.COM
TEL: +1-540-855-7041

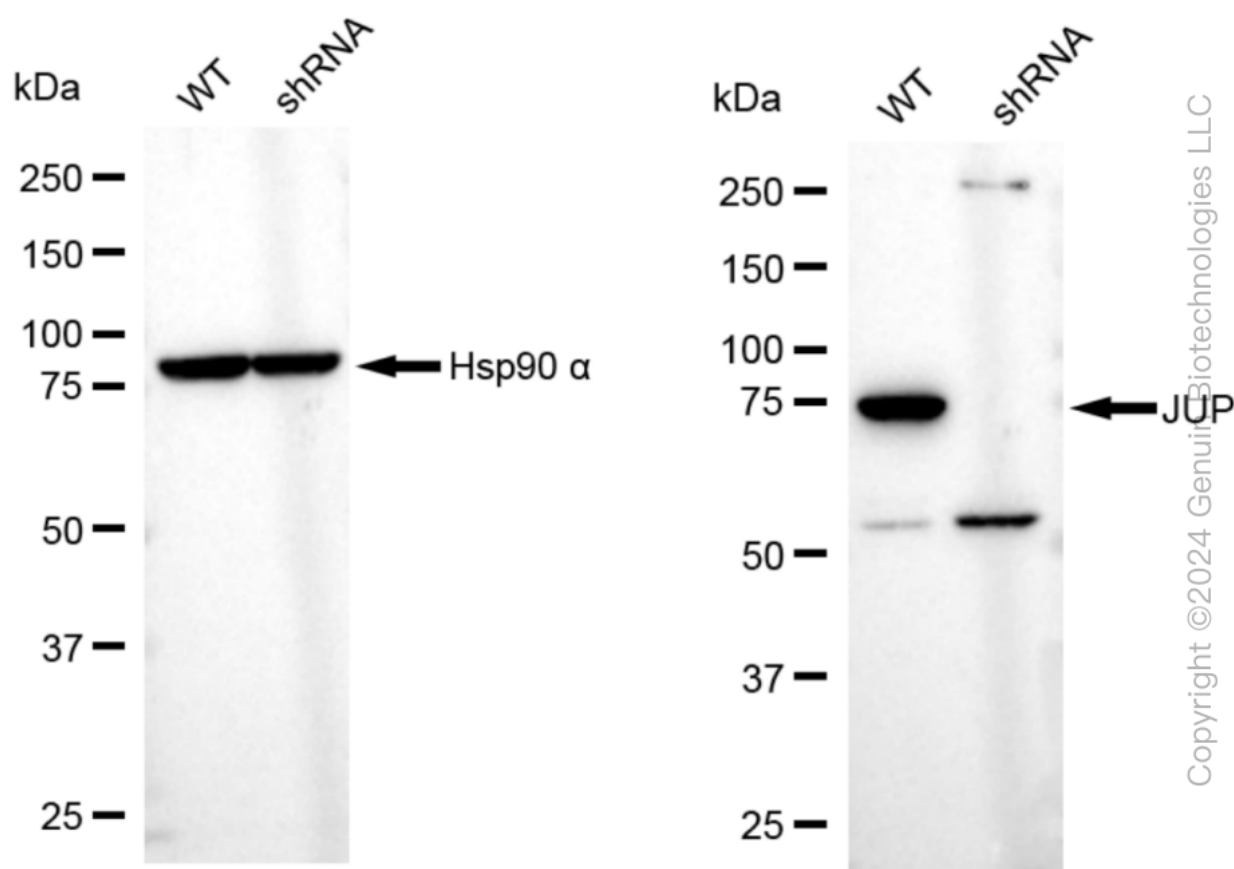
ORDERS

SALES@GENUINBIOTECH.COM
FAX: +1-540-855-7041

WWW.GENUINBIOTECH.COM



Western blotting analysis using anti-JUP antibody (Cat#61172). Total cell lysates (30 µg) from various cell lines were loaded and separated by SDS-PAGE. The blot was incubated with anti-JUP antibody (Cat#61172, 1:5,000) and HRP-conjugated goat anti-rabbit secondary antibody (Cat#201, 1:20,000) respectively. Image was developed using NaQ™ ECL Substrate Kit (Cat#716).



Western blotting analysis using anti-JUP antibody (Cat#61172). JUP expression in wild type (WT) and JUP shRNA knockdown (KD) HeLa cells with 20 μ g of total cell lysates. β -Tubulin serves as a loading control. The blot was incubated with anti-JUP antibody (Cat#61172, 1:5,000) and HRP-conjugated goat anti-rabbit secondary antibody (Cat#201, 1:20,000) respectively. Image was developed using NaQ™ ECL Substrate Kit (Cat#716).