

KD-Validated Anti-Tax1 binding protein 1 Recombinant Rabbit Monoclonal Antibody



Catalog #: 61175

Aliases

TAX1BP1; Tax1 Binding Protein 1; CALCOCO3; TXBP151; Tax1 (Human T-Cell Leukemia Virus Type I) Binding Protein 1; Tax1-Binding Protein 1; TRAF6-Binding Protein; T6BP

Background

Gene Name: TAX1BP1

NCBI Gene Entry: [8887](#)

UniProt Entry: [Q86VP1](#)

Application Information

Molecular Weight: Predicted, 91 kDa, observed, 91 kDa

Clonality: Rabbit monoclonal antibody

Clone ID: 23GB2100

Species Reactivity: Human, mouse, rat

Applications Tested: Western blotting (WB), flow cytometry (FCM), immunocytochemistry (IC)

Immunogen

A synthesized peptide derived from human TRAF6BP

Isotype

Rabbit IgG

Storage Buffer

Supplied in PBS (pH 7.4) containing 50% glycerol, and 0.02% sodium azide.

Storage

Store at -20 °C for one year.

Recommended Dilutions

Western Blotting (WB): 1:1,000-1:5,000

Flow Cytometry (FCM): 1:2,000

Immunocytochemistry (IC): 1:100-1:1,000

Note: This product is for research use only.

Validation Data

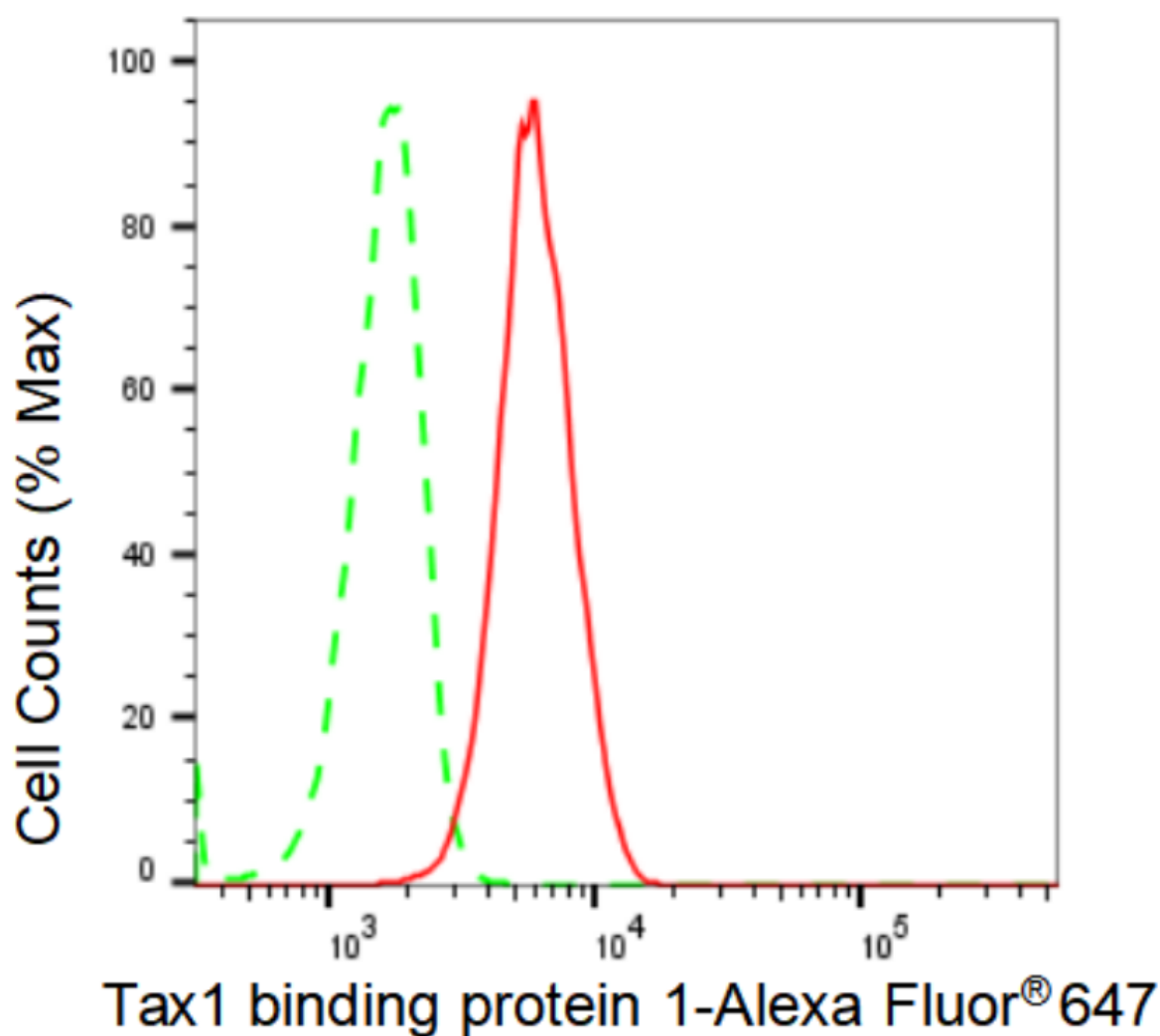
SUPPORT

SUPPORT@GENUINBIOTECH.COM
TEL: +1-540-855-7041

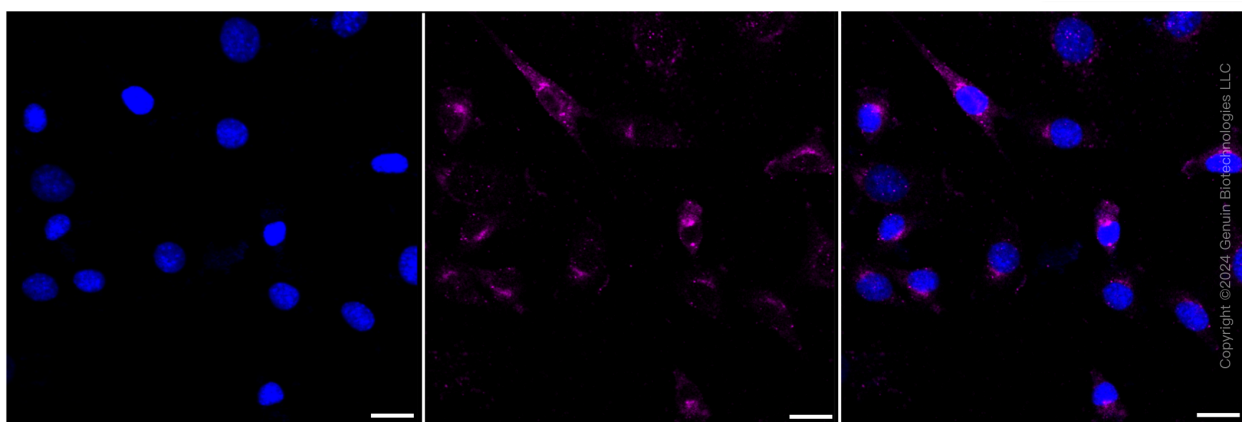
ORDERS

SALES@GENUINBIOTECH.COM
FAX: +1-540-855-7041

WWW.GENUINBIOTECH.COM



Flow cytometric analysis of Tax1 binding protein 1 expression in C2C12 cells using Tax1 binding protein 1 antibody (Cat#61175, 1:2,000). Green, isotype control; red, Tax1 binding protein 1.

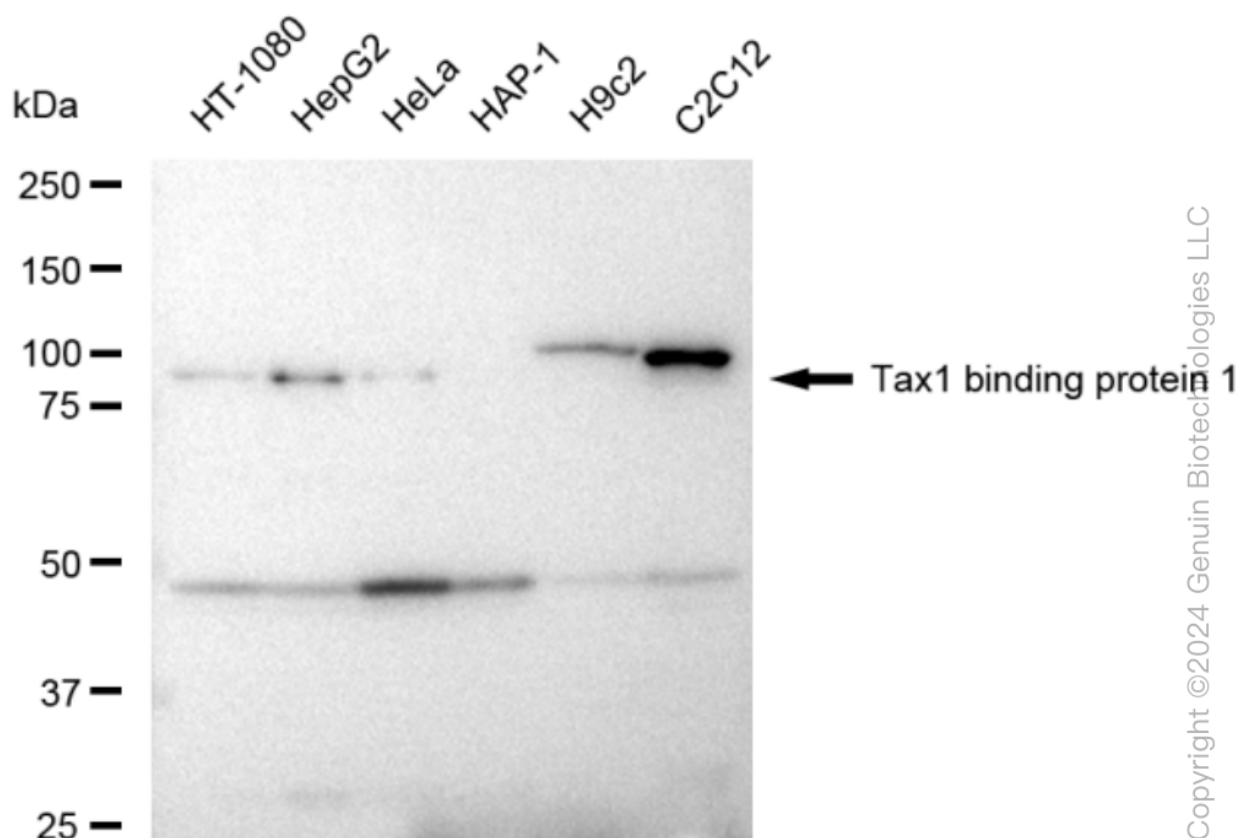


Immunocytochemical staining of C2C12 cells with Tax1 binding protein 1 antibody (Cat#61175, 1:1,000). Nuclei were stained blue with DAPI; Tax1 binding protein 1 was stained magenta with

KD-Validated Anti-Tax1 binding protein 1 Recombinant Rabbit Monoclonal Antibody

PAGE 3

Alexa Fluor® 647. Images were taken using Leica stellaris 5. Protein abundance based on laser Intensity and smart gain: Medium. Scale bar: 20 μ m.



Western blotting analysis using anti-Tax1 binding protein 1 antibody (Cat#61175). Total cell lysates (30 μ g) from various cell lines were loaded and separated by SDS-PAGE. The blot was incubated with anti-Tax1 binding protein 1 antibody (Cat#61175, 1:5,000) and HRP-conjugated goat anti-rabbit secondary antibody (Cat#201, 1:20,000) respectively. Image was developed using FeQ™ ECL Substrate Kit (Cat#226).

SUPPORT

SUPPORT@GENUINBIOTECH.COM
TEL: +1-540-855-7041

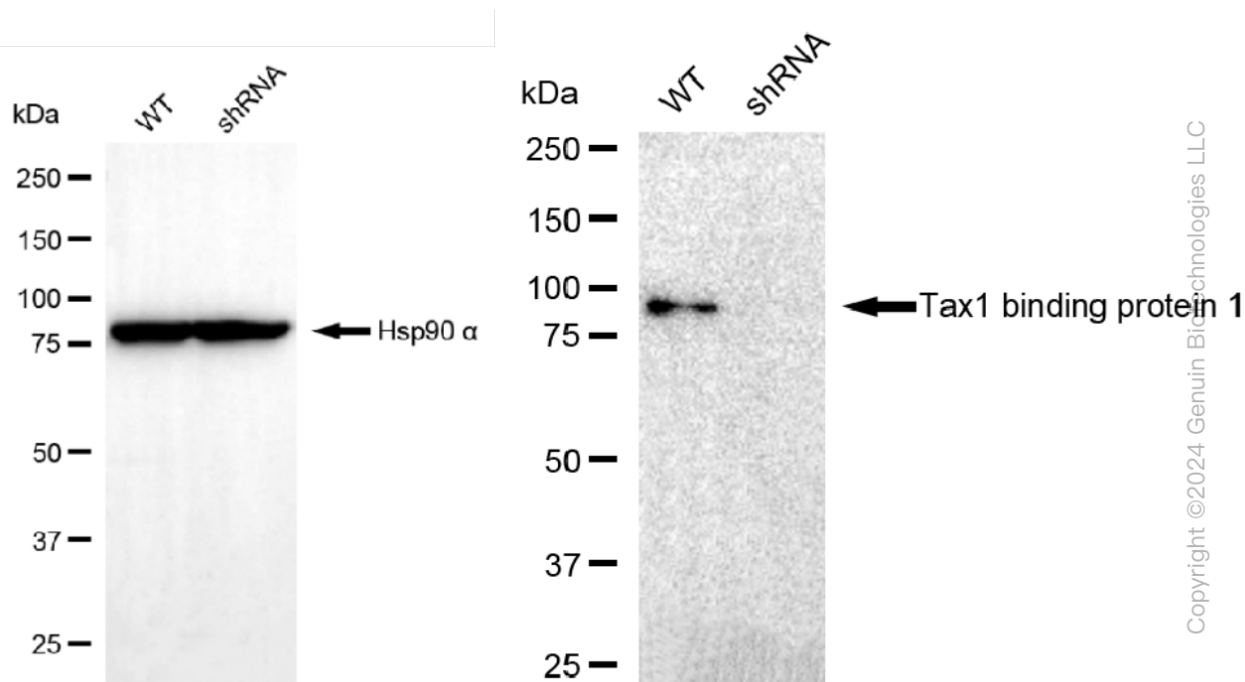
ORDERS

SALES@GENUINBIOTECH.COM
FAX: +1-540-855-7041

WWW.GENUINBIOTECH.COM

KD-Validated Anti-Tax1 binding protein 1 Recombinant Rabbit Monoclonal Antibody

PAGE 4



Western blotting analysis using anti-Tax1 binding protein 1 antibody (Cat#61175). Tax1 binding protein 1 expression in wild type (WT) and tax1 binding protein 1 shRNA knockdown (KD) HeLa cells with 30 μ g of total cell lysates. β -Tubulin serves as a loading control. The blot was incubated with anti-Tax1 binding protein 1 antibody (Cat#61175, 1:5,000) and HRP-conjugated goat anti-rabbit secondary antibody (Cat#201, 1:20,000) respectively. Image was developed using FeQ™ ECL Substrate Kit (Cat#226).

SUPPORT

SUPPORT@GENUINBIOTECH.COM
TEL: +1-540-855-7041

ORDERS

SALES@GENUINBIOTECH.COM
FAX: +1-540-855-7041

WWW.GENUINBIOTECH.COM