

# KD-Validated Anti-Crystallin alpha B Recombinant Rabbit Monoclonal Antibody



**Catalog #: 61176**

## Aliases

CRYAB; Crystallin Alpha B; HSPB5; CRYA2; Renal Carcinoma Antigen NY-REN-27; Heat Shock Protein Beta-5; Rosenthal Fiber Component; Alpha-Crystallin B Chain; Epididymis Secretory Protein Li 101; Heat-Shock 20 KD Like-Protein; Crystallin, Alpha B; Alpha(B)-Crystallin; HEL-S-101; CTRCT16; CMD1II; CTPP2; HspB5; MFM2

## Background

Gene Name: CRYAB

NCBI Gene Entry: [1410](#)

UniProt Entry: [P02511](#)

## Application Information

Molecular Weight: Predicted, 20 kDa, observed, 18 kDa

Clonality: Rabbit monoclonal antibody

Clone ID: 24GB6070

Species Reactivity: Rat

Applications Tested: Western blotting (WB), flow cytometry (FCM), immunocytochemistry (IC)

## Immunogen

A synthesized peptide derived from human CRYAB

## Isotype

Rabbit IgG

## Storage Buffer

Supplied in PBS (pH 7.4) containing 50% glycerol, and 0.02% sodium azide.

## Storage

Store at -20 °C for one year.

## Recommended Dilutions

Western Blotting (WB): 1:1,000-1:5,000

Immunocytochemistry (IC): 1:100-1:1,000

Flow Cytometry (FCM): 1:2,000

---

### SUPPORT

SUPPORT@GENUINBIOTECH.COM  
TEL: +1-540-855-7041

### ORDERS

SALES@GENUINBIOTECH.COM  
FAX: +1-540-855-7041

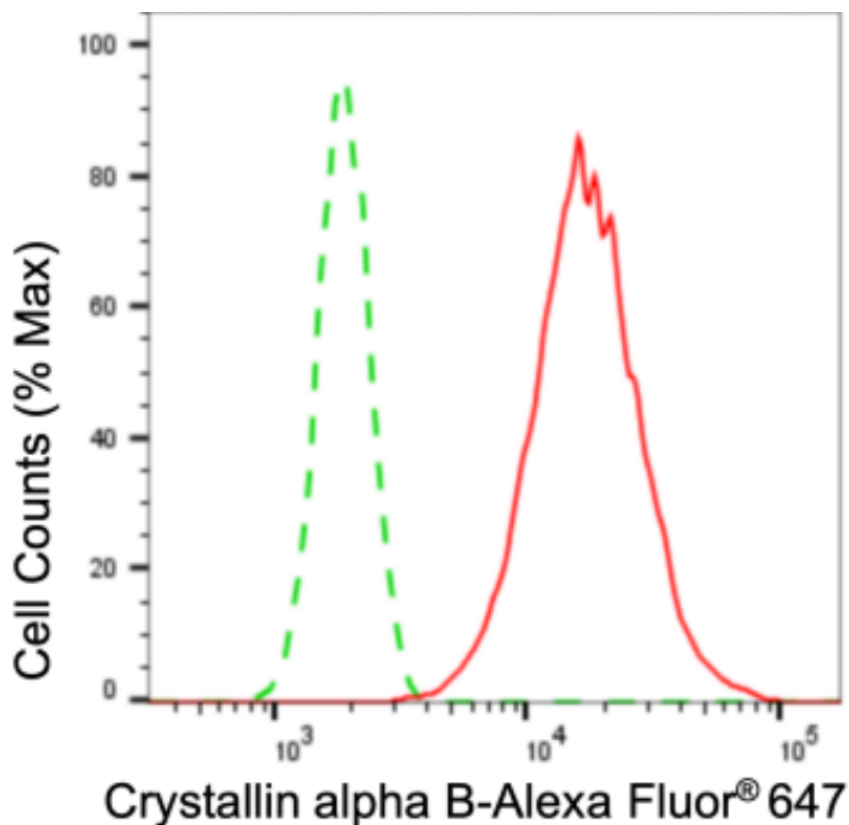
[WWW.GENUINBIOTECH.COM](http://WWW.GENUINBIOTECH.COM)

# KD-Validated Anti-Crystallin alpha B Recombinant Rabbit Monoclonal Antibody

PAGE 2

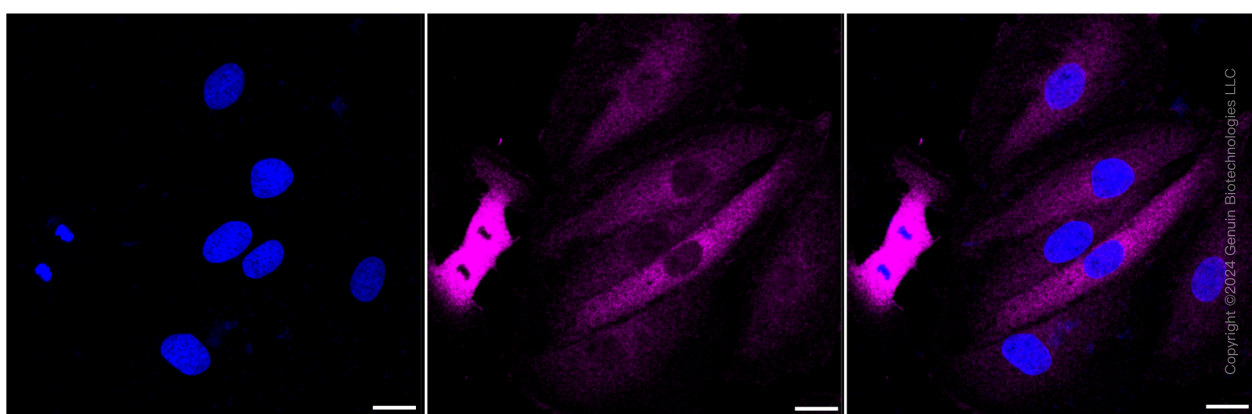
**Note:** This product is for research use only.

## Validation Data



Copyright ©2024 Genuin Biotechnologies LLC

Flow cytometric analysis of Crystallin alpha B expression in H9c2 cells using crystallin alpha B antibody (Cat#61176, 1:2,000). Green, isotype control; red, crystallin alpha B.



Copyright ©2024 Genuin Biotechnologies LLC

### SUPPORT

SUPPORT@GENUINBIOTECH.COM  
TEL: +1-540-855-7041

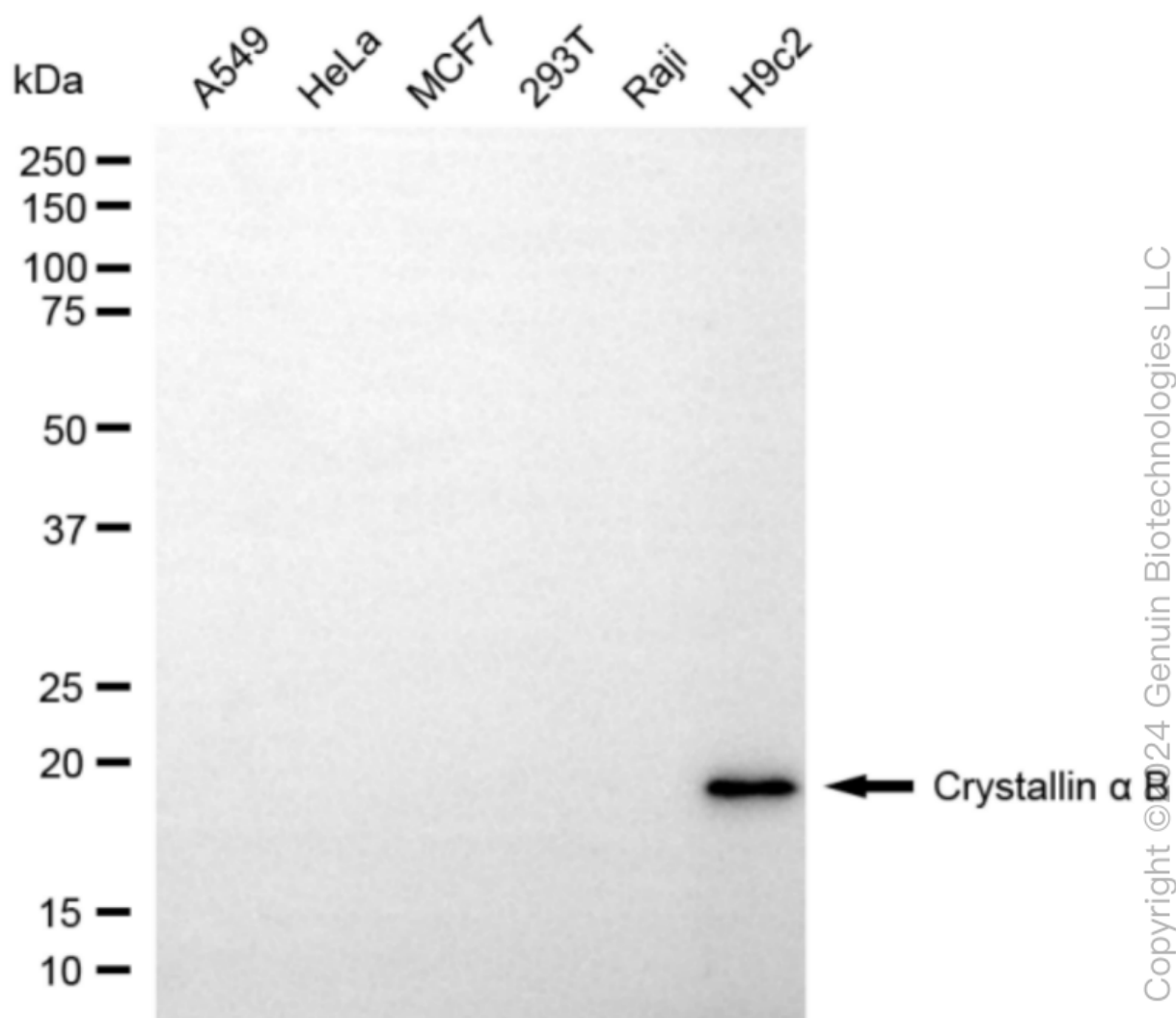
### ORDERS

SALES@GENUINBIOTECH.COM  
FAX: +1-540-855-7041

WWW.GENUINBIOTECH.COM

## KD-Validated Anti-Crystallin alpha B Recombinant Rabbit Monoclonal Antibody

PAGE 3



Western blotting analysis using anti-crystallin alpha B antibody (Cat#61176). Total cell lysates (30 µg) from various cell lines were loaded and separated by SDS-PAGE. The blot was incubated with anti-crystallin alpha B antibody (Cat#61176, 1:5,000) and HRP-conjugated goat anti-rabbit secondary antibody (Cat#201, 1:20,000) respectively. Image was developed using NaQ™ ECL Substrate Kit (Cat#716).

### SUPPORT

SUPPORT@GENUINBIOTECH.COM  
TEL: +1-540-855-7041

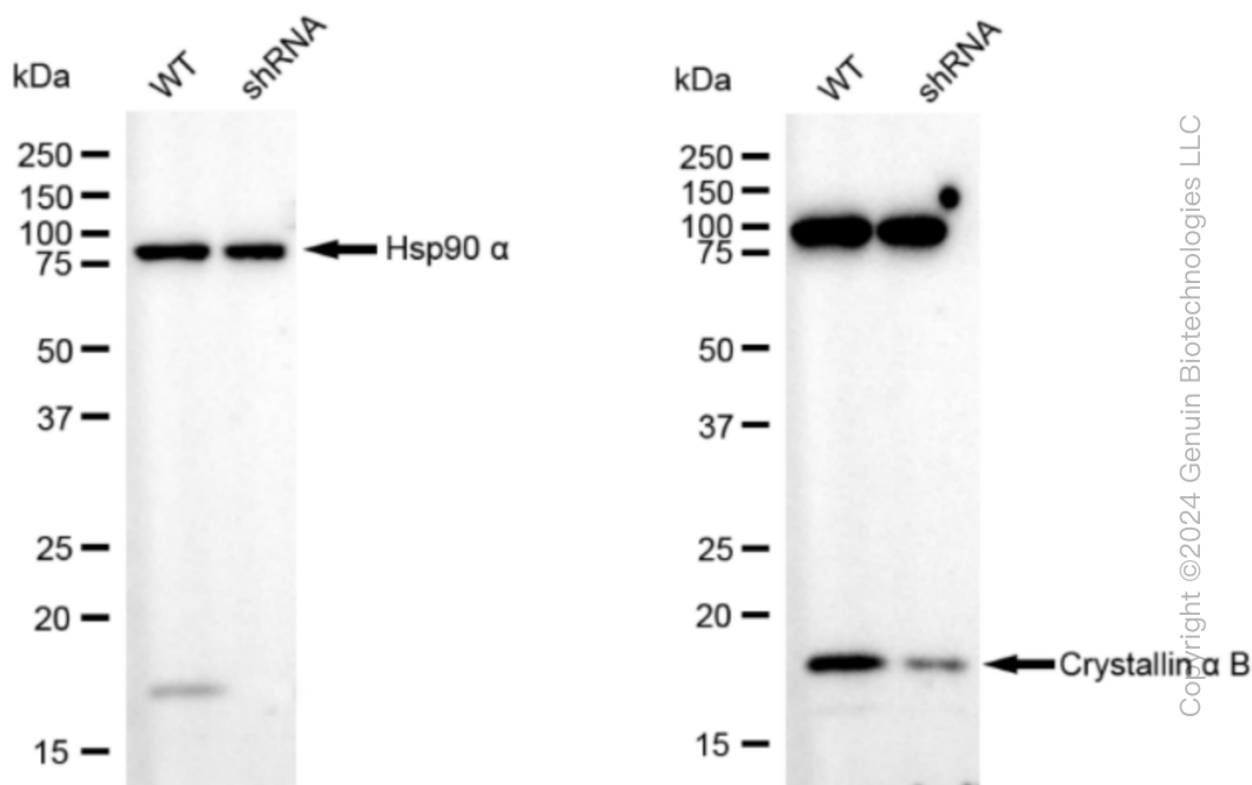
### ORDERS

SALES@GENUINBIOTECH.COM  
FAX: +1-540-855-7041

[WWW.GENUINBIOTECH.COM](http://WWW.GENUINBIOTECH.COM)

## KD-Validated Anti-Crystallin $\alpha$ B Recombinant Rabbit Monoclonal Antibody

PAGE 4



Western blotting analysis using anti-crystallin  $\alpha$  B antibody (Cat#61176). Crystallin  $\alpha$  B expression in wild type (WT) and crystallin  $\alpha$  B (CRYAB) shRNA knockdown (KD) H9c2 cells with 20  $\mu$ g of total cell lysates.  $\beta$ -Tubulin serves as a loading control. The blot was incubated with anti-crystallin  $\alpha$  B antibody (Cat#61176, 1:5,000) and HRP-conjugated goat anti-rabbit secondary antibody (Cat#201, 1:20,000) respectively. Image was developed using NaQ<sup>TM</sup> ECL Substrate Kit (Cat#716).

### SUPPORT

SUPPORT@GENUINBIOTECH.COM  
TEL: +1-540-855-7041

### ORDERS

SALES@GENUINBIOTECH.COM  
FAX: +1-540-855-7041

WWW.GENUINBIOTECH.COM