

KD-Validated Anti-IFIH1 Recombinant Rabbit Monoclonal Antibody



Catalog #: 61179

Aliases

IFIH1; Interferon Induced With Helicase C Domain 1; MDA-5; MDA5; Helicard; IDDM19; Interferon-Induced Helicase C Domain-Containing Protein 1; Clinically Amyopathic Dermatomyositis Autoantigen 140 kDa; Melanoma Differentiation-Associated Protein 5; Melanoma Differentiation-Associated Gene 5; RNA Helicase-DEAD Box Protein 116; Murabutide Down-Regulated Protein; Helicase With 2 CARD Domains; RIG-I-Like Receptor; CADM-140 Autoantigen; RLR-2; Hlcd; Interferon-Induced With Helicase C Domain Protein 1; DEAD/H (Asp-Glu-Ala-Asp/His) Box Polypeptide; EC 3.6.4.13; SGMRT1; IMD95; RH116; AGS7; HLCD

Background

Gene Name: IFIH1

NCBI Gene Entry: [64135](#)

UniProt Entry: [Q9BYX4](#)

Application Information

Molecular Weight: Predicted, 117 kDa, observed, 140 kDa

Clonality: Rabbit monoclonal antibody

Clone ID: 24GB6085

Species Reactivity: Human, mouse, rat

Applications Tested: Western blotting (WB), immunocytochemistry (IC)

Immunogen

A synthesized peptide derived from human MDA5

Isotype

Rabbit IgG

Storage Buffer

Supplied in PBS (pH 7.4) containing 50% glycerol, and 0.02% sodium azide.

Storage

Store at -20 °C for one year.

Recommended Dilutions

Western Blotting (WB): 1:1,000-1:5,000

SUPPORT

SUPPORT@GENUINBIOTECH.COM
TEL: +1-540-855-7041

ORDERS

SALES@GENUINBIOTECH.COM
FAX: +1-540-855-7041

WWW.GENUINBIOTECH.COM

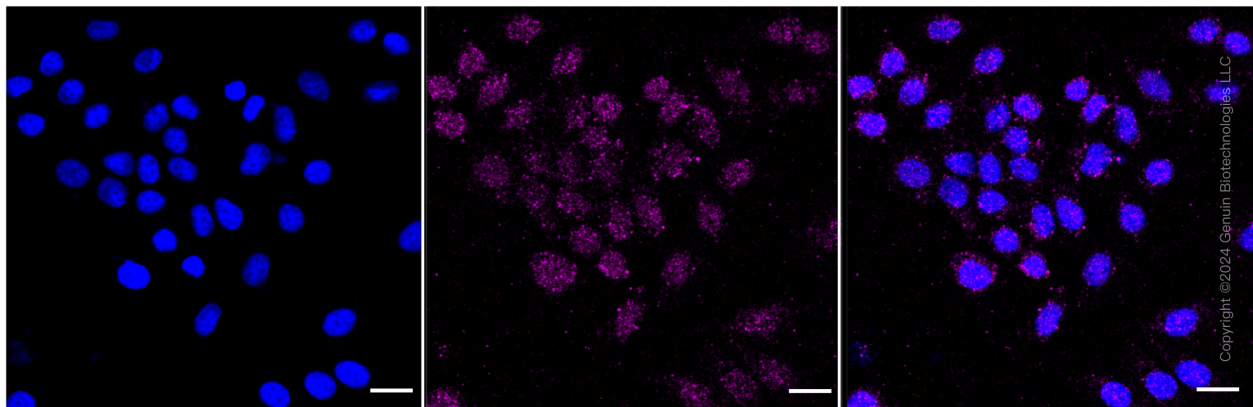
KD-Validated Anti-IFIH1 Recombinant Rabbit Monoclonal Antibody

PAGE 2

Immunocytochemistry (IC): 1:100-1:1,000

Note: This product is for research use only.

Validation Data



Immunocytochemical staining of HepG2 cells with anti-IFIH1 antibody (Cat#61179, 1:1,000). Nuclei were stained blue with DAPI; IFIH1 was stained magenta with Alexa Fluor® 647. Images were taken using Leica stellaris 5. Protein abundance based on laser Intensity and smart gain: Medium. Scale bar: 20 µm.

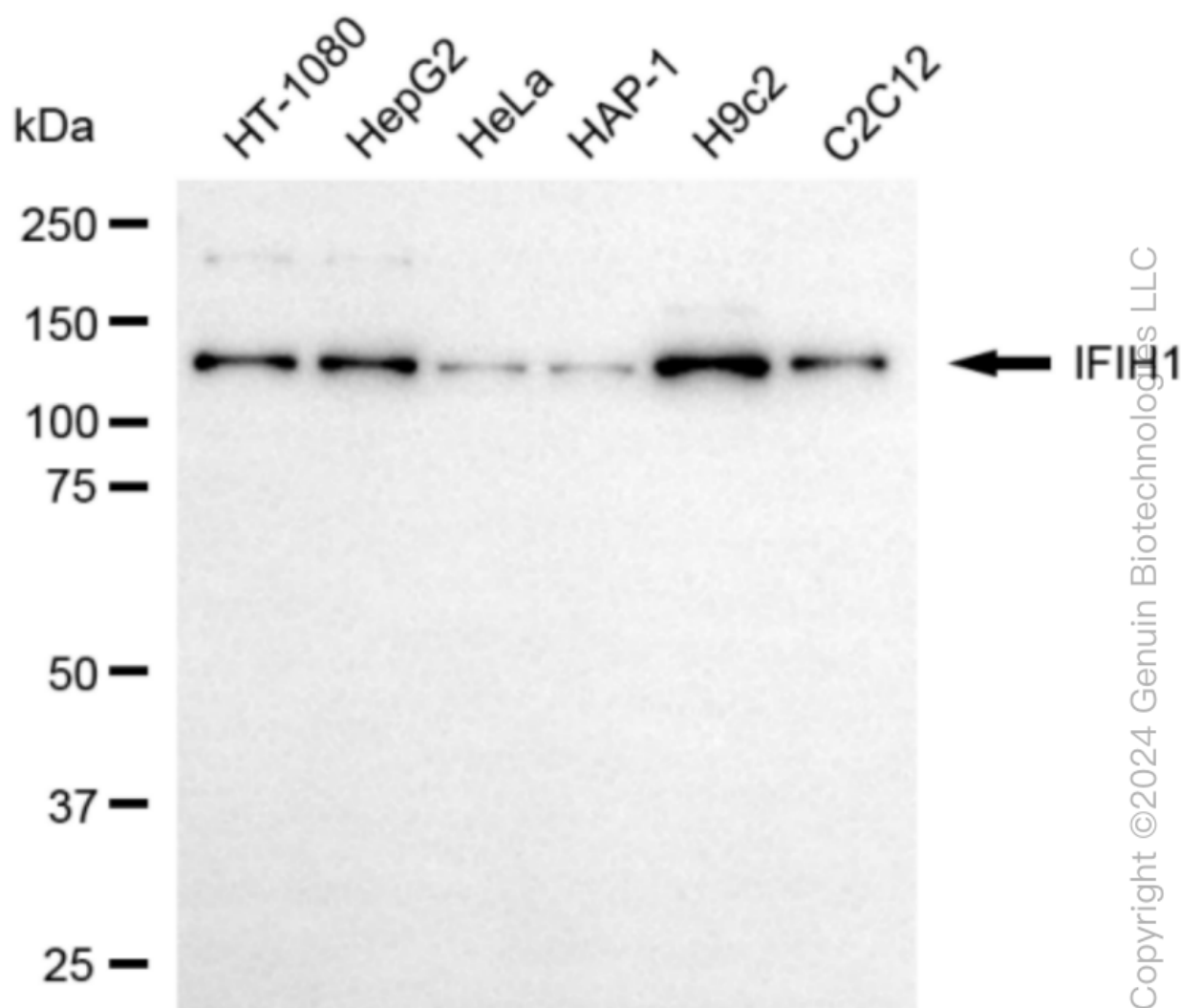
SUPPORT

SUPPORT@GENUINBIOTECH.COM
TEL: +1-540-855-7041

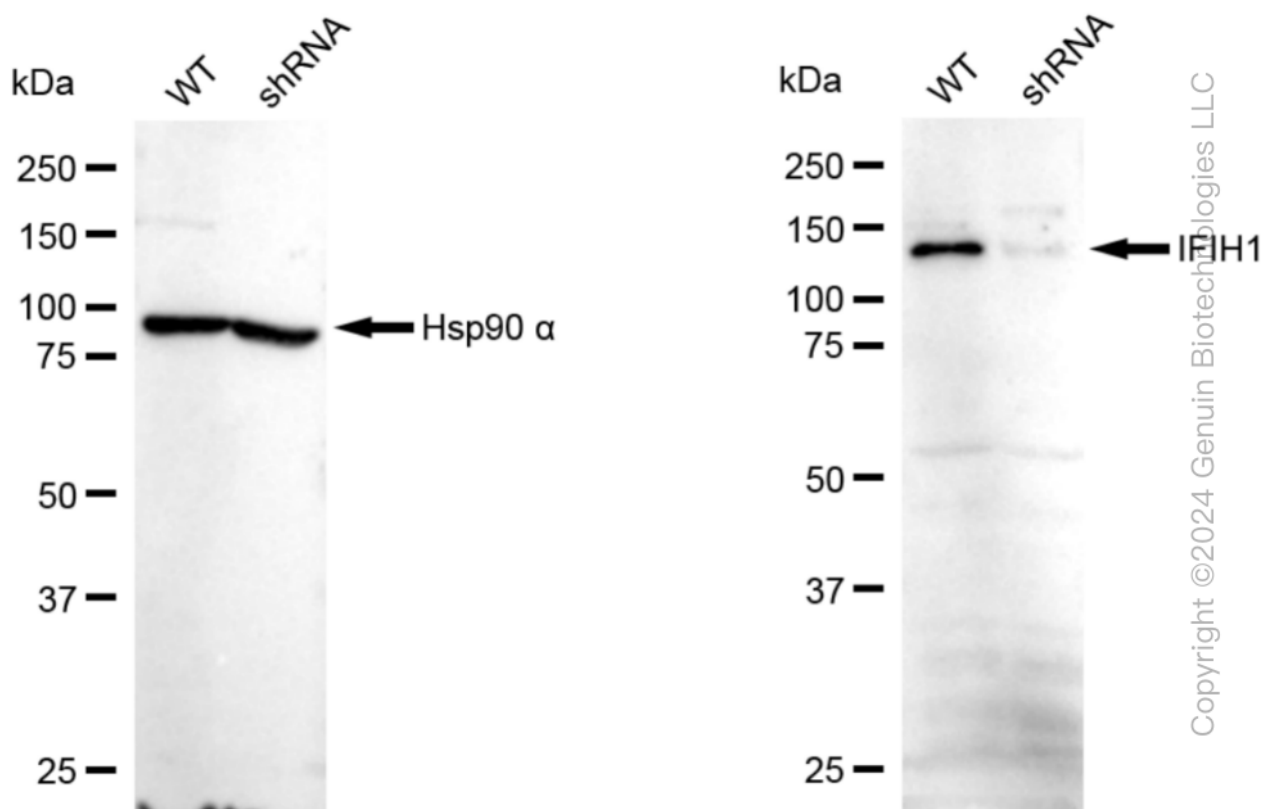
ORDERS

SALES@GENUINBIOTECH.COM
FAX: +1-540-855-7041

WWW.GENUINBIOTECH.COM



Western blotting analysis using anti-IFIH1 antibody (Cat#61179). Total cell lysates (30 µg) from various cell lines were loaded and separated by SDS-PAGE. The blot was incubated with anti-IFIH1 antibody (Cat#61179, 1:5,000) and HRP-conjugated goat anti-rabbit secondary antibody (Cat#201, 1:20,000) respectively. Image was developed using FeQ™ ECL Substrate Kit (Cat#226).



Western blotting analysis using anti-IFIH1 antibody (Cat#61179). IFIH1 expression in wild type (WT) and IFIH1 shRNA knockdown (KD) HT-1080 cells with 20 µg of total cell lysates. β-Tubulin serves as a loading control. The blot was incubated with anti-IFIH1 antibody (Cat#61179, 1:5,000) and HRP-conjugated goat anti-rabbit secondary antibody (Cat#201, 1:20,000) respectively. Image was developed using NaQ™ ECL Substrate Kit (Cat#716).