

KD-Validated Anti-PCBP2 Recombinant Rabbit Monoclonal Antibody



Catalog #: 61182

Aliases

PCBP2; Poly(RC) Binding Protein 2; Poly(RC)-Binding Protein 2; HNRNPE2; HNRPE2; Heterogeneous Nuclear Ribonucleoprotein E2; Heterogenous Nuclear Ribonucleoprotein E2; Alpha-CP2; HnRNP-E2; HnRNP E2; Epididymis Secretory Sperm Binding Protein; HNRNP-E2

Background

Gene Name: PCBP2

NCBI Gene Entry: [5094](#)

UniProt Entry: [Q15366](#)

Application Information

Molecular Weight: Predicted, 34-39 kDa, observed, 35,39 kDa

Clonality: Rabbit monoclonal antibody

Clone ID: 23GB2110

Species Reactivity: Human, mouse, rat

Applications Tested: Western blotting (WB), flow cytometry (FCM), immunocytochemistry (IC)

Immunogen

A synthesized peptide derived from human PCBP2

Isotype

Rabbit IgG

Storage Buffer

Supplied in PBS (pH 7.4) containing 50% glycerol, and 0.02% sodium azide.

Storage

Store at -20 °C for one year.

Recommended Dilutions

Western Blotting (WB): 1:1,000-1:5,000

Flow Cytometry (FCM): 1:2,000

Immunocytochemistry (IC): 1:100-1:1,000

Note: This product is for research use only.

SUPPORT

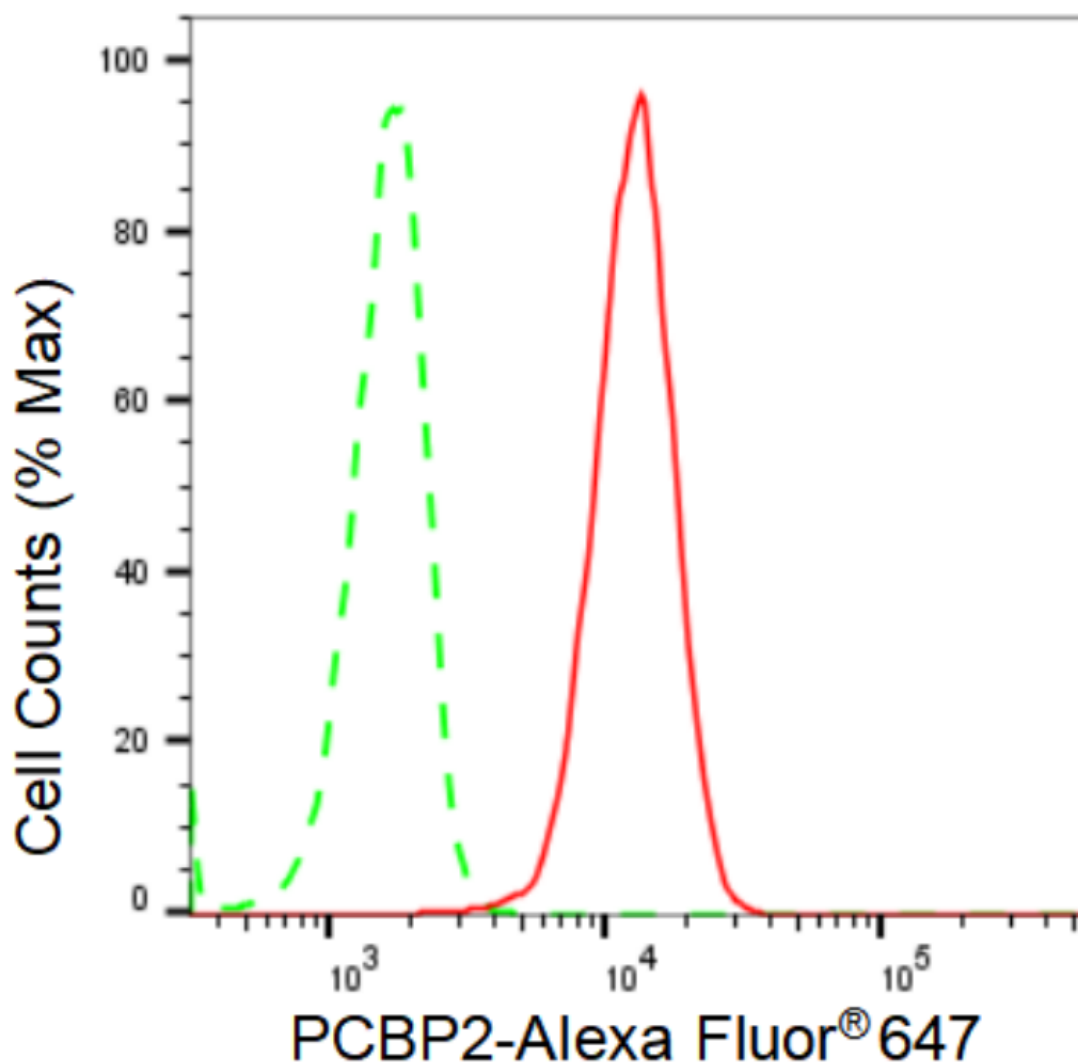
SUPPORT@GENUINBIOTECH.COM
TEL: +1-540-855-7041

ORDERS

SALES@GENUINBIOTECH.COM
FAX: +1-540-855-7041

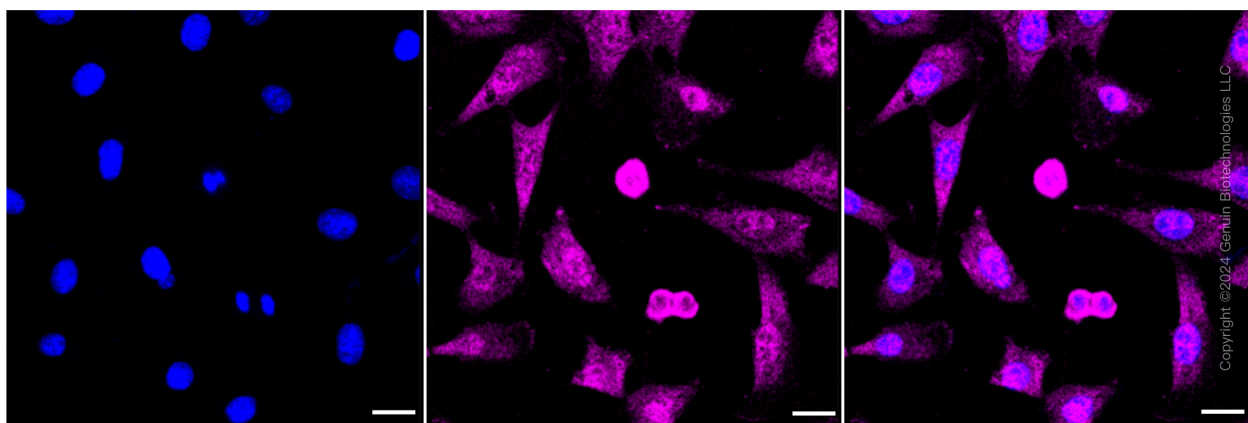
WWW.GENUINBIOTECH.COM

Validation Data



Copyright ©2024 Genuin Biotechnologies LLC

Flow cytometric analysis of PCBP2 expression in C2C12 cells using PCBP2 antibody (Cat#61182, 1:2,000). Green, isotype control; red, PCBP2.



Copyright ©2024 Genuin Biotechnologies LLC

SUPPORT

SUPPORT@GENUINBIOTECH.COM
TEL: +1-540-855-7041

ORDERS

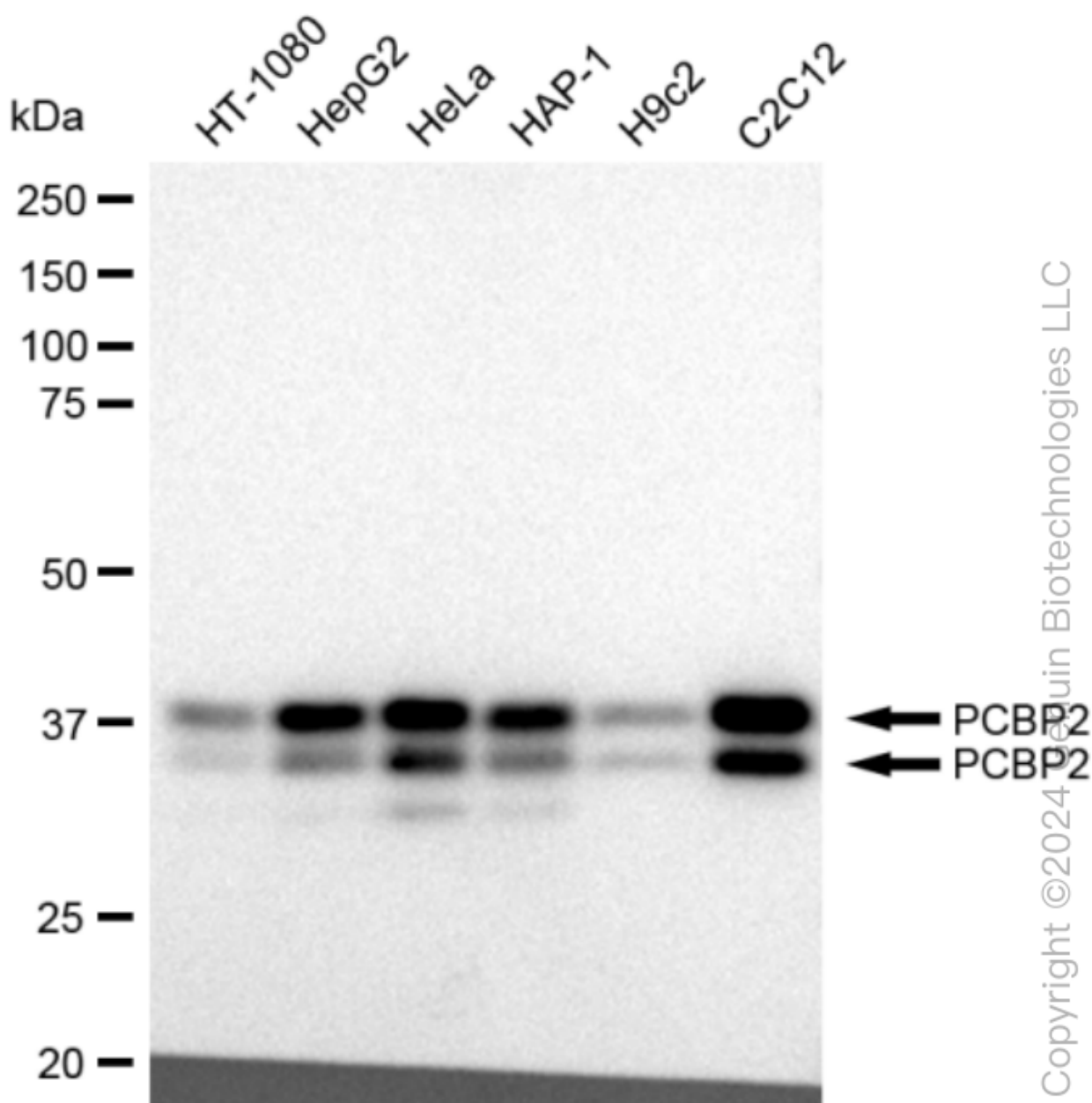
SALES@GENUINBIOTECH.COM
FAX: +1-540-855-7041

WWW.GENUINBIOTECH.COM

KD-Validated Anti-PCBP2 Recombinant Rabbit Monoclonal Antibody

PAGE 3

Immunocytochemical staining of C2C12 cells with PCBP2 antibody (Cat#61182, 1:1,000). Nuclei were stained blue with DAPI; PCBP2 was stained magenta with Alexa Fluor® 647. Images were taken using Leica stellaris 5. Protein abundance based on laser Intensity and smart gain: Medium. Scale bar: 20 μ m.



Western blotting analysis using anti-PCBP2 antibody (Cat#61182). Total cell lysates (30 μ g) from various cell lines were loaded and separated by SDS-PAGE. The blot was incubated with anti-PCBP2 antibody (Cat#61182, 1:5,000) and HRP-conjugated goat anti-rabbit secondary antibody (Cat#201, 1:20,000) respectively. Image was developed using FeQ™ ECL Substrate Kit (Cat#226).

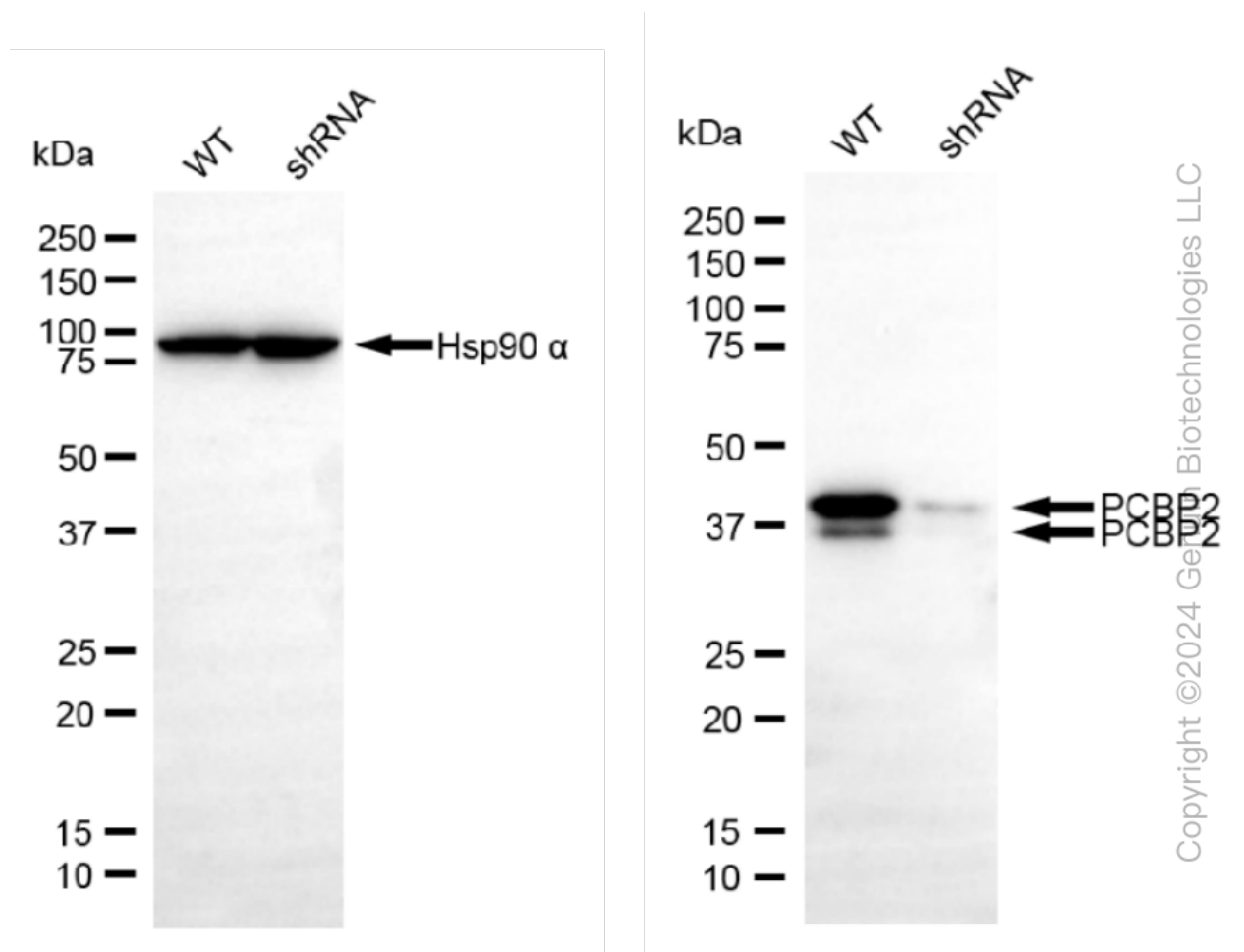
SUPPORT

SUPPORT@GENUINBIOTECH.COM
TEL: +1-540-855-7041

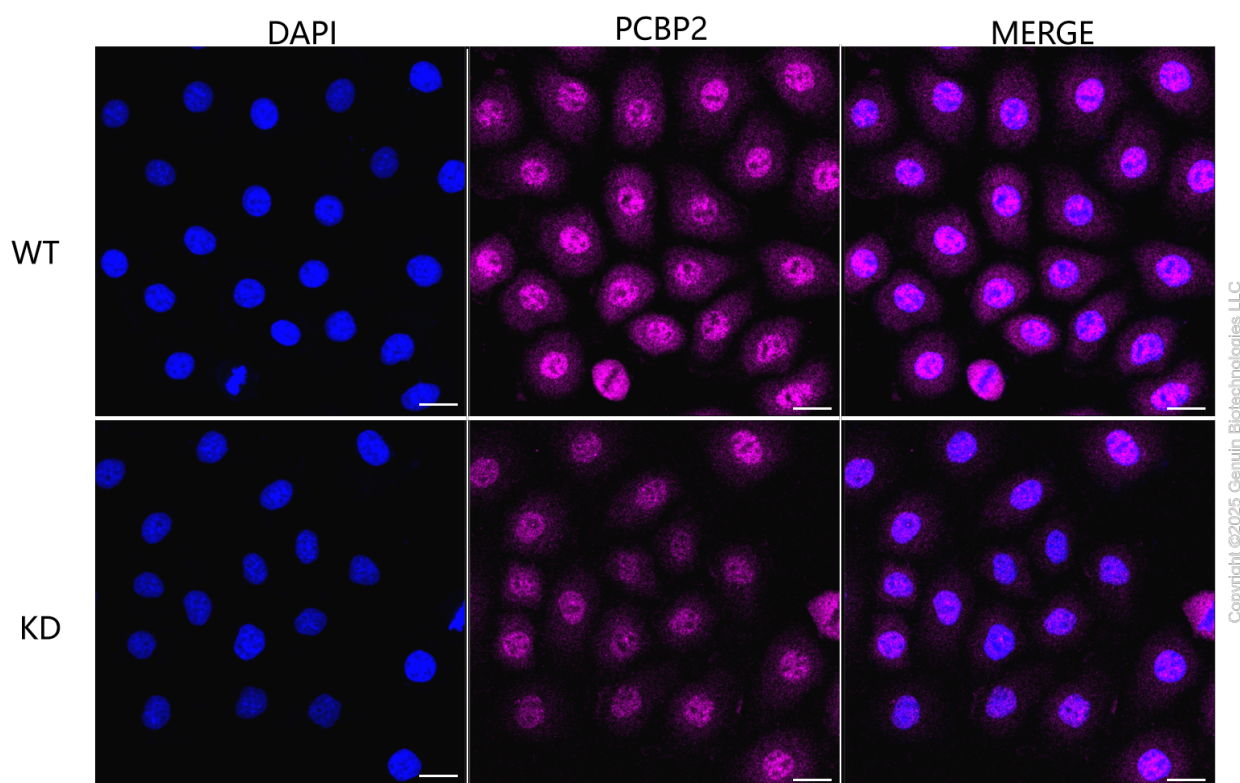
ORDERS

SALES@GENUINBIOTECH.COM
FAX: +1-540-855-7041

WWW.GENUINBIOTECH.COM



Western blotting analysis using anti-PCBP2 antibody (Cat#61182). PCBP2 expression in wild type (WT) and PCBP2 shRNA knockdown (KD) HeLa cells with 30 µg of total cell lysates. Hsp90 α serves as a loading control. The blot was incubated with anti-PCBP2 antibody (Cat#61182, 1:5,000) and HRP-conjugated goat anti-rabbit secondary antibody (Cat#201, 1:20,000) respectively. Image was developed using FeQ™ ECL Substrate Kit (Cat#226).



Immunocytochemical staining of HeLa cells using anti-PCBP2 antibody (Cat#61182, 1:1,000), Top panel: wild-type (WT); Bottom panel:PCBP2 shRNA knockdown (KD). Nuclei were stained blue with DAPI;PCBP2 was stained magenta with Alexa Fluor® 647. Scale bar, 20 μ m. Permeabilization: Triton.