

KD-Validated Anti-Gli3 Recombinant Rabbit Monoclonal Antibody



Catalog #: 61185

Aliases

GLI Family Zinc Finger 3; PAP-A; PAPA1; PPDIV; PAPA; PAPB; ACLS; Glioma-Associated Oncogene Family Zinc Finger 3; GLI-Kruppel Family Member GLI3; Transcriptional Activator GLI3; Zinc Finger Protein GLI3; Oncogene GLI3; GLI3-190; GLI3FL; GCPS; PHS; Greig Cephalopolysyndactyly Syndrome; GLI3 Full-Length Protein; GLI3 Form Of 190 KDa; DNA-Binding Protein

Background

Gene Name: GLI3

NCBI Gene Entry: [2737](#)

UniProt Entry: [P10071](#)

Application Information

Molecular Weight: Predicted, 170 kDa, observed, 190 kDa

Clonality: Rabbit monoclonal antibody

Clone ID: 24GB6105

Species Reactivity: Human

Applications Tested: Western blotting (WB), flow cytometry (FCM), immunocytochemistry (IC)

Immunogen

A synthesized peptide derived from human Gli3

Isotype

Rabbit IgG

Storage Buffer

Supplied in PBS (pH 7.4) containing 50% glycerol, and 0.02% sodium azide.

Storage

Store at -20 °C for one year.

Recommended Dilutions

Western Blotting (WB): 1:1,000-1:5,000

Flow Cytometry (FCM): 1:2,000

Immunocytochemistry (IC): 1:100-1:1,000

SUPPORT

SUPPORT@GENUINBIOTECH.COM
TEL: +1-540-855-7041

ORDERS

SALES@GENUINBIOTECH.COM
FAX: +1-540-855-7041

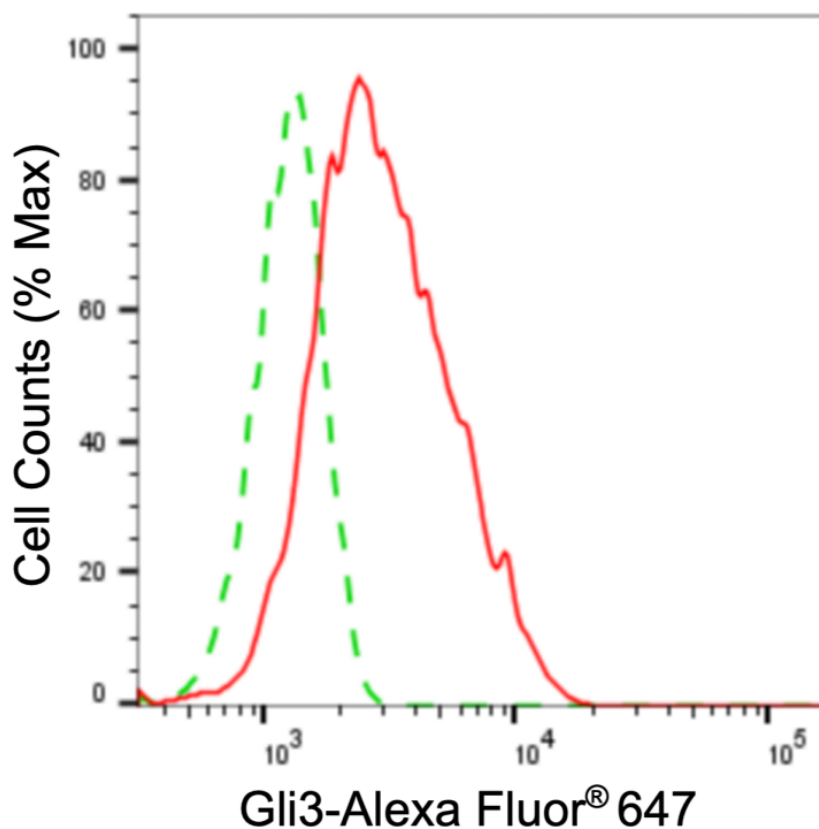
WWW.GENUINBIOTECH.COM

KD-Validated Anti-Gli3 Recombinant Rabbit Monoclonal Antibody

PAGE 2

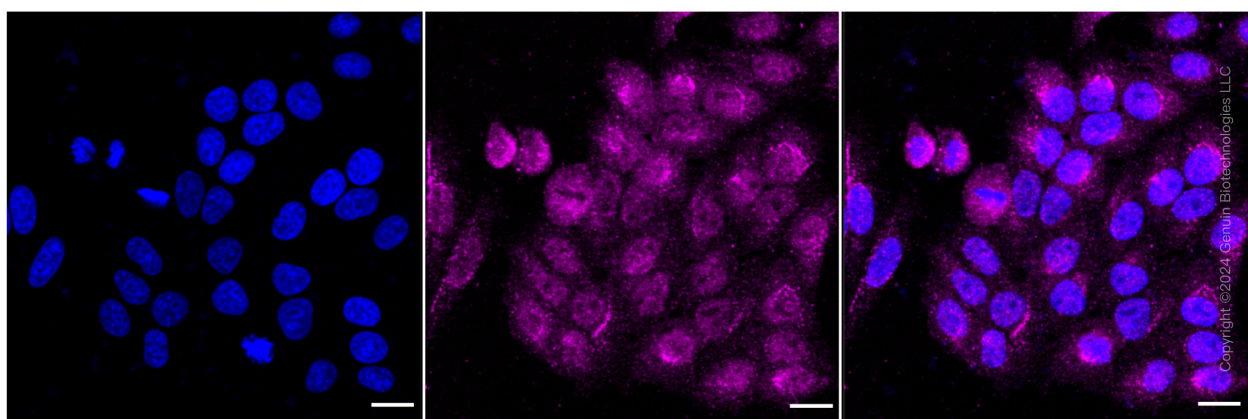
Note: This product is for research use only.

Validation Data



Copyright ©2024 Genuin Biotechnologies LLC

Flow cytometric analysis of gli3 expression in HepG2 cells using anti-gli3 antibody (Cat#61185, 1:2,000). Green, isotype control; red, gli3.



Copyright ©2024 Genuin Biotechnologies LLC

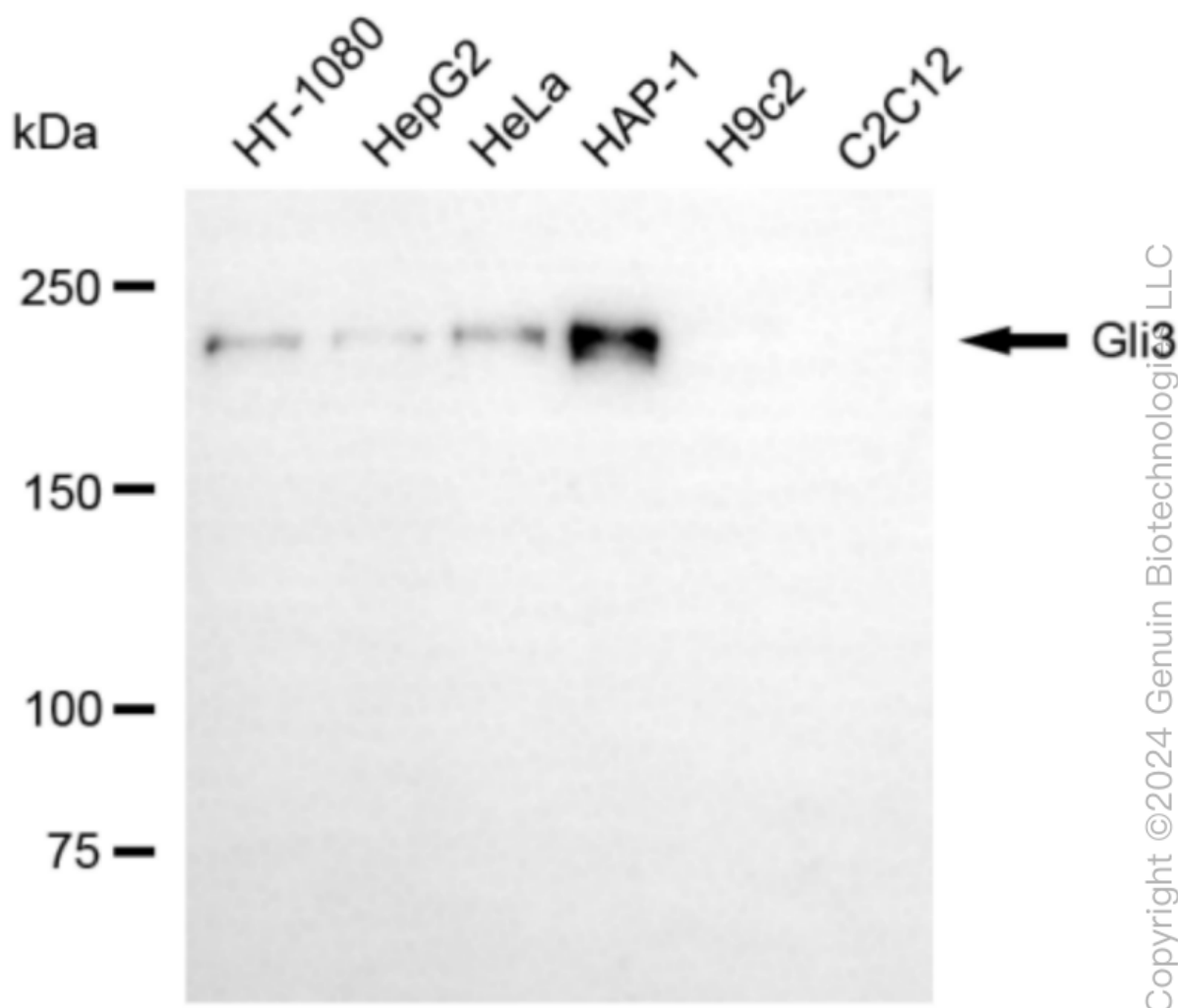
SUPPORT

SUPPORT@GENUINBIOTECH.COM
TEL: +1-540-855-7041

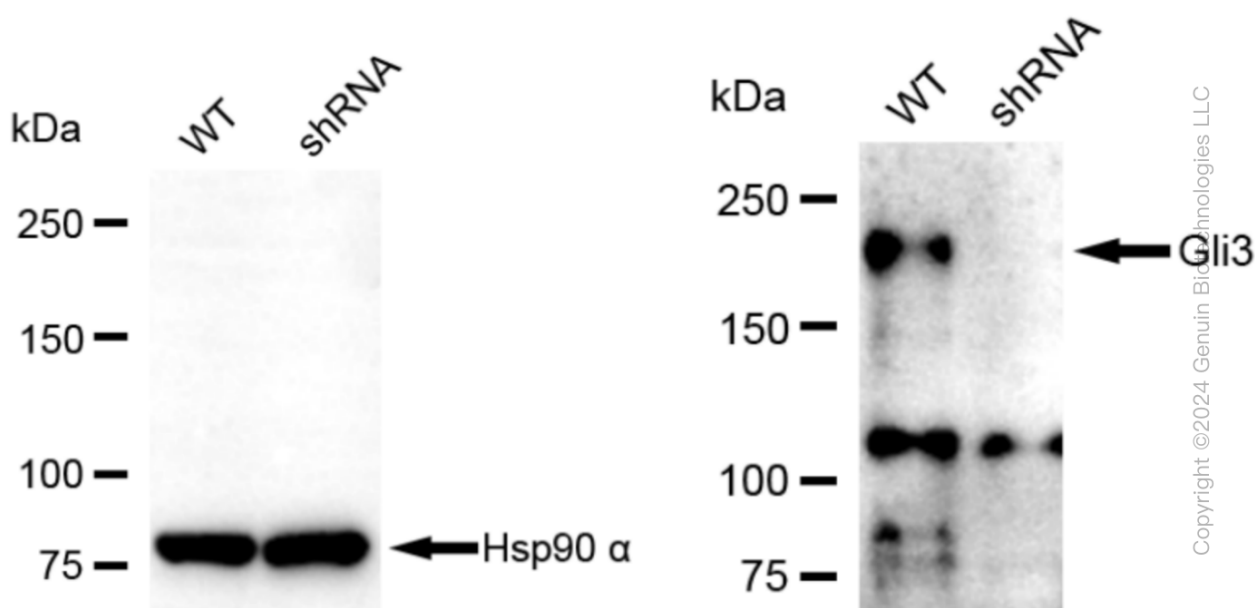
ORDERS

SALES@GENUINBIOTECH.COM
FAX: +1-540-855-7041

WWW.GENUINBIOTECH.COM



Western blotting analysis using anti-gli3 antibody (Cat#61185). Total cell lysates (30 µg) from various cell lines were loaded and separated by SDS-PAGE. The blot was incubated with anti-gli3 antibody (Cat#61185, 1:5,000) and HRP-conjugated goat anti-rabbit secondary antibody (Cat#201, 1:20,000) respectively. Image was developed using NaQ™ ECL Substrate Kit (Cat#716).



Western blotting analysis using anti-gli3 antibody (Cat#61185). Gli3 expression in wild-type (WT) and GLI3 shRNA knockdown (KD) HT-1080 cells with 30 μ g of total cell lysates. Hsp90 α serves as a loading control. The blot was incubated with anti-gli3 antibody (Cat#61185, 1:5,000) and HRP-conjugated goat anti-rabbit secondary antibody (Cat#201, 1:20,000) respectively. Image was developed using FeQTM ECL Substrate Kit (Cat#226). GLI3, GLI Family Zinc Finger 3.