

# KD-Validated Anti-Growth differentiation factor 3 Recombinant Rabbit Monoclonal



**Catalog #: 61186**

## Aliases

GDF3; Growth Differentiation Factor 3; Growth/Differentiation Factor 3; MCOPCB6; MCOP7; GDF-3; KFS3

## Background

Gene Name: GDF3

NCBI Gene Entry: [9573](#)

UniProt Entry: [Q9NR23](#)

## Application Information

Molecular Weight: Predicted, 41 kDa, observed, 16 kDa

Clonality: Rabbit monoclonal antibody

Clone ID: 24GB6110

Species Reactivity: Human, mouse, rat

Applications Tested: Western blotting (WB)

## Immunogen

A synthesized peptide derived from human GDF3

## Isotype

Rabbit IgG

## Storage Buffer

Supplied in PBS (pH 7.4) containing 50% glycerol, and 0.02% sodium azide.

## Storage

Store at -20 °C for one year.

## Recommended Dilutions

Western Blotting (WB): 1:1,000-1:5,000

**Note:** This product is for research use only.

## Validation Data

---

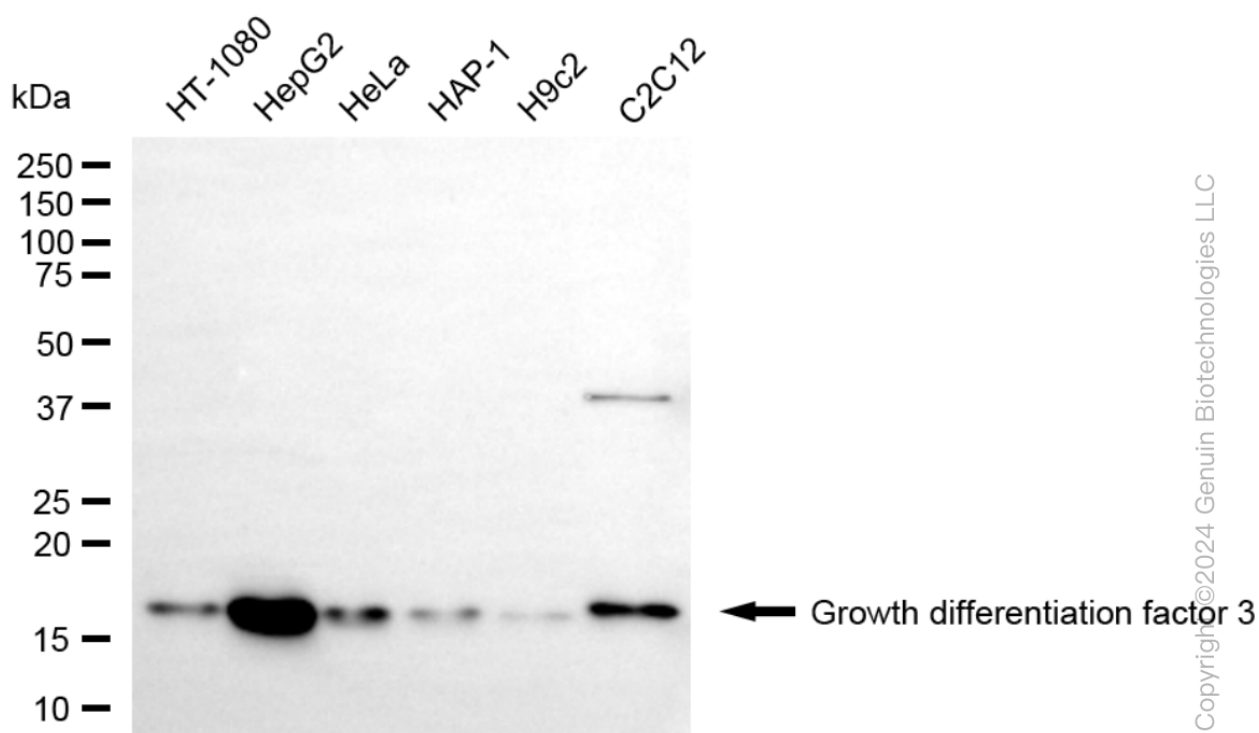
### SUPPORT

SUPPORT@GENUINBIOTECH.COM  
TEL: +1-540-855-7041

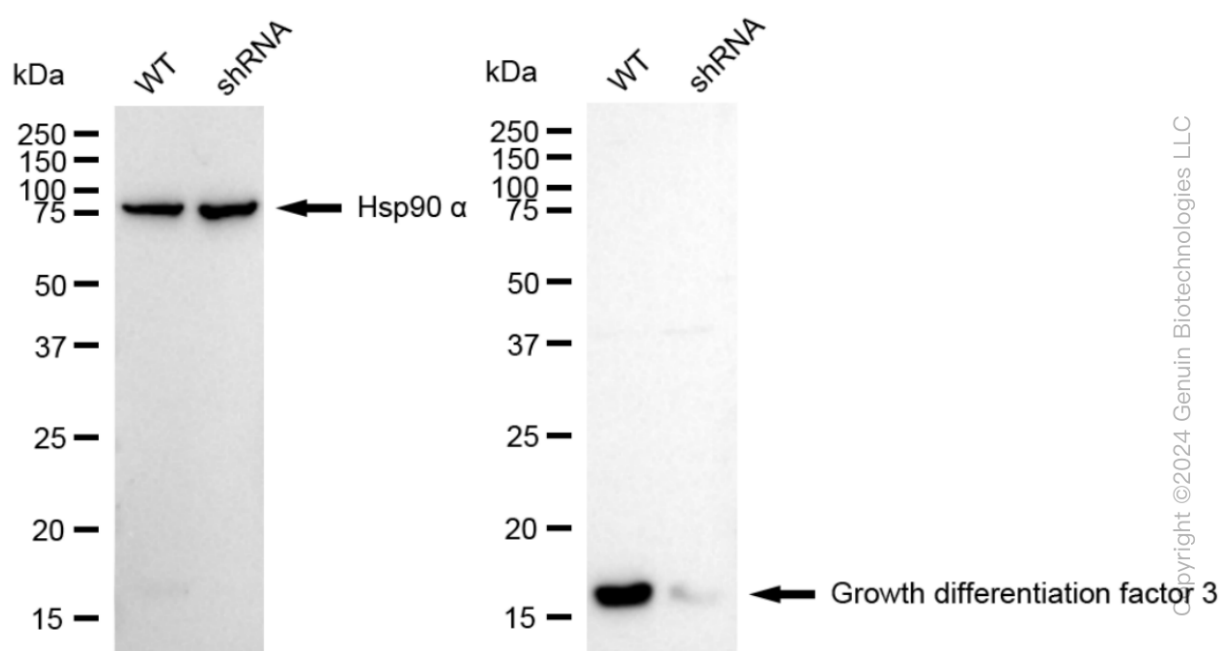
### ORDERS

SALES@GENUINBIOTECH.COM  
FAX: +1-540-855-7041

[WWW.GENUINBIOTECH.COM](http://WWW.GENUINBIOTECH.COM)



Western blotting analysis using anti-growth differentiation factor 3 antibody (Cat#61186). Total cell lysates (30  $\mu$ g) from various cell lines were loaded and separated by SDS-PAGE. The blot was incubated with anti-growth differentiation factor 3 antibody (Cat#61186, 1:5,000) and HRP-conjugated goat anti-rabbit secondary antibody (Cat#201, 1:20,000) respectively. Image was developed using NaQ™ ECL Substrate Kit (Cat#716).



Western blotting analysis using anti-growth differentiation factor 3 antibody (Cat#61186). Growth

## **KD-Validated Anti-Growth differentiation factor 3 Recombinant Rabbit Monoclonal**

PAGE 3

differentiation factor 3 expression in wild type (WT) and growth differentiation factor 3 (GDF3) shRNA knockdown (KD) HeLa cells with 20 µg of total cell lysates. Hsp90  $\alpha$  serves as a loading control. The blot was incubated with anti-growth differentiation factor 3 antibody (Cat#61186, 1:5,000) and HRP-conjugated goat anti-rabbit secondary antibody (Cat#201, 1:20,000) respectively. Image was developed using NaQ™ ECL Substrate Kit (Cat#716).

---

### **SUPPORT**

SUPPORT@GENUINBIOTECH.COM  
TEL: +1-540-855-7041

### **ORDERS**

SALES@GENUINBIOTECH.COM  
FAX: +1-540-855-7041

**WWW.GENUINBIOTECH.COM**