

KD-Validated Anti-Peroxiredoxin 1 Recombinant Rabbit Monoclonal Antibody



Catalog #: 61187

Aliases

PRDX1; Peroxiredoxin 1; NKEFA; PAGA; Thioredoxin-Dependent Peroxide Reductase; Natural Killer Cell-Enhancing Factor A; Proliferation-Associated Gene Protein; Thioredoxin-Dependent Peroxiredoxin 1; Thioredoxin Peroxidase; Peroxiredoxin-1; NKEF-A; TDPX2; PAGB; PAG; Epididymis Secretory Sperm Binding Protein; Natural Killer-Enhancing Factor A; Proliferation-Associated Gene A; EC 1.11.1.24; EC 1.11.1.15; EC 1.11.1; MSP23; PRX1; PRXI

Background

Gene Name: PRDX1

NCBI Gene Entry: [5052](#)

UniProt Entry: [Q06830](#)

Application Information

Molecular Weight: Predicted, 22 kDa, observed, 22 kDa

Clonality: Rabbit monoclonal antibody

Clone ID: 23GB2120

Species Reactivity: Human, mouse

Applications Tested: Western blotting (WB), flow cytometry (FCM), immunocytochemistry (IC)

Immunogen

A synthesized peptide derived from human PRDX1

Isotype

Rabbit IgG

Storage Buffer

Supplied in PBS (pH 7.4) containing 50% glycerol, and 0.02% sodium azide.

Storage

Store at -20 °C for one year.

Recommended Dilutions

Western Blotting (WB): 1:1,000-1:5,000

Flow Cytometry (FCM): 1:2,000

Immunocytochemistry (IC): 1:100-1:1,000

SUPPORT

SUPPORT@GENUINBIOTECH.COM
TEL: +1-540-855-7041

ORDERS

SALES@GENUINBIOTECH.COM
FAX: +1-540-855-7041

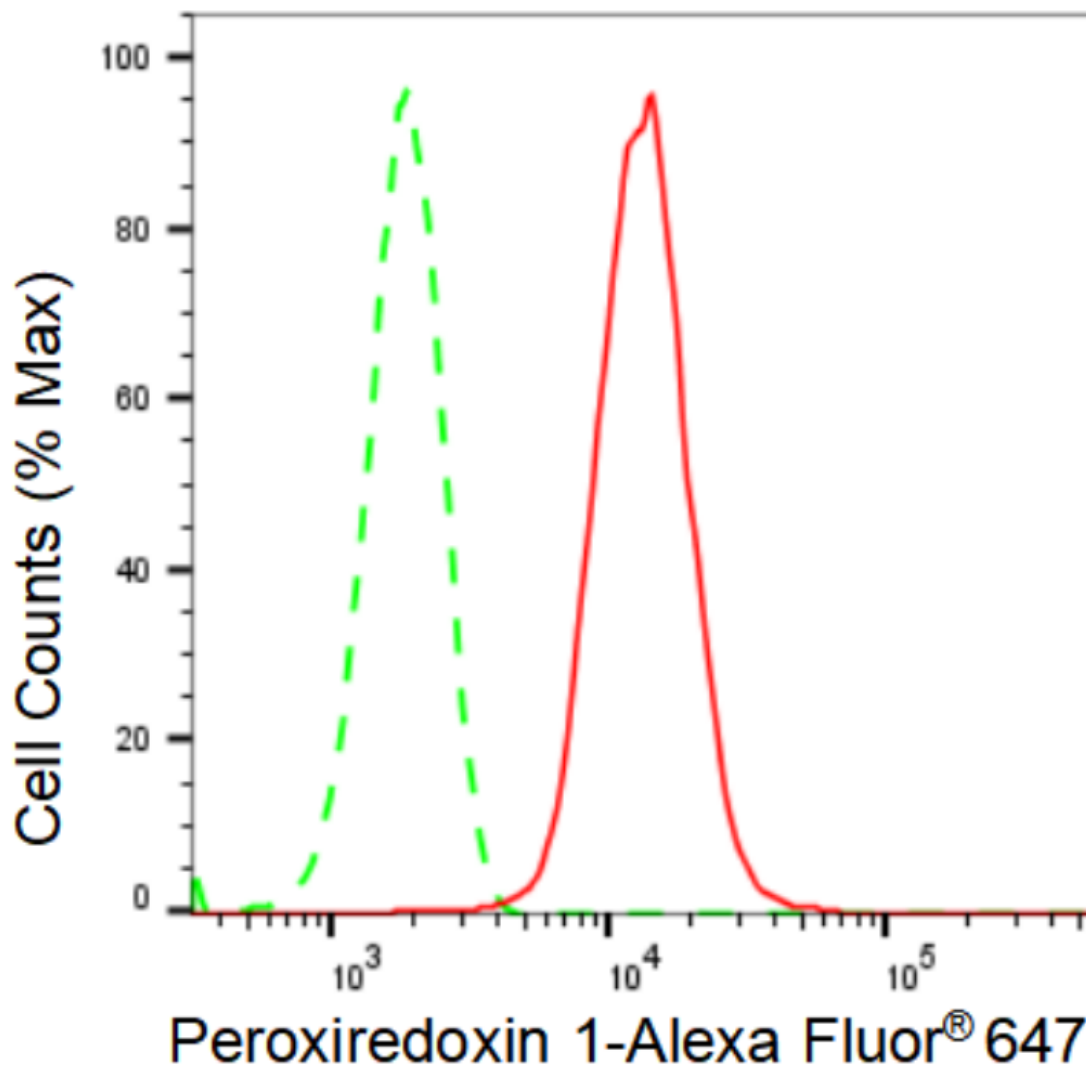
WWW.GENUINBIOTECH.COM

KD-Validated Anti-Peroxiredoxin 1 Recombinant Rabbit Monoclonal Antibody

PAGE 2

Note: This product is for research use only.

Validation Data



Copyright ©2024 Genuin Biotechnologies LLC

Flow cytometric analysis of Peroxiredoxin 1 expression in HepG2 cells using Peroxiredoxin 1 antibody (Cat#61187, 1:2,000). Green, isotype control; red, Peroxiredoxin 1.

SUPPORT

SUPPORT@GENUINBIOTECH.COM
TEL: +1-540-855-7041

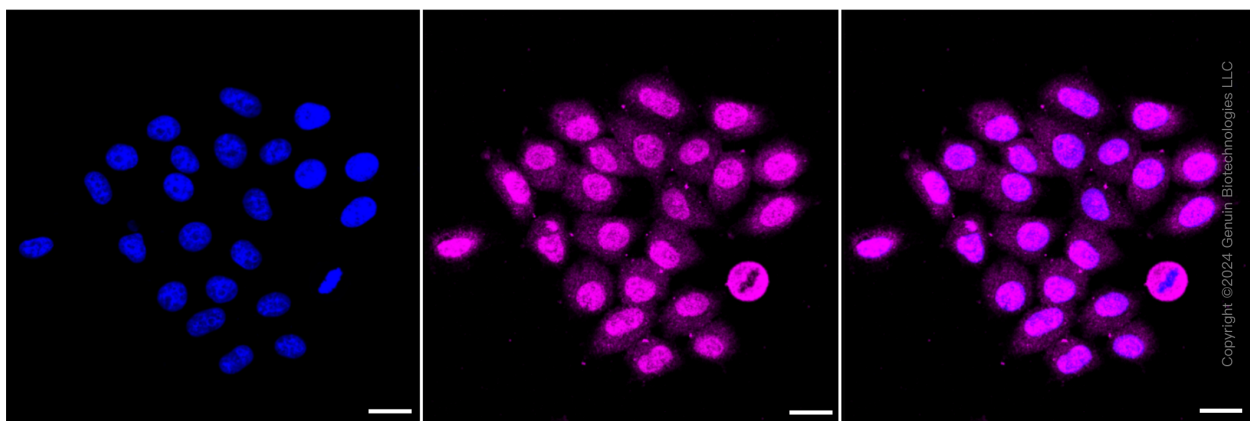
ORDERS

SALES@GENUINBIOTECH.COM
FAX: +1-540-855-7041

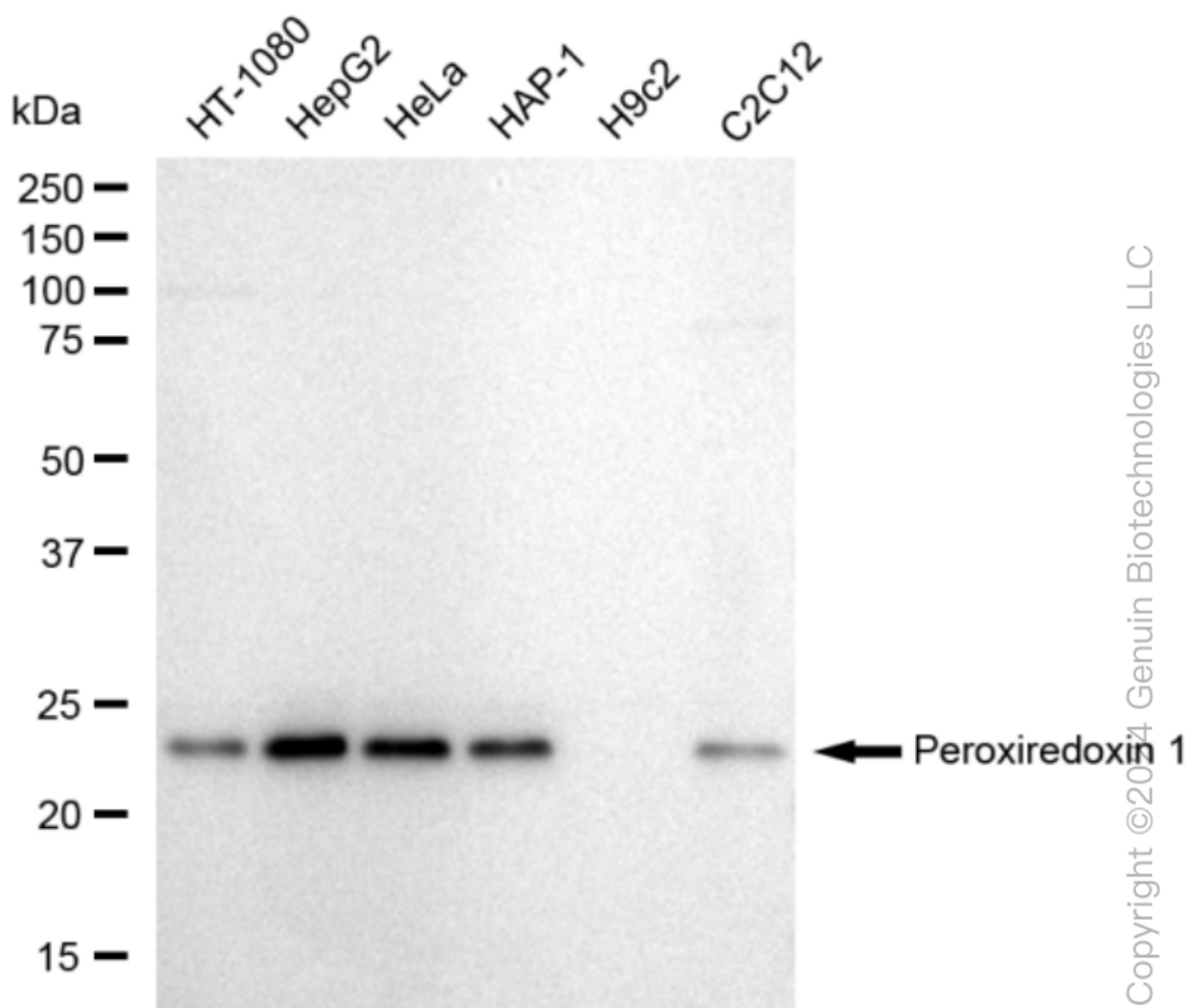
WWW.GENUINBIOTECH.COM

KD-Validated Anti-Peroxiredoxin 1 Recombinant Rabbit Monoclonal Antibody

PAGE 3



Immunocytochemical staining of HepG2 cells with Peroxiredoxin 1 antibody (Cat#61187, 1:1,000). Nuclei were stained blue with DAPI; Peroxiredoxin 1 was stained magenta with Alexa Fluor® 647. Images were taken using Leica stellaris 5. Protein abundance based on laser Intensity and smart gain: High. Scale bar: 20 μ m.



SUPPORT

SUPPORT@GENUINBIOTECH.COM
TEL: +1-540-855-7041

ORDERS

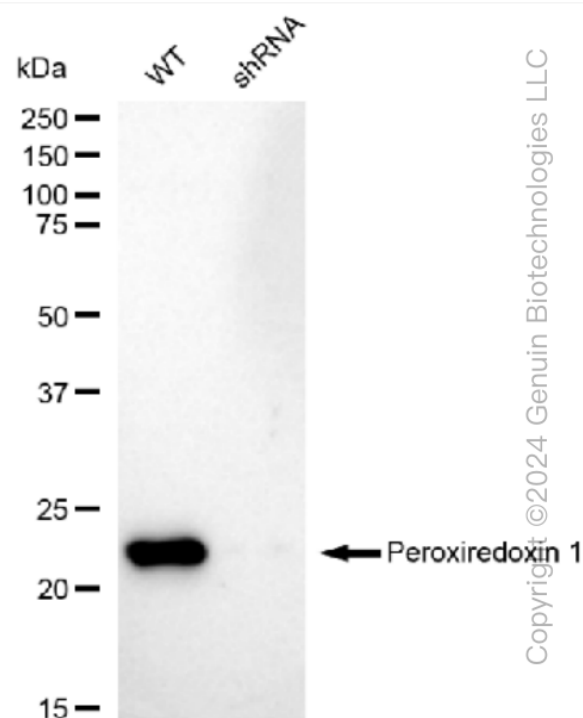
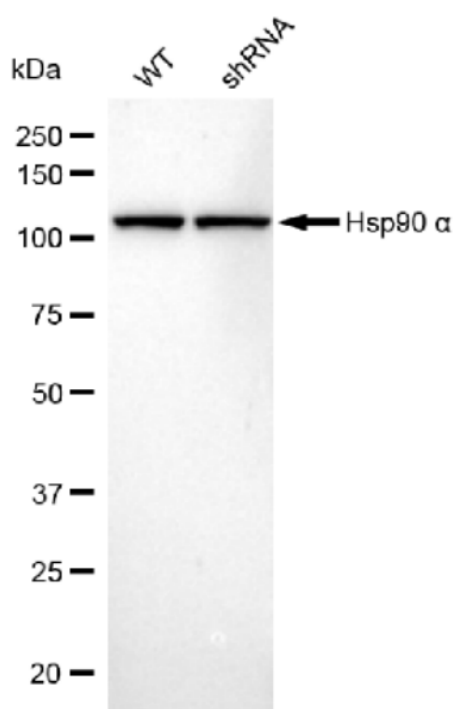
SALES@GENUINBIOTECH.COM
FAX: +1-540-855-7041

WWW.GENUINBIOTECH.COM

KD-Validated Anti-Peroxiredoxin 1 Recombinant Rabbit Monoclonal Antibody

PAGE 4

Western blotting analysis using anti-Peroxiredoxin 1 antibody (Cat#61187). Total cell lysates (30 μ g) from various cell lines were loaded and separated by SDS-PAGE. The blot was incubated with anti-Peroxiredoxin 1 antibody (Cat#61187, 1:5,000) and HRP-conjugated goat anti-rabbit secondary antibody (Cat#201, 1:20,000) respectively. Image was developed using FeQ™ ECL Substrate Kit (Cat#226).



Western blotting analysis using anti-Peroxiredoxin 1 antibody (Cat#61187). Peroxiredoxin 1 expression in wild type (WT) and peroxiredoxin 1 shRNA knockdown (KD) HeLa cells with 30 μ g of total cell lysates. β -Tubulin serves as a loading control. The blot was incubated with anti-Peroxiredoxin 1 antibody (Cat#61187, 1:5,000) and HRP-conjugated goat anti-rabbit secondary antibody (Cat#201, 1:20,000) respectively. Image was developed using FeQ™ ECL Substrate Kit (Cat#226).

SUPPORT

SUPPORT@GENUINBIOTECH.COM
TEL: +1-540-855-7041

ORDERS

SALES@GENUINBIOTECH.COM
FAX: +1-540-855-7041

WWW.GENUINBIOTECH.COM