

KD-Validated Anti-UCHL1 Recombinant Rabbit Monoclonal Antibody



Catalog #: 61188

Aliases

UCHL1; Ubiquitin C-Terminal Hydrolase L1; PGP9.5; UCHL-1; Ubiquitin Carboxyl-Terminal Esterase L1 (Ubiquitin Thiolesterase); Ubiquitin Carboxyl-Terminal Hydrolase Isozyme L1; Neuron Cytoplasmic Protein 9.5; Ubiquitin Thioesterase L1; Ubiquitin Thiolesterase; PGP 9.5; Uch-L1; UCH-L1; PARK5; Epididymis Secretory Protein Li 53; Epididymis Luminal Protein 117; EC 3.4.19.12; HEL-S-53; HEL-117; SPG79A; NDGOA; PGP95; SPG79

Background

Gene Name: UCHL1

NCBI Gene Entry: [7345](#)

UniProt Entry: [P09936](#)

Application Information

Molecular Weight: Predicted, 25 kDa, observed, 25 kDa

Clonality: Rabbit monoclonal antibody

Clone ID: 23GB2125

Species Reactivity: Human

Applications Tested: Western blotting (WB), flow cytometry (FCM), immunocytochemistry (IC)

Immunogen

A synthesized peptide derived from human PGP9.5

Isotype

Rabbit IgG

Storage Buffer

Supplied in PBS (pH 7.4) containing 50% glycerol, and 0.02% sodium azide.

Storage

Store at -20 °C for one year.

Recommended Dilutions

Western Blotting (WB): 1:1,000-1:5,000

Flow Cytometry (FCM): 1:2,000

Immunocytochemistry (IC): 1:100-1:1,000

SUPPORT

SUPPORT@GENUINBIOTECH.COM
TEL: +1-540-855-7041

ORDERS

SALES@GENUINBIOTECH.COM
FAX: +1-540-855-7041

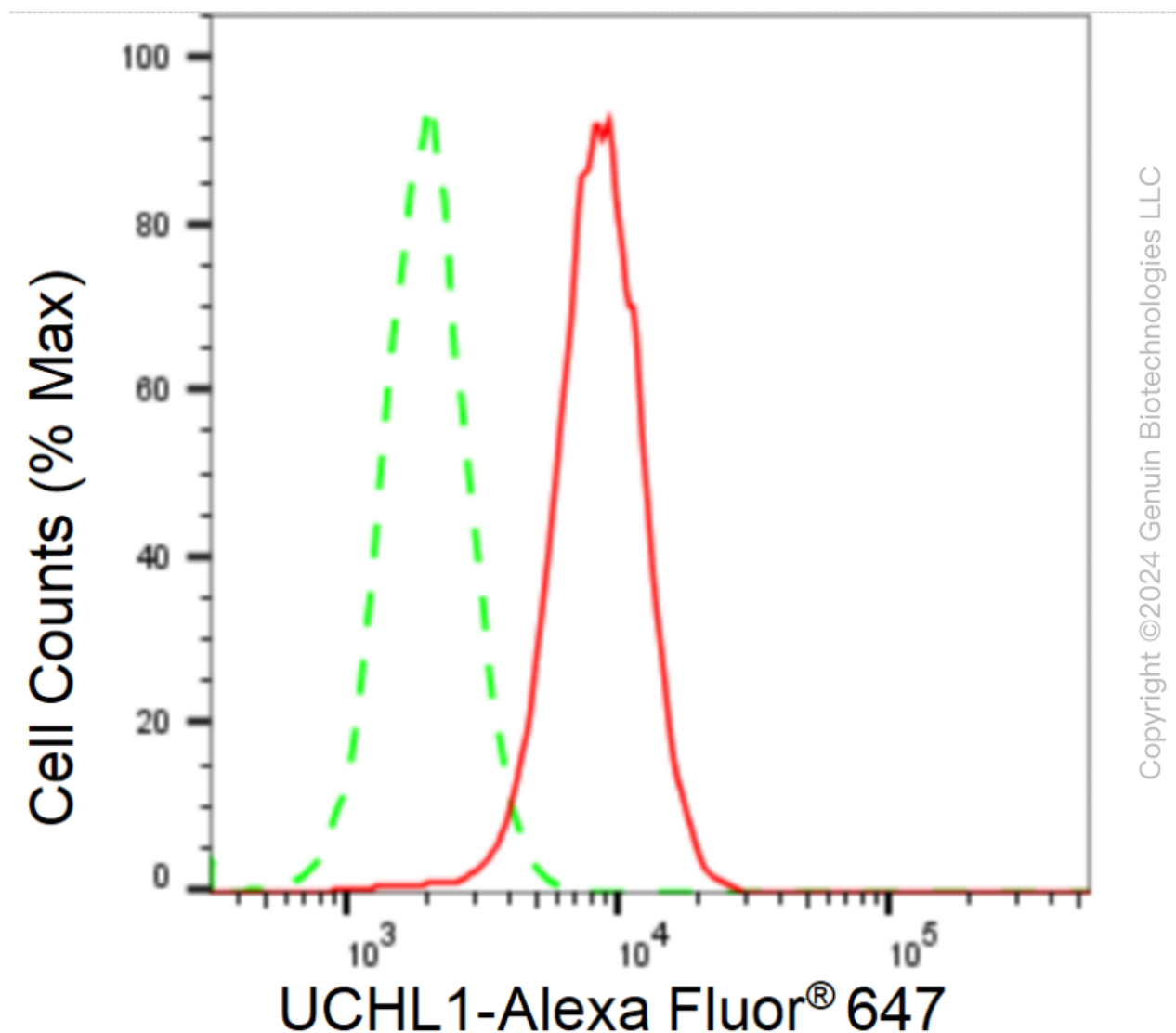
WWW.GENUINBIOTECH.COM

KD-Validated Anti-UCHL1 Recombinant Rabbit Monoclonal Antibody

PAGE 2

Note: This product is for research use only.

Validation Data



Flow cytometric analysis of UCHL1 expression in HAP-1 cells using UCHL1 antibody (Cat#61188, 1:2,000). Green, isotype control; red, UCHL1.

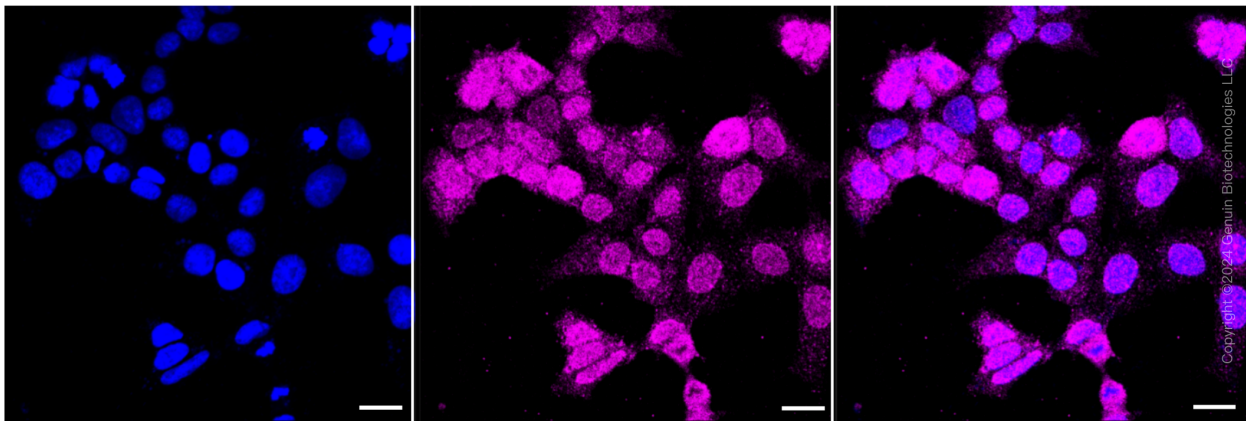
SUPPORT

SUPPORT@GENUINBIOTECH.COM
TEL: +1-540-855-7041

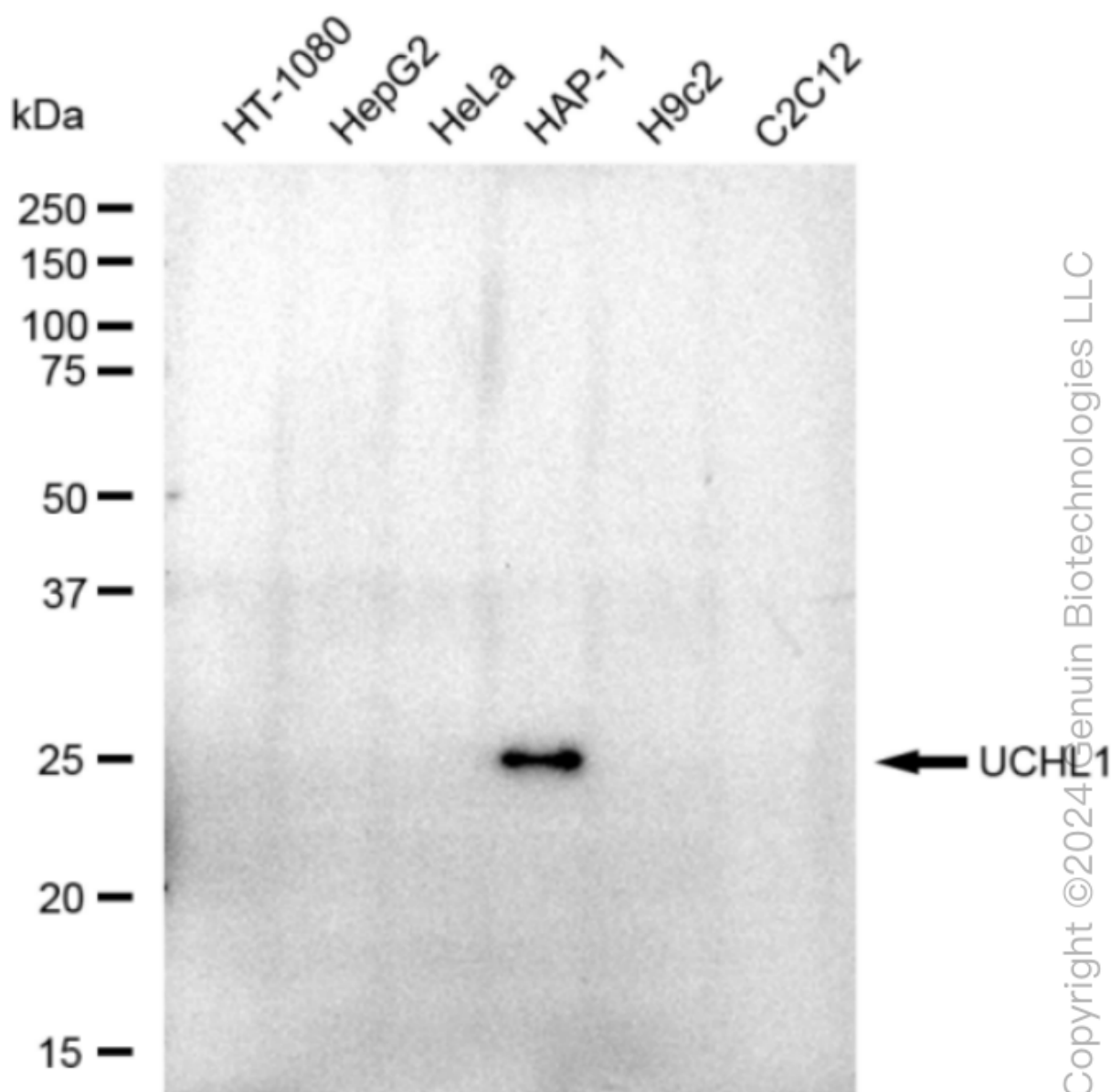
ORDERS

SALES@GENUINBIOTECH.COM
FAX: +1-540-855-7041

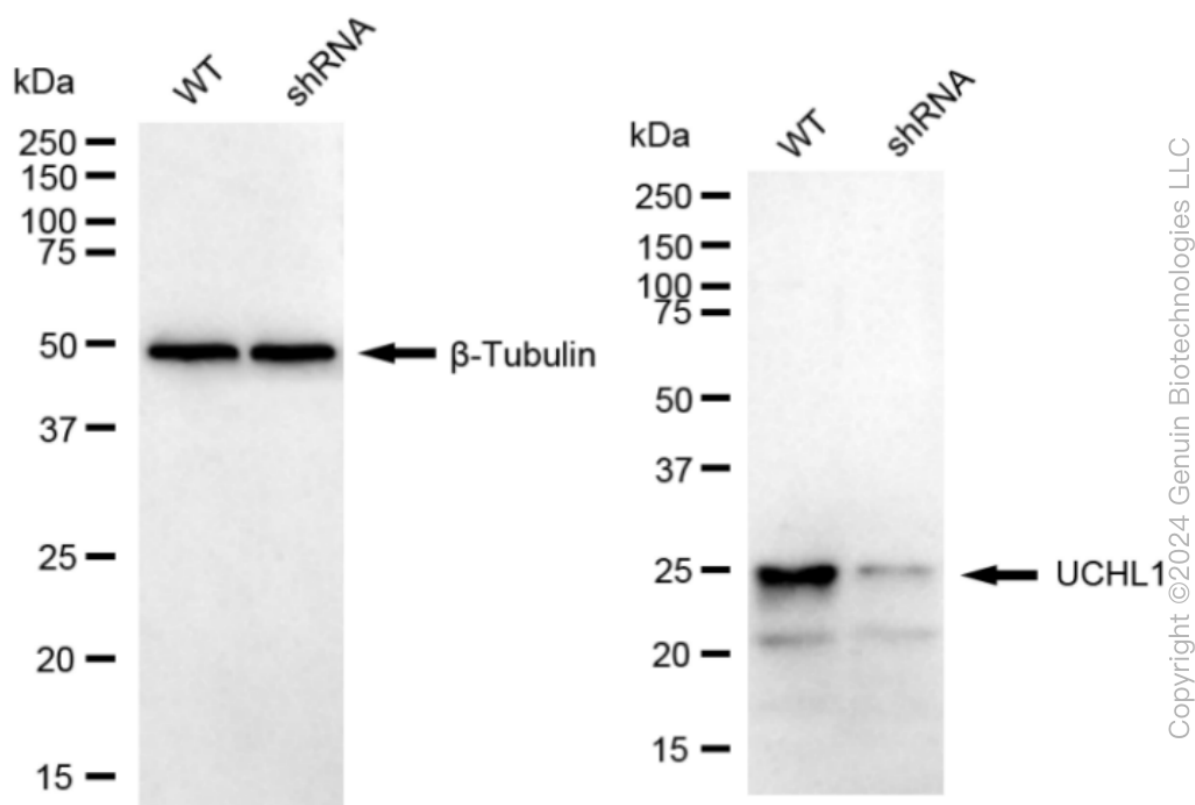
WWW.GENUINBIOTECH.COM



Immunocytochemical staining of HAP-1 cells with UCHL1 antibody (Cat#61188, 1:1,000). Nuclei were stained blue with DAPI; UCHL1 was stained magenta with Alexa Fluor® 647. Images were taken using Leica stellaris 5. Protein abundance based on laser Intensity and smart gain: Medium. Scale bar: 20 μ m.



Western blotting analysis using anti-UCHL1 antibody (Cat#61188). Total cell lysates (30 μ g) from various cell lines were loaded and separated by SDS-PAGE. The blot was incubated with anti-UCHL1 antibody (Cat#61188, 1:5,000) and HRP-conjugated goat anti-rabbit secondary antibody (Cat#201, 1:20,000) respectively. Image was developed using FeQ™ ECL Substrate Kit (Cat#226). UCHL1, ubiquitin C-terminal hydrolase L1.



Western blotting analysis using anti-UCHL1 antibody (Cat#61188). UCHL1 expression in wild-type (WT) and UCHL1 shRNA knockdown (KD) HAP1 cells with 30 µg of total cell lysates. β-Tubulin serves as a loading control. The blot was incubated with anti-UCHL1 antibody (Cat#61188, 1:2,500) and HRP-conjugated goat anti-rabbit secondary antibody (Cat#201, 1:20,000) respectively. Image was developed using NaQ™ ECL Substrate Kit (Cat#716).