

KD-Validated Anti-LEFTY1 + LEFTY2 Recombinant Rabbit Monoclonal Antibody



Catalog #: 61190

Aliases

LEFTY2; Left-Right Determination Factor 2; LEFTYA; LEFTA; TGFB4; EBAF; Endometrial Bleeding-Associated Factor; Left-Right Determination Factor A; Transforming Growth Factor Beta-4; Protein Lefty-2; Protein Lefty-A; TGF-Beta-4; Endometrial Bleeding Associated Factor (Left-Right Determination, Factor A; Transforming Growth Factor Beta Superfamily); Transforming Growth Factor, Beta-4 (Endometrial Bleeding-Associated Factor; LEFTY A)

Background

Gene Name: LEFTY2

NCBI Gene Entry: [7044](#)

UniProt Entry: [O00292](#)

Application Information

Molecular Weight: Predicted, 41 kDa, observed, 34 kDa

Clonality: Rabbit monoclonal antibody

Clone ID: 24GB6115

Species Reactivity: Human, mouse, rat

Applications Tested: Western blotting (WB), immunocytochemistry (IC)

Immunogen

A synthesized peptide derived from human LEFTY1 + LEFTY2

Isotype

Rabbit IgG

Storage Buffer

Supplied in PBS (pH 7.4) containing 50% glycerol, and 0.02% sodium azide.

Storage

Store at -20 °C for one year.

Recommended Dilutions

Western Blotting (WB): 1:1,000-1:5,000

Immunocytochemistry (IC): 1:100-1:1,000

SUPPORT

SUPPORT@GENUINBIOTECH.COM
TEL: +1-540-855-7041

ORDERS

SALES@GENUINBIOTECH.COM
FAX: +1-540-855-7041

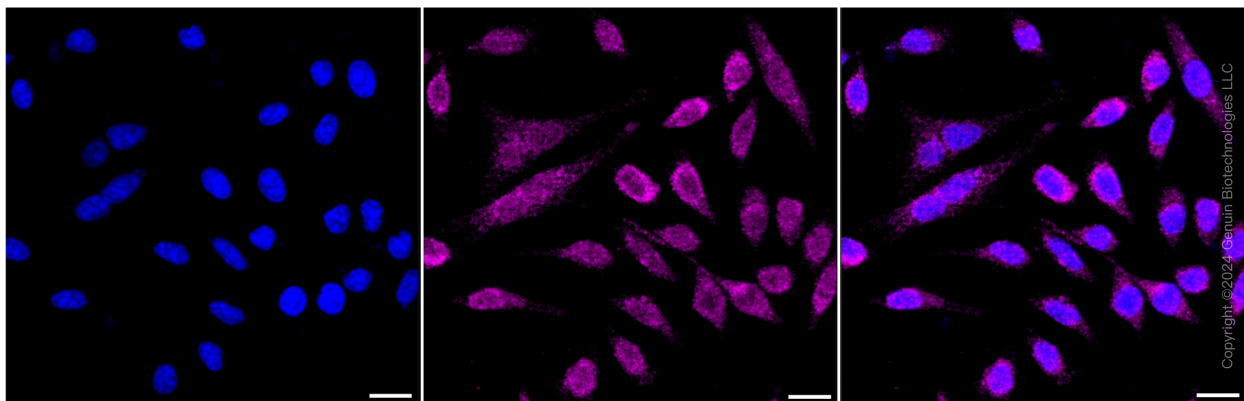
WWW.GENUINBIOTECH.COM

KD-Validated Anti-LEFTY1 + LEFTY2 Recombinant Rabbit Monoclonal Antibody

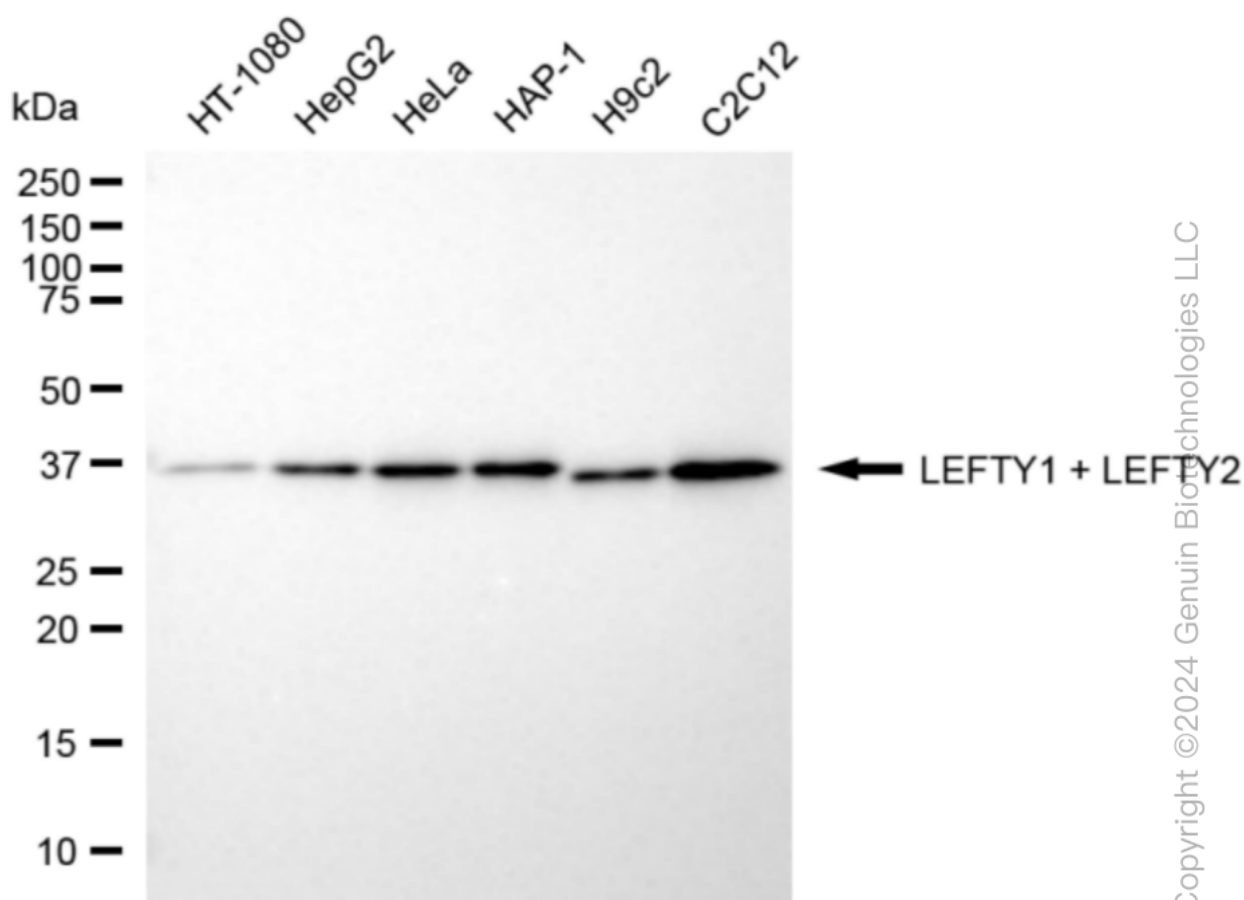
PAGE 2

Note: This product is for research use only.

Validation Data



Immunocytochemical staining of HepG2 cells with anti-LEFTY1 + LEFTY2 antibody (Cat#61190, 1:1,000). Nuclei were stained blue with DAPI; LEFTY1 + LEFTY2 was stained magenta with Alexa Fluor® 647. Images were taken using Leica stellaris 5. Protein abundance based on laser Intensity and smart gain: Low. Scale bar: 20 μ m.



SUPPORT

SUPPORT@GENUINBIOTECH.COM
TEL: +1-540-855-7041

ORDERS

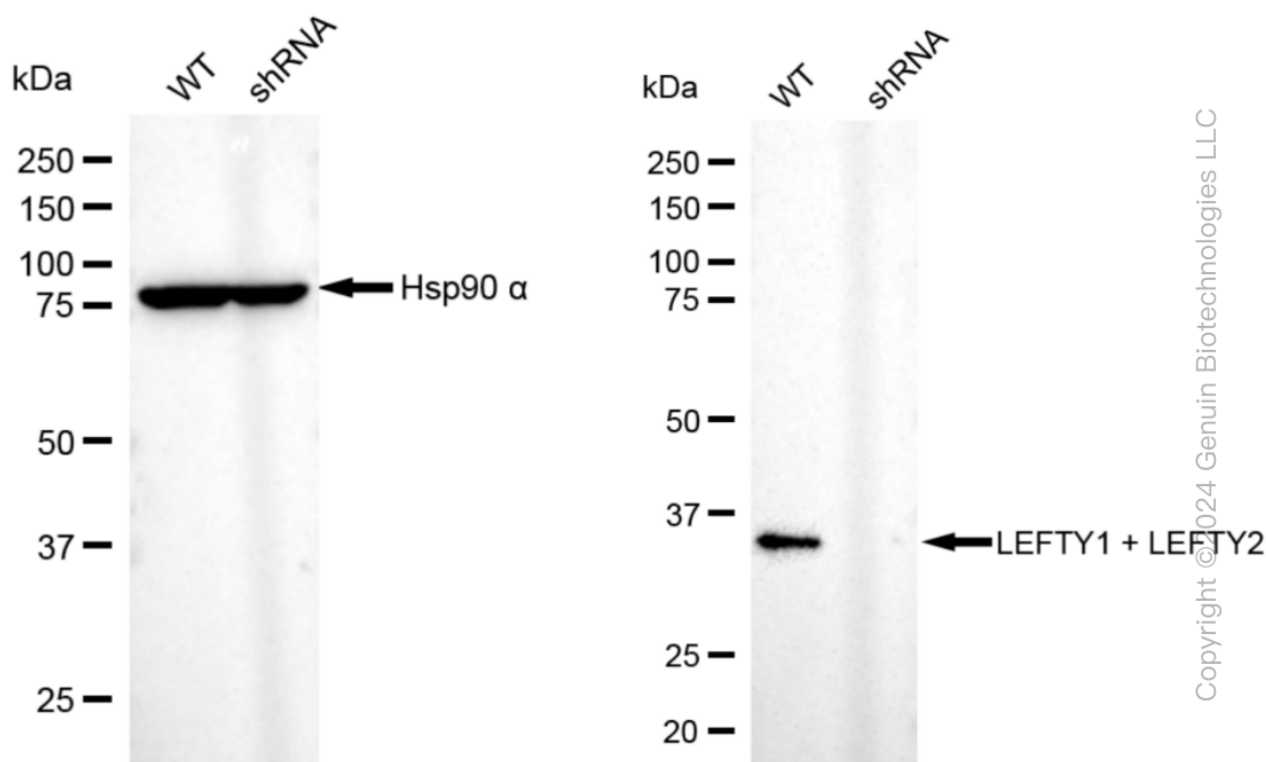
SALES@GENUINBIOTECH.COM
FAX: +1-540-855-7041

WWW.GENUINBIOTECH.COM

KD-Validated Anti-LEFTY1 + LEFTY2 Recombinant Rabbit Monoclonal Antibody

PAGE 3

Western blotting analysis using anti-LEFTY1 + LEFTY2 antibody (Cat#61190). Total cell lysates (30 µg) from various cell lines were loaded and separated by SDS-PAGE. The blot was incubated with anti-LEFTY1 + LEFTY2 antibody (Cat#61190, 1:5,000) and HRP-conjugated goat anti-rabbit secondary antibody (Cat#201, 1:20,000) respectively. Image was developed using FeQ™ ECL Substrate Kit (Cat#226).



Western blotting analysis using anti-LEFTY1 + LEFTY2 antibody (Cat#61190). LEFTY1 + LEFTY2 expression in wild type (WT) and LEFTY1 + LEFTY2 shRNA knockdown (KD) HT-1080 cells with 20 µg of total cell lysates. Hsp90 α serves as a loading control. The blot was incubated with anti-LEFTY1 + LEFTY2 antibody (Cat#61190, 1:5,000) and HRP-conjugated goat anti-rabbit secondary antibody (Cat#201, 1:20,000) respectively. Image was developed using NaQ™ ECL Substrate Kit (Cat#716).

SUPPORT

SUPPORT@GENUINBIOTECH.COM
TEL: +1-540-855-7041

ORDERS

SALES@GENUINBIOTECH.COM
FAX: +1-540-855-7041

WWW.GENUINBIOTECH.COM