

KD-Validated Anti-Peptidylprolyl isomerase F Recombinant Rabbit Monoclonal Antibody



Catalog #: 61192

Aliases

PPIF; Peptidylprolyl Isomerase F; Cyclophilin D; CypD; Peptidyl-Prolyl Cis-Trans Isomerase F, Mitochondrial; Mitochondrial Cyclophilin; Cyclophilin F; Rotamase F; EC 5.2.1.8; PPIase F; Cyp-D; CyP-M; CYP3; Peptidyl-Prolyl Cis-Trans Isomerase, Mitochondrial; Peptidylprolyl Isomerase F (Cyclophilin F; Cyclophilin 3; HCyP3; CYP-D; HCYP3; CyP-D; CYPD

Background

Gene Name: PPIF

NCBI Gene Entry: [10105](#)

UniProt Entry: [P30405](#)

Application Information

Molecular Weight: Predicted, 22 kDa, observed, 18 kDa

Clonality: Rabbit monoclonal antibody

Clone ID: 23GB2140

Species Reactivity: Human, mouse, rat

Applications Tested: Western blotting (WB), flow cytometry (FCM), immunocytochemistry (IC)

Immunogen

A synthesized peptide derived from human Cyclophilin F

Isotype

Rabbit IgG

Storage Buffer

Supplied in PBS (pH 7.4) containing 50% glycerol, and 0.02% sodium azide.

Storage

Store at -20 °C for one year.

Recommended Dilutions

Western Blotting (WB): 1:1,000-1:5,000

Flow Cytometry (FCM): 1:2,000

Immunocytochemistry (IC): 1:100-1:1,000

SUPPORT

SUPPORT@GENUINBIOTECH.COM
TEL: +1-540-855-7041

ORDERS

SALES@GENUINBIOTECH.COM
FAX: +1-540-855-7041

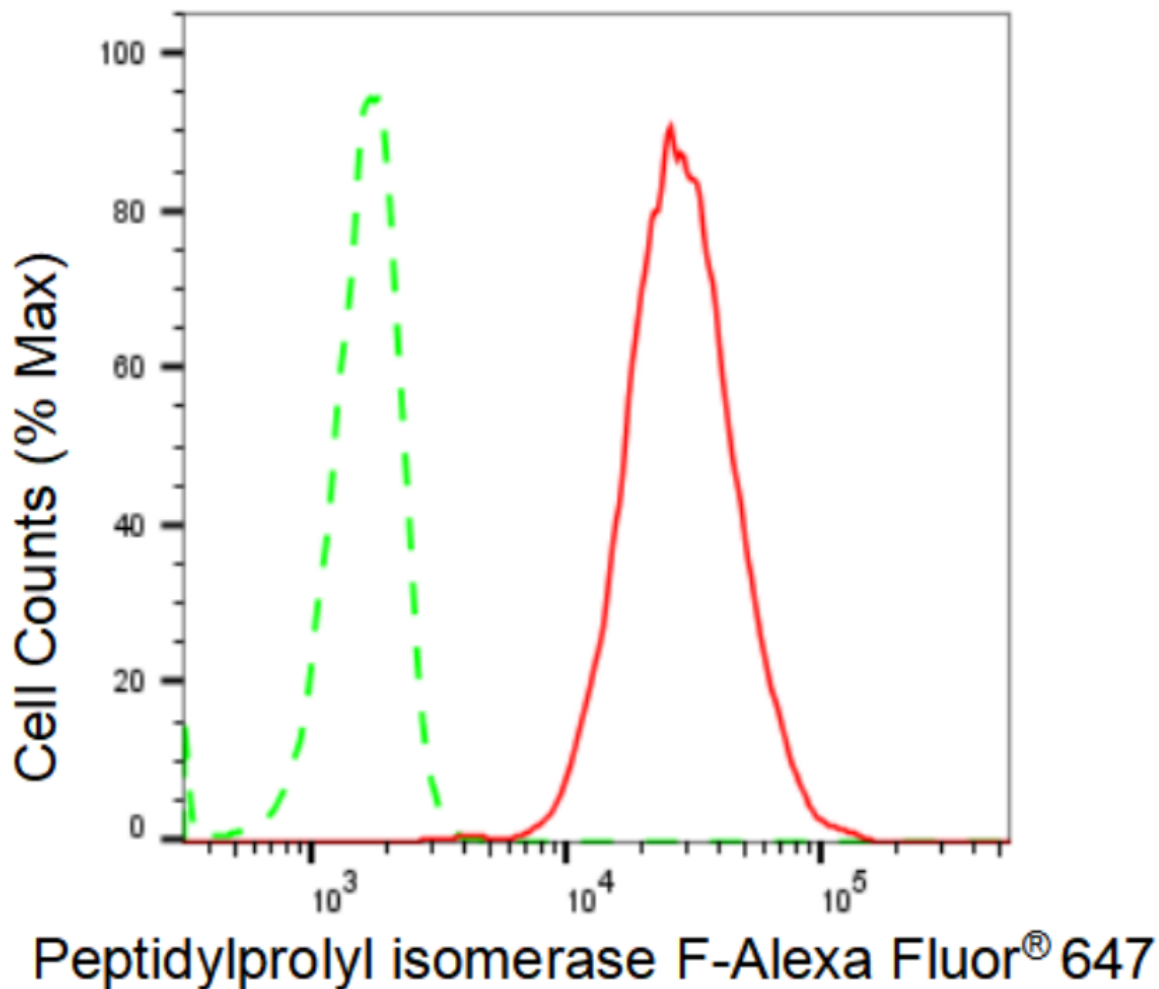
WWW.GENUINBIOTECH.COM

KD-Validated Anti-Peptidylprolyl isomerase F Recombinant Rabbit Monoclonal Antibody

PAGE 2

Note: This product is for research use only.

Validation Data



Copyright ©2024 Genuin Biotechnologies LLC

Flow cytometric analysis of Peptidylprolyl isomerase F expression in C2C12 cells using Peptidylprolyl isomerase F antibody (Cat#61192, 1:2,000). Green, isotype control; red, Peptidylprolyl isomerase F.

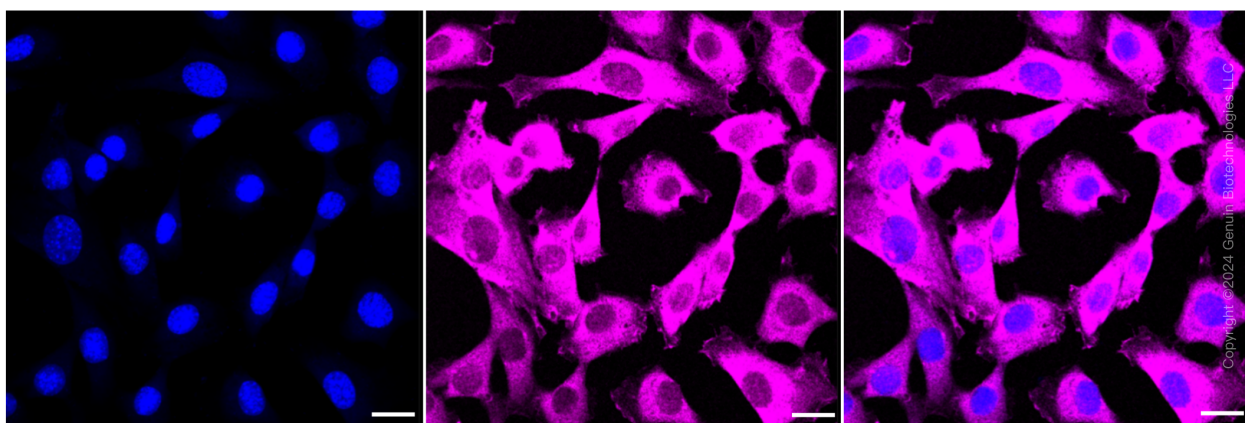
SUPPORT

SUPPORT@GENUINBIOTECH.COM
TEL: +1-540-855-7041

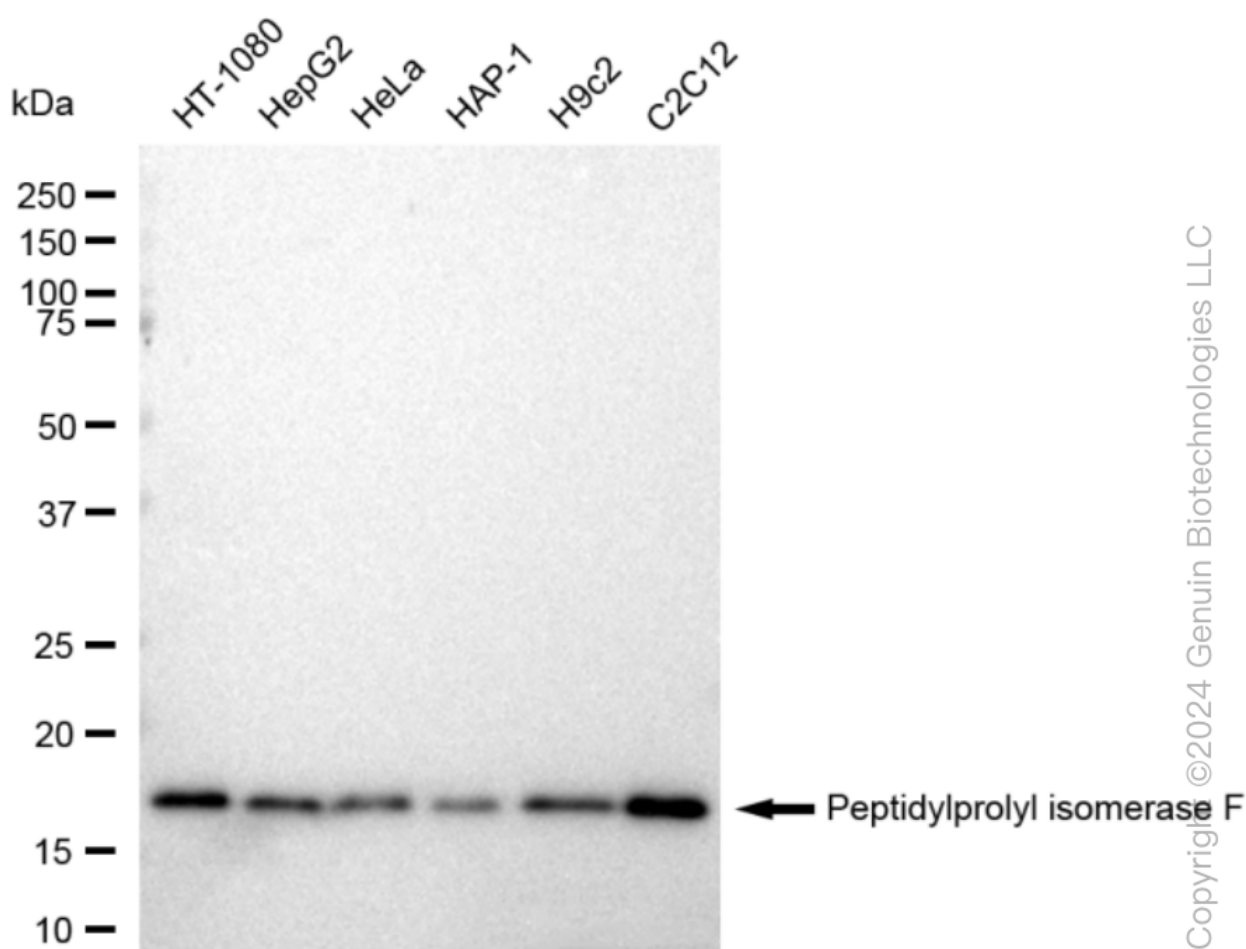
ORDERS

SALES@GENUINBIOTECH.COM
FAX: +1-540-855-7041

WWW.GENUINBIOTECH.COM



Immunocytochemical staining of C2C12 cells with Peptidylprolyl isomerase F antibody (Cat#61192, 1:1,000). Nuclei were stained blue with DAPI; Peptidylprolyl isomerase F was stained magenta with Alexa Fluor® 647. Images were taken using Leica stellaris 5. Protein abundance based on laser Intensity and smart gain: High. Scale bar: 20 μ m.

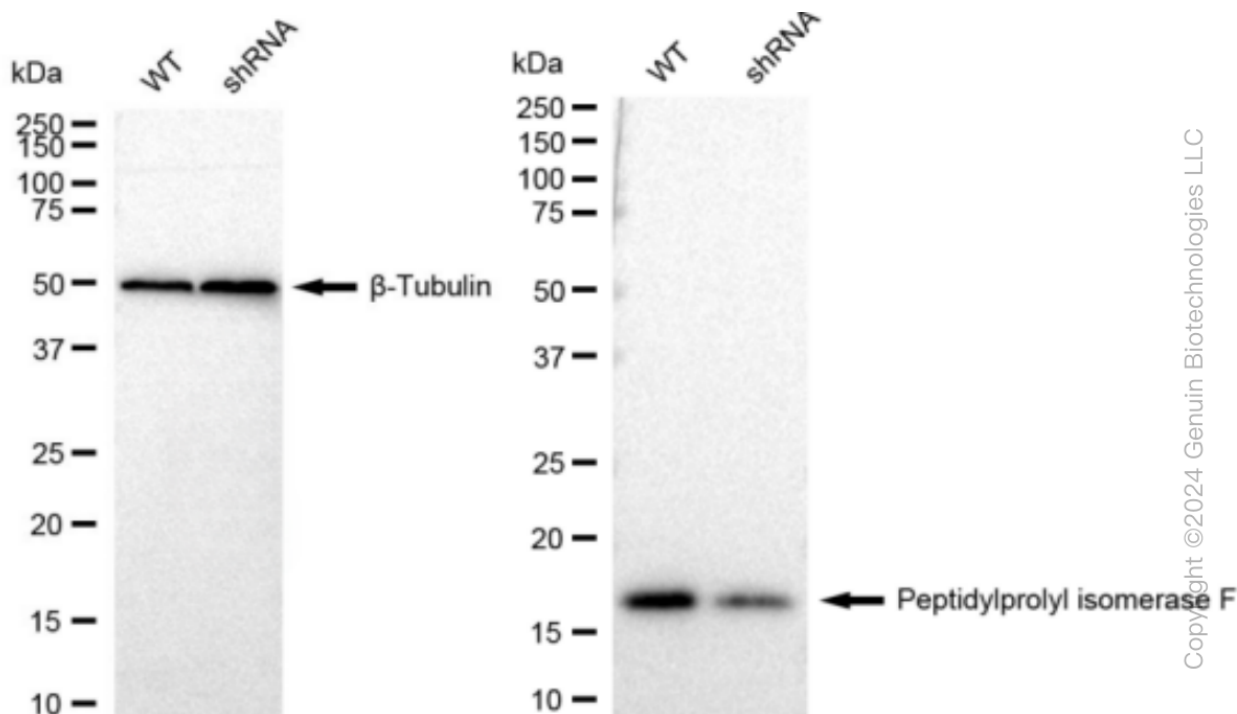


Western blotting analysis using anti-Peptidylprolyl isomerase F antibody (Cat#61192). Total cell lysates (30 μ g) from various cell lines were loaded and separated by SDS-PAGE. The blot was

KD-Validated Anti-Peptidylprolyl isomerase F Recombinant Rabbit Monoclonal Antibody

PAGE 4

incubated with anti-Peptidylprolyl isomerase F antibody (Cat#61192, 1:5,000) and HRP-conjugated goat anti-rabbit secondary antibody (Cat#201, 1:20,000) respectively. Image was developed using FeQ™ ECL Substrate Kit (Cat#226).



Western blotting analysis using anti-Peptidylprolyl isomerase F antibody (Cat#61192). Peptidylprolyl isomerase F expression in wild type (WT) and peptidylprolyl isomerase F shRNA knockdown (KD) HeLa cells with 30 μ g of total cell lysates. β -Tubulin serves as a loading control. The blot was incubated with anti-Peptidylprolyl isomerase F antibody (Cat#61192, 1:5,000) and HRP-conjugated goat anti-rabbit secondary antibody (Cat#201, 1:20,000) respectively. Image was developed using FeQ™ ECL Substrate Kit (Cat#226).

SUPPORT

SUPPORT@GENUINBIOTECH.COM
TEL: +1-540-855-7041

ORDERS

SALES@GENUINBIOTECH.COM
FAX: +1-540-855-7041

WWW.GENUINBIOTECH.COM