

KD-Validated Anti-NDUFS3 Recombinant Rabbit Monoclonal Antibody



Catalog #: 61193

Aliases

NDUFS3; NADH:Ubiquinone Oxidoreductase Core Subunit S3; NADH Dehydrogenase [Ubiquinone] Iron-Sulfur Protein 3, Mitochondrial; CI-30; NADH Dehydrogenase (Ubiquinone) Fe-S Protein 3, 30kDa (NADH-Coenzyme Q Reductase); NADH-Ubiquinone Oxidoreductase 30 KDa Subunit; Complex I 30kDa Subunit; Complex I-30kD; CI-30kD; NADH Dehydrogenase (Ubiquinone) Fe-S Protein 3 (30kD) (NADH-Coenzyme Q Reductase); NADH Dehydrogenase-Ubiquinone 30 KDa Subunit; EC 1.6.99.5; EC 7.1.1.2; MC1DN8

Background

Gene Name: NDUFS3

NCBI Gene Entry: [4722](#)

UniProt Entry: [O75489](#)

Application Information

Molecular Weight: Predicted, 30 kDa, observed, 26 kDa

Clonality: Rabbit monoclonal antibody

Clone ID: 23GB2145

Species Reactivity: Human

Applications Tested: Western blotting (WB), flow cytometry (FCM), immunocytochemistry (IC)

Immunogen

A synthesized peptide derived from human NDUFS3

Isotype

Rabbit IgG

Storage Buffer

Supplied in PBS (pH 7.4) containing 50% glycerol, and 0.02% sodium azide.

Storage

Store at -20 °C for one year.

Recommended Dilutions

Western Blotting (WB): 1:1,000-1:5,000

Flow Cytometry (FCM): 1:2,000

Immunocytochemistry (IC): 1:100-1:1,000

SUPPORT

SUPPORT@GENUINBIOTECH.COM
TEL: +1-540-855-7041

ORDERS

SALES@GENUINBIOTECH.COM
FAX: +1-540-855-7041

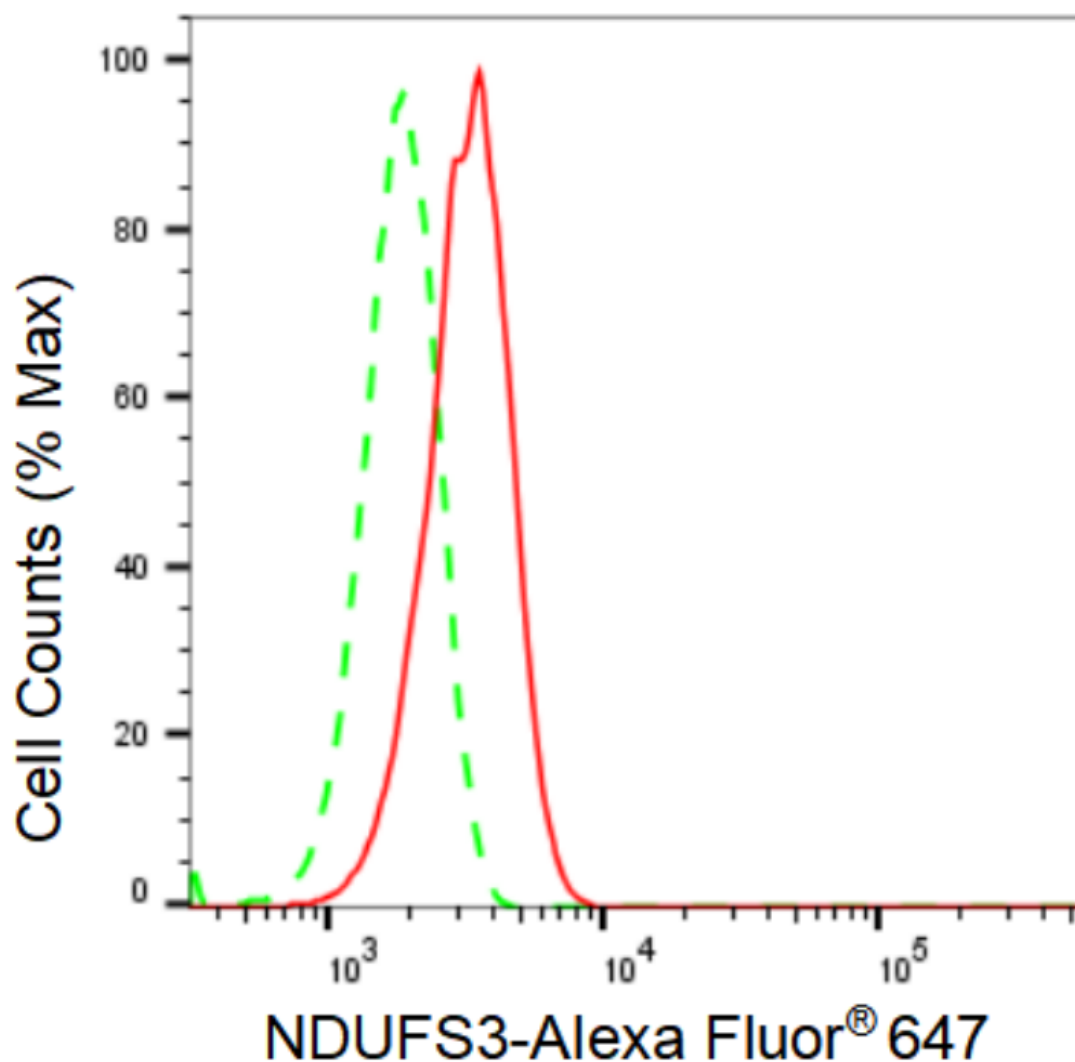
WWW.GENUINBIOTECH.COM

KD-Validated Anti-NDUFS3 Recombinant Rabbit Monoclonal Antibody

PAGE 2

Note: This product is for research use only.

Validation Data



Copyright ©2024 Genuin Biotechnologies LLC

Flow cytometric analysis of NDUFS3 expression in HepG2 cells using NDUFS3 antibody (Cat#61193, 1:2,000). Green, isotype control; red, NDUFS3.

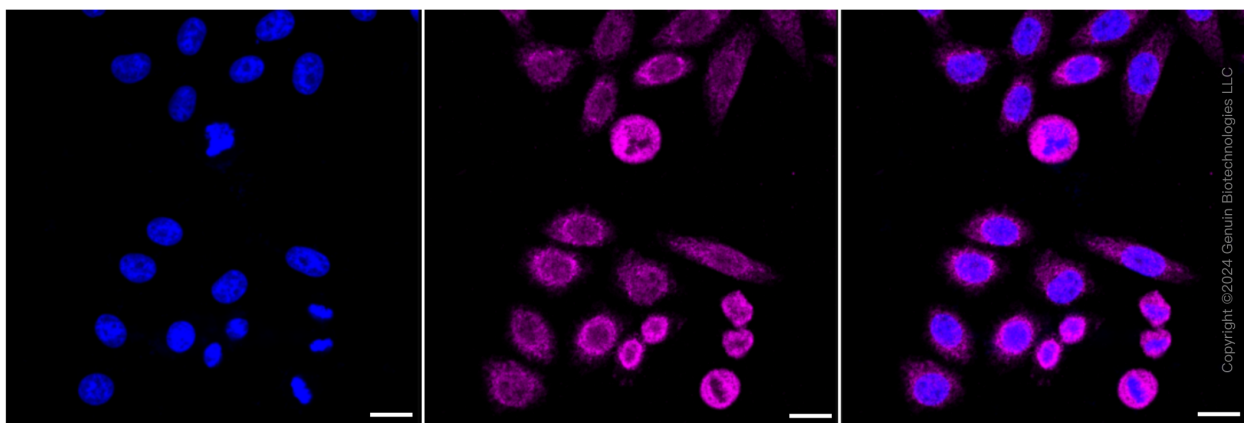
SUPPORT

SUPPORT@GENUINBIOTECH.COM
TEL: +1-540-855-7041

ORDERS

SALES@GENUINBIOTECH.COM
FAX: +1-540-855-7041

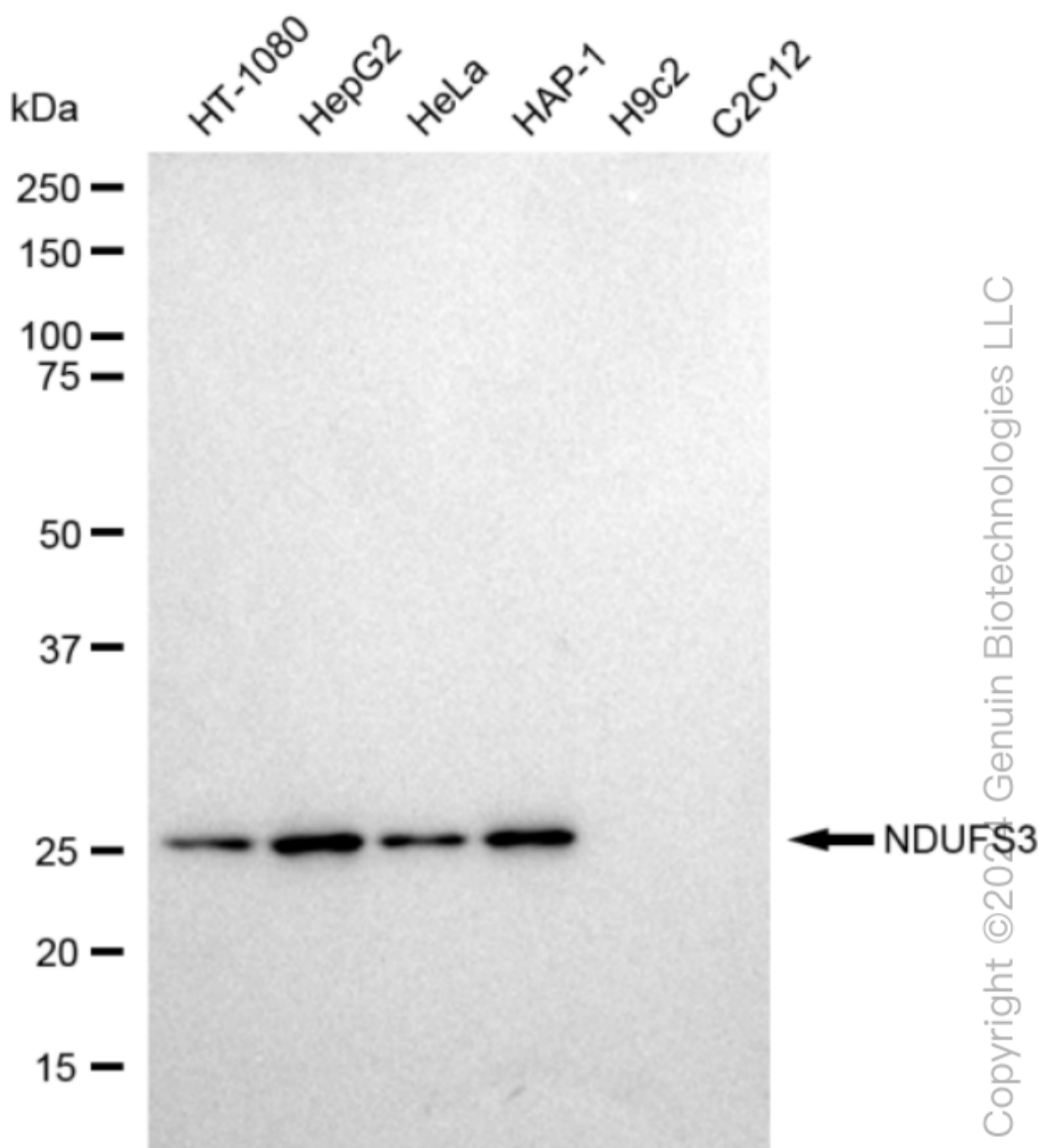
WWW.GENUINBIOTECH.COM



Immunocytochemical staining of HepG2 cells with NDUFS3 antibody (Cat#61193, 1:1,000). Nuclei were stained blue with DAPI; NDUFS3 was stained magenta with Alexa Fluor® 647. Images were taken using Leica stellaris 5. Protein abundance based on laser Intensity and smart gain: Medium. Scale bar: 20 μ m.

KD-Validated Anti-NDUFS3 Recombinant Rabbit Monoclonal Antibody

PAGE 4



Western blotting analysis using anti-NDUFS3 antibody (Cat#61193). Total cell lysates (30 μ g) from various cell lines were loaded and separated by SDS-PAGE. The blot was incubated with anti-NDUFS3 antibody (Cat#61193, 1:5,000) and HRP-conjugated goat anti-rabbit secondary antibody (Cat#201, 1:20,000) respectively. Image was developed using FeQ™ ECL Substrate Kit (Cat#226).

SUPPORT

SUPPORT@GENUINBIOTECH.COM
TEL: +1-540-855-7041

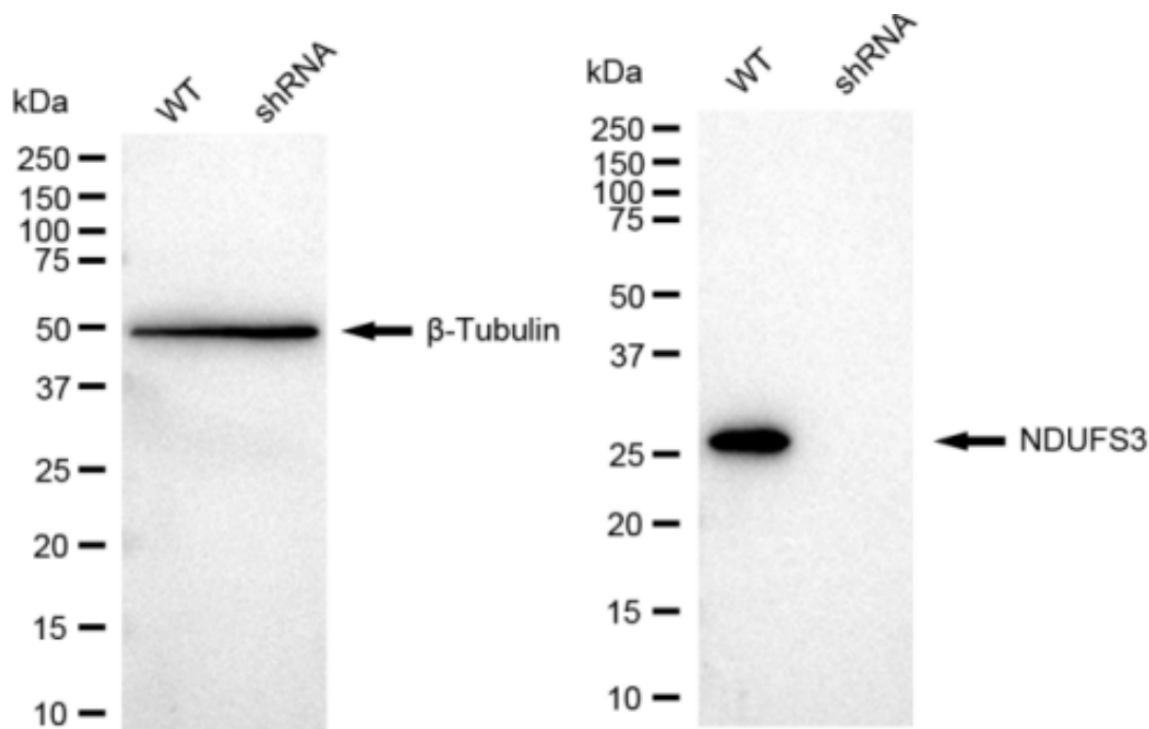
ORDERS

SALES@GENUINBIOTECH.COM
FAX: +1-540-855-7041

WWW.GENUINBIOTECH.COM

KD-Validated Anti-NDUFS3 Recombinant Rabbit Monoclonal Antibody

PAGE 5



Western blotting analysis using anti-NDUFS3 antibody (Cat#61193). NDUFS3 expression in wild type (WT) and NDUFS3 shRNA knockdown (KD) HeLa cells with 30 μ g of total cell lysates. β -Tubulin serves as a loading control. The blot was incubated with anti-NDUFS3 antibody (Cat#61193, 1:5,000) and HRP-conjugated goat anti-rabbit secondary antibody (Cat#201, 1:20,000) respectively. Image was developed using FeQ™ ECL Substrate Kit (Cat#226).

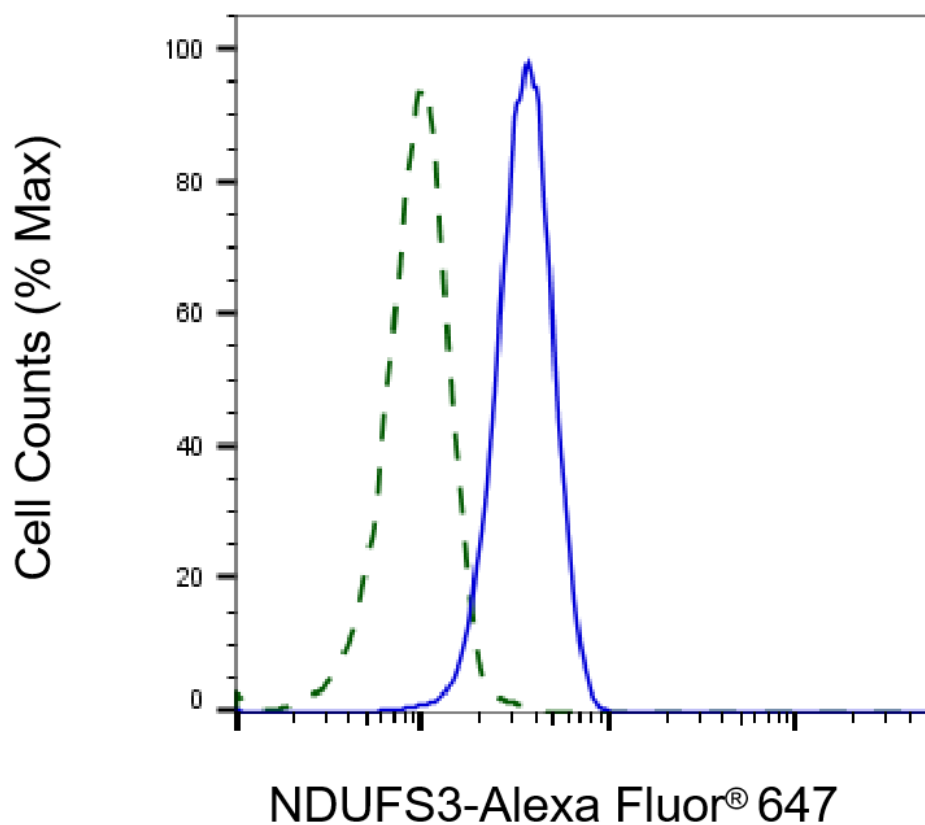
SUPPORT

SUPPORT@GENUINBIOTECH.COM
TEL: +1-540-855-7041

ORDERS

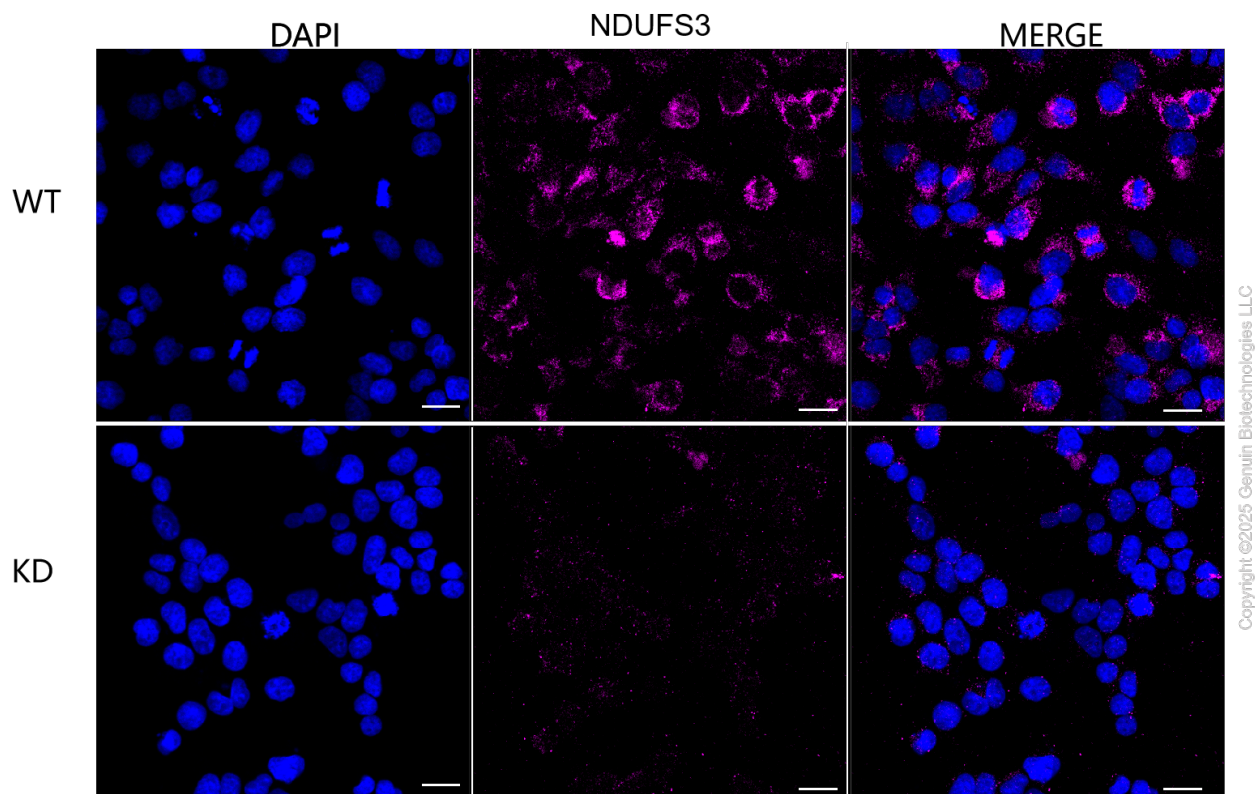
SALES@GENUINBIOTECH.COM
FAX: +1-540-855-7041

WWW.GENUINBIOTECH.COM



Copyright ©2025 Genuin Biotechnologies LLC

Validation of NDUFS3 knockdown using flow cytometry. Wild-type(WT, Blue) and knockdown(KD, Green) HeLa cells were stained with anti-NDUFS3 antibody (Cat#61193, 1:2,000) and analyzed using CytoFLEX.



Immunocytochemical staining of HeLa cells using anti-NDUFS3 antibody (Cat#61193, 1:1,000), Top panel: wild-type (WT); Bottom panel: NDUFS3 shRNA knockdown (KD). Nuclei were stained blue with DAPI; NDUFS3 was stained magenta with Alexa Fluor® 647. Scale bar, 20 μ m. Permeabilization: Triton.