

# KD-Validated Anti-MRAS Recombinant Rabbit Monoclonal Antibody



**Catalog #: 61194**

## Aliases

MRAS; Muscle RAS Oncogene Homolog; RRAS3; R-RAS3; Ras-Related Protein R-Ras3; Ras-Related Protein M-Ras; M-RAS; Muscle And Microspikes RAS; EC 3.6.5.2; M-RAS; NS11

## Background

Gene Name: MRAS

NCBI Gene Entry: [22808](#)

UniProt Entry: [O14807](#)

## Application Information

Molecular Weight: Predicted, 24 kDa, observed, 24 kDa

Clonality: Rabbit monoclonal antibody

Clone ID: 23GB2150

Species Reactivity: Human, mouse, rat

Applications Tested: Western blotting (WB), flow cytometry (FCM), immunocytochemistry (IC)

## Immunogen

A synthesized peptide derived from human Mras

## Isotype

Rabbit IgG

## Storage Buffer

Supplied in PBS (pH 7.4) containing 50% glycerol, and 0.02% sodium azide.

## Storage

Store at -20 °C for one year.

## Recommended Dilutions

Western Blotting (WB): 1:1,000-1:5,000

Flow Cytometry (FCM): 1:2,000

Immunocytochemistry (IC): 1:100-1:1,000

**Note:** This product is for research use only.

## Validation Data

---

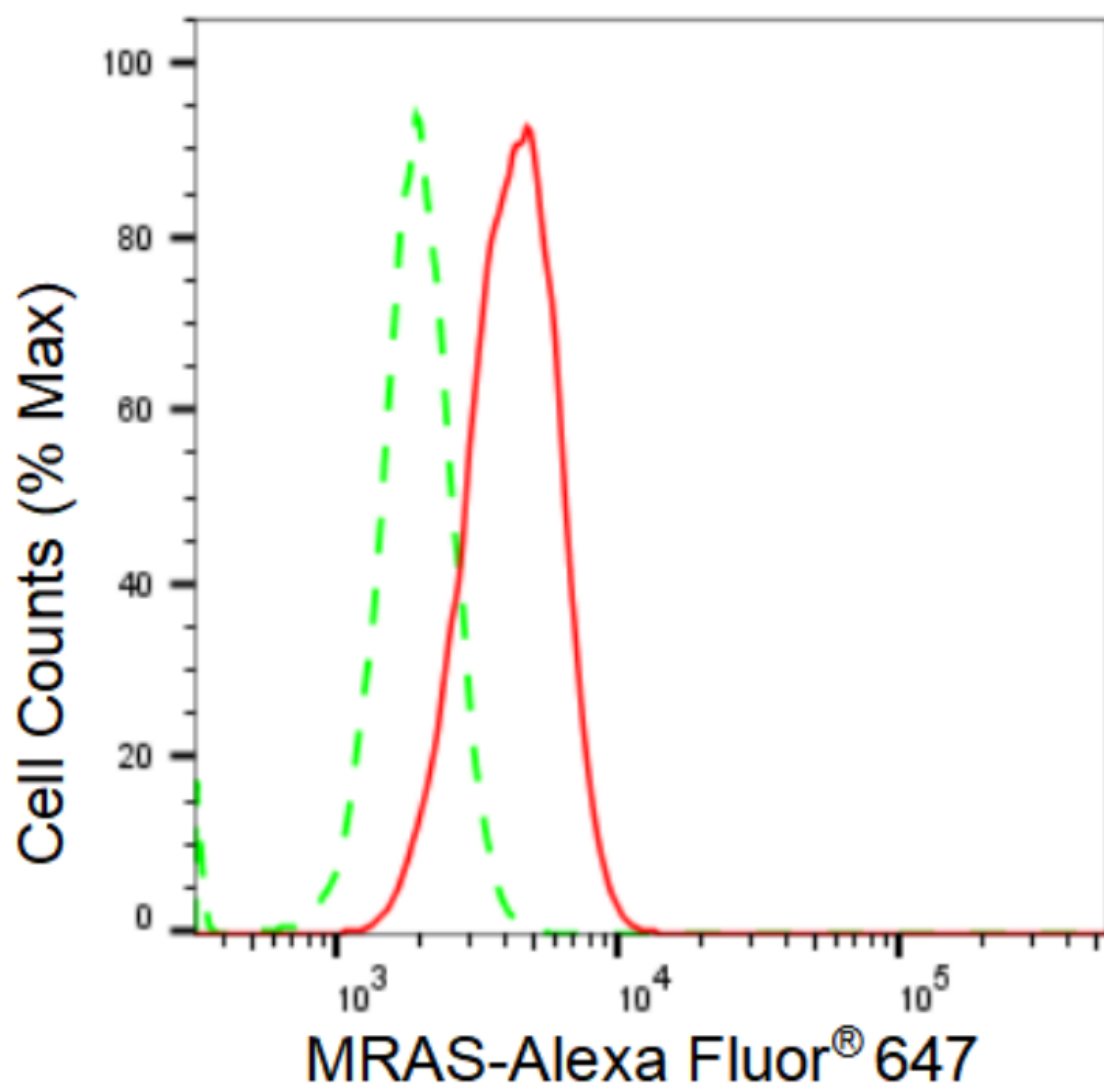
### SUPPORT

SUPPORT@GENUINBIOTECH.COM  
TEL: +1-540-855-7041

### ORDERS

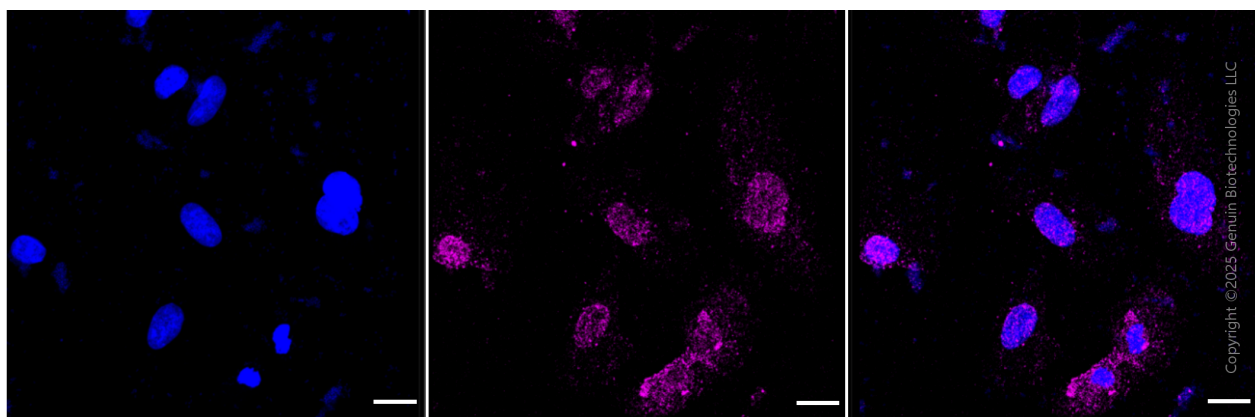
SALES@GENUINBIOTECH.COM  
FAX: +1-540-855-7041

[WWW.GENUINBIOTECH.COM](http://WWW.GENUINBIOTECH.COM)



Copyright ©2024 Genuin Biotechnologies LLC

Flow cytometric analysis of MRAS expression in H9c2 cells using MRAS antibody (Cat#61194, 1:2,000). Green, isotype control; red, MRAS.



Immunocytochemical staining of H9C2 cells with anti-MRAS antibody (Cat #61194, 1:1,000) .

**SUPPORT**

SUPPORT@GENUINBIOTECH.COM  
TEL: +1-540-855-7041

**ORDERS**

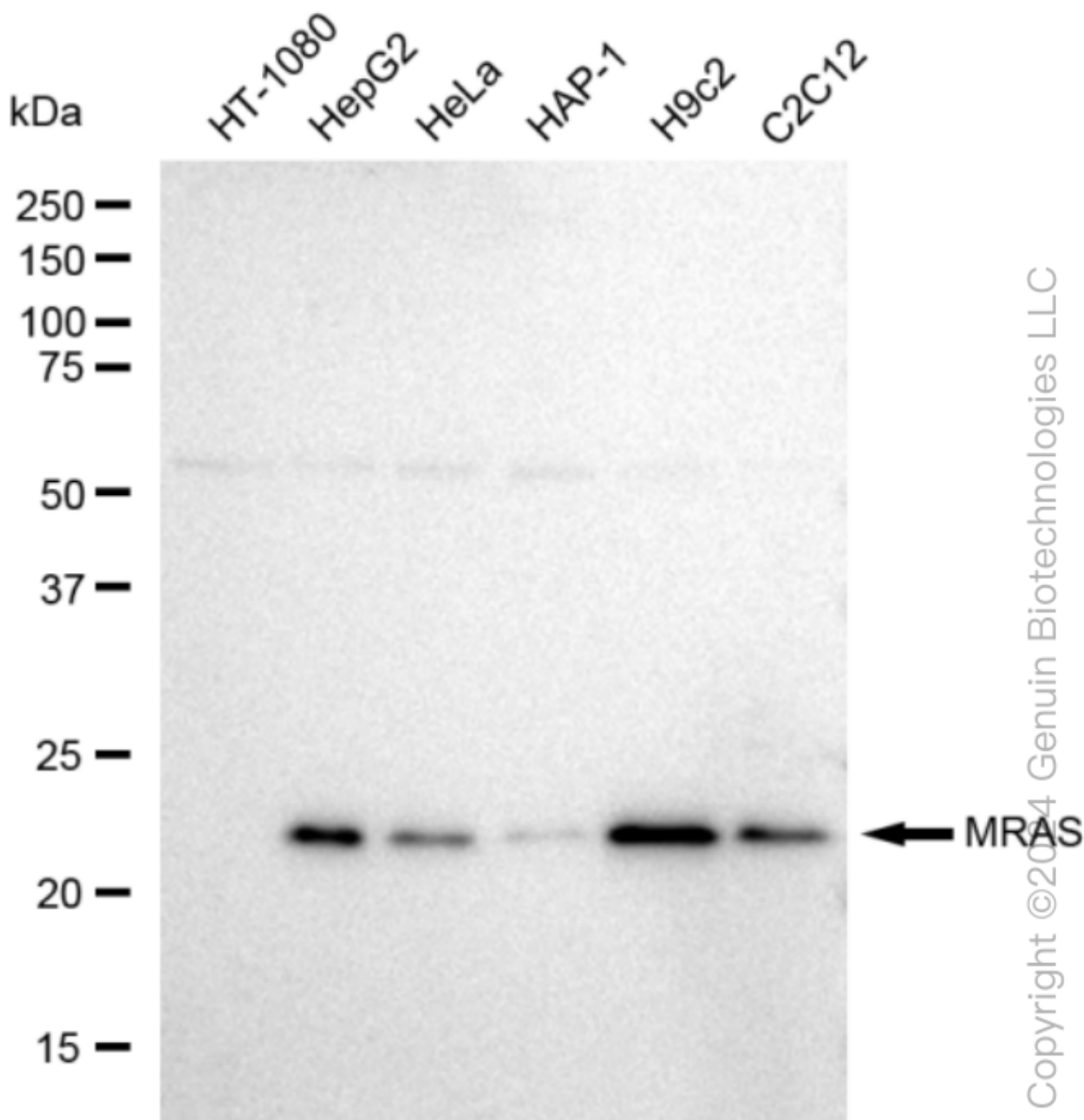
SALES@GENUINBIOTECH.COM  
FAX: +1-540-855-7041

**WWW.GENUINBIOTECH.COM**

## KD-Validated Anti-MRAS Recombinant Rabbit Monoclonal Antibody

PAGE 3

Nuclei were stained blue with DAPI; MRAS was stained magenta with Alexa Fluor® 647. Images were taken using Leica stellaris 5. Protein abundance based on laser Intensity and smart gain: Medium. Scale bar, 20 µm.



Western blotting analysis using anti-MRAS antibody (Cat#61194). Total cell lysates (30 µg) from various cell lines were loaded and separated by SDS-PAGE. The blot was incubated with anti-NDUFS3 antibody (Cat#61194, 1:5,000) and HRP-conjugated goat anti-rabbit secondary antibody (Cat#201, 1:20,000) respectively. Image was developed using FeQ™ ECL Substrate Kit (Cat#226).

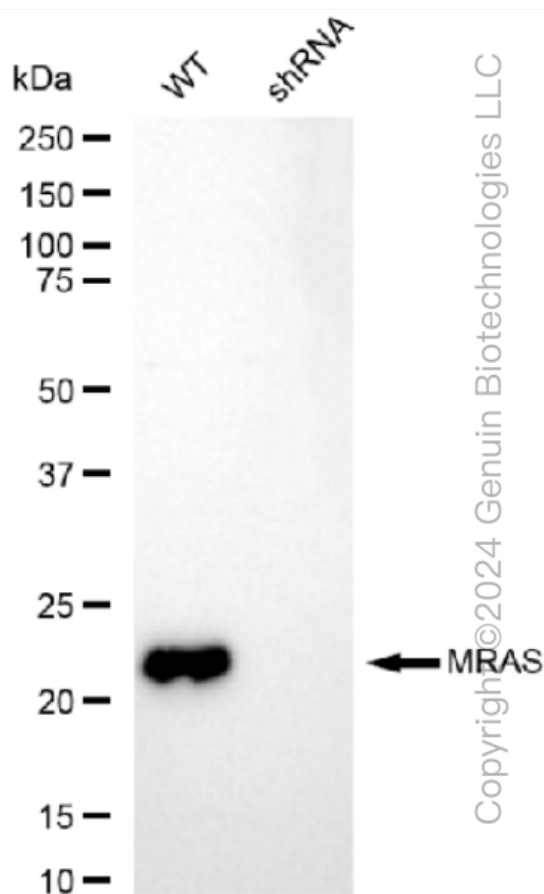
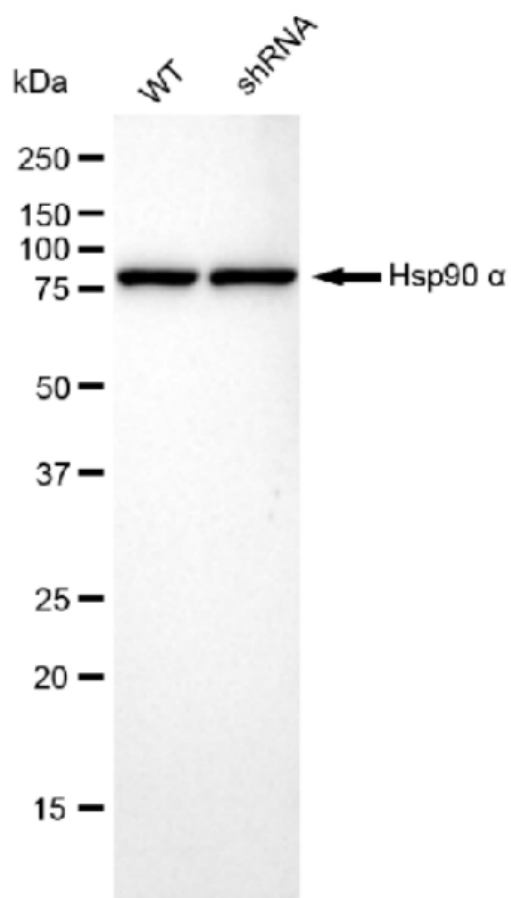
### SUPPORT

SUPPORT@GENUINBIOTECH.COM  
TEL: +1-540-855-7041

### ORDERS

SALES@GENUINBIOTECH.COM  
FAX: +1-540-855-7041

WWW.GENUINBIOTECH.COM



Western blotting analysis using anti-MRAS antibody (Cat#61194). MRAS expression in wild type (WT) and MRAS shRNA knockdown (KD) HeLa cells with 30 µg of total cell lysates. β-Tubulin serves as a loading control. The blot was incubated with anti-MRAS antibody (Cat#61194, 1:5,000) and HRP-conjugated goat anti-rabbit secondary antibody (Cat#201, 1:20,000) respectively. Image was developed using FeQ™ ECL Substrate Kit (Cat#226).