

KD-Validated Anti-IMPDH2 Recombinant Rabbit Monoclonal Antibody



Catalog #: 61198

Aliases

IMPDH2; Inosine Monophosphate Dehydrogenase 2; IMP (Inosine 5'-Monophosphate) Dehydrogenase 2; Inosine-5'-Monophosphate Dehydrogenase Type II; Inosine-5'-Monophosphate Dehydrogenase 2; IMP Dehydrogenase II; EC 1.1.1.205; IMPDH-II; IMPDH 2; IMPD 2; IMPD2; IMP (Inosine Monophosphate) Dehydrogenase 2; Inosine Monophosphate Dehydrogenase Type II; Epididymis Secretory Sperm Binding Protein; Inosine 5' Phosphate Dehydrogenase 2; IMP Dehydrogenase 2; IMP Oxireductase 2

Background

Gene Name: IMPDH2

NCBI Gene Entry: [3615](#)

UniProt Entry: [P12268](#)

Application Information

Molecular Weight: Predicted, 56 kDa, observed, 56 kDa

Clonality: Rabbit monoclonal antibody

Clone ID: 24GB6135

Species Reactivity: Human, mouse, rat

Applications Tested: Western blotting (WB), flow cytometry (FCM), immunocytochemistry (IC)

Immunogen

A synthesized peptide derived from human IMPDH2

Isotype

Rabbit IgG

Storage Buffer

Supplied in PBS (pH 7.4) containing 50% glycerol, and 0.02% sodium azide.

Storage

Store at -20 °C for one year.

Recommended Dilutions

Western Blotting (WB): 1:1,000-1:5,000

Flow Cytometry (FCM): 1:2,000

Immunocytochemistry (IC): 1:100-1:1,000

SUPPORT

SUPPORT@GENUINBIOTECH.COM
TEL: +1-540-855-7041

ORDERS

SALES@GENUINBIOTECH.COM
FAX: +1-540-855-7041

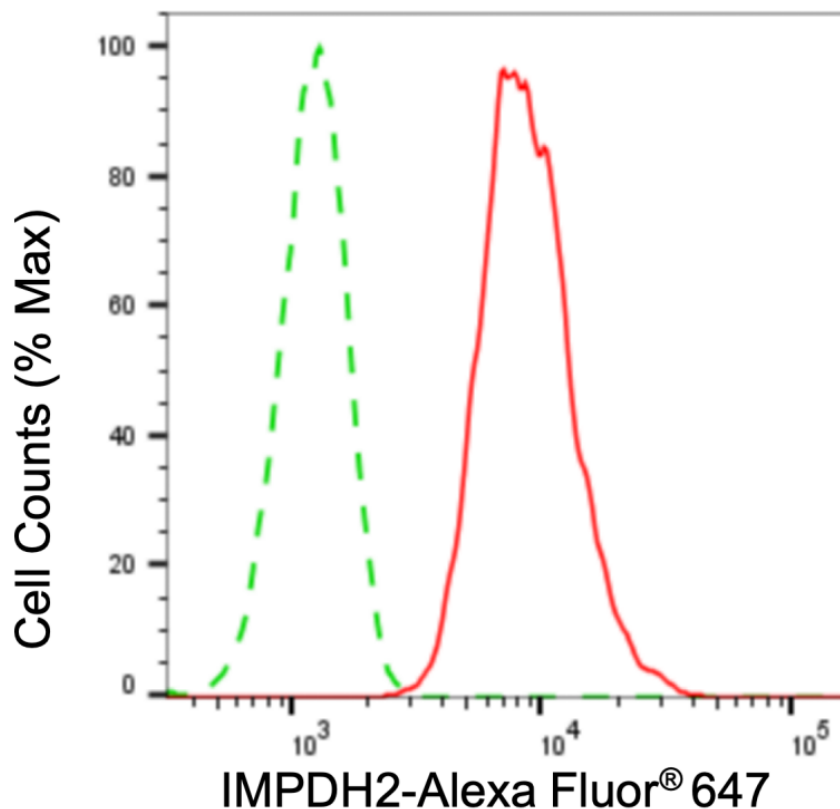
WWW.GENUINBIOTECH.COM

KD-Validated Anti-IMPDH2 Recombinant Rabbit Monoclonal Antibody

PAGE 2

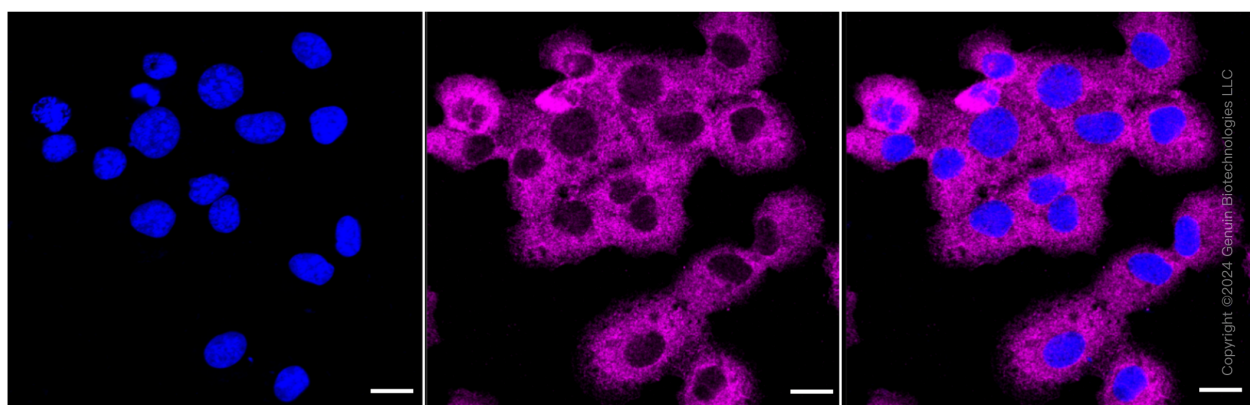
Note: This product is for research use only.

Validation Data



Copyright ©2024 Genuin Biotechnologies LLC

Flow cytometric analysis of IMPDH2 expression in HT-1080 cells using IMPDH2 antibody (Cat#61198, 1:2,000). Green, isotype control; red, IMPDH2.



Copyright ©2024 Genuin Biotechnologies LLC

Immunocytochemical staining of HT-1080 cells with anti-IMPDH2 antibody (Cat#61198, 1:1,000). Nuclei were stained blue with DAPI; IMPDH2 was stained magenta with Alexa Fluor® 647. Images were taken using Leica stellaris 5. Protein abundance based on laser Intensity and smart gain: Medium. Scale bar: 20 μ m.

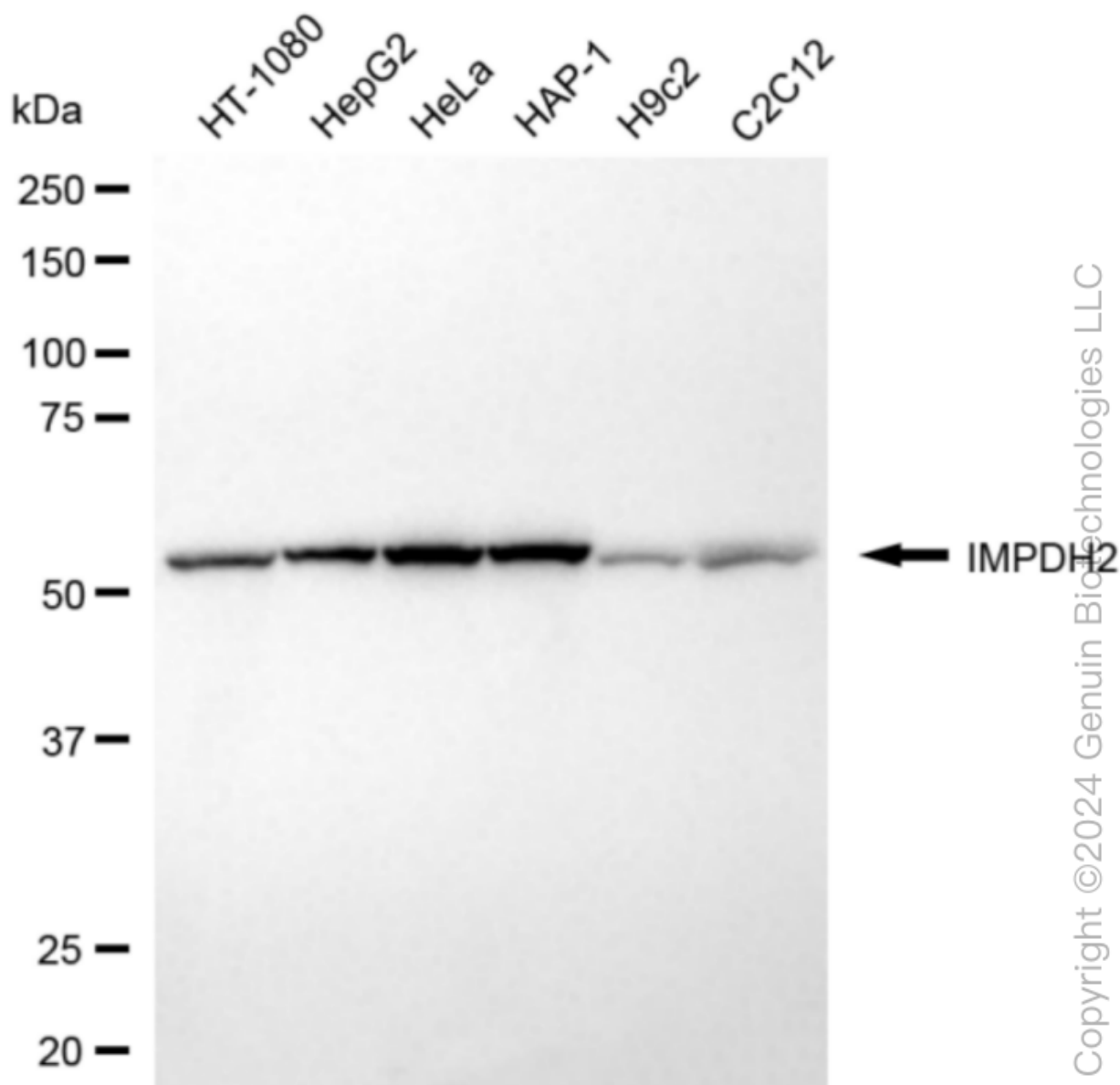
SUPPORT

SUPPORT@GENUINBIOTECH.COM
TEL: +1-540-855-7041

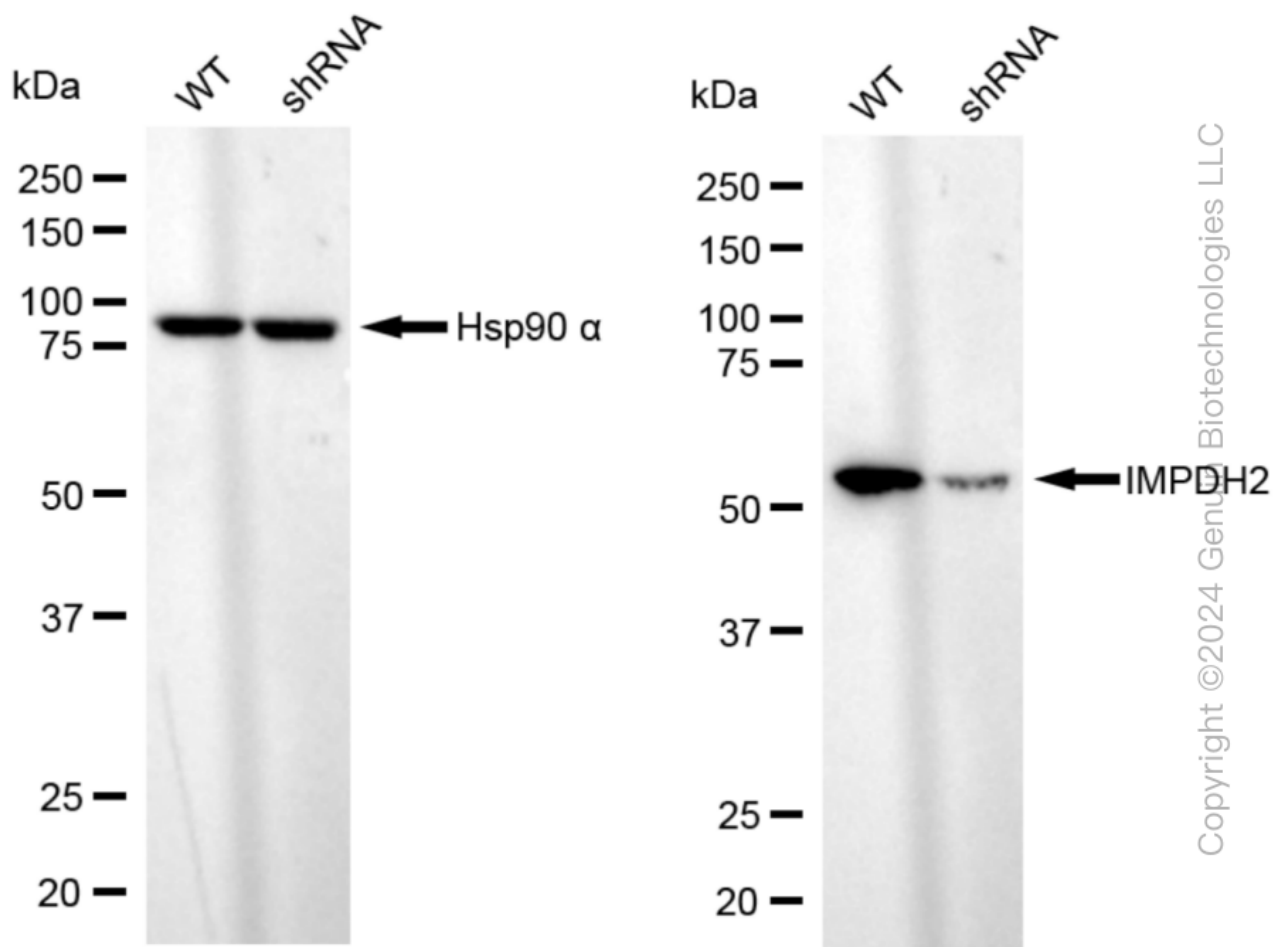
ORDERS

SALES@GENUINBIOTECH.COM
FAX: +1-540-855-7041

WWW.GENUINBIOTECH.COM



Western blotting analysis using anti-IMPDH2 antibody (Cat#61198). Total cell lysates (30 μ g) from various cell lines were loaded and separated by SDS-PAGE. The blot was incubated with anti-IMPDH2 antibody (Cat#61198, 1:5,000) and HRP-conjugated goat anti-rabbit secondary antibody (Cat#201, 1:20,000) respectively. Image was developed using NaQ™ ECL Substrate Kit (Cat#716).



Western blotting analysis using anti-IMPDH2 antibody (Cat#61198). IMPDH2 expression in wild type (WT) and IMPDH2 shRNA knockdown (KD) HeLa cells with 20 µg of total cell lysates. Hsp90 α serves as a loading control. The blot was incubated with anti-IMPDH2 antibody (Cat#61198, 1:5,000) and HRP-conjugated goat anti-rabbit secondary antibody (Cat#201, 1:20,000) respectively. Image was developed using NaQ™ ECL Substrate Kit (Cat#716).