

KD-Validated Anti-RAC3 Recombinant Rabbit Monoclonal Antibody



Catalog #: 61199

Aliases

RAC3; Rac Family Small GTPase 3; Ras-Related C3 Botulinum Toxin Substrate 3 (Rho Family, Small GTP Binding Protein Rac3); Ras-Related C3 Botulinum Toxin Substrate 3; P21-Rac3; Rho Family, Small GTP Binding Protein Rac3; EC 3.6.5.2

Background

Gene Name: RAC3

NCBI Gene Entry: [5881](#)

UniProt Entry: [P60763](#)

Application Information

Molecular Weight: Predicted, 21 kDa, observed, 21 kDa

Clonality: Rabbit monoclonal antibody

Clone ID: 23GB2175

Species Reactivity: Human, mouse

Applications Tested: Western blotting (WB), flow cytometry (FCM), immunocytochemistry (IC)

Immunogen

A synthesized peptide derived from human RAC3

Isotype

Rabbit IgG

Storage Buffer

Supplied in PBS (pH 7.4) containing 50% glycerol, and 0.02% sodium azide.

Storage

Store at -20 °C for one year.

Recommended Dilutions

Western Blotting (WB): 1:1,000-1:5,000

Flow Cytometry (FCM): 1:2,000

Immunocytochemistry (IC): 1:100-1:1,000

Note: This product is for research use only.

SUPPORT

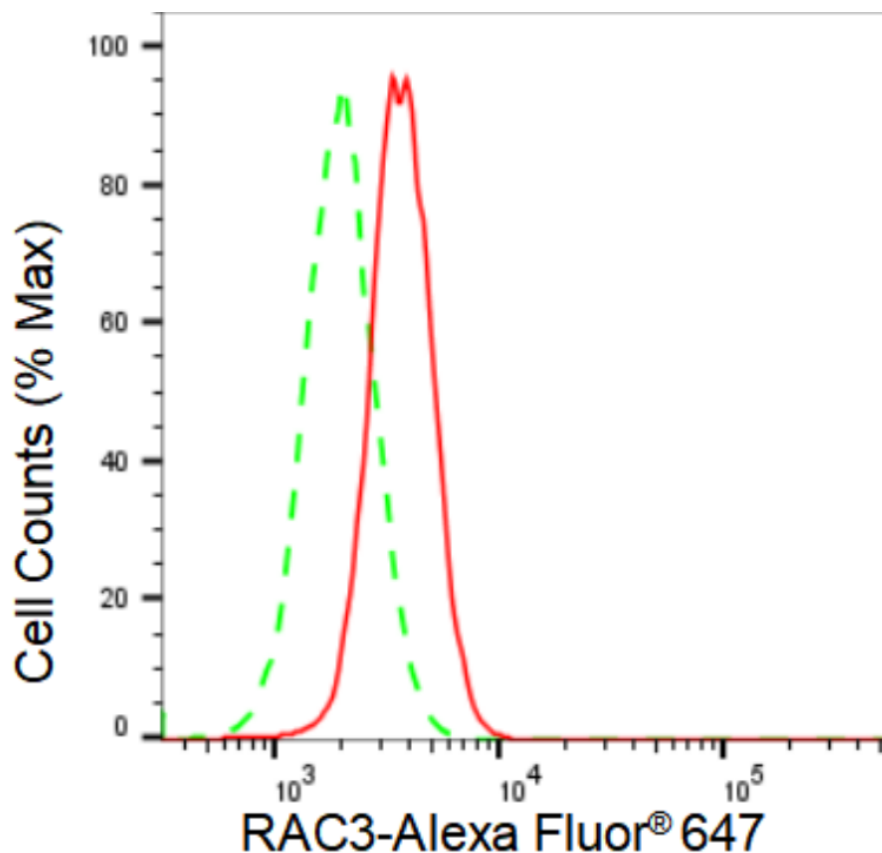
SUPPORT@GENUINBIOTECH.COM
TEL: +1-540-855-7041

ORDERS

SALES@GENUINBIOTECH.COM
FAX: +1-540-855-7041

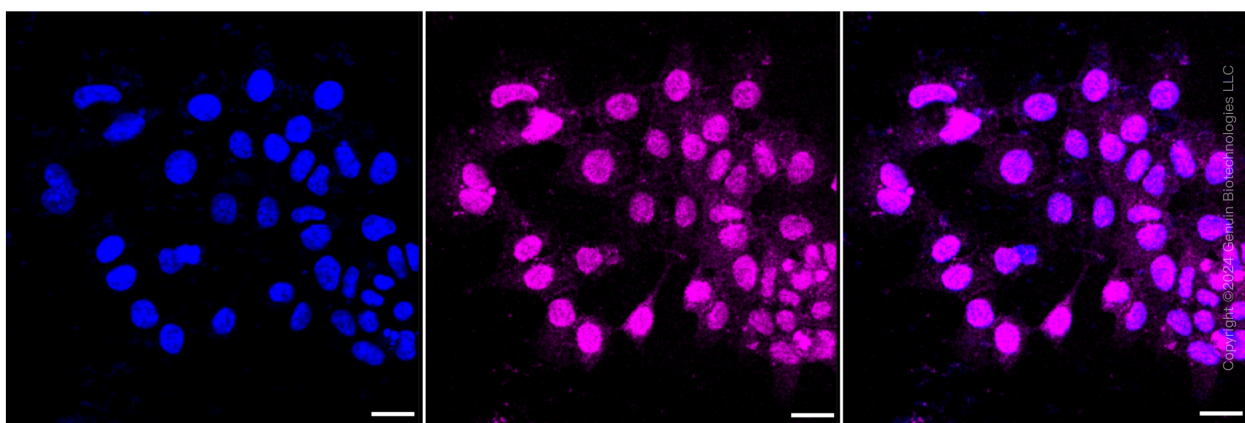
WWW.GENUINBIOTECH.COM

Validation Data



Copyright ©2024 Genuin Biotechnologies LLC

Flow cytometric analysis of RAC3 expression in HAP-1 cells using RAC3 antibody (Cat#61199, 1:2,000). Green, isotype control; red, RAC3.



Copyright ©2024 Genuin Biotechnologies LLC

Immunocytochemical staining of HAP-1 cells with RAC3 antibody (Cat#61199, 1:1,000). Nuclei were stained blue with DAPI; RAC3 was stained magenta with Alexa Fluor® 647. Images were taken using Leica stellaris 5. Protein abundance based on laser Intensity and smart gain: Medium. Scale bar: 20 μ m.

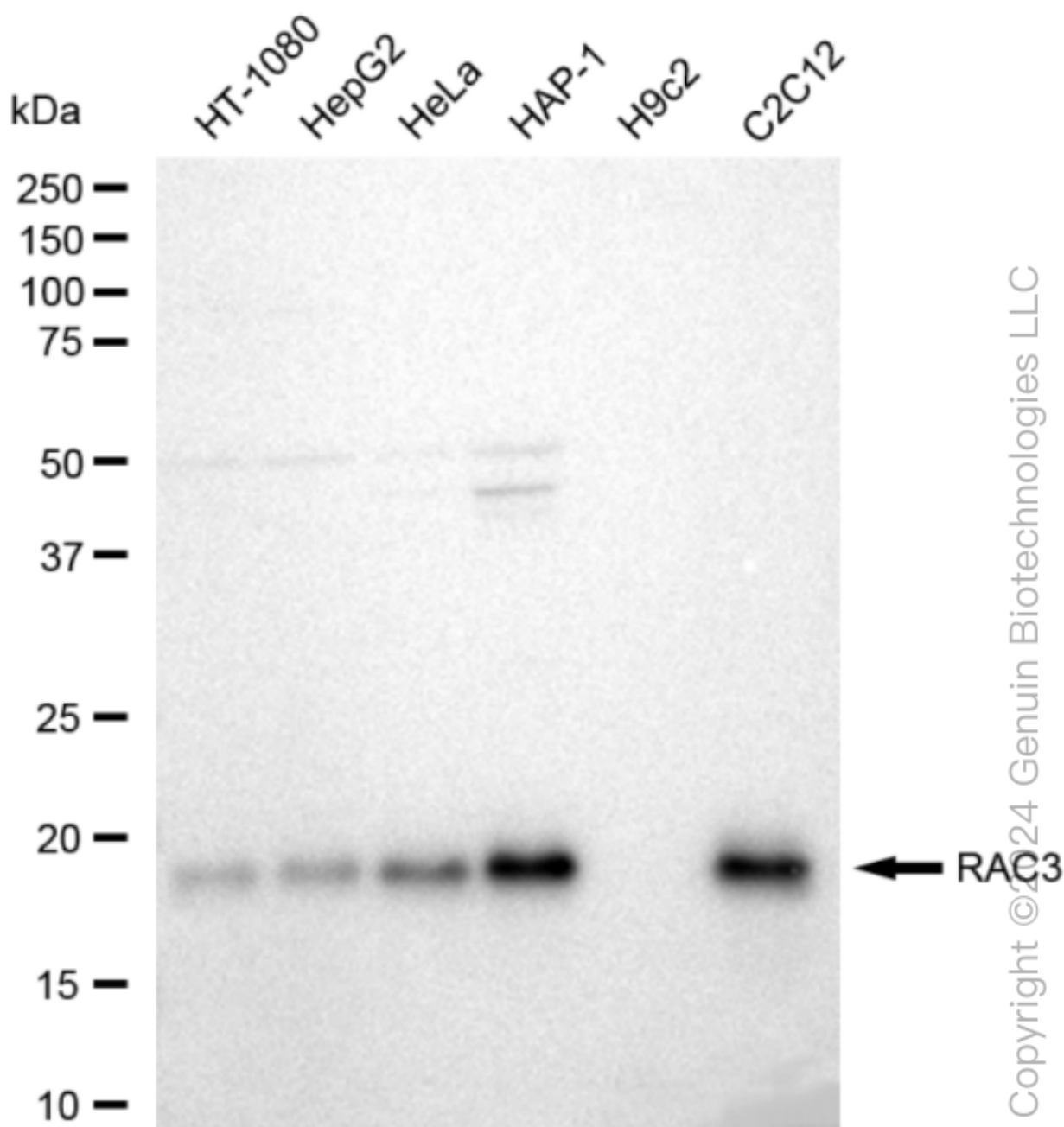
SUPPORT

SUPPORT@GENUINBIOTECH.COM
TEL: +1-540-855-7041

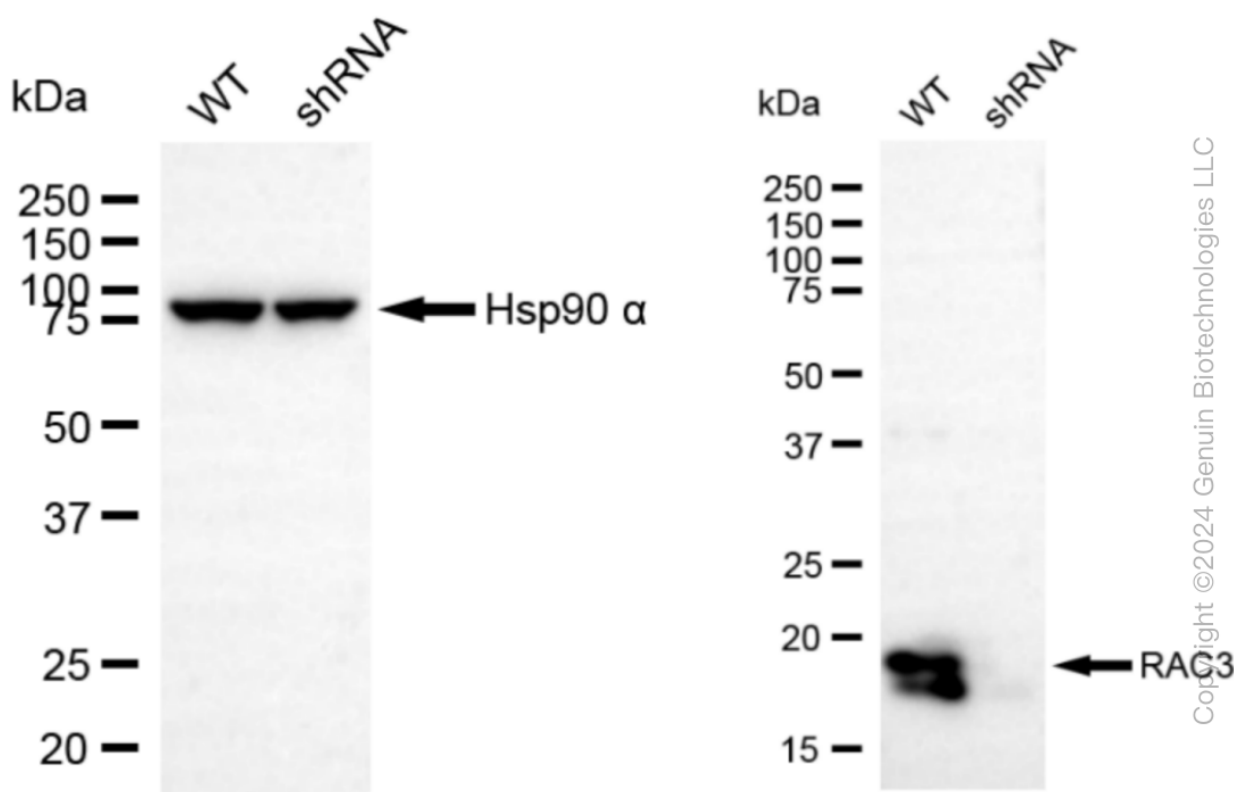
ORDERS

SALES@GENUINBIOTECH.COM
FAX: +1-540-855-7041

WWW.GENUINBIOTECH.COM



Western blotting analysis using anti-RAC3 antibody (Cat#61199). Total cell lysates (30 µg) from various cell lines were loaded and separated by SDS-PAGE. The blot was incubated with anti-PSMB10 antibody (Cat#61199, 1:5,000) and HRP-conjugated goat anti-rabbit secondary antibody (Cat#201, 1:20,000) respectively. Image was developed using FeQ™ ECL Substrate Kit (Cat#226).



Western blotting analysis using anti-RAC3 antibody (Cat#61199). RAC3 expression in wild type (WT) and RAC3 shRNA knockdown (KD) HeLa cells with 30 µg of total cell lysates. β-Tubulin serves as a loading control. The blot was incubated with anti-RAC3 antibody (Cat#61199, 1:5,000) and HRP-conjugated goat anti-rabbit secondary antibody (Cat#201, 1:20,000) respectively. Image was developed using FeQ™ ECL Substrate Kit (Cat#226).