

# KD-Validated Anti-NME1 Recombinant Rabbit Monoclonal Antibody



**Catalog #: 61200**

## Aliases

NME1; NME/NM23 Nucleoside Diphosphate Kinase 1; NM23-H1; NDPKA; NM23; Non-Metastatic Cells 1, Protein (NM23A) Expressed In; Tumor Metastatic Process-Associated Protein; Metastasis Inhibition Factor Nm23; Nucleoside Diphosphate Kinase A; Granzyme A-Activated DNase; NDP Kinase A; EC 2.7.4.6; GAAD; Epididymis Secretory Sperm Binding Protein; NDPK-A; NDK;NDKA; AWD; NBS; NB

## Background

Gene Name: NME1

NCBI Gene Entry: [4830](#)

UniProt Entry: [P15531](#)

## Application Information

Molecular Weight: Predicted, 17 kDa, observed, 17 kDa

Clonality: Rabbit monoclonal antibody

Clone ID: 23GB2180

Species Reactivity: Human

Applications Tested: Western blotting (WB), immunocytochemistry (IC)

## Immunogen

A synthesized peptide derived from human NM23A

## Isotype

Rabbit IgG

## Storage Buffer

Supplied in PBS (pH 7.4) containing 50% glycerol, and 0.02% sodium azide.

## Storage

Store at -20 °C for one year.

## Recommended Dilutions

Western Blotting (WB): 1:1,000-1:5,000

Immunocytochemistry (IC): 1:100-1:1,000

---

### SUPPORT

SUPPORT@GENUINBIOTECH.COM  
TEL: +1-540-855-7041

### ORDERS

SALES@GENUINBIOTECH.COM  
FAX: +1-540-855-7041

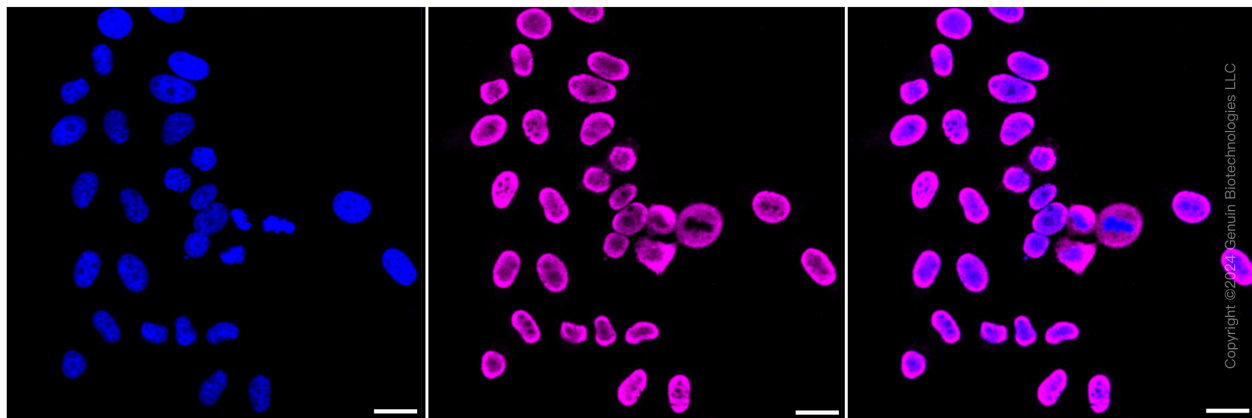
[WWW.GENUINBIOTECH.COM](http://WWW.GENUINBIOTECH.COM)

# KD-Validated Anti-NME1 Recombinant Rabbit Monoclonal Antibody

PAGE 2

**Note:** This product is for research use only.

## Validation Data



Immunocytochemical staining of HepG2 cells with NME1 antibody (Cat#61200, 1:1,000). Nuclei were stained blue with DAPI; NME1 was stained magenta with Alexa Fluor® 647. Images were taken using Leica stellaris 5. Protein abundance based on laser Intensity and smart gain: Medium. Scale bar: 20  $\mu$ m.

---

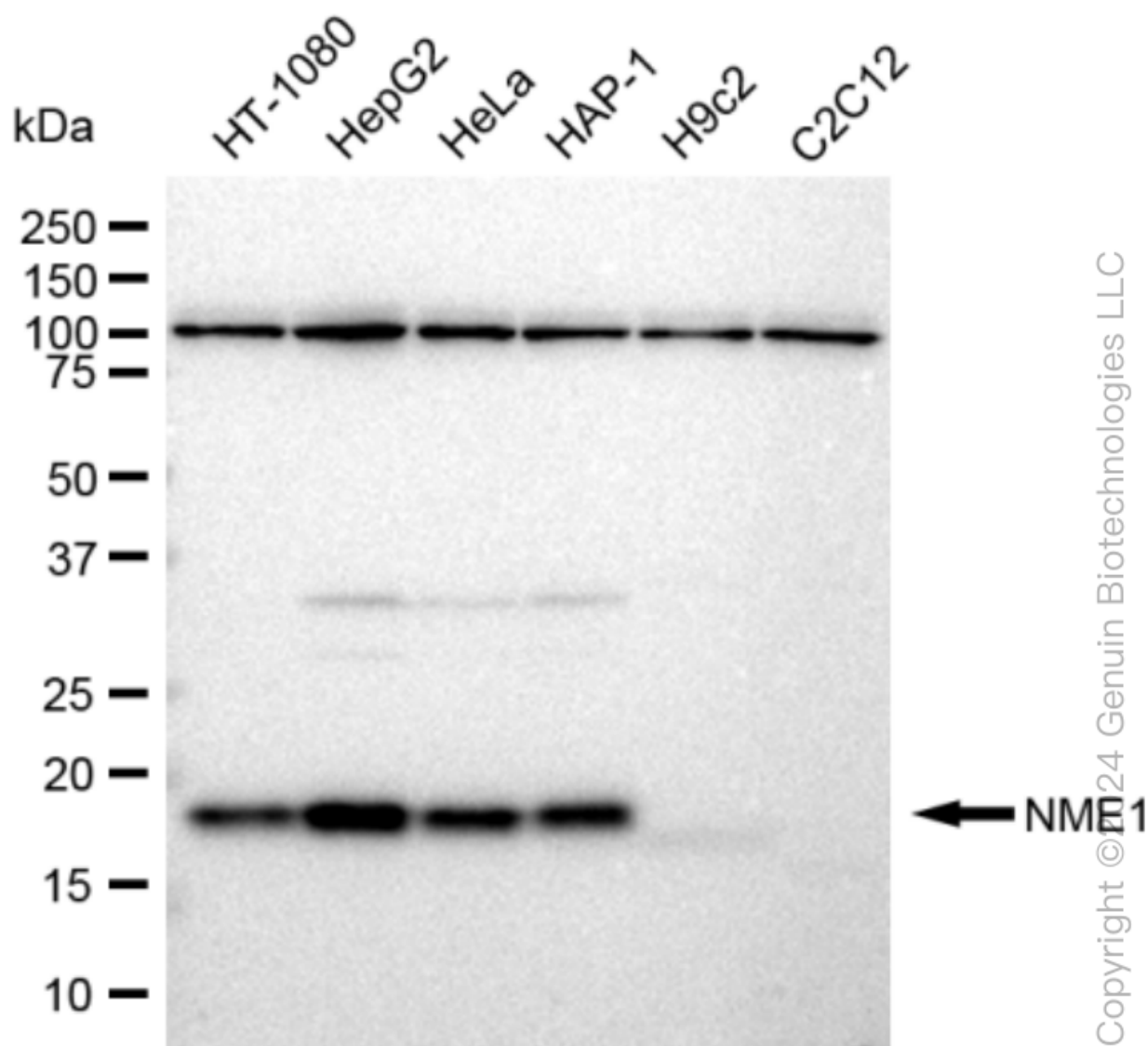
### SUPPORT

SUPPORT@GENUINBIOTECH.COM  
TEL: +1-540-855-7041

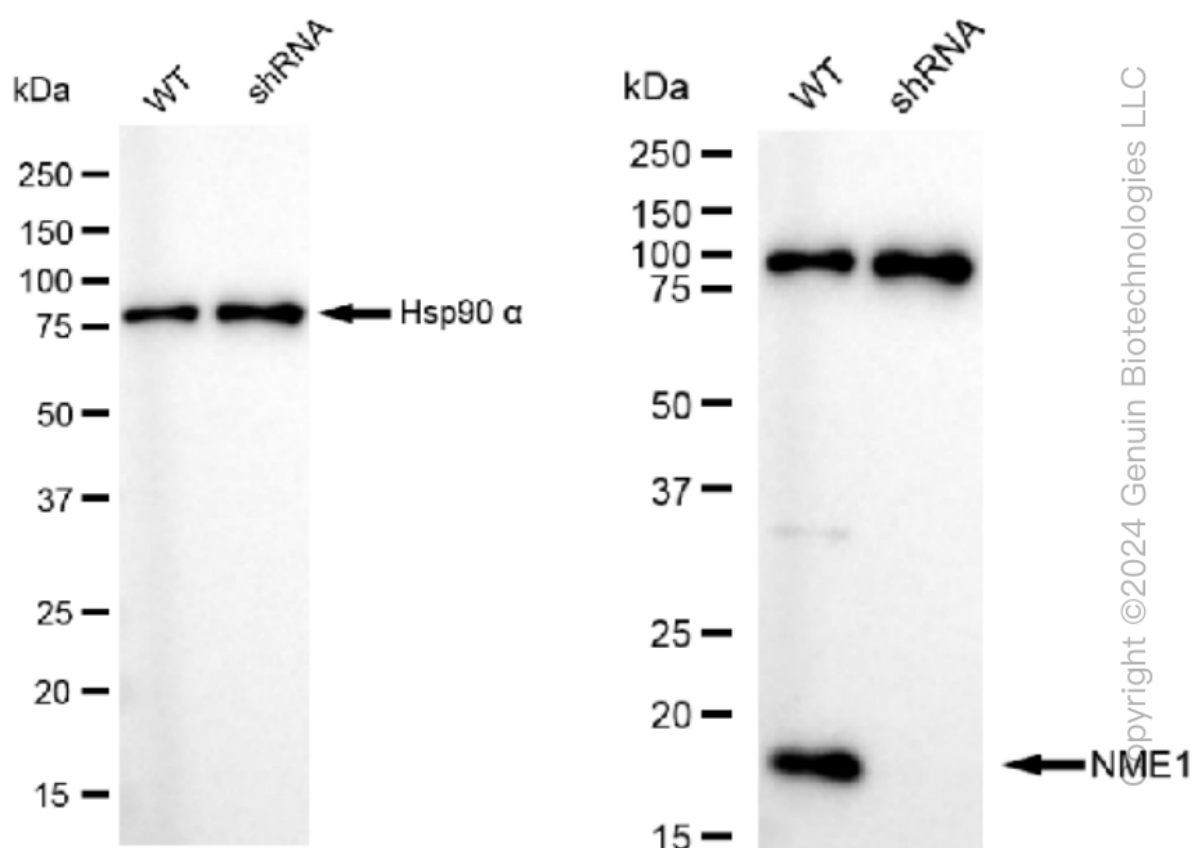
### ORDERS

SALES@GENUINBIOTECH.COM  
FAX: +1-540-855-7041

[WWW.GENUINBIOTECH.COM](http://WWW.GENUINBIOTECH.COM)



Western blotting analysis using anti-NME1 antibody (Cat#61200). Total cell lysates (30  $\mu$ g) from various cell lines were loaded and separated by SDS-PAGE. The blot was incubated with anti-NME1 antibody (Cat#61200, 1:5,000) and HRP-conjugated goat anti-rabbit secondary antibody (Cat#201, 1:20,000) respectively. Image was developed using FeQ™ ECL Substrate Kit (Cat#226).



Western blotting analysis using anti-NME1 antibody (Cat#61200). NME1 expression in wild type (WT) and NME1 shRNA knockdown (KD) HeLa cells with 30 µg of total cell lysates. β-Tubulin serves as a loading control. The blot was incubated with anti-NME1 antibody (Cat#61200, 1:5,000) and HRP-conjugated goat anti-rabbit secondary antibody (Cat#201, 1:20,000) respectively. Image was developed using FeQ™ ECL Substrate Kit (Cat#226).