

# KD-Validated Anti-Pancreatic proteinase 1 Recombinant Rabbit Monoclonal Antibody



**Catalog #: 61202**

## Aliases

HPRT1; Hypoxanthine Phosphoribosyltransferase 1; HGPRT; HPRT; Hypoxanthine Guanine Phosphoribosyl Transferase; Hypoxanthine-Guanine Phosphoribosyltransferase; EC 2.4.2.8; HGPRTase; Hypoxanthine-Guanine Phosphoribosyltransferase 1; Testicular Tissue Protein Li 89; Lesch-Nyhan Syndrome

## Background

Gene Name: HPRT1

NCBI Gene Entry: [3251](#)

UniProt Entry: [P00492](#)

## Application Information

Molecular Weight: Predicted, 25 kDa, observed, 25 kDa

Clonality: Rabbit monoclonal antibody

Clone ID: 24GB6185

Species Reactivity: Human, mouse, rat

Applications Tested: Western blotting (WB), flow cytometry (FCM), immunocytochemistry (IC)

## Immunogen

A synthesized peptide derived from human HPRT

## Isotype

Rabbit IgG

## Storage Buffer

Supplied in PBS (pH 7.4) containing 50% glycerol, and 0.02% sodium azide.

## Storage

Store at -20 °C for one year.

## Recommended Dilutions

Western Blotting (WB): 1:1,000-1:5,000

Flow Cytometry (FCM): 1:2,000

Immunocytochemistry (IC): 1:100-1:1,000

---

### SUPPORT

SUPPORT@GENUINBIOTECH.COM  
TEL: +1-540-855-7041

### ORDERS

SALES@GENUINBIOTECH.COM  
FAX: +1-540-855-7041

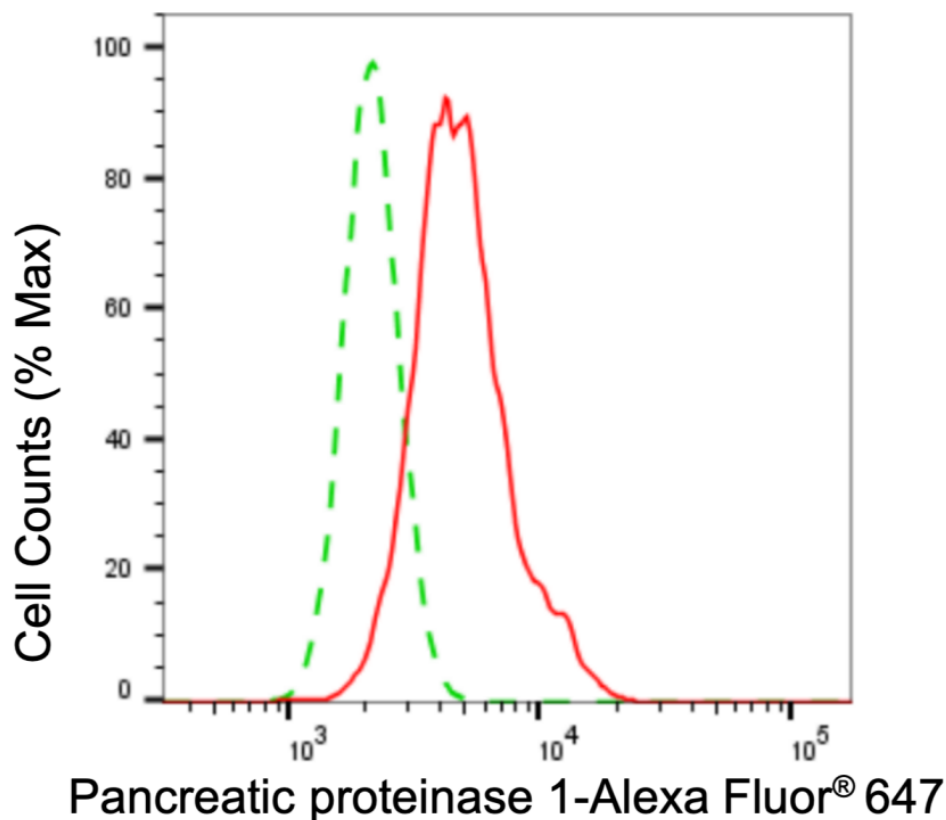
[WWW.GENUINBIOTECH.COM](http://WWW.GENUINBIOTECH.COM)

# KD-Validated Anti-Pancreatic proteinase 1 Recombinant Rabbit Monoclonal Antibody

PAGE 2

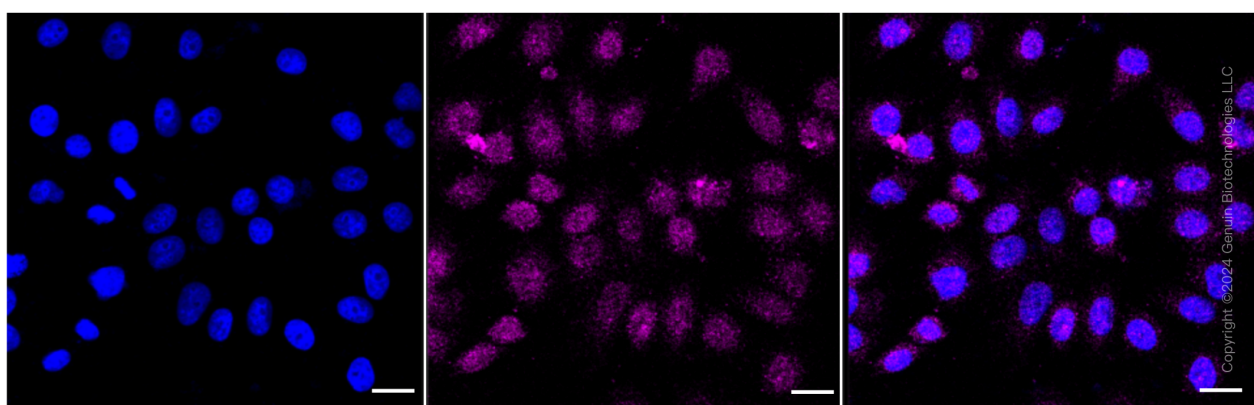
**Note:** This product is for research use only.

## Validation Data



Copyright ©2024 Genuin Biotechnologies LLC

Flow cytometric analysis of pancreatic proteinase 1 expression in HepG2 cells using pancreatic proteinase 1 antibody (Cat#61202, 1:2,000). Green, isotype control; red, pancreatic proteinase 1.



Immunocytochemical staining of HepG2 cells with anti-pancreatic proteinase 1 antibody (Cat#61202, 1:1,000). Nuclei were stained blue with DAPI; Pancreatic proteinase 1 was stained magenta with Alexa Fluor® 647. Images were taken using Leica stellaris 5. Protein abundance based on laser Intensity and smart gain: Medium. Scale bar: 20  $\mu$ m.

### SUPPORT

SUPPORT@GENUINBIOTECH.COM  
TEL: +1-540-855-7041

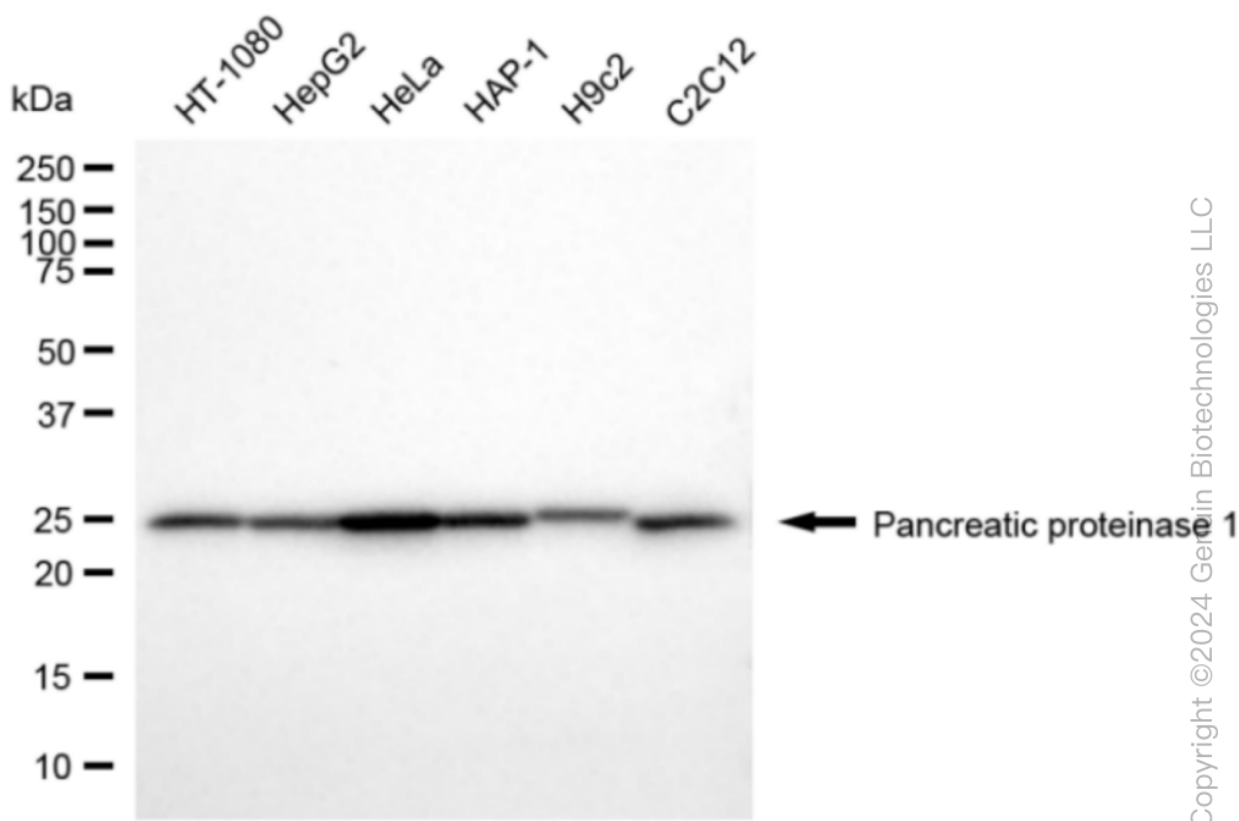
### ORDERS

SALES@GENUINBIOTECH.COM  
FAX: +1-540-855-7041

[WWW.GENUINBIOTECH.COM](http://WWW.GENUINBIOTECH.COM)

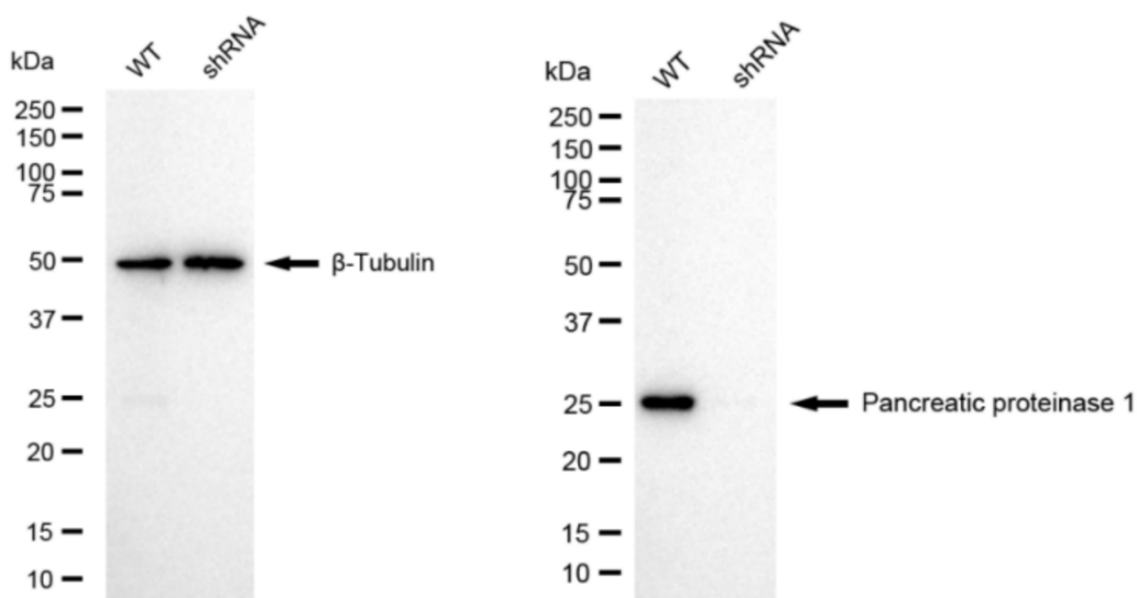
# KD-Validated Anti-Pancreatic proteinase 1 Recombinant Rabbit Monoclonal Antibody

PAGE 3



Copyright ©2024 Genuin Biotechnologies LLC

Western blotting analysis using anti-pancreatic proteinase 1 antibody (Cat#61202). Total cell lysates (30  $\mu$ g) from various cell lines were loaded and separated by SDS-PAGE. The blot was incubated with anti-pancreatic proteinase 1 antibody (Cat#61202, 1:5,000) and HRP-conjugated goat anti-rabbit secondary antibody (Cat#201, 1:20,000) respectively. Image was developed using NaQ™ ECL Substrate Kit (Cat#716).



Copyright ©2024 Genuin Biotechnologies LLC

## SUPPORT

SUPPORT@GENUINBIOTECH.COM  
TEL: +1-540-855-7041

## ORDERS

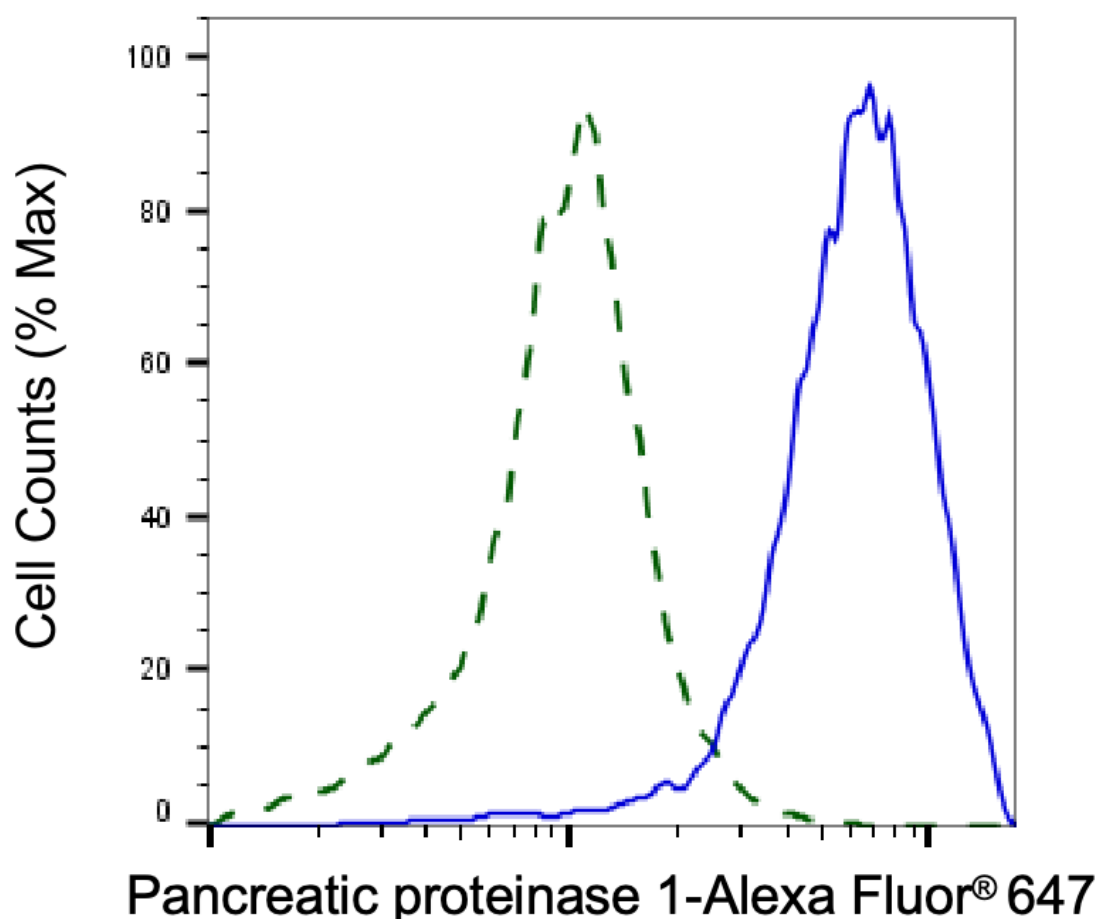
SALES@GENUINBIOTECH.COM  
FAX: +1-540-855-7041

WWW.GENUINBIOTECH.COM

## KD-Validated Anti-Pancreatic proteinase 1 Recombinant Rabbit Monoclonal Antibody

PAGE 4

Western blotting analysis using anti-pancreatic proteinase 1 antibody (Cat#61202). Pancreatic proteinase 1 expression in wild-type (WT) and pancreatic proteinase 1 (HPRT1) shRNA knockdown (KD) HeLa cells with 20 µg of total cell lysates. Hsp90  $\alpha$  serves as a loading control. The blot was incubated with anti-pancreatic proteinase 1 antibody (Cat#61202, 1:5,000) and HRP-conjugated goat anti-rabbit secondary antibody (Cat#201, 1:20,000) respectively. Image was developed using NaQ™ ECL Substrate Kit (Cat#716).



Validation of Pancreatic proteinase 1 knockdown using flow cytometry. Wild-type(WT, Blue) and knockdown(KD, Green) HeLa cells were stained with anti-Pancreatic proteinase 1 antibody (Cat#61202, 1:2,000) and analyzed using BD flow cytometer.

### SUPPORT

SUPPORT@GENUINBIOTECH.COM  
TEL: +1-540-855-7041

### ORDERS

SALES@GENUINBIOTECH.COM  
FAX: +1-540-855-7041

WWW.GENUINBIOTECH.COM