

KD-Validated Anti-Vinculin Recombinant Rabbit Monoclonal Antibody



Catalog #: 61205

Aliases

VCL; Vinculin; Metavinculin; VINC; MV; Epididymis Secretory Sperm Binding Protein; Epididymis Luminal Protein 114; Meta-Vinculin; HEL114; CMD1W; CMH15; MVCL

Background

Gene Name: VCL

NCBI Gene Entry: [7414](#)

UniProt Entry: [P18206](#)

Application Information

Molecular Weight: Predicted, 124 kDa, observed, 124 kDa

Clonality: Rabbit monoclonal antibody

Clone ID: 23GB2205

Species Reactivity: Human, mouse, rat

Applications Tested: Western blotting (WB), flow cytometry (FCM), immunocytochemistry (IC)

Immunogen

A synthesized peptide derived from human Vinculin

Isotype

Rabbit IgG

Storage Buffer

Supplied in PBS (pH 7.4) containing 50% glycerol, and 0.02% sodium azide.

Storage

Store at -20 °C for one year.

Recommended Dilutions

Western Blotting (WB): 1:4,000-1:20,000

Flow Cytometry (FCM): 1:2,000

Immunocytochemistry (IC): 1:100-1:1,000

Note: This product is for research use only.

Validation Data

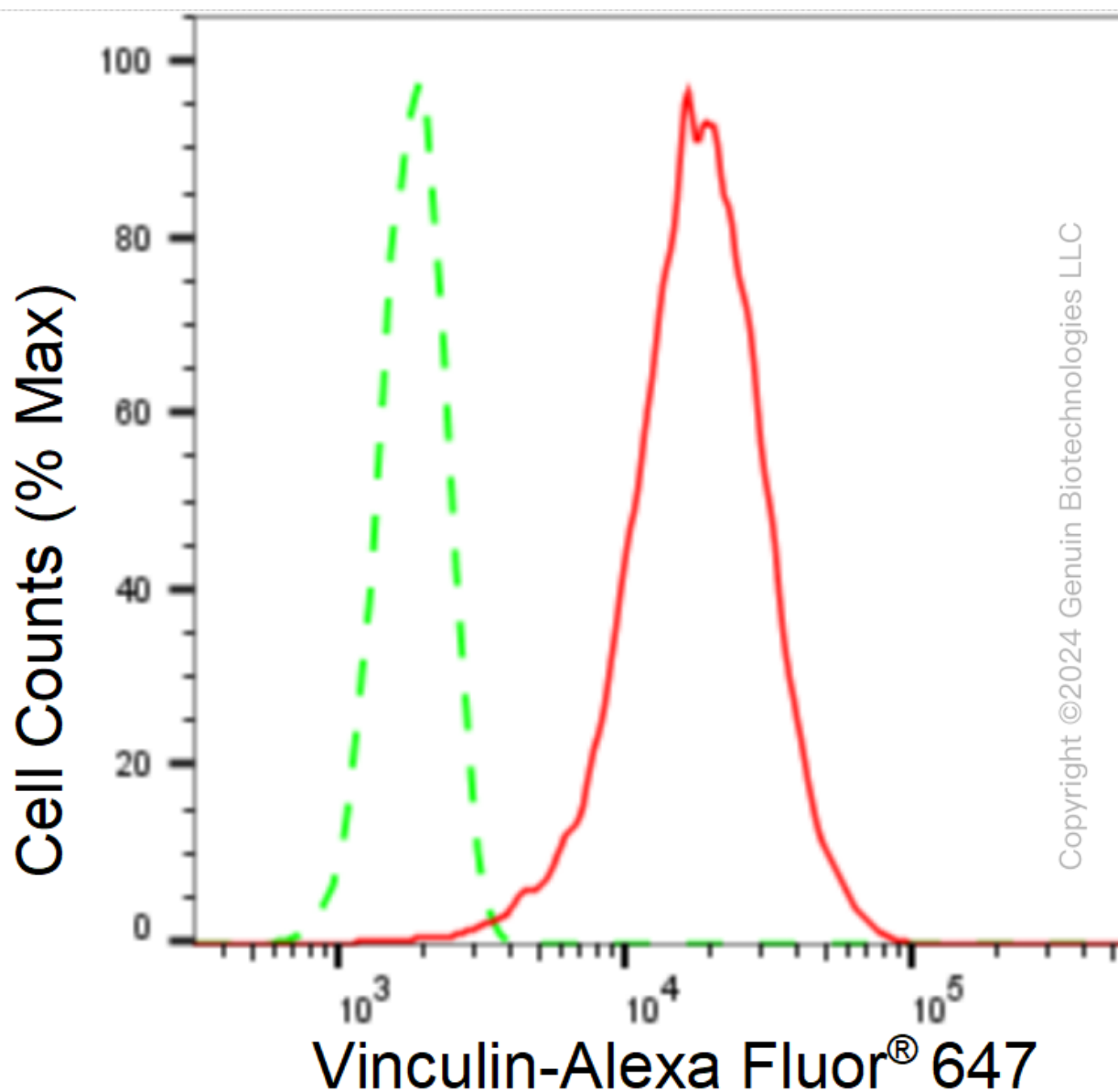
SUPPORT

SUPPORT@GENUINBIOTECH.COM
TEL: +1-540-855-7041

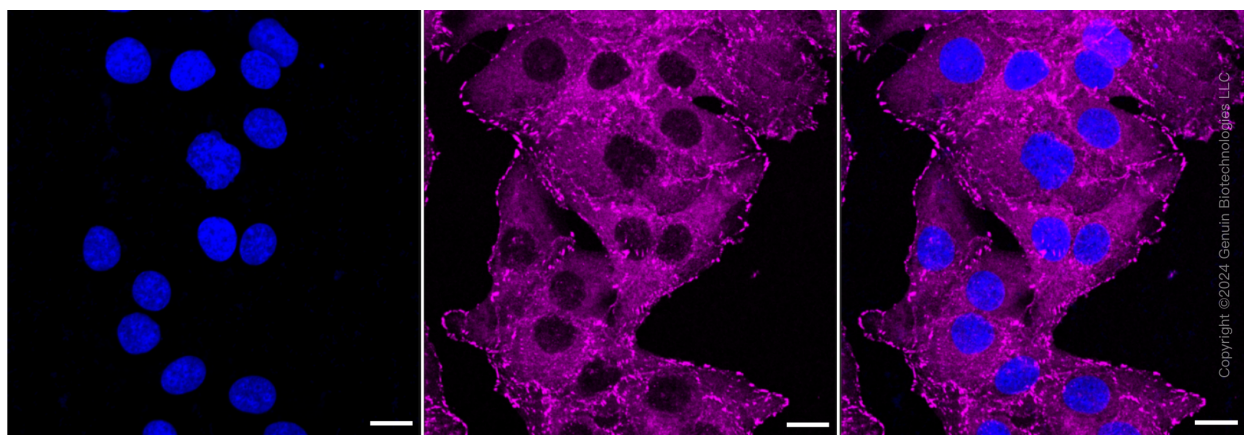
ORDERS

SALES@GENUINBIOTECH.COM
FAX: +1-540-855-7041

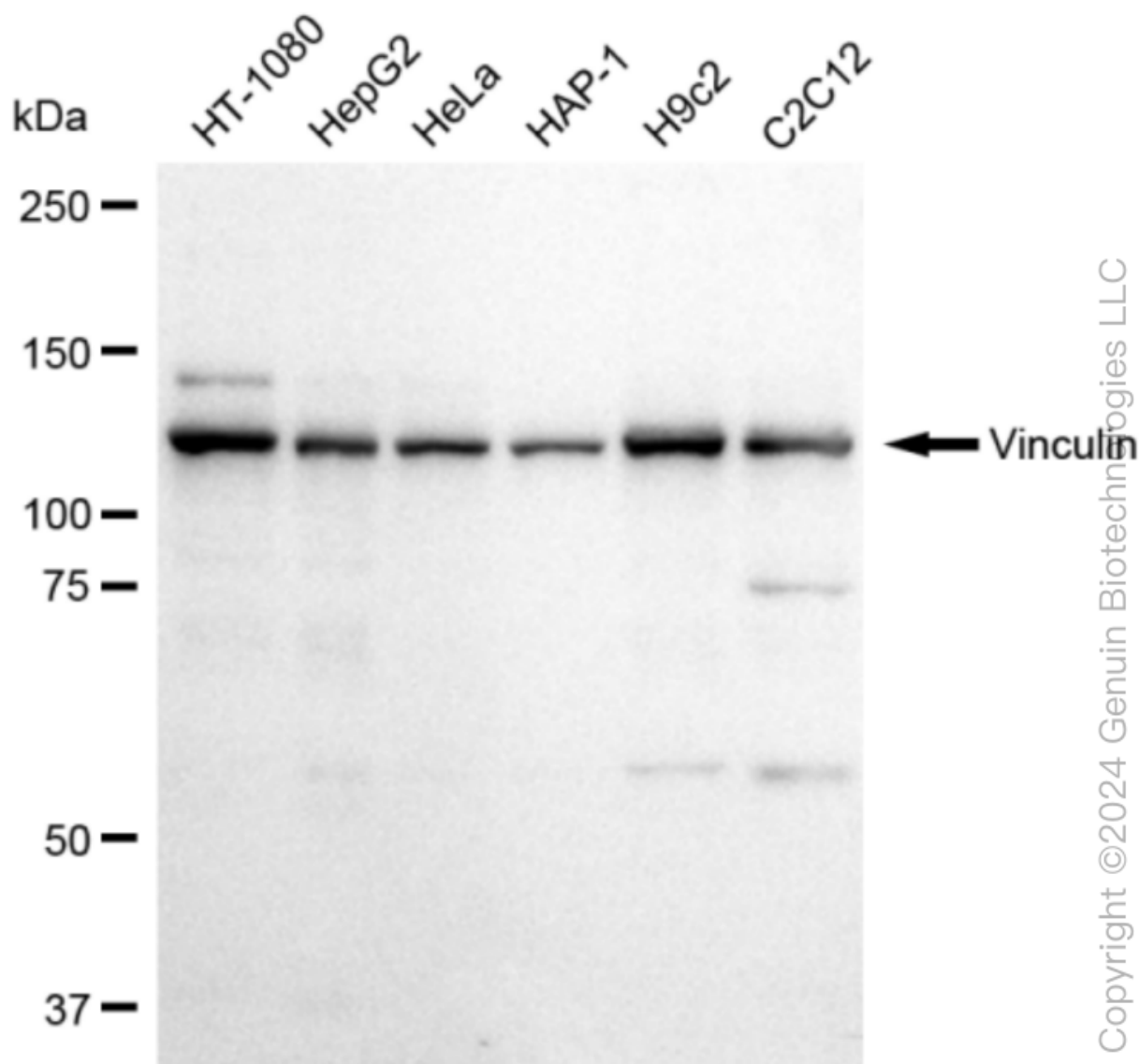
WWW.GENUINBIOTECH.COM



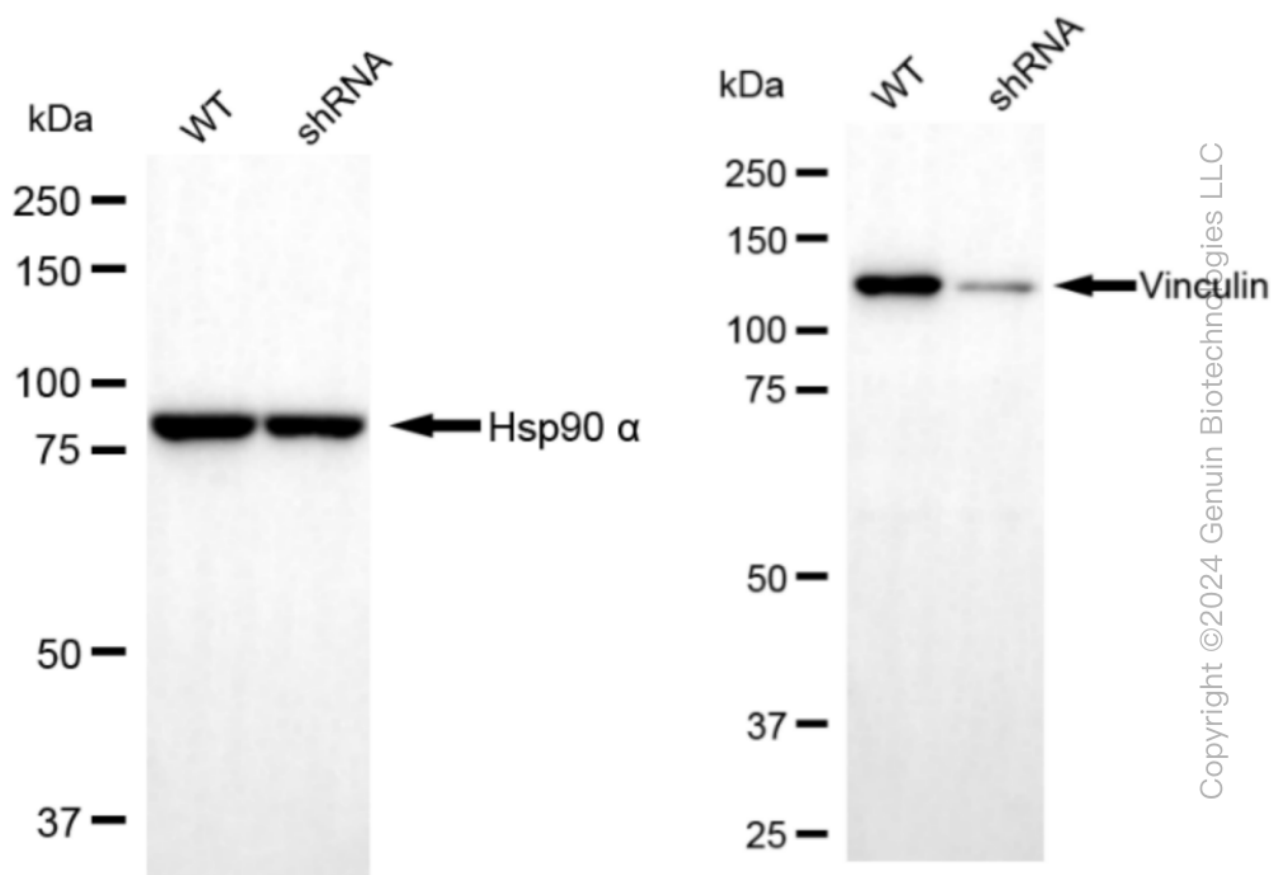
Flow cytometric analysis of Vinculin expression in HT-1080 cells using Vinculin antibody (Cat#61205, 1:2,000). Green, isotype control; red, Vinculin.



Immunocytochemical staining of HT-1080 cells with Vinculin antibody (Cat#61205, 1:1,000). Nuclei were stained blue with DAPI; Vinculin was stained magenta with Alexa Fluor® 647. Images were taken using Leica stellaris 5. Protein abundance based on laser Intensity and smart gain: High. Scale bar: 20 μ m.



Western blotting analysis using anti-Vinculin antibody (Cat#61205). Total cell lysates (30 μ g) from various cell lines were loaded and separated by SDS-PAGE. The blot was incubated with anti-Vinculin antibody (Cat#61205, 1:20,000) and HRP-conjugated goat anti-rabbit secondary antibody (Cat#201, 1:20,000) respectively. Image was developed using FeQ™ ECL Substrate Kit (Cat#226).



Copyright ©2024 Genuin Biotechnologies LLC

Western blotting analysis using anti-Vinculin antibody (Cat#61205). Vinculin expression in wild type (WT) and Vinculin shRNA knockdown (KD) HeLa cells with 20 µg of total cell lysates. Hsp90 α serves as a loading control. The blot was incubated with anti-Vinculin antibody (Cat#61205, 1:20,000) and HRP-conjugated goat anti-rabbit secondary antibody (Cat#201, 1:20,000) respectively. Image was developed using NaQ™ ECL Substrate Kit (Cat#716).