

KD-Validated Anti-JNK1 Recombinant Rabbit Monoclonal Antibody



Catalog #: 61208

Aliases

MAPK8; Mitogen-Activated Protein Kinase 8; SAPK1; JNK1; PRKM8; JNK; Stress-Activated Protein Kinase 1c; C-Jun N-Terminal Kinase 1; JUN N-Terminal Kinase; MAP Kinase 8; EC 2.7.11.24; JNK-46; SAPK1c; Stress-Activated Protein Kinase JNK1; Stress-Activated Protein Kinase 1; JNK21B1/2; EC 2.7.11; JNK1A2; SAPK1C; MAPK 8

Background

Gene Name: MAPK8

NCBI Gene Entry: [5599](#)

UniProt Entry: [P45983](#)

Application Information

Molecular Weight: Predicted, 48 kDa, observed, 45,50 kDa

Clonality: Rabbit monoclonal antibody

Clone ID: 23GB2220

Species Reactivity: Human, mouse, rat

Applications Tested: Western blotting (WB), flow cytometry (FCM)

Immunogen

A synthesized peptide derived from human JNK1

Isotype

Rabbit IgG

Storage Buffer

Supplied in PBS (pH 7.4) containing 50% glycerol, and 0.02% sodium azide.

Storage

Store at -20 °C for one year.

Recommended Dilutions

Western Blotting (WB): 1:1,000-1:2,500

Flow Cytometry (FCM): 1:2,000

Note: This product is for research use only.

SUPPORT

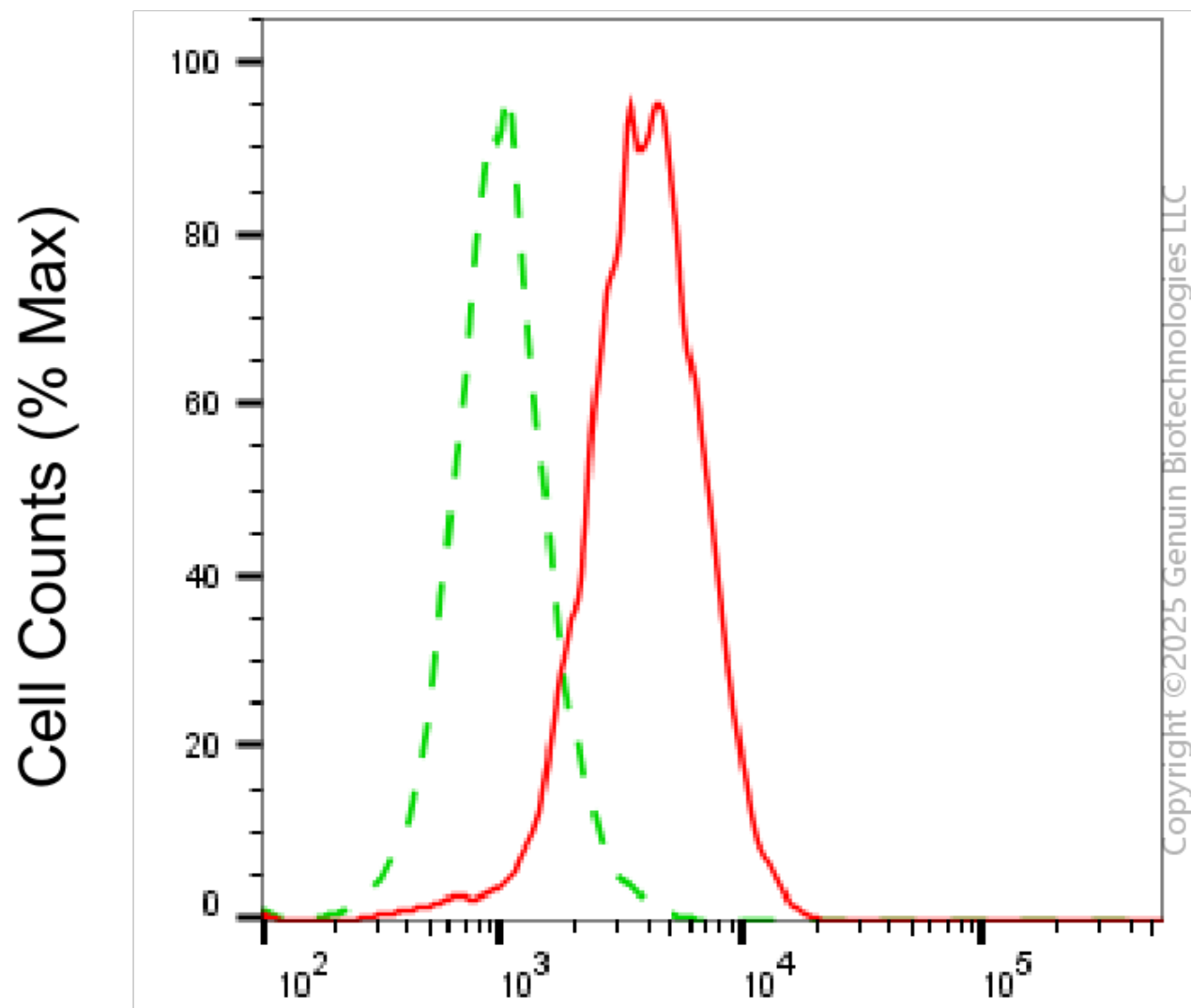
SUPPORT@GENUINBIOTECH.COM
TEL: +1-540-855-7041

ORDERS

SALES@GENUINBIOTECH.COM
FAX: +1-540-855-7041

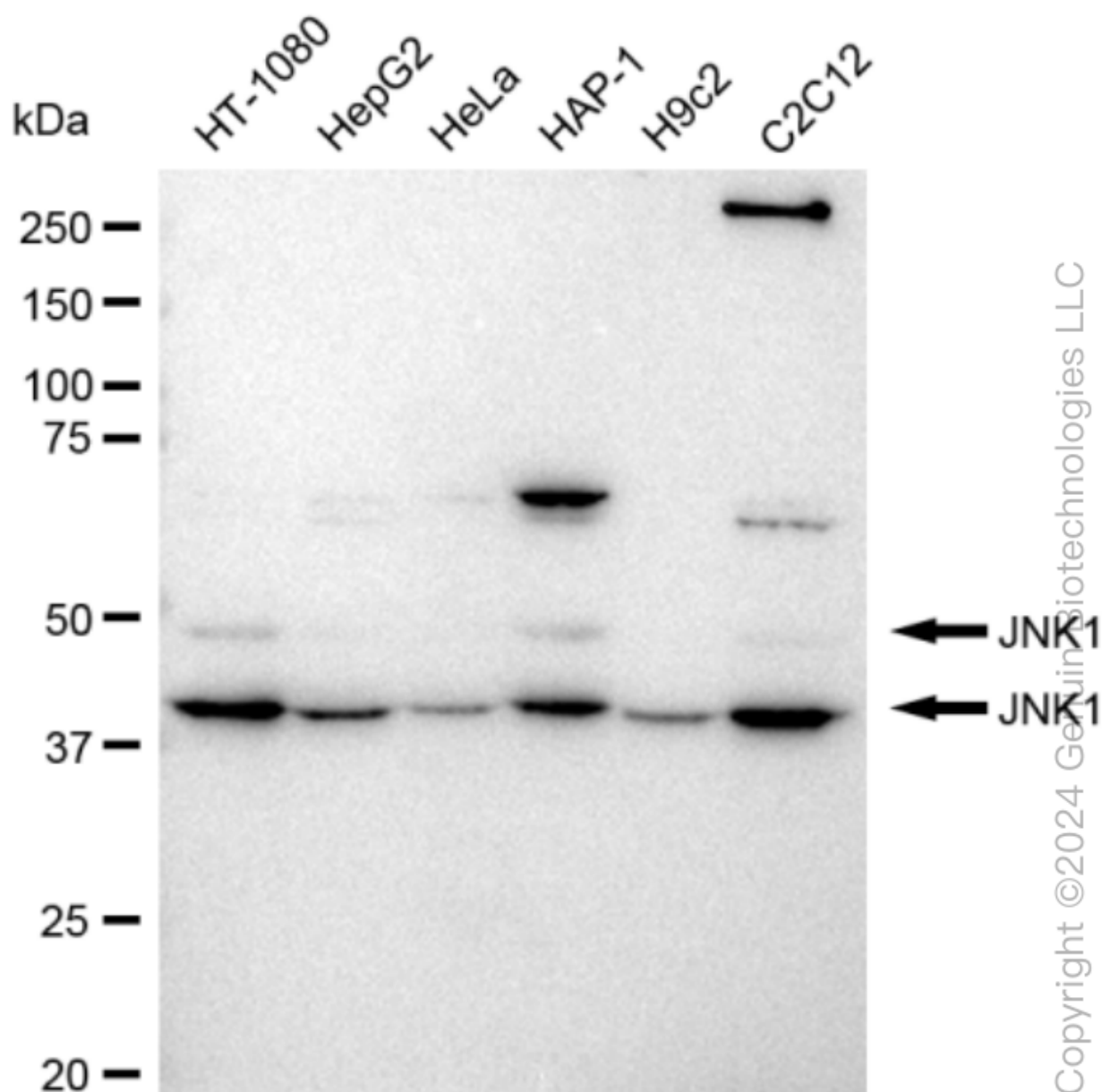
WWW.GENUINBIOTECH.COM

Validation Data

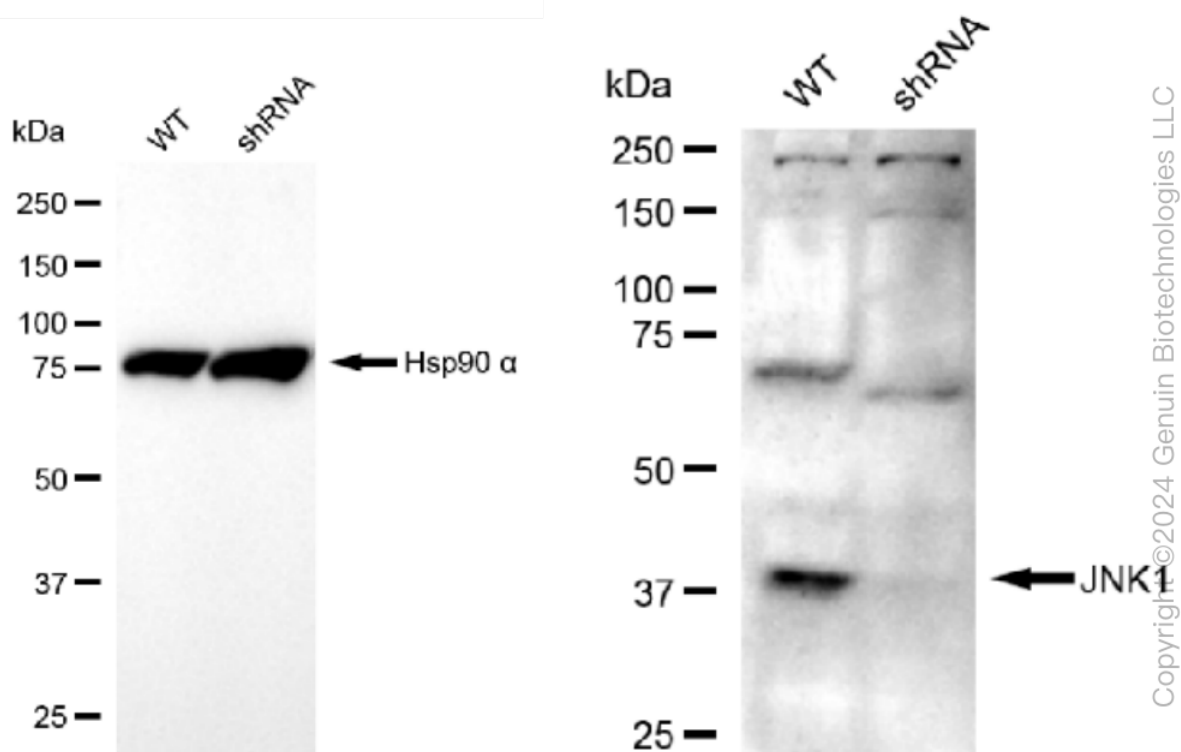


JNK1-Alexa Fluor® 647

Flow cytometric analysis of JNK1 expression in C2C12 cells using anti-JNK1 antibody (Cat#61208, 1 μ g/2000). Green, isotype control; red, JNK1.



Western blotting analysis using anti-JNK1 antibody (Cat#61208). Total cell lysates (30 μ g) from various cell lines were loaded and separated by SDS-PAGE. The blot was incubated with anti-JNK1 antibody (Cat#61208, 1:2,500) and HRP-conjugated goat anti-rabbit secondary antibody (Cat#201, 1:20,000) respectively. Image was developed using FeQ™ ECL Substrate Kit (Cat#226).



Western blotting analysis using anti-JNK1 antibody (Cat#61208). JNK1 expression in wild type (WT) and JNK1 shRNA knockdown (KD) HeLa cells with 30 μ g of total cell lysates. Hsp90 α serves as a loading control. The blot was incubated with anti-JNK1 antibody (Cat#61208, 1:5,000) and HRP-conjugated goat anti-rabbit secondary antibody (Cat#201, 1:20,000) respectively. Image was developed using FeQ™ ECL Substrate Kit (Cat#226).