

KD-Validated Anti-c-Kit Recombinant Rabbit Monoclonal Antibody



Catalog #: 61209

Aliases

KIT; KIT Proto-Oncogene, Receptor Tyrosine Kinase; SCFR; V-Kit Hardy-Zuckerman 4 Feline Sarcoma Viral Oncogene Homolog; Mast/Stem Cell Growth Factor Receptor Kit ; CD117 ; PBT; Tyrosine-Protein Kinase Kit; Piebald Trait Protein; Proto-Oncogene C-Kit; EC 2.7.10.1; P145 C-Kit; C-Kit; V-Kit Hardy-Zuckerman 4 Feline Sarcoma Viral Oncogene-Like Protein ; Proto-Oncogene Tyrosine-Protein Kinase Kit; C-Kit Protooncogene; Piebald Trait; CD117 Antigen ; EC 2.7.10; MASTC; C-KIT

Background

Gene Name: KIT

NCBI Gene Entry: [3815](#)

UniProt Entry: [P10721](#)

Application Information

Molecular Weight: Predicted, 110 kDa; observed, 120-145 kDa

Clonality: Rabbit monoclonal antibody

Clone ID: 24GB16200

Species Reactivity: Human

Applications Tested: Western blotting (WB)

Immunogen

A synthesized peptide derived from human c-Kit

Isotype

Rabbit IgG

Storage Buffer

Supplied in PBS (pH 7.4) containing 50% glycerol, and 0.02% sodium azide.

Storage

Store at -20 °C for one year.

Recommended Dilutions

Western Blotting (WB): 1:1,000-1:5,000

SUPPORT

SUPPORT@GENUINBIOTECH.COM
TEL: +1-540-855-7041

ORDERS

SALES@GENUINBIOTECH.COM
FAX: +1-540-855-7041

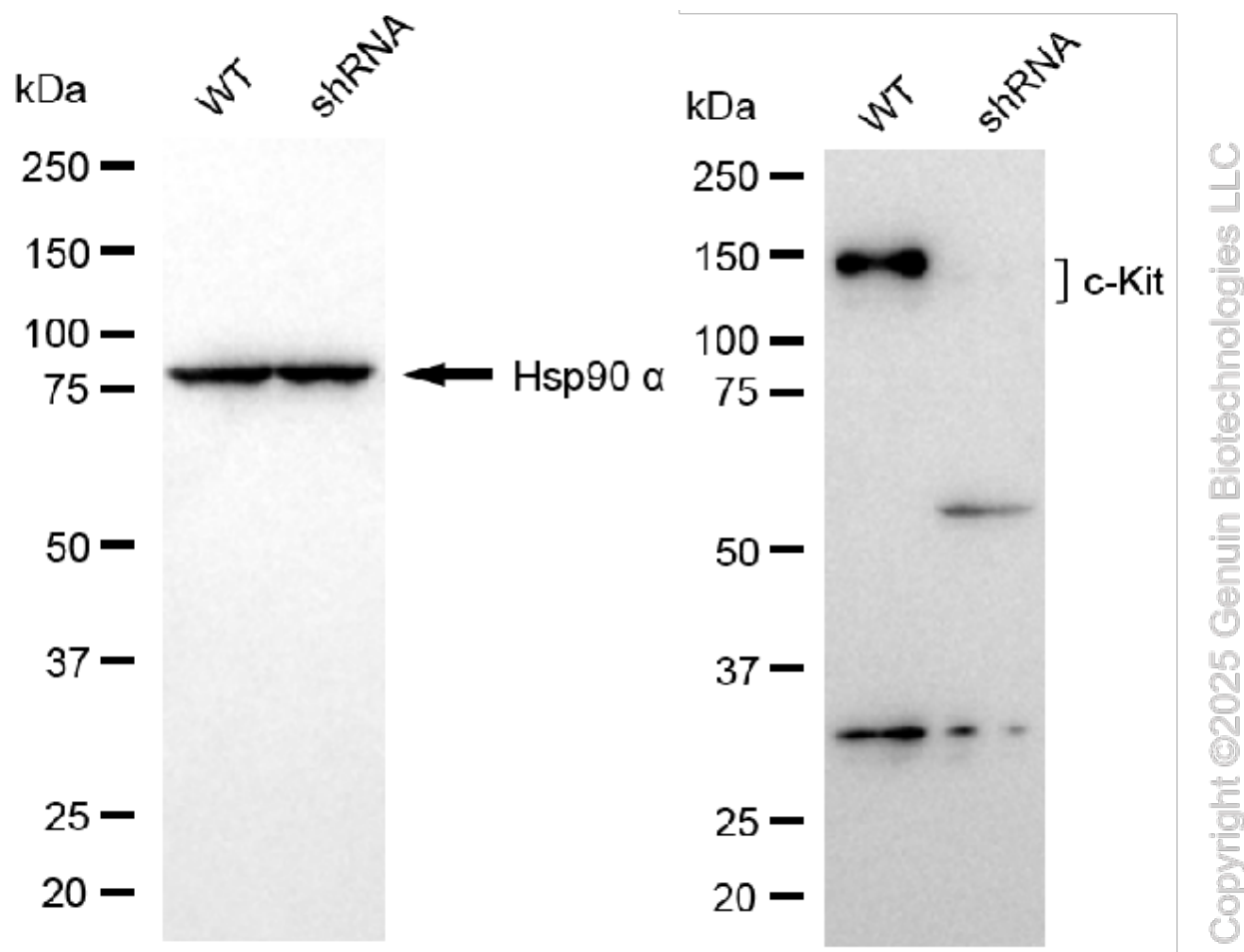
WWW.GENUINBIOTECH.COM

KD-Validated Anti-c-Kit Recombinant Rabbit Monoclonal Antibody

PAGE 2

Note: This product is for research use only.

Validation Data



Western blotting analysis using anti-c-Kit antibody (Cat#61209). C-Kit expression in wild type (WT) and KIT shRNA knockdown (KD) HSHC cells with 20 µg of total cell lysates. Hsp90 α serves as a loading control. The blot was incubated with anti-c-Kit antibody (Cat#61209, 1:5,000) and HRP-conjugated goat anti-rabbit secondary antibody (Cat#201, 1:20,000) respectively. Image was developed using NaQ™ ECL Substrate Kit (Cat#716).

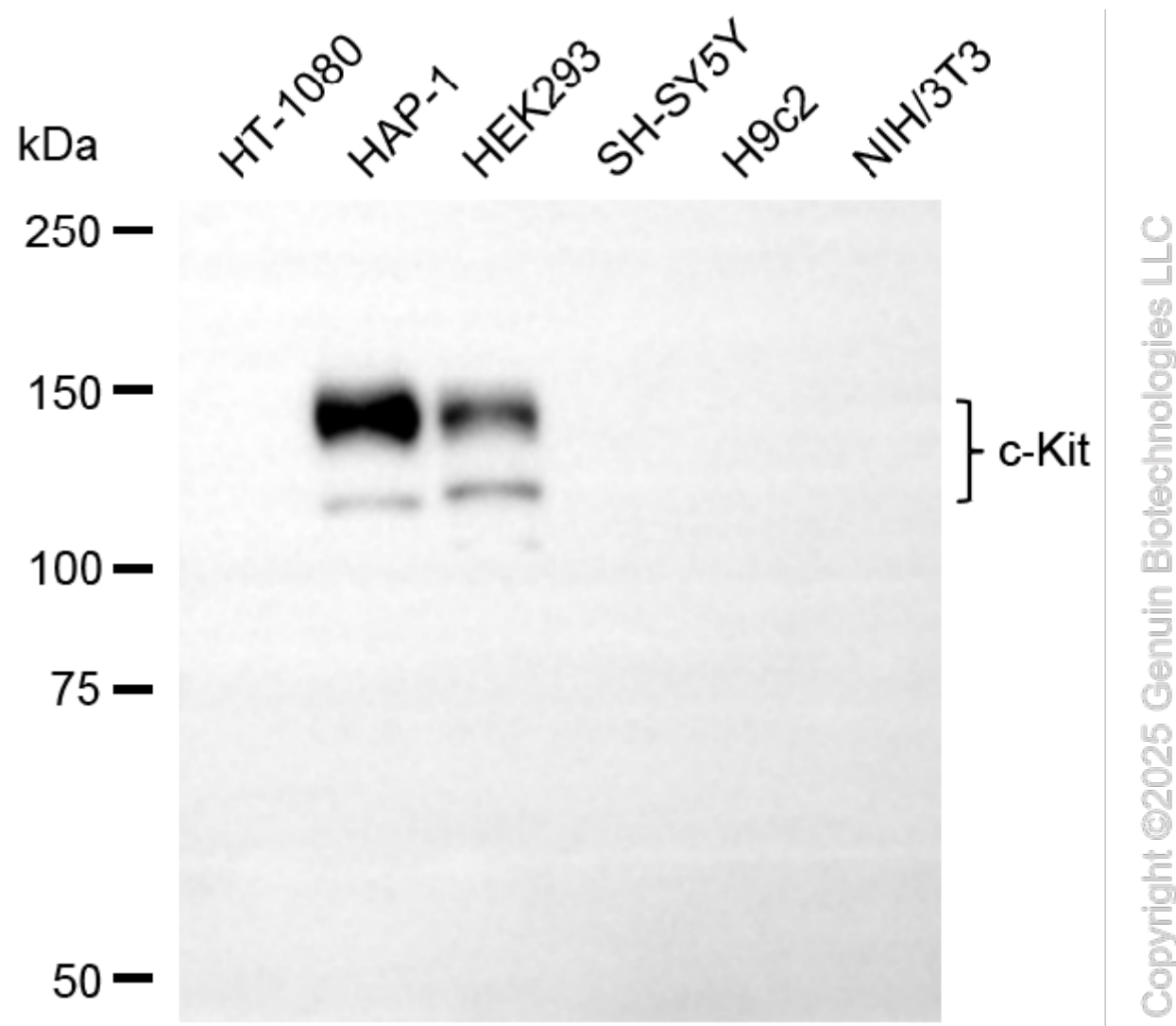
SUPPORT

SUPPORT@GENUINBIOTECH.COM
TEL: +1-540-855-7041

ORDERS

SALES@GENUINBIOTECH.COM
FAX: +1-540-855-7041

WWW.GENUINBIOTECH.COM



Western blotting analysis using anti-c-kit antibody (Cat#61209). Total cell lysates (30 µg) from various cell lines were loaded and separated by SDS-PAGE. The blot was incubated with anti-c-kit antibody (Cat#61209, 1:5,000) and HRP-conjugated goat anti-rabbit secondary antibody (Cat#201, 1:20,000) respectively. Image was developed using FeQ™ ECL Substrate Kit (Cat#226).