

KD-Validated Anti-Phospho-EGFR (Y1068) Recombinant Rabbit Monoclonal Antibody



Catalog #: 61211

Aliases

EGFR; Epidermal Growth Factor Receptor; ERBB1; ERBB; Receptor Tyrosine-Protein Kinase ErbB-1; Erb-B2 Receptor Tyrosine Kinase 1; Proto-Oncogene C-ErbB-1; EC 2.7.10.1; HER1; Epidermal Growth Factor Receptor (Avian Erythroblastic Leukemia Viral (V-Erb-B) Oncogene Homolog); Erythroblastic Leukemia Viral (V-Erb-B) Oncogene Homolog (Avian); Avian Erythroblastic Leukemia Viral (V-Erb-B) Oncogene Homolog; Epidermal Growth Factor Receptor Tyrosine Kinase Domain; Cell Proliferation-Inducing Protein 61; Cell Growth Inhibiting Protein 40; EGFR VIII; EC 2.7.10; NISBD2; PIG61; MENA

Background

Gene Name: EGFR

NCBI Gene Entry: [1956](#)

UniProt Entry: [P00533](#)

Application Information

Molecular Weight: Predicted, 134 kDa; observed, 170 kDa

Clonality: Rabbit monoclonal antibody

Clone ID: 24GB16210

Species Reactivity: Human

Applications Tested: Western blotting (WB), flow cytometry (FCM), immunocytochemistry (IC)

Immunogen

A synthesized peptide derived from human Phospho-EGFR (Y1068)

Isotype

Rabbit IgG

Storage Buffer

Supplied in PBS (pH 7.4) containing 50% glycerol, and 0.02% sodium azide.

Storage

Store at -20 °C for one year.

Recommended Dilutions

Western Blotting (WB): 1:1,000-1:5,000

Flow Cytometry (FCM): 1:2,000

SUPPORT

SUPPORT@GENUINBIOTECH.COM
TEL: +1-540-855-7041

ORDERS

SALES@GENUINBIOTECH.COM
FAX: +1-540-855-7041

WWW.GENUINBIOTECH.COM

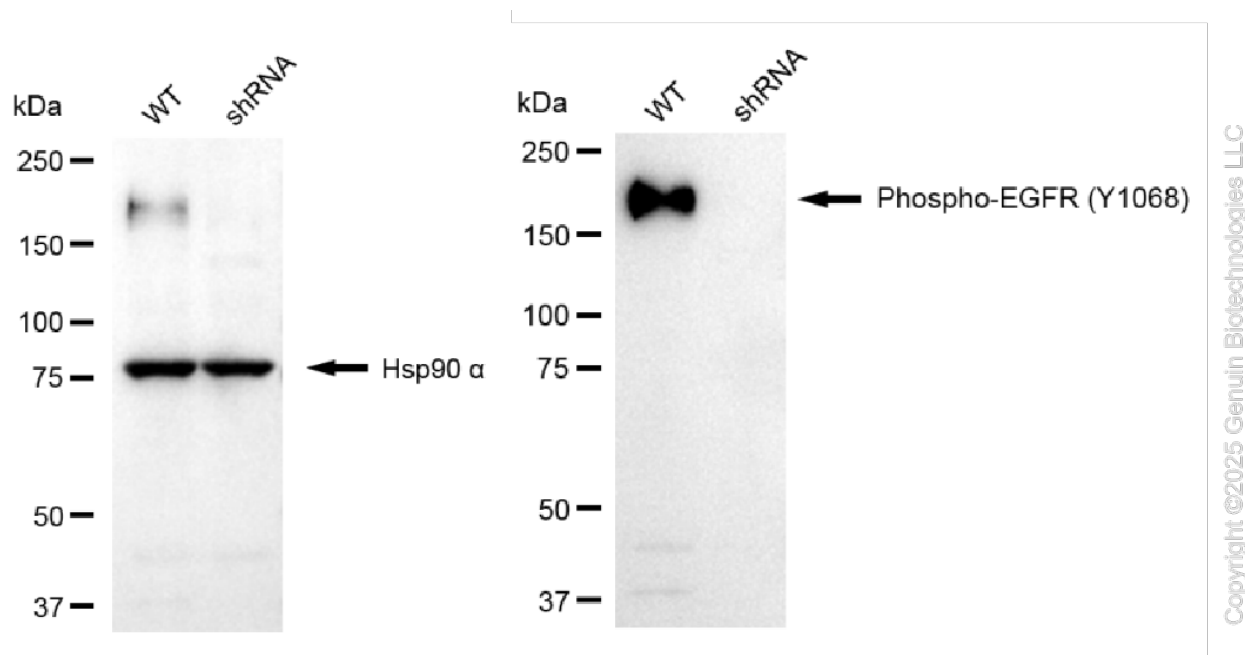
KD-Validated Anti-Phospho-EGFR (Y1068) Recombinant Rabbit Monoclonal Antibody

PAGE 2

Immunocytochemistry (IC): 1:100-1:1,000

Note: This product is for research use only.

Validation Data



Western blotting analysis using anti-phospho-EGFR (Y1068) antibody (Cat#61211). Phospho-EGFR (Y1068) expression in wild type (WT) and EGFR shRNA knockdown (KD) HepG2 cells with 20 µg of total cell lysates. Hsp90 α serves as a loading control. The blot was incubated with anti-phospho-EGFR (Y1068) antibody (Cat#61211, 1:5,000) and HRP-conjugated goat anti-rabbit secondary antibody (Cat#201, 1:20,000) respectively. Image was developed using NaQ™ ECL Substrate Kit (Cat#716).

SUPPORT

SUPPORT@GENUINBIOTECH.COM
TEL: +1-540-855-7041

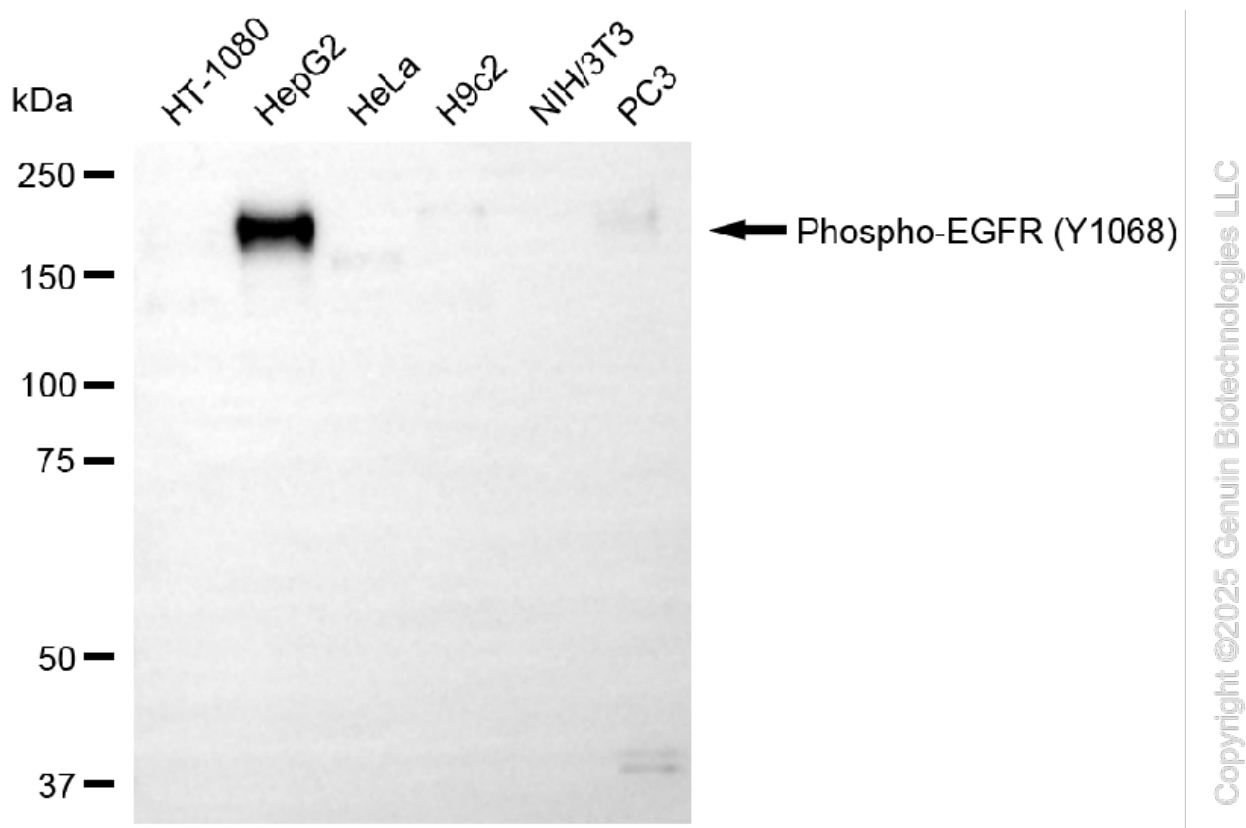
ORDERS

SALES@GENUINBIOTECH.COM
FAX: +1-540-855-7041

WWW.GENUINBIOTECH.COM

KD-Validated Anti-Phospho-EGFR (Y1068) Recombinant Rabbit Monoclonal Antibody

PAGE 3



Western blotting analysis using anti-phospho-EGFR (Y1068) antibody (Cat#61211). Total cell lysates (30 µg) from various cell lines were loaded and separated by SDS-PAGE. The blot was incubated with anti-phospho-EGFR (Y1068) antibody (Cat#61211, 1:5,000) and HRP-conjugated goat anti-rabbit secondary antibody (Cat#201, 1:20,000) respectively. Image was developed using NaQ™ ECL Substrate Kit (Cat#716).

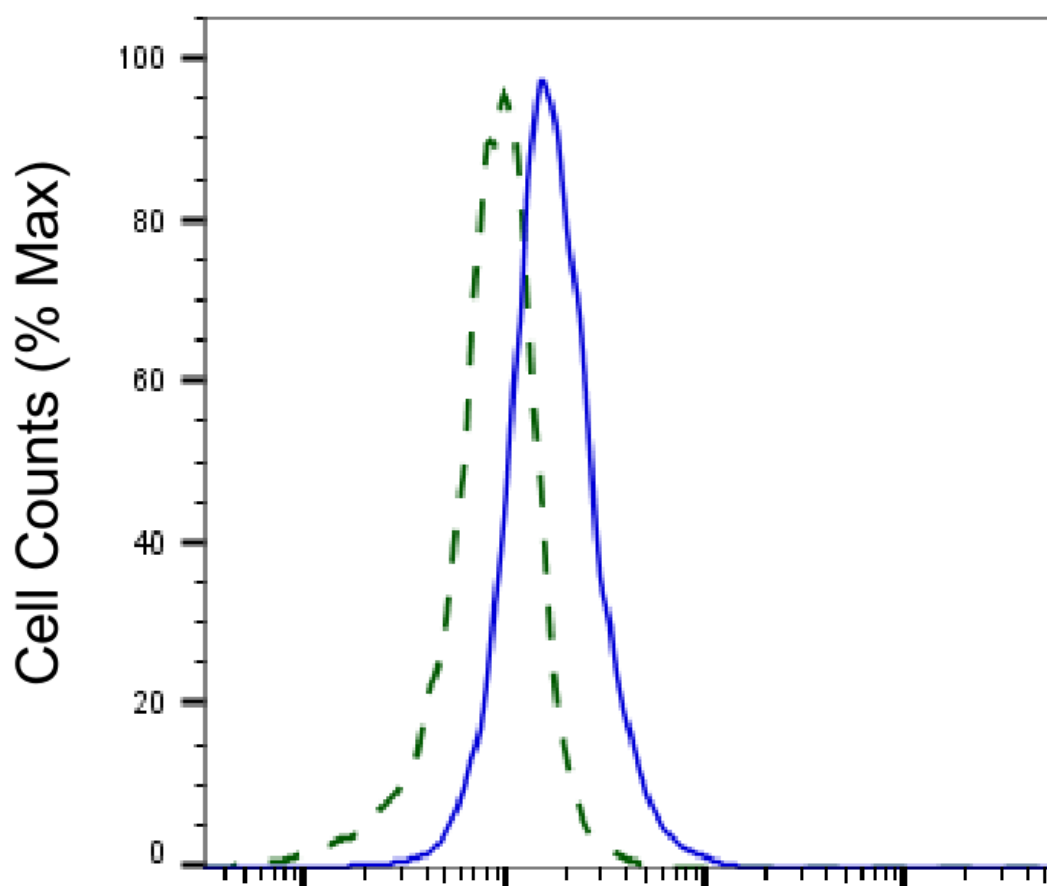
SUPPORT

SUPPORT@GENUINBIOTECH.COM
TEL: +1-540-855-7041

ORDERS

SALES@GENUINBIOTECH.COM
FAX: +1-540-855-7041

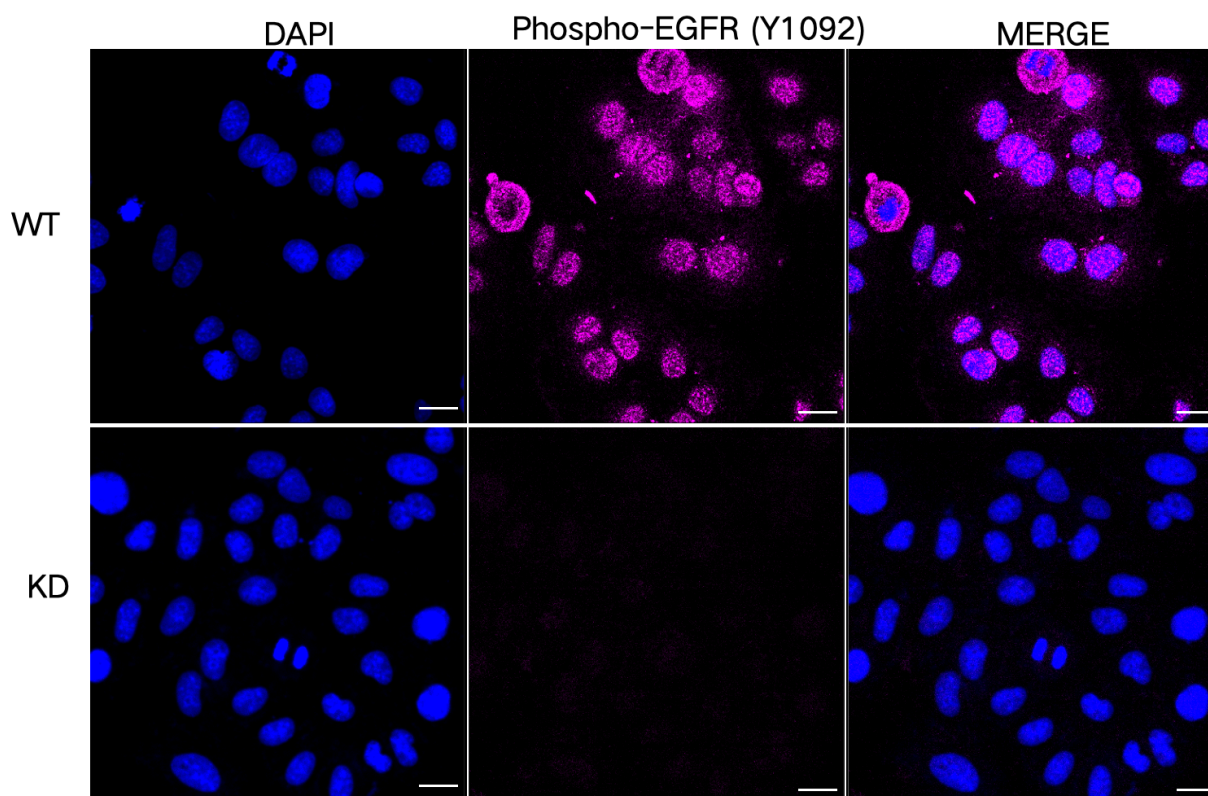
WWW.GENUINBIOTECH.COM



Copyright ©2025 Genuin Biotechnologies LLC

Phospho-EGFR (Y1092)-Alexa Fluor® 647

Validation of EGFR knockdown using flow cytometry. Wild-type(WT, Blue) and knockdown(KD, Green) HepG2 cells were stained with anti-Phospho-EGFR (Y1092) antibody (Cat#61211, 1:2,000) and analyzed using BD flow cytometer.



Immunocytochemical staining of HepG2 cells using anti-Phospho-EGFR (Y1092) antibody (Cat#61211, 1:1,000), Top panel: wild-type (WT); Bottom panel: Phospho-EGFR (Y1092) shRNA knockdown (KD). Nuclei were stained blue with DAPI; Phospho-EGFR (Y1092) was stained magenta with Alexa Fluor® 647. Scale bar, 20 μ m. Permeabilization: Triton.