

KD-Validated Anti-Integrin subunit alpha V Recombinant Rabbit Monoclonal Antibody



Catalog #: 61213

Aliases

ITGAV; Integrin Subunit Alpha V; CD51; MSK8; VNRA; VTNR; Integrin, Alpha V (Vitronectin Receptor, Alpha Polypeptide, Antigen CD51); Antigen Identified By Monoclonal Antibody L230; Vitronectin Receptor Subunit Alpha; Vitronectin Receptor; Integrin Alpha-V; Integrin AlphaVbeta3; Integrin, Alpha V; CD51 Antigen

Background

Gene Name: ITGAV

NCBI Gene Entry: [3685](#)

UniProt Entry: [P06756](#)

Application Information

Molecular Weight: Predicted, 116 kDa, observed, 125 kDa

Clonality: Rabbit monoclonal antibody

Clone ID: 23GB2240

Species Reactivity: Human, mouse, rat

Applications Tested: Western blotting (WB), flow cytometry (FCM), immunocytochemistry (IC), immunohistochemistry (IHC)

Immunogen

A synthesized peptide derived from human Integrin alpha V

Isotype

Rabbit IgG

Storage Buffer

Supplied in PBS (pH 7.4) containing 50% glycerol, and 0.02% sodium azide.

Storage

Store at -20 °C for one year.

Recommended Dilutions

Western Blotting (WB): 1:1,000-1:5,000

Flow Cytometry (FCM): 1:2,000

Immunocytochemistry (IC): 1:100-1:1,000

Immunohistochemistry (IHC): 1:50-1:100

SUPPORT

SUPPORT@GENUINBIOTECH.COM
TEL: +1-540-855-7041

ORDERS

SALES@GENUINBIOTECH.COM
FAX: +1-540-855-7041

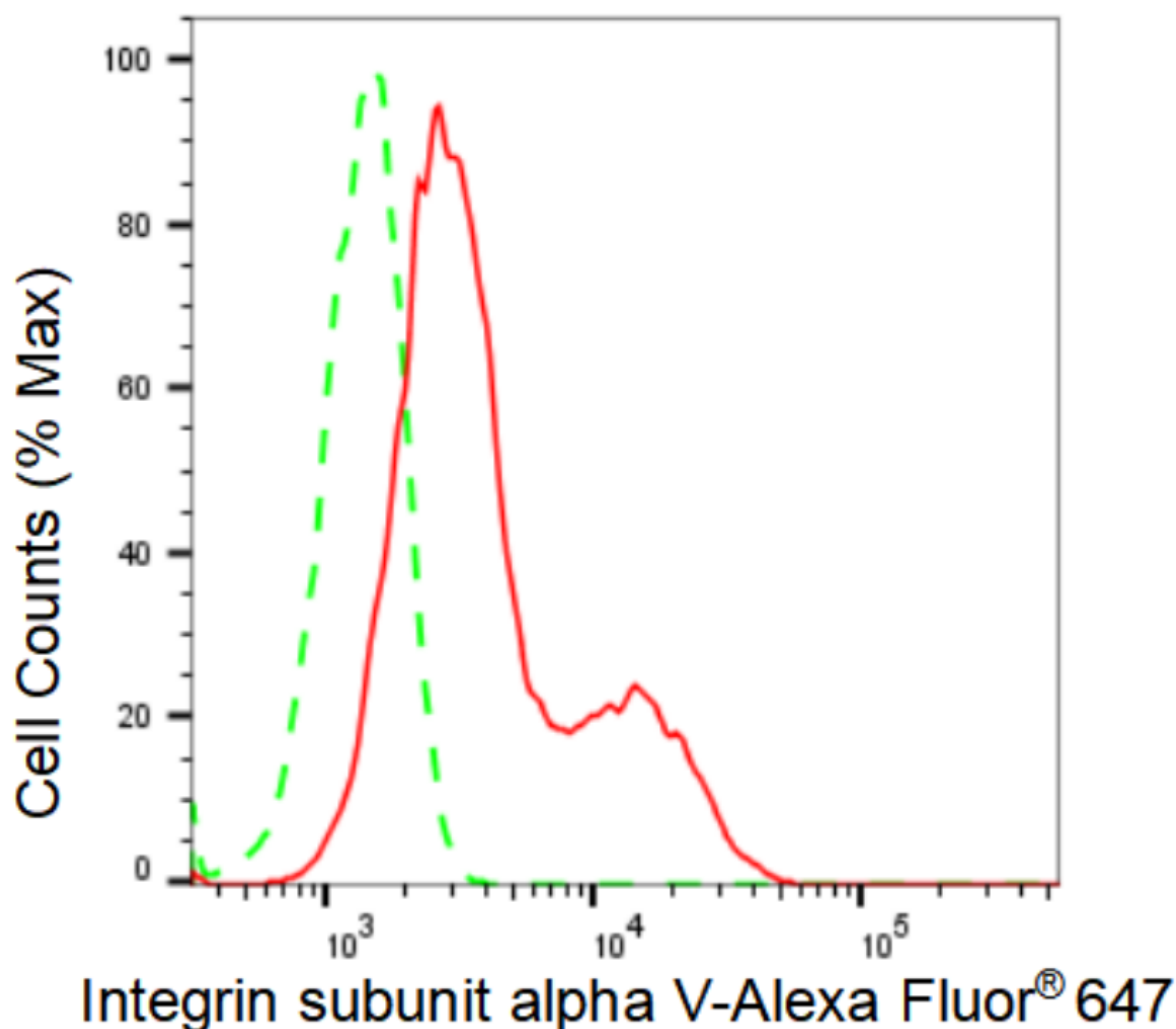
WWW.GENUINBIOTECH.COM

KD-Validated Anti-Integrin subunit alpha V Recombinant Rabbit Monoclonal Antibody

PAGE 2

Note: This product is for research use only.

Validation Data



Copyright ©2024 Genuin Biotechnologies LLC

Flow cytometric analysis of Integrin subunit alpha V expression in HeLa cells using Integrin subunit alpha V antibody (Cat#61213, 1:2,000). Green, isotype control; red, Integrin subunit alpha V.

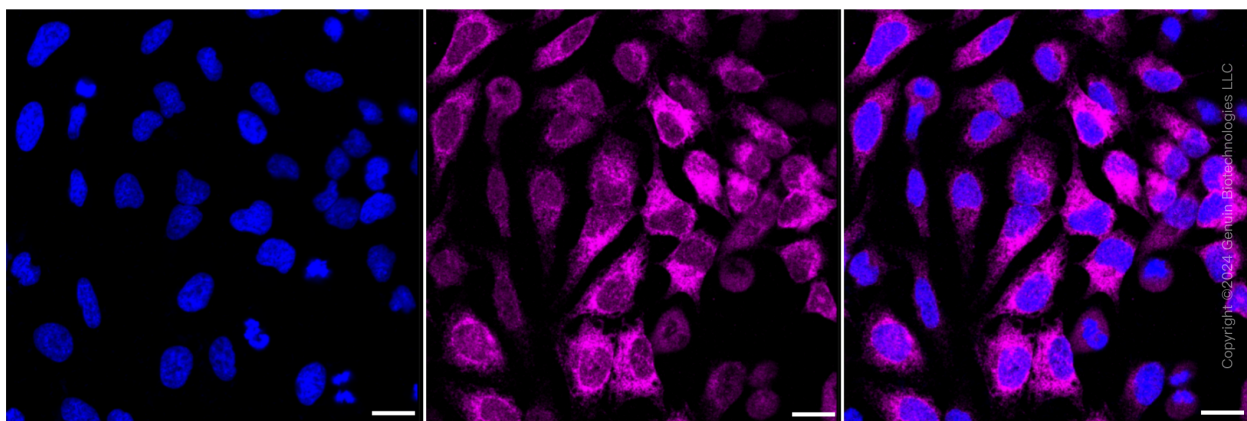
SUPPORT

SUPPORT@GENUINBIOTECH.COM
TEL: +1-540-855-7041

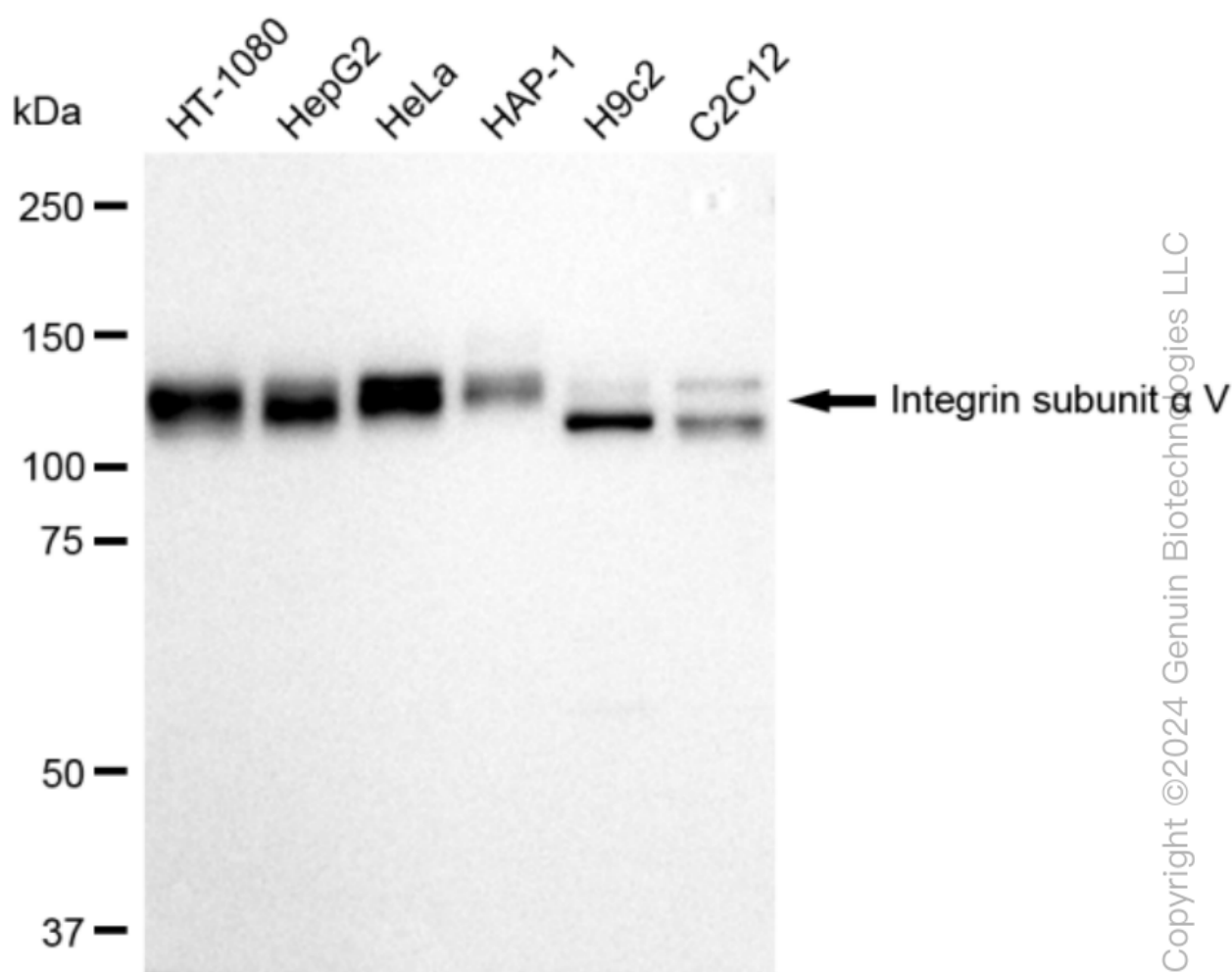
ORDERS

SALES@GENUINBIOTECH.COM
FAX: +1-540-855-7041

WWW.GENUINBIOTECH.COM



Immunocytochemical staining of HeLa cells with Integrin subunit alpha V antibody (Cat#61213, 1:1,000). Nuclei were stained blue with DAPI; Integrin subunit alpha V was stained magenta with Alexa Fluor® 647. Images were taken using Leica stellaris 5. Protein abundance based on laser Intensity and smart gain: Medium. Scale bar: 20 μ m.

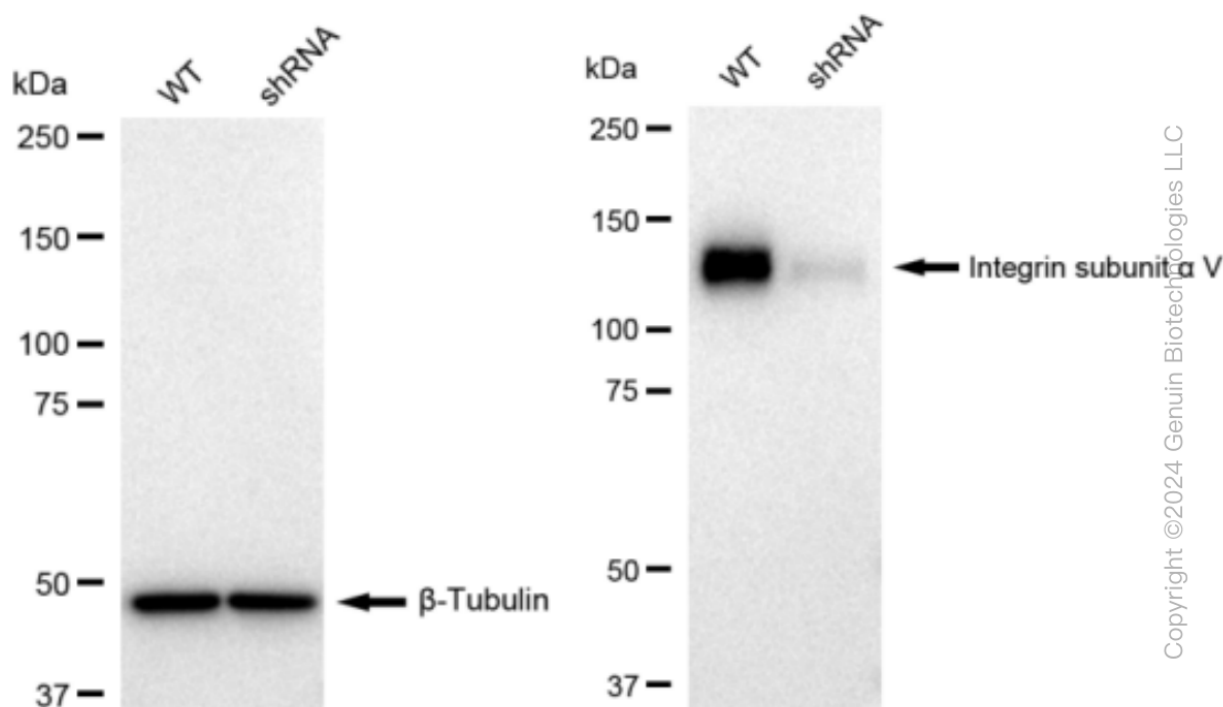


Western blotting analysis using anti-Integrin subunit alpha V antibody (Cat#61213). Total cell

KD-Validated Anti-Integrin subunit alpha V Recombinant Rabbit Monoclonal Antibody

PAGE 4

lysates (30 µg) from various cell lines were loaded and separated by SDS-PAGE. The blot was incubated with anti-Integrin subunit alpha V antibody (Cat#61213, 1:5,000) and HRP-conjugated goat anti-rabbit secondary antibody (Cat#201, 1:20,000) respectively. Image was developed using FeQ™ ECL Substrate Kit (Cat#226).



Western blotting analysis using anti-Integrin subunit alpha V antibody (Cat#61213). Integrin subunit alpha V expression in wild type (WT) and integrin subunit alpha V shRNA knockdown (KD) HeLa cells with 30 µg of total cell lysates. β -Tubulin serves as a loading control. The blot was incubated with anti-Integrin subunit alpha V antibody (Cat#61213, 1:5,000) and HRP-conjugated goat anti-rabbit secondary antibody (Cat#201, 1:20,000) respectively. Image was developed using FeQ™ ECL Substrate Kit (Cat#226).

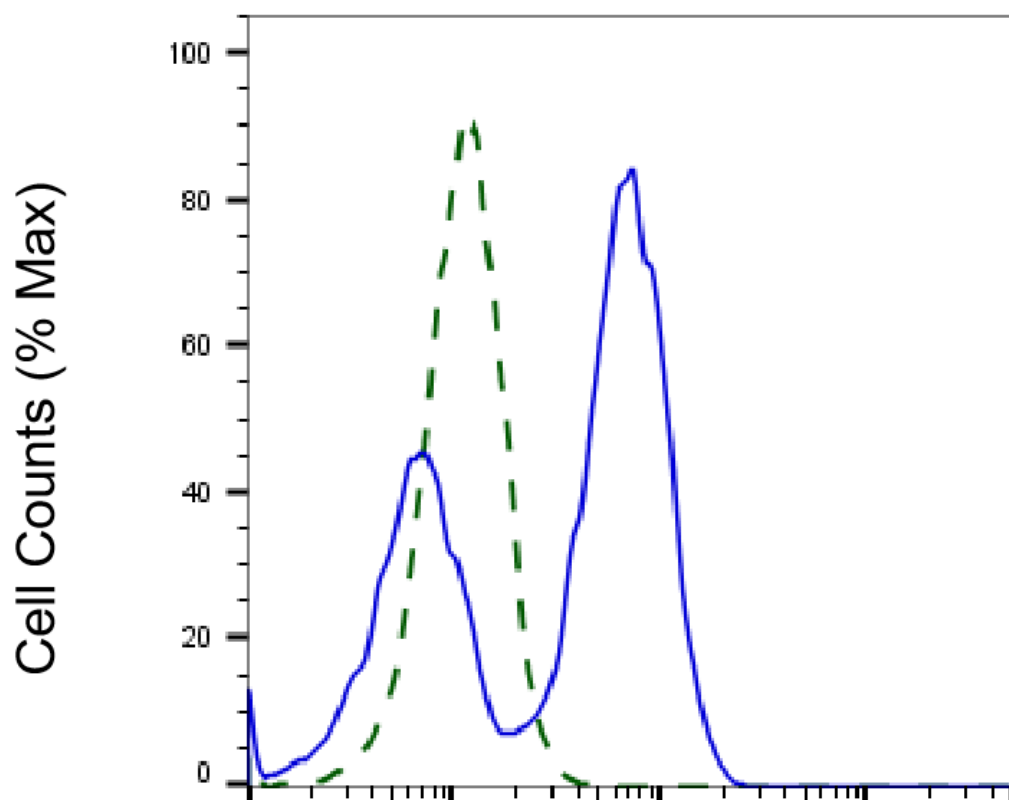
SUPPORT

SUPPORT@GENUINBIOTECH.COM
TEL: +1-540-855-7041

ORDERS

SALES@GENUINBIOTECH.COM
FAX: +1-540-855-7041

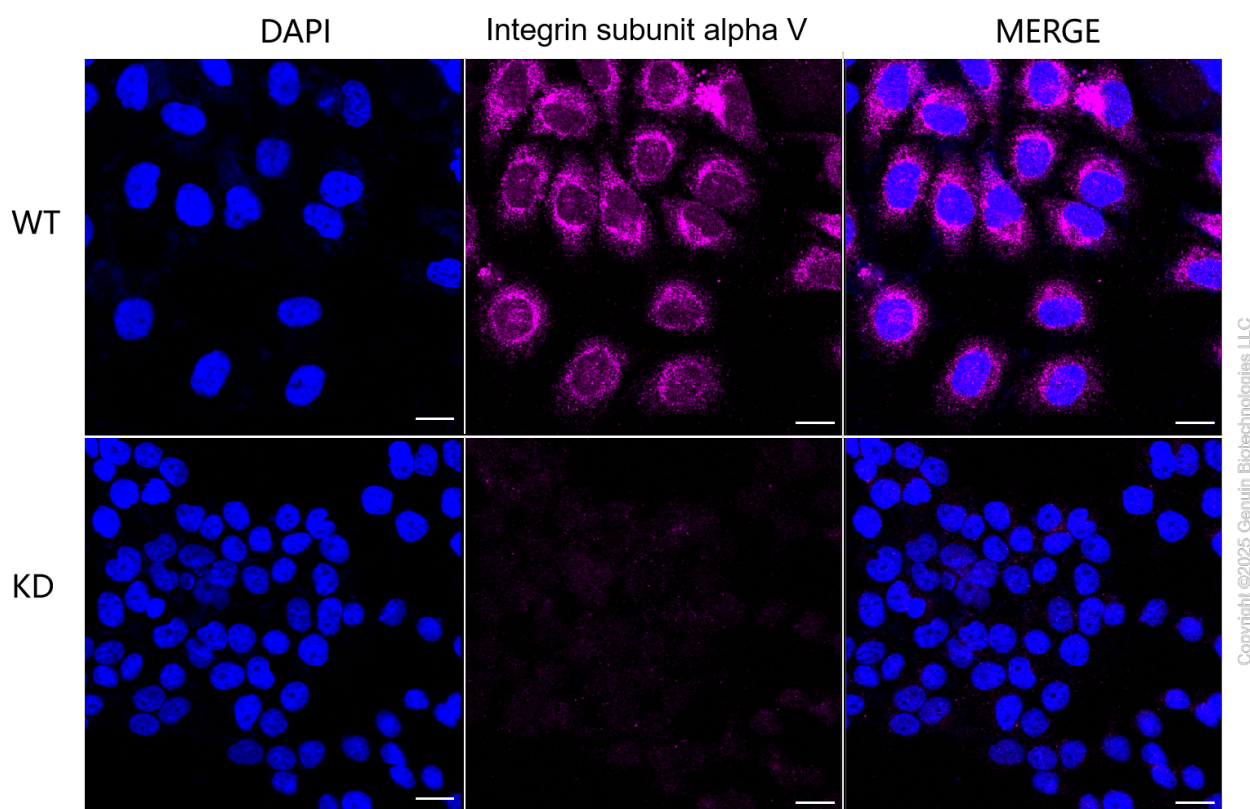
WWW.GENUINBIOTECH.COM



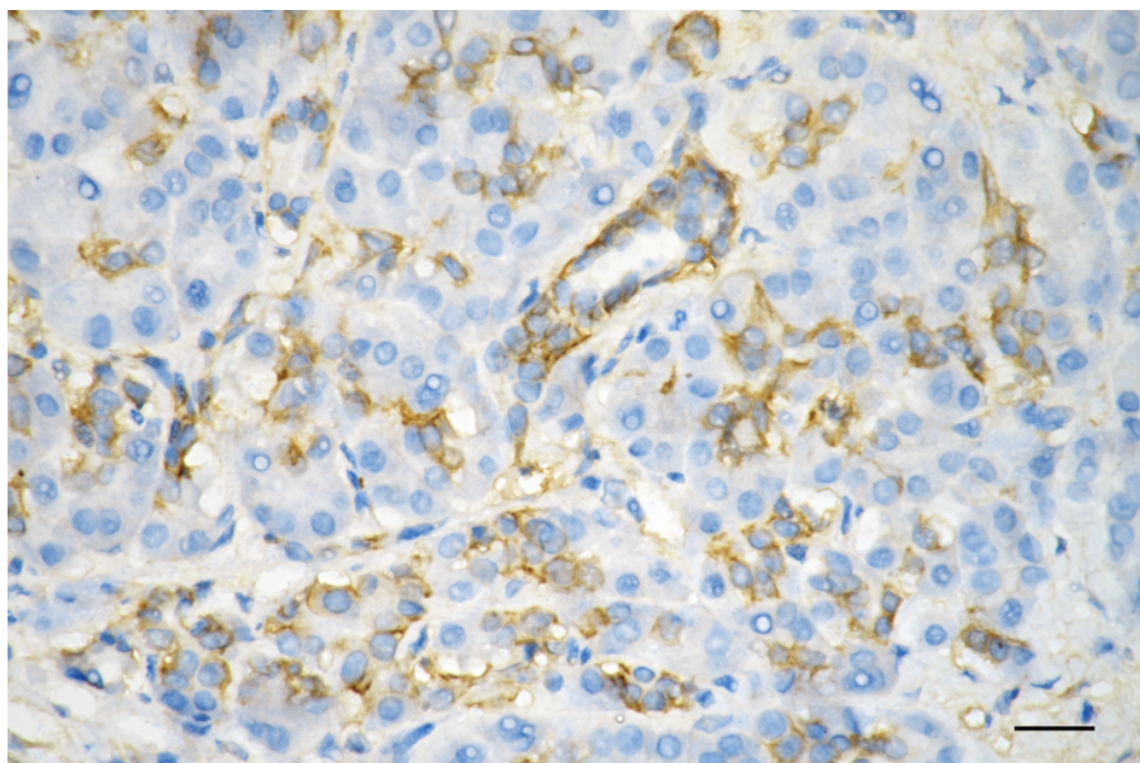
Copyright ©2025 Genuin Biotechnologies LLC

Integrin subunit alpha V-Alexa Fluor® 647

Validation of Integrin subunit alpha V knockdown using flow cytometry. Wild-type(WT, Blue) and knockdown(KD, Green) HeLa cells were stained with anti-Integrin subunit alpha V antibody (Cat#61213, 1:2,000) and analyzed using CytoFLEX.

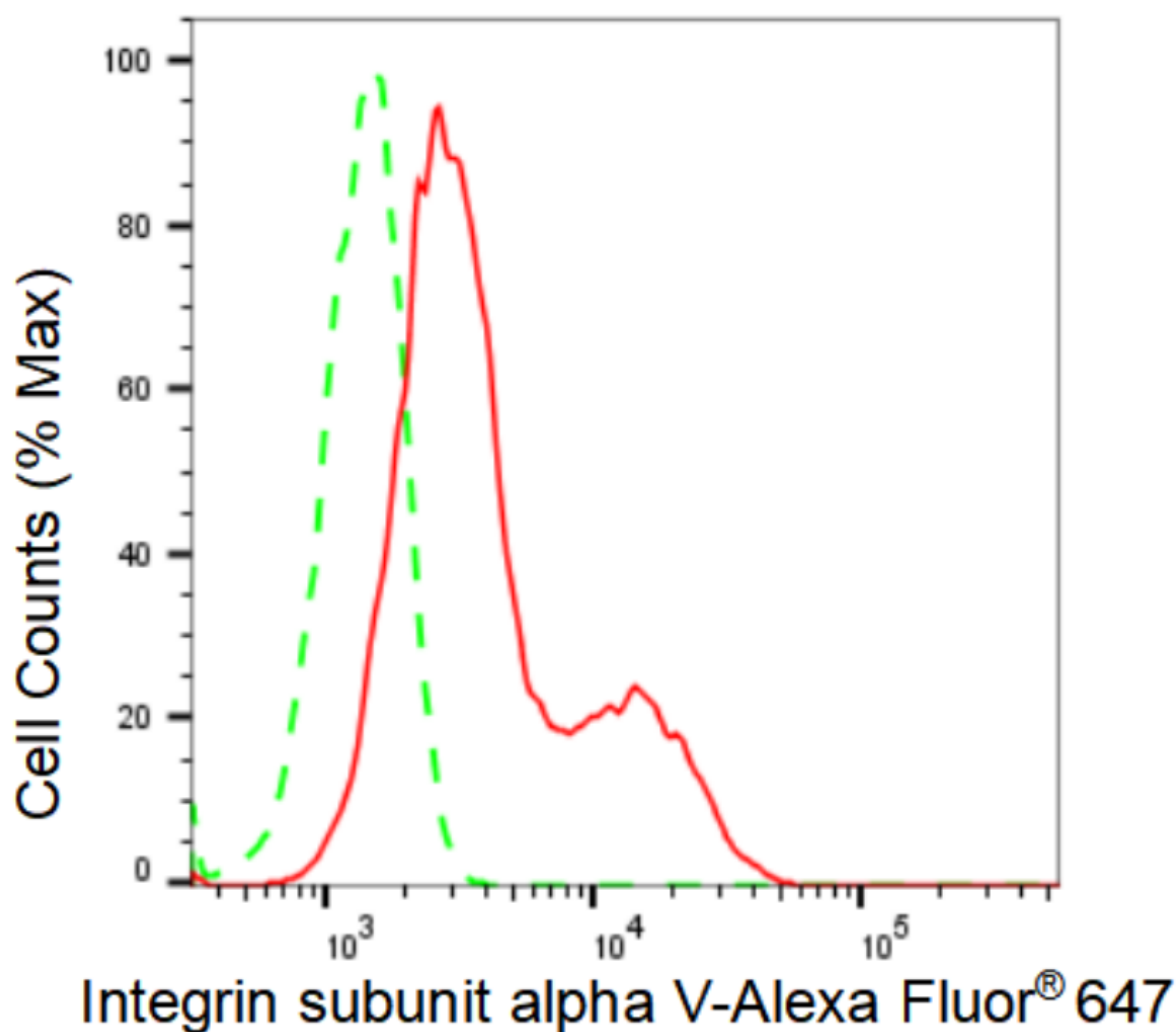


Immunocytochemical staining of HeLa cells using anti-Integrin subunit alpha V antibody (Cat#61213, 1:1,000), Top panel: wild-type (WT); Bottom panel: Integrin subunit alpha V shRNA knockdown (KD). Nuclei were stained blue with DAPI; Integrin subunit alpha V was stained magenta with Alexa Fluor® 647. Scale bar, 20 μ m. Permeabilization: Triton.

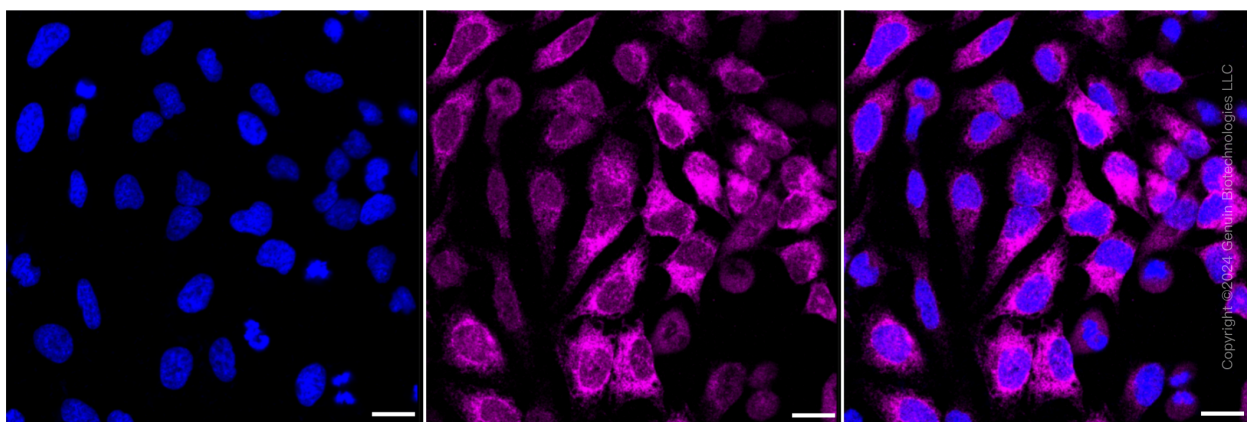


Copyright ©2025 Genuin Biotechnologies LLC

Immunohistochemistry was performed on paraffin-embedded human pancreatic adenocarcinoma using anti-integrin subunit alpha V antibody (Cat#61213, 1:100). Antigen retrieval was done in sodium citrate buffer (pH 6.0). DAB was used for detection, with hematoxylin counterstaining. Images were acquired using a Nikon Ci-L Plus microscope (40× objective). Scale bar: 25 μ m.



Flow cytometric analysis of Integrin subunit alpha V expression in HeLa cells using Integrin subunit alpha V antibody (Cat#61213, 1:2,000). Green, isotype control; red, Integrin subunit alpha V.



Immunocytochemical staining of HeLa cells with Integrin subunit alpha V antibody (Cat#61213, 1:1,000). Nuclei were stained blue with DAPI; Integrin subunit alpha V was stained magenta with

SUPPORT

SUPPORT@GENUINBIOTECH.COM
TEL: +1-540-855-7041

ORDERS

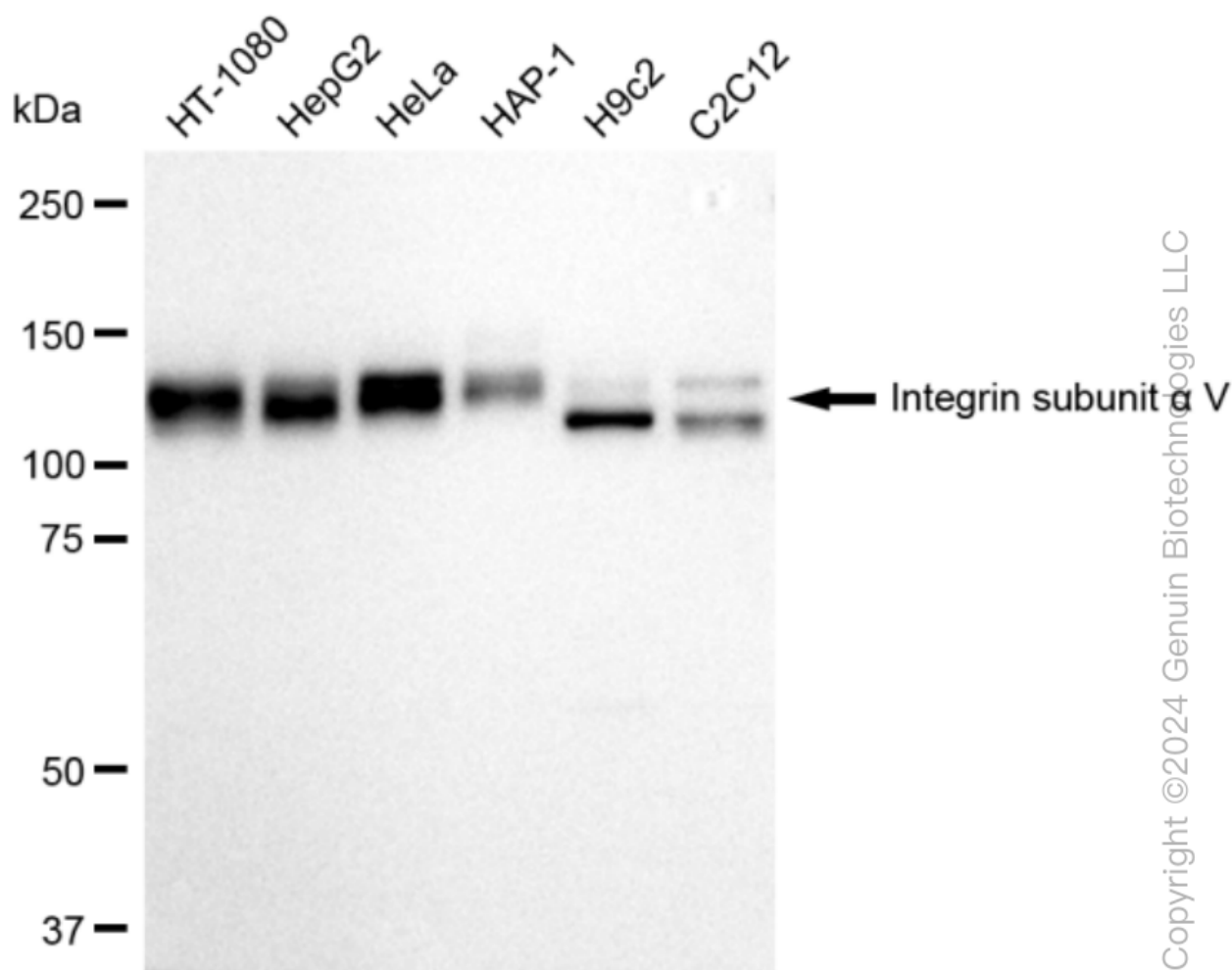
SALES@GENUINBIOTECH.COM
FAX: +1-540-855-7041

WWW.GENUINBIOTECH.COM

KD-Validated Anti-Integrin subunit alpha V Recombinant Rabbit Monoclonal Antibody

PAGE 9

Alexa Fluor® 647. Images were taken using Leica stellaris 5. Protein abundance based on laser Intensity and smart gain: Medium. Scale bar: 20 µm.



Copyright ©2024 Genuin Biotechnologies LLC

Western blotting analysis using anti-Integrin subunit alpha V antibody (Cat#61213). Total cell lysates (30 µg) from various cell lines were loaded and separated by SDS-PAGE. The blot was incubated with anti-Integrin subunit alpha V antibody (Cat#61213, 1:5,000) and HRP-conjugated goat anti-rabbit secondary antibody (Cat#201, 1:20,000) respectively. Image was developed using FeQ™ ECL Substrate Kit (Cat#226).

SUPPORT

SUPPORT@GENUINBIOTECH.COM
TEL: +1-540-855-7041

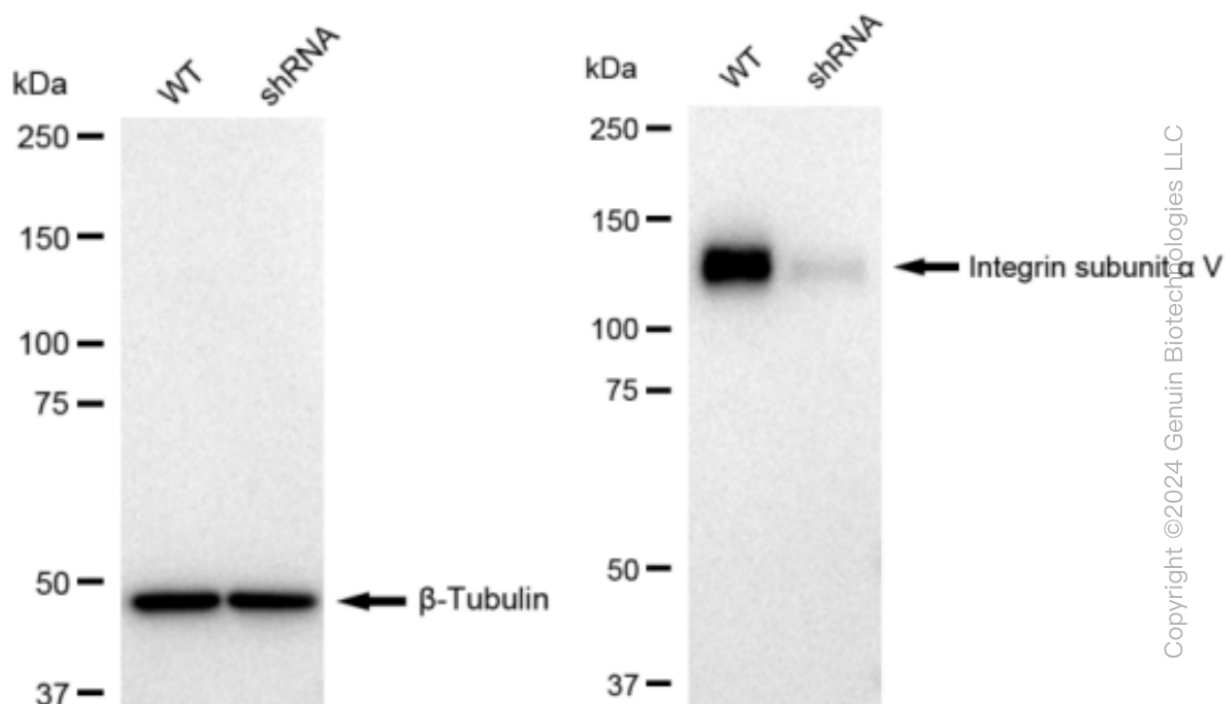
ORDERS

SALES@GENUINBIOTECH.COM
FAX: +1-540-855-7041

WWW.GENUINBIOTECH.COM

KD-Validated Anti-Integrin subunit alpha V Recombinant Rabbit Monoclonal Antibody

PAGE 10



Western blotting analysis using anti-Integrin subunit alpha V antibody (Cat#61213). Integrin subunit alpha V expression in wild type (WT) and integrin subunit alpha V shRNA knockdown (KD) HeLa cells with 30 μ g of total cell lysates. β -Tubulin serves as a loading control. The blot was incubated with anti-Integrin subunit alpha V antibody (Cat#61213, 1:5,000) and HRP-conjugated goat anti-rabbit secondary antibody (Cat#201, 1:20,000) respectively. Image was developed using FeQ™ ECL Substrate Kit (Cat#226).

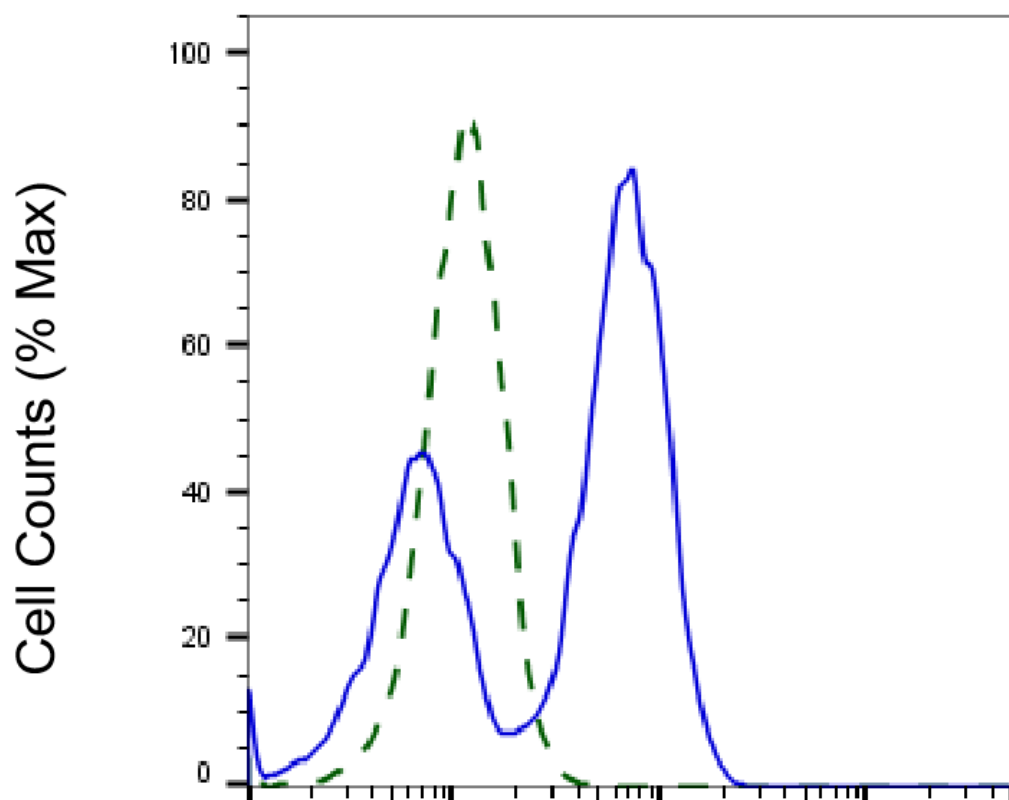
SUPPORT

SUPPORT@GENUINBIOTECH.COM
TEL: +1-540-855-7041

ORDERS

SALES@GENUINBIOTECH.COM
FAX: +1-540-855-7041

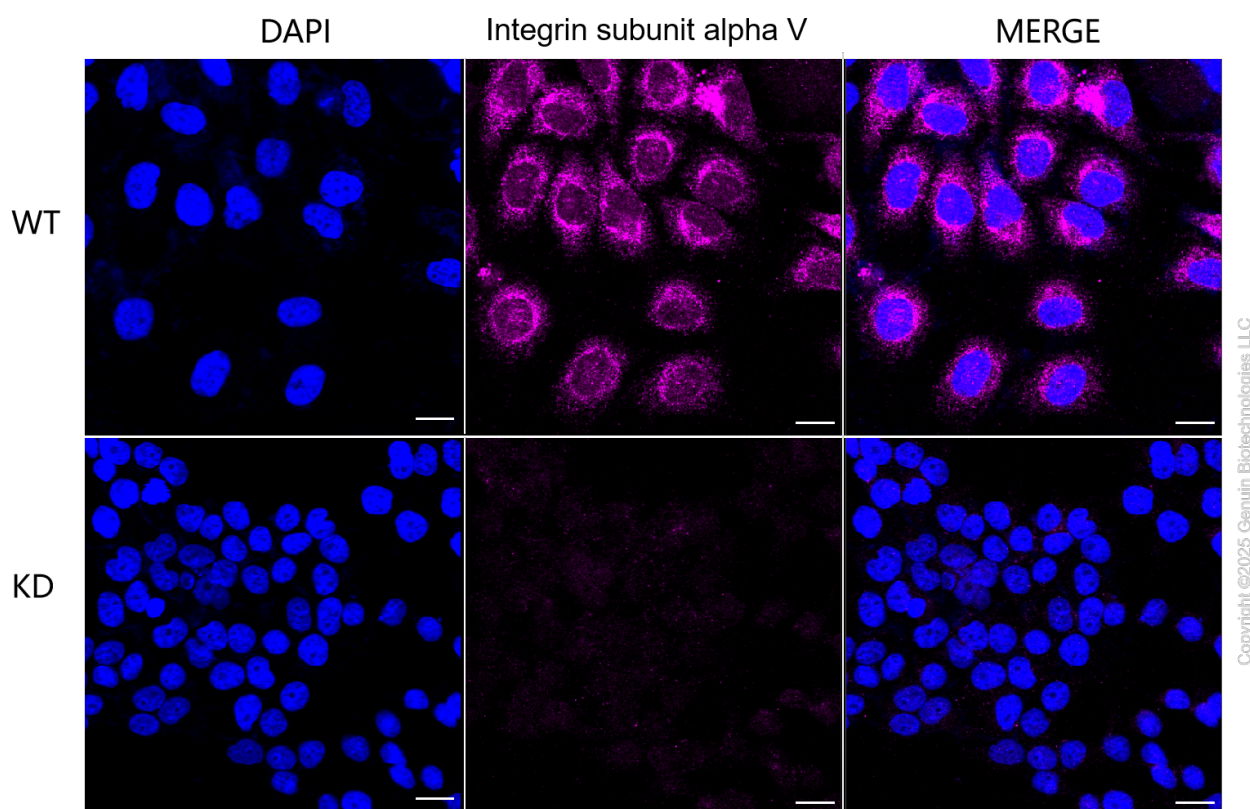
WWW.GENUINBIOTECH.COM



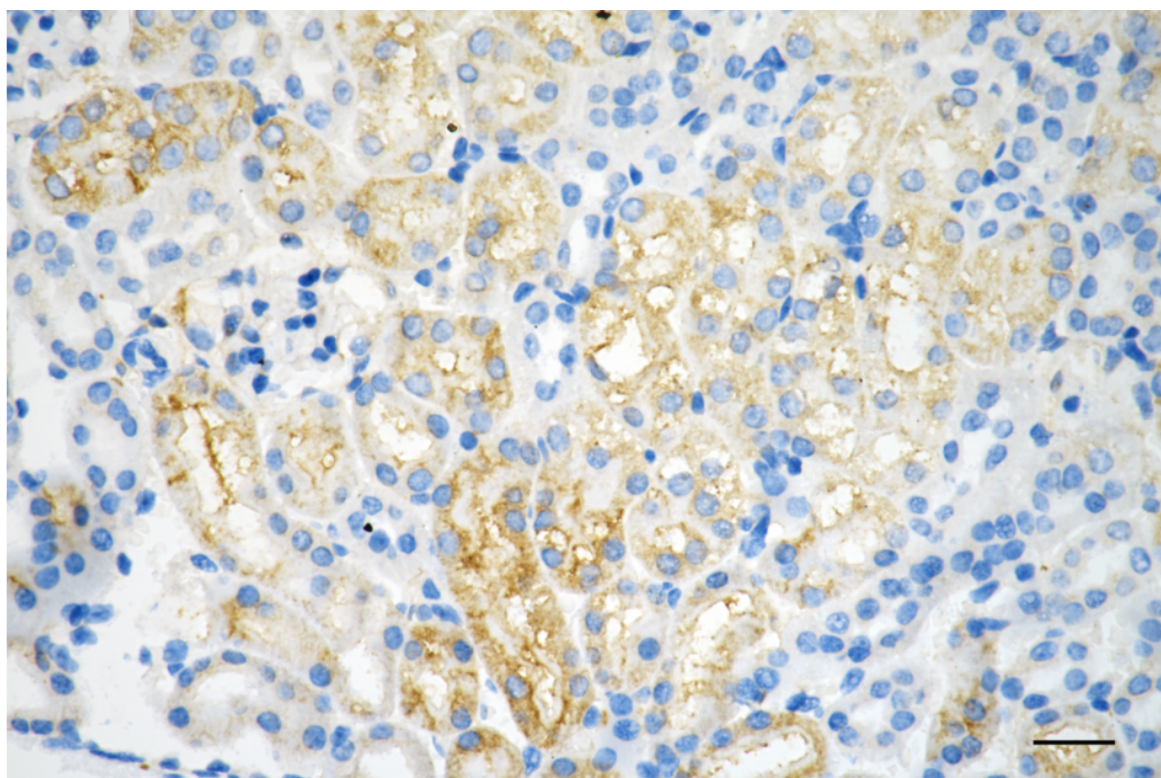
Copyright ©2025 Genuin Biotechnologies LLC

Integrin subunit alpha V-Alexa Fluor® 647

Validation of Integrin subunit alpha V knockdown using flow cytometry. Wild-type(WT, Blue) and knockdown(KD, Green) HeLa cells were stained with anti-Integrin subunit alpha V antibody (Cat#61213, 1:2,000) and analyzed using CytoFLEX.



Immunocytochemical staining of HeLa cells using anti-Integrin subunit alpha V antibody (Cat#61213, 1:1,000), Top panel: wild-type (WT); Bottom panel: Integrin subunit alpha V shRNA knockdown (KD). Nuclei were stained blue with DAPI; Integrin subunit alpha V was stained magenta with Alexa Fluor® 647. Scale bar, 20 μ m. Permeabilization: Triton.



Copyright ©2025 Genuin Biotechnologies LLC

Immunohistochemistry was performed on paraffin-embedded mouse kidney using anti-integrin subunit alpha V antibody (Cat#61213, 1:200). Antigen retrieval was done in sodium citrate buffer (pH 6.0). DAB was used for detection, with hematoxylin counterstaining. Images were acquired using a Nikon Ci-L Plus microscope (40× objective). Scale bar: 25 μ m.