

KD-Validated Anti-Ubiquitin specific peptidase 7 Recombinant Rabbit Monoclonal Antibody



Catalog #: 61216

Aliases

USP7; Ubiquitin Specific Peptidase 7; HAUSP; Ubiquitin Specific Peptidase 7 (Herpes Virus-Associated); Ubiquitin-Specific-Processing Protease 7; Ubiquitin Carboxyl-Terminal Hydrolase 7; Deubiquitinating Enzyme 7; Ubiquitin Thioesterase 7; Ubiquitin Specific Protease 7 (Herpes Virus-Associated); Herpes Virus-Associated Ubiquitin-Specific Protease; Herpesvirus-Associated; Ubiquitin-Specific Protease; Chromosome 16p13.2 Deletion Syndrome; EC 3.4.19.12; C16DELp13.2; EC 3.1.2.15; DEL16P13.2; HAFOUS; TEF1

Background

Gene Name: USP7

NCBI Gene Entry: [7874](#)

UniProt Entry: [Q93009](#)

Application Information

Molecular Weight: Predicted, 128 kDa, observed, 128 kDa

Clonality: Rabbit monoclonal antibody

Clone ID: 23GB2250

Species Reactivity: Human, mouse, rat

Applications Tested: Western blotting (WB), flow cytometry (FCM), immunocytochemistry (IC)

Immunogen

A synthesized peptide derived from human HAUSP / USP7

Isotype

Rabbit IgG

Storage Buffer

Supplied in PBS (pH 7.4) containing 50% glycerol, and 0.02% sodium azide.

Storage

Store at -20 °C for one year.

Recommended Dilutions

Western Blotting (WB): 1:1,000-1:5,000

Flow Cytometry (FCM): 1:2,000

Immunocytochemistry (IC): 1:100-1:1,000

SUPPORT

SUPPORT@GENUINBIOTECH.COM
TEL: +1-540-855-7041

ORDERS

SALES@GENUINBIOTECH.COM
FAX: +1-540-855-7041

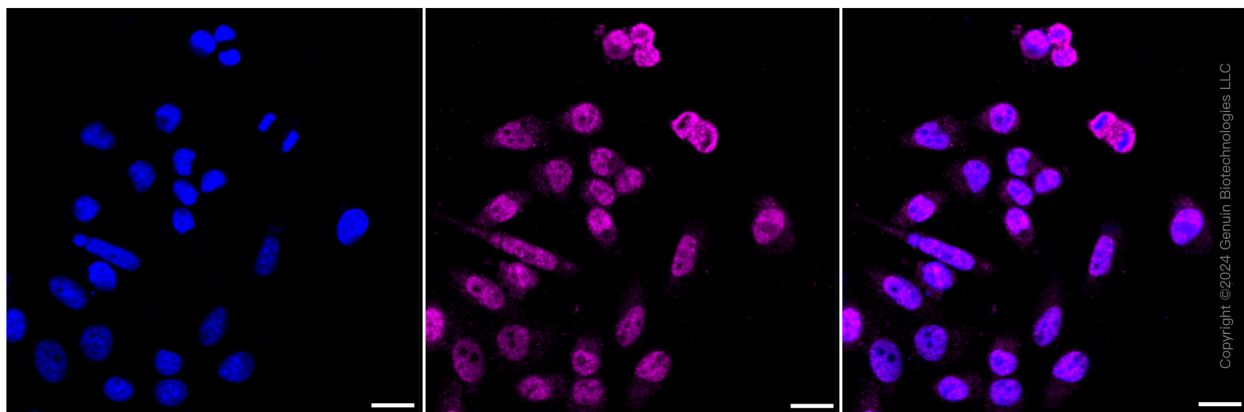
WWW.GENUINBIOTECH.COM

KD-Validated Anti-Ubiquitin specific peptidase 7 Recombinant Rabbit Monoclonal Antibody

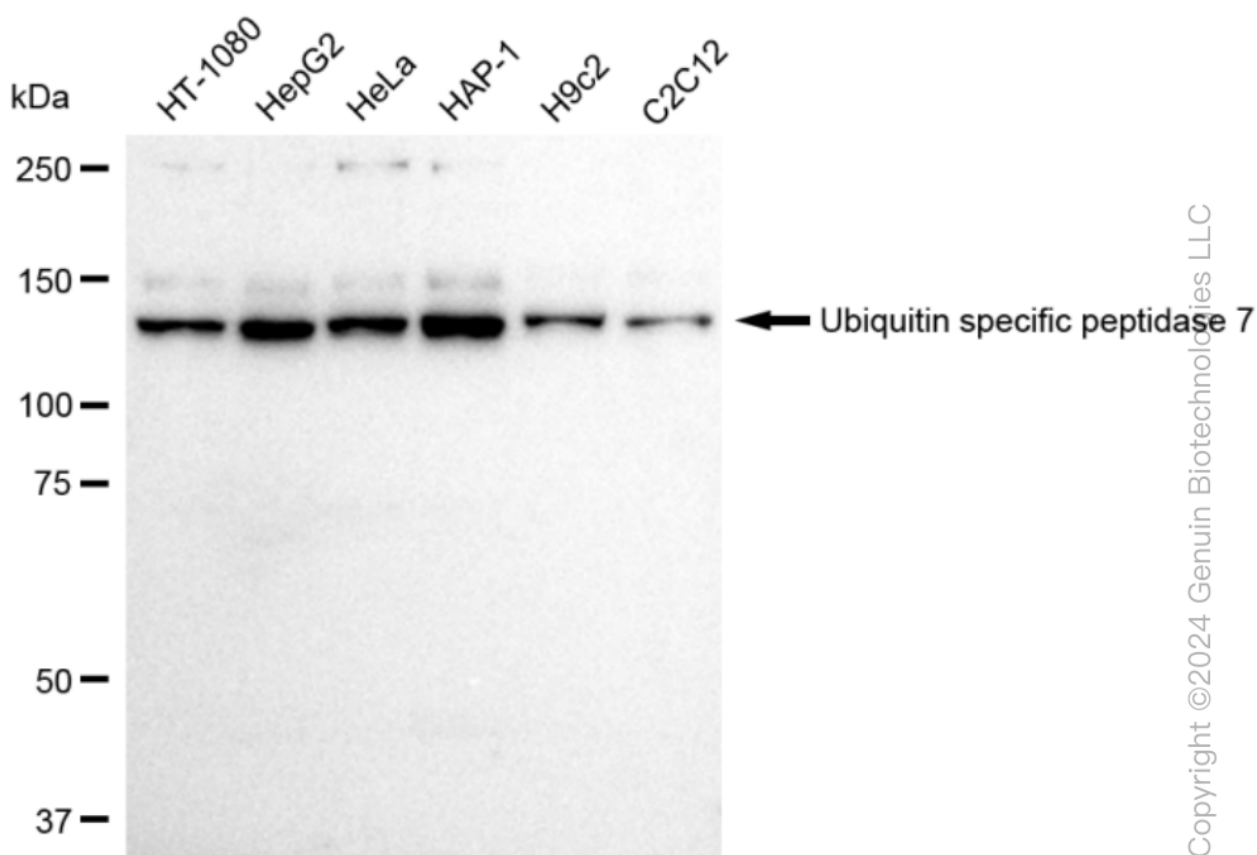
PAGE 2

Note: This product is for research use only.

Validation Data



Immunocytochemical staining of HepG2 cells with Ubiquitin specific peptidase 7 antibody (Cat#61216, 1:1,000). Nuclei were stained blue with DAPI; Ubiquitin specific peptidase 7 was stained magenta with Alexa Fluor® 647. Images were taken using Leica stellaris 5. Protein abundance based on laser Intensity and smart gain: Medium. Scale bar: 20 μ m.



Western blotting analysis using anti-Ubiquitin specific peptidase 7 antibody (Cat#61216). Total

SUPPORT

SUPPORT@GENUINBIOTECH.COM
TEL: +1-540-855-7041

ORDERS

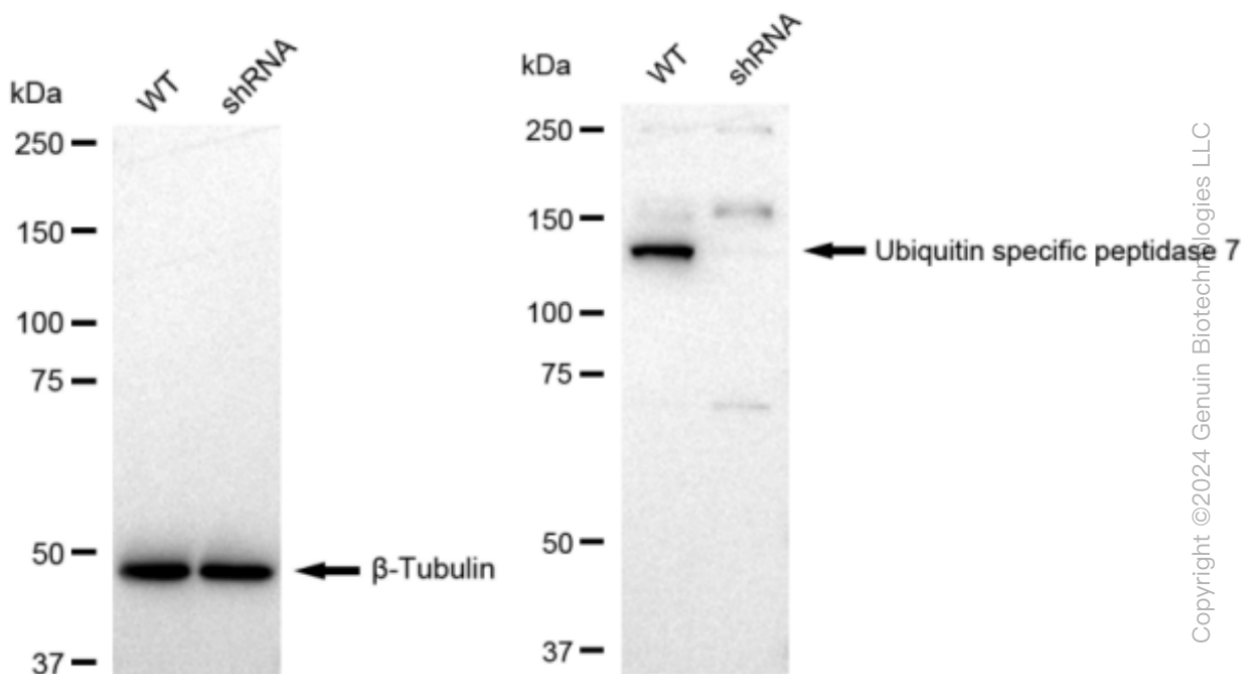
SALES@GENUINBIOTECH.COM
FAX: +1-540-855-7041

WWW.GENUINBIOTECH.COM

KD-Validated Anti-Ubiquitin specific peptidase 7 Recombinant Rabbit Monoclonal Antibody

PAGE 3

cell lysates (30 µg) from various cell lines were loaded and separated by SDS-PAGE. The blot was incubated with anti-Ubiquitin specific peptidase 7 antibody (Cat#61216, 1:5,000) and HRP-conjugated goat anti-rabbit secondary antibody (Cat#201, 1:20,000) respectively. Image was developed using FeQ™ ECL Substrate Kit (Cat#226).



Western blotting analysis using anti-Ubiquitin specific peptidase 7 antibody (Cat#61216). Ubiquitin specific peptidase 7 expression in wild type (WT) and ubiquitin specific peptidase 7 shRNA knockdown (KD) HeLa cells with 30 µg of total cell lysates. β-Tubulin serves as a loading control. The blot was incubated with anti-Ubiquitin specific peptidase 7 antibody (Cat#61216, 1:5,000) and HRP-conjugated goat anti-rabbit secondary antibody (Cat#201, 1:20,000) respectively. Image was developed using FeQ™ ECL Substrate Kit (Cat#226).

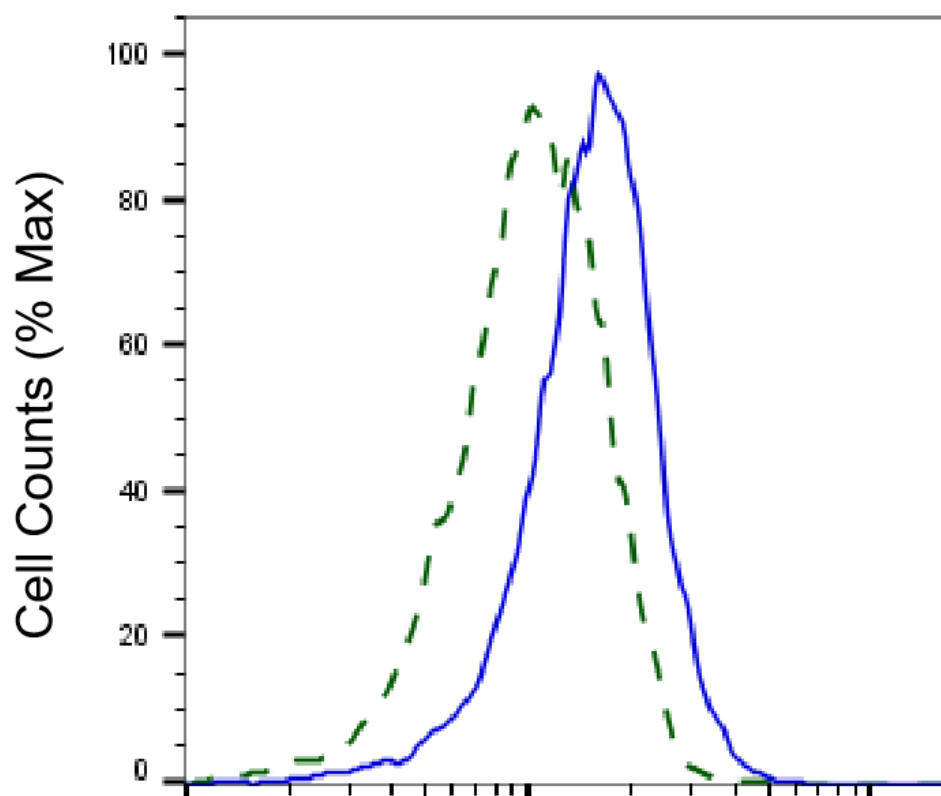
SUPPORT

SUPPORT@GENUINBIOTECH.COM
TEL: +1-540-855-7041

ORDERS

SALES@GENUINBIOTECH.COM
FAX: +1-540-855-7041

WWW.GENUINBIOTECH.COM



Copyright ©2025 Genuin Biotechnologies LLC

Ubiquitin specific peptidase 7-Alexa Fluor® 647

Validation of Ubiquitin specific peptidase 7 knockdown using flow cytometry. Wild-type(WT, Blue) and knockdown(KD, Green) HeLa cells were stained with anti-Ubiquitin specific peptidase 7 antibody (Cat#61216, 1:2,000) and analyzed using BD flow cytometer.