

KD-Validated Anti-ARAF Recombinant Rabbit Monoclonal Antibody



Catalog #: 61218

Aliases

ARAF; A-Raf Proto-Oncogene, Serine/Threonine Kinase; ARAF1; V-Raf Murine Sarcoma 3611 Viral Oncogene Homolog 1; Serine/Threonine-Protein Kinase A-Raf; Proto-Oncogene A-Raf-1; Proto-Oncogene Pks; EC 2.7.11.1; A-Raf; PKS2; V-Raf Murine Sarcoma 3611 Viral Oncogene-Like Protein; A-Raf Proto-Oncogene Serine/Threonine-Protein Kinase; Ras-Binding Protein DA-Raf; Proto-Oncogene A-Raf; Oncogene ARAF1; EC 2.7.11; RAFA1; PKS

Background

Gene Name: ARAF

NCBI Gene Entry: [369](#)

UniProt Entry: [P10398](#)

Application Information

Molecular Weight: Predicted, 68 kDa, observed, 68 kDa

Clonality: Rabbit monoclonal antibody

Clone ID: 25GB440

Species Reactivity: Human

Applications Tested: Western blotting (WB), flow cytometry (FCM)

Immunogen

A synthesized peptide derived from human A-RAF

Isotype

Rabbit IgG

Storage Buffer

Supplied in PBS (pH 7.4) containing 50% glycerol, and 0.02% sodium azide.

Storage

Store at -20 °C for one year.

Recommended Dilutions

Western Blotting (WB): 1:1,000-1:5,000

Flow Cytometry (FCM): 1:2,000

SUPPORT

SUPPORT@GENUINBIOTECH.COM
TEL: +1-540-855-7041

ORDERS

SALES@GENUINBIOTECH.COM
FAX: +1-540-855-7041

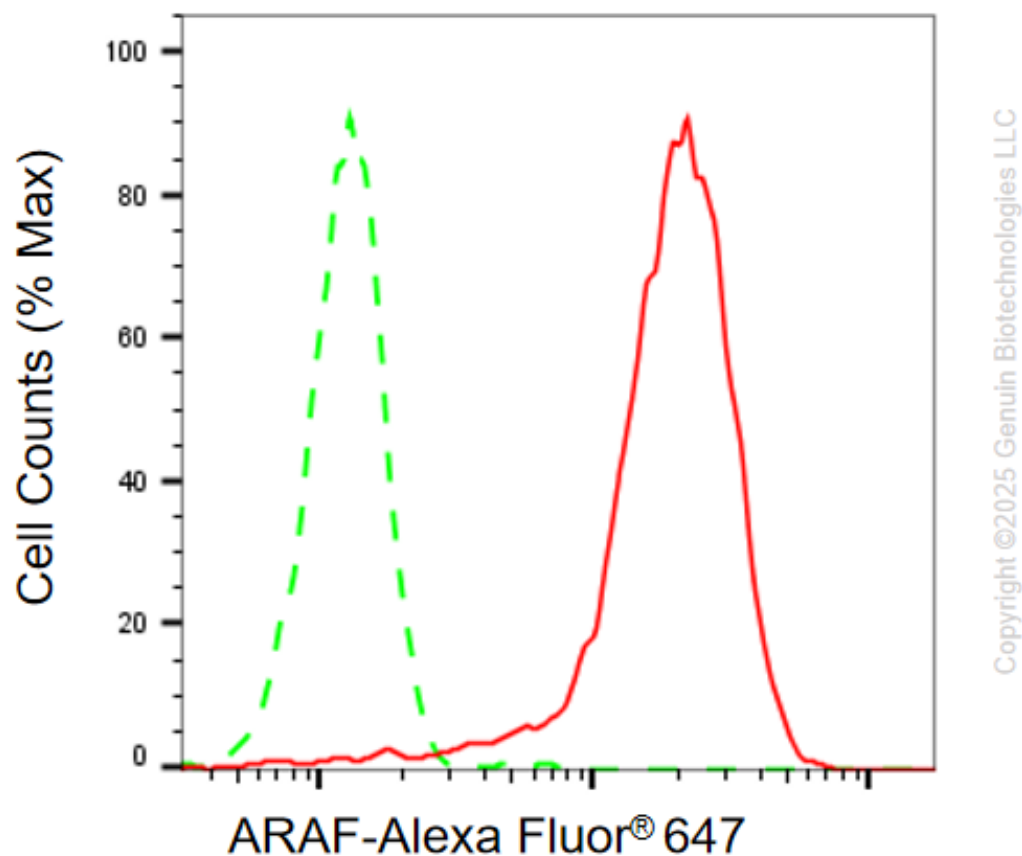
WWW.GENUINBIOTECH.COM

KD-Validated Anti-ARAF Recombinant Rabbit Monoclonal Antibody

PAGE 2

Note: This product is for research use only.

Validation Data



Flow cytometric analysis of ARAF expression in HepG2 cells using anti-ARAF antibody (Cat# 61218, 1:2,000). Green, isotype control; red, ARAF.

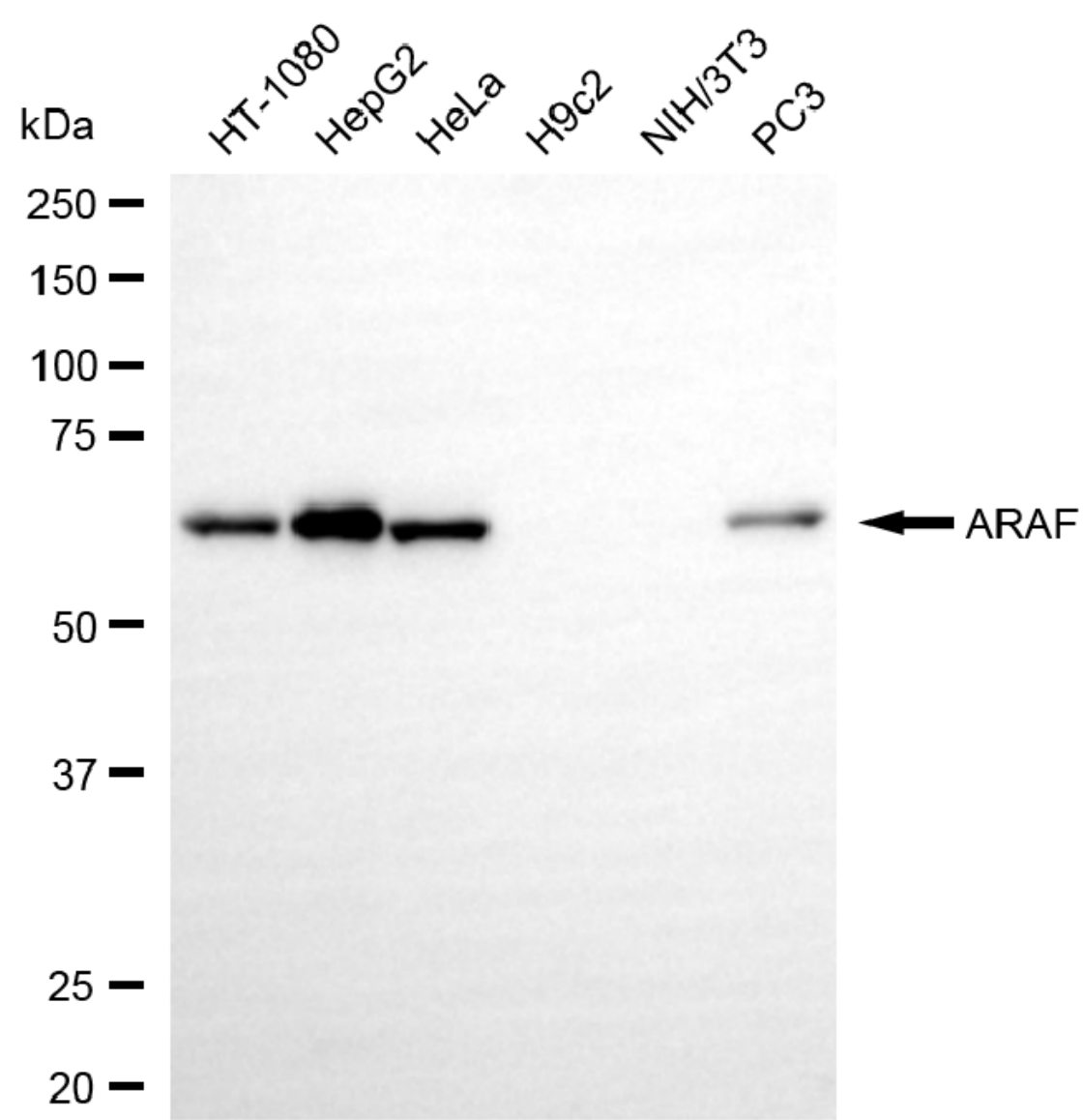
SUPPORT

SUPPORT@GENUINBIOTECH.COM
TEL: +1-540-855-7041

ORDERS

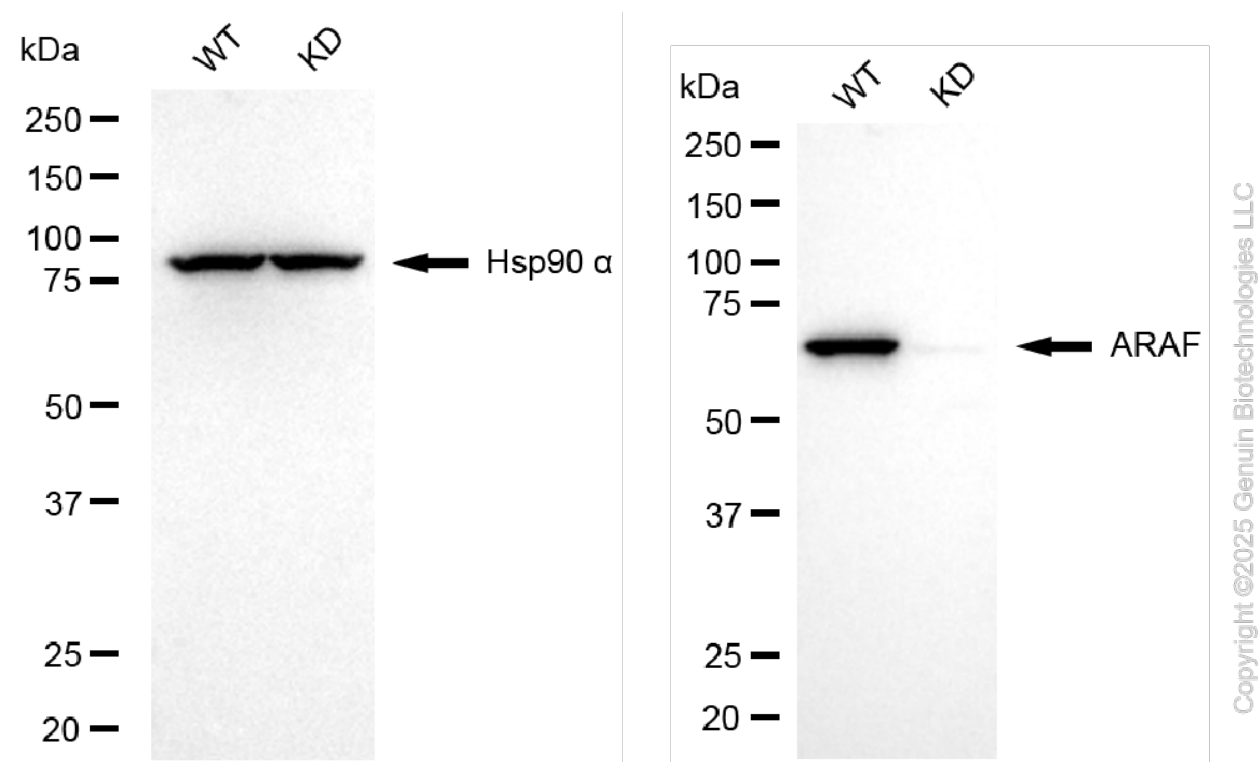
SALES@GENUINBIOTECH.COM
FAX: +1-540-855-7041

WWW.GENUINBIOTECH.COM



Copyright ©2025 Genuin Biotechnologies LLC

Western blotting analysis using anti-ARAF antibody (Cat#61218). Total cell lysates (30 µg) from various cell lines were loaded and separated by SDS-PAGE. The blot was incubated with anti-ARAF antibody (Cat#61218, 1:5,000) and HRP-conjugated goat anti-rabbit secondary antibody (Cat#201, 1:20,000) respectively. Image was developed using NaQ™ ECL Substrate Kit (Cat#716).



Western blotting analysis using anti-ARAF antibody (Cat#61218). ARAF expression in wild type (WT) and ARAF knockdown (KD) HSHC cells with 20 μ g of total cell lysates. Hsp90 α serves as a loading control. The blot was incubated with anti-ARAF antibody (Cat#61218, 1:5,000) and HRP-conjugated goat anti-rabbit secondary antibody (Cat#201, 1:20,000) respectively. Image was developed using NaQTM ECL Substrate Kit (Cat#716).