

# KD-Validated Anti-Interferon Regulatory Factor 3 Recombinant Rabbit Monoclonal



**Catalog #: 61219**

## Aliases

IRF3; Interferon Regulatory Factor 3; IIAE7; IRF-3

## Background

Gene Name: IRF3

NCBI Gene Entry: [3661](#)

UniProt Entry: [Q14653](#)

## Application Information

Molecular Weight: Predicted, 47 kDa, observed, 57 kDa

Clonality: Rabbit monoclonal antibody

Clone ID: 25GB445

Species Reactivity: Human

Applications Tested: Western blotting (WB), flow cytometry (FCM)

## Immunogen

A synthesized peptide derived from human IRF3

## Isotype

Rabbit IgG

## Storage Buffer

Supplied in PBS (pH 7.4) containing 50% glycerol, and 0.02% sodium azide.

## Storage

Store at -20 °C for one year.

## Recommended Dilutions

Western Blotting (WB): 1:1,000-1:5,000

Flow Cytometry (FCM): 1:2,000

**Note:** This product is for research use only.

## Validation Data

---

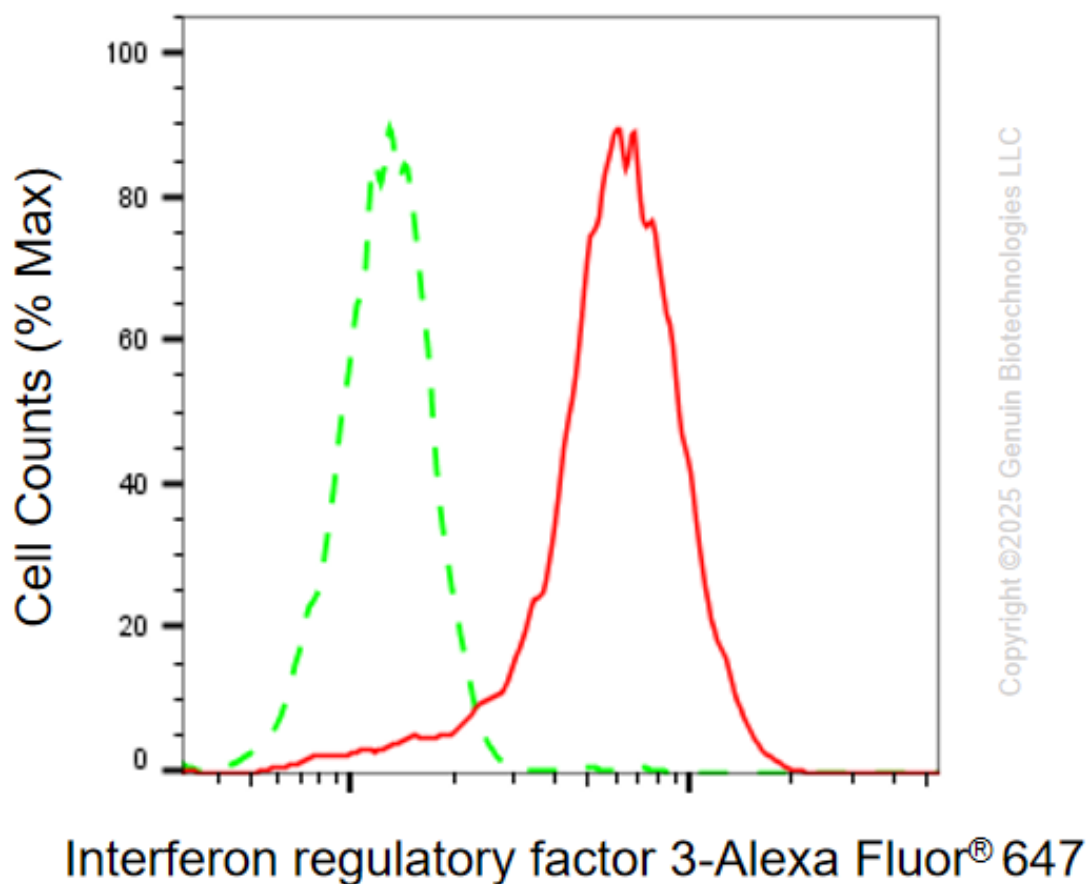
### SUPPORT

SUPPORT@GENUINBIOTECH.COM  
TEL: +1-540-855-7041

### ORDERS

SALES@GENUINBIOTECH.COM  
FAX: +1-540-855-7041

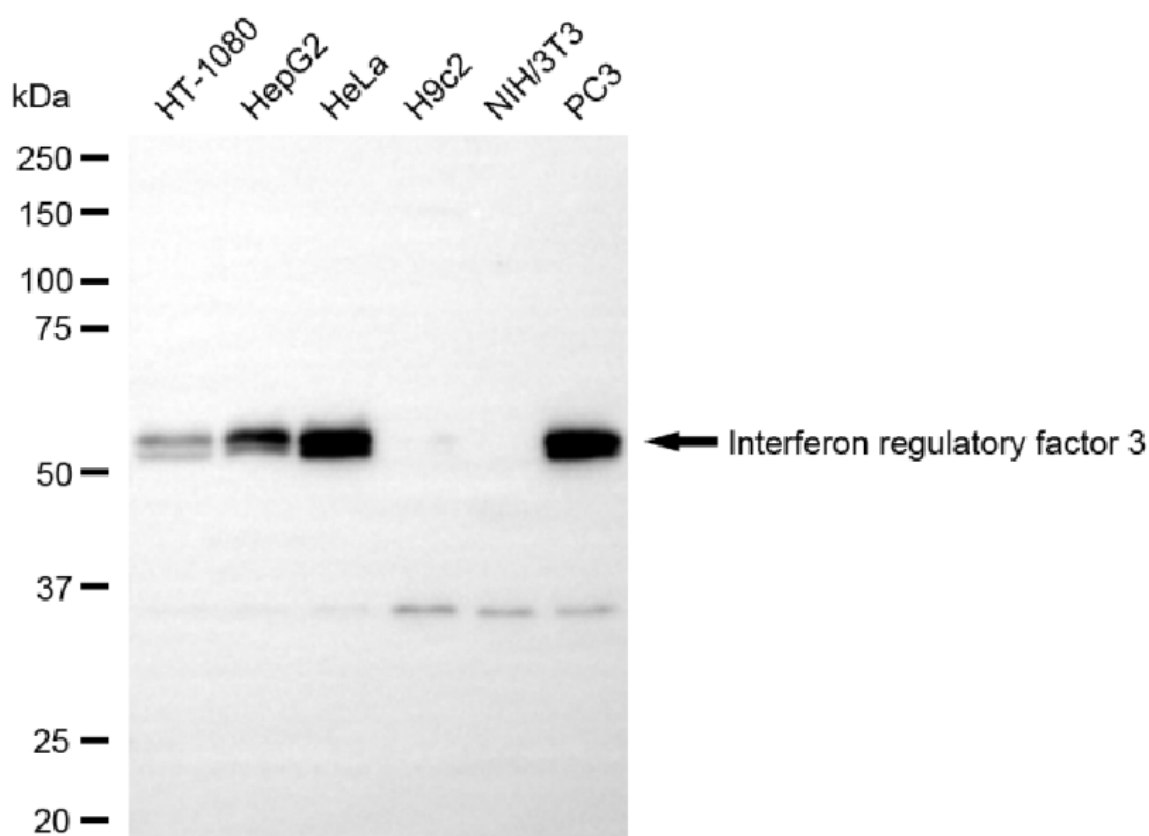
[WWW.GENUINBIOTECH.COM](http://WWW.GENUINBIOTECH.COM)



Flow cytometric analysis of Interferon regulatory factor 3 expression in HepG2 cells using anti-Interferon regulatory factor 3 antibody (Cat# 61219, 1:2,000). Green, isotype control; red, Interferon regulatory factor 3.

## KD-Validated Anti-Interferon Regulatory Factor 3 Recombinant Rabbit Monoclonal

PAGE 3



Copyright ©2025 Genuin Biotechnologies LLC

Western blotting analysis using anti-Interferon regulatory factor 3 antibody (Cat#61219). Total cell lysates (30  $\mu$ g) from various cell lines were loaded and separated by SDS-PAGE. The blot was incubated with anti-Interferon regulatory factor 3 antibody (Cat#61219, 1:5,000) and HRP-conjugated goat anti-rabbit secondary antibody (Cat#201, 1:20,000) respectively. Image was developed using NaQ<sup>TM</sup> ECL Substrate Kit (Cat#716).

### SUPPORT

SUPPORT@GENUINBIOTECH.COM  
TEL: +1-540-855-7041

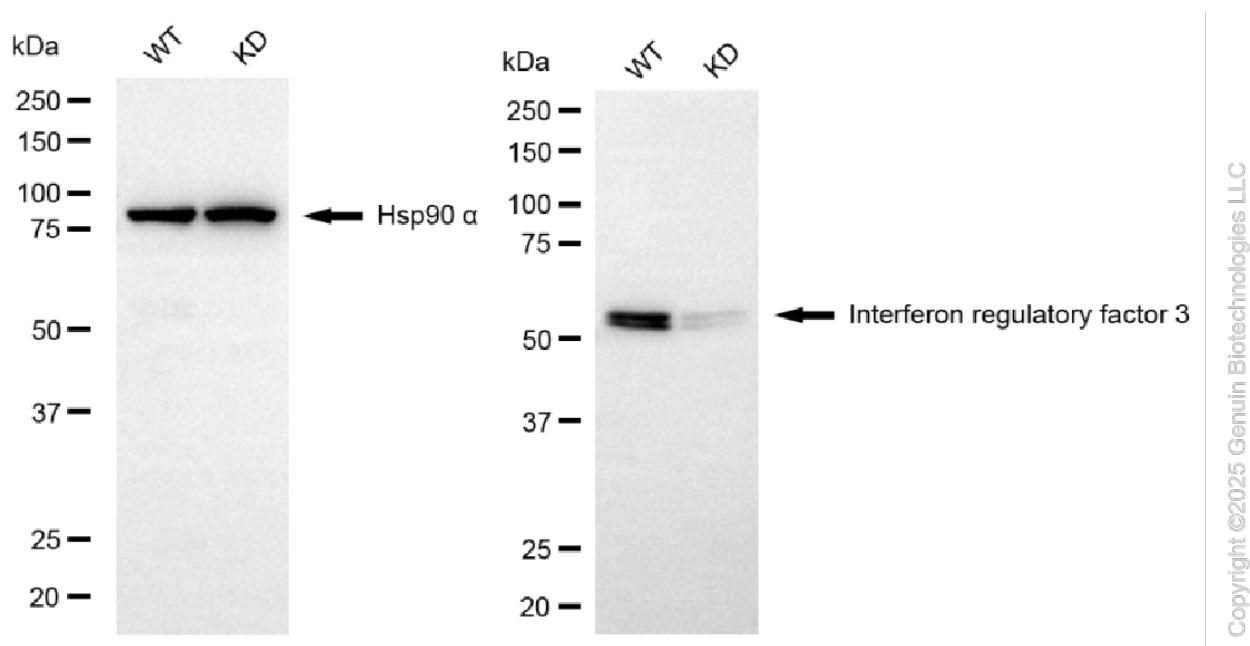
### ORDERS

SALES@GENUINBIOTECH.COM  
FAX: +1-540-855-7041

[WWW.GENUINBIOTECH.COM](http://WWW.GENUINBIOTECH.COM)

## KD-Validated Anti-Interferon Regulatory Factor 3 Recombinant Rabbit Monoclonal

PAGE 4



Western blotting analysis using anti-interferon regulatory factor 3 antibody (Cat#61219). Interferon regulatory factor 3 expression in wild type (WT) and interferon regulatory factor 3 (IRF3) knockdown (KD) HSHC cells with 20 µg of total cell lysates. Hsp90 α serves as a loading control. The blot was incubated with anti-interferon regulatory factor 3 antibody (Cat#61219, 1:5,000) and HRP-conjugated goat anti-rabbit secondary antibody (Cat#201, 1:20,000) respectively. Image was developed using NaQ™ ECL Substrate Kit (Cat#716).

### SUPPORT

SUPPORT@GENUINBIOTECH.COM  
TEL: +1-540-855-7041

### ORDERS

SALES@GENUINBIOTECH.COM  
FAX: +1-540-855-7041

[WWW.GENUINBIOTECH.COM](http://WWW.GENUINBIOTECH.COM)