

KD-Validated Anti-DDB1 Recombinant Rabbit Monoclonal Antibody



Catalog #: 61221

Aliases

DDB1; Damage Specific DNA Binding Protein 1; Xeroderma Pigmentosum Group E-Complementing Protein ; UV-Damaged DNA-Binding Protein 1; UV-Damaged DNA-Binding Factor; DNA Damage-Binding Protein 1; DNA Damage-Binding Protein A; HBV X-Associated Protein 1; XPE-Binding Factor; DDB P127 Subunit; UV-DDB 1; XPE-BF; XAP-1; XAP1; Damage-Specific DNA Binding Protein 1 (127kDa); Damage-Specific DNA Binding Protein 1, 127kDa; Damage-Specific DNA-Binding Protein 1; UV-DDB1; WHIKERS; DDBA; XPCE; DDBa; XPCE; XPE

Background

Gene Name: DDB1

NCBI Gene Entry: [1642](#)

UniProt Entry: [Q16531](#)

Application Information

Molecular Weight: Predicted, 127 kDa, observed, 127 kDa

Clonality: Rabbit monoclonal antibody

Clone ID: 23GB2265

Species Reactivity: Human, mouse, rat

Applications Tested: Western blotting (WB), flow cytometry (FCM), immunocytochemistry (IC)

Immunogen

A synthesized peptide derived from human DDB1

Isotype

Rabbit IgG

Storage Buffer

Supplied in PBS (pH 7.4) containing 50% glycerol, and 0.02% sodium azide.

Storage

Store at -20 °C for one year.

Recommended Dilutions

Western Blotting (WB): 1:10,000-1:50,000

Flow Cytometry (FCM): 1:2,000

SUPPORT

SUPPORT@GENUINBIOTECH.COM
TEL: +1-540-855-7041

ORDERS

SALES@GENUINBIOTECH.COM
FAX: +1-540-855-7041

WWW.GENUINBIOTECH.COM

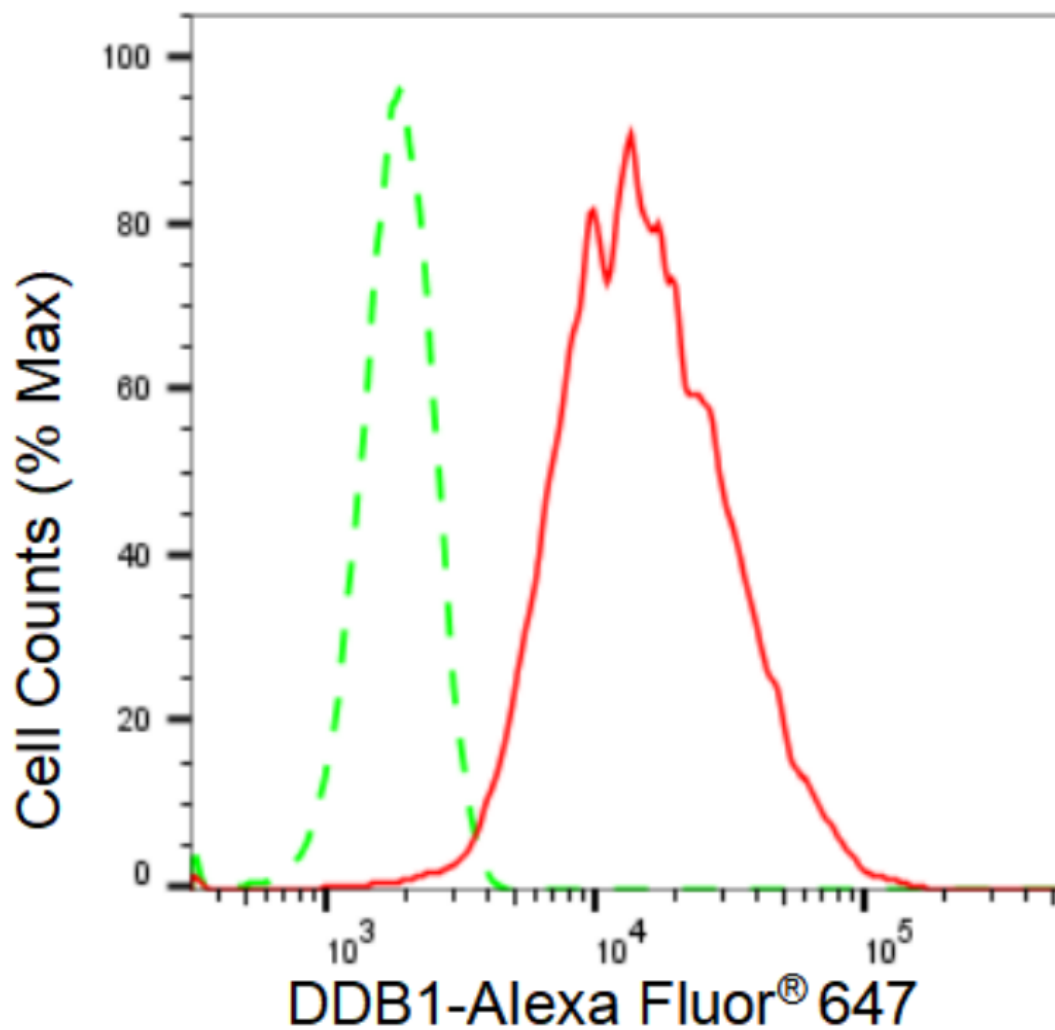
KD-Validated Anti-DDB1 Recombinant Rabbit Monoclonal Antibody

PAGE 2

Immunocytochemistry (IC): 1:100-1:1,000

Note: This product is for research use only.

Validation Data



Copyright ©2024 Genuin Biotechnologies LLC

Flow cytometric analysis of DDB1 expression in HepG2 cells using DDB1 antibody (Cat#61221, 1:2,000). Green, isotype control; red, DDB1.

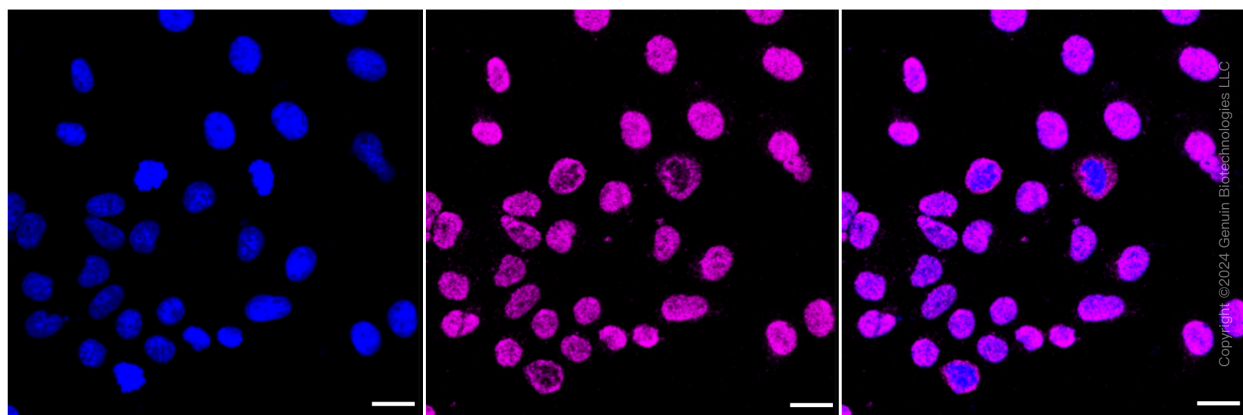
SUPPORT

SUPPORT@GENUINBIOTECH.COM
TEL: +1-540-855-7041

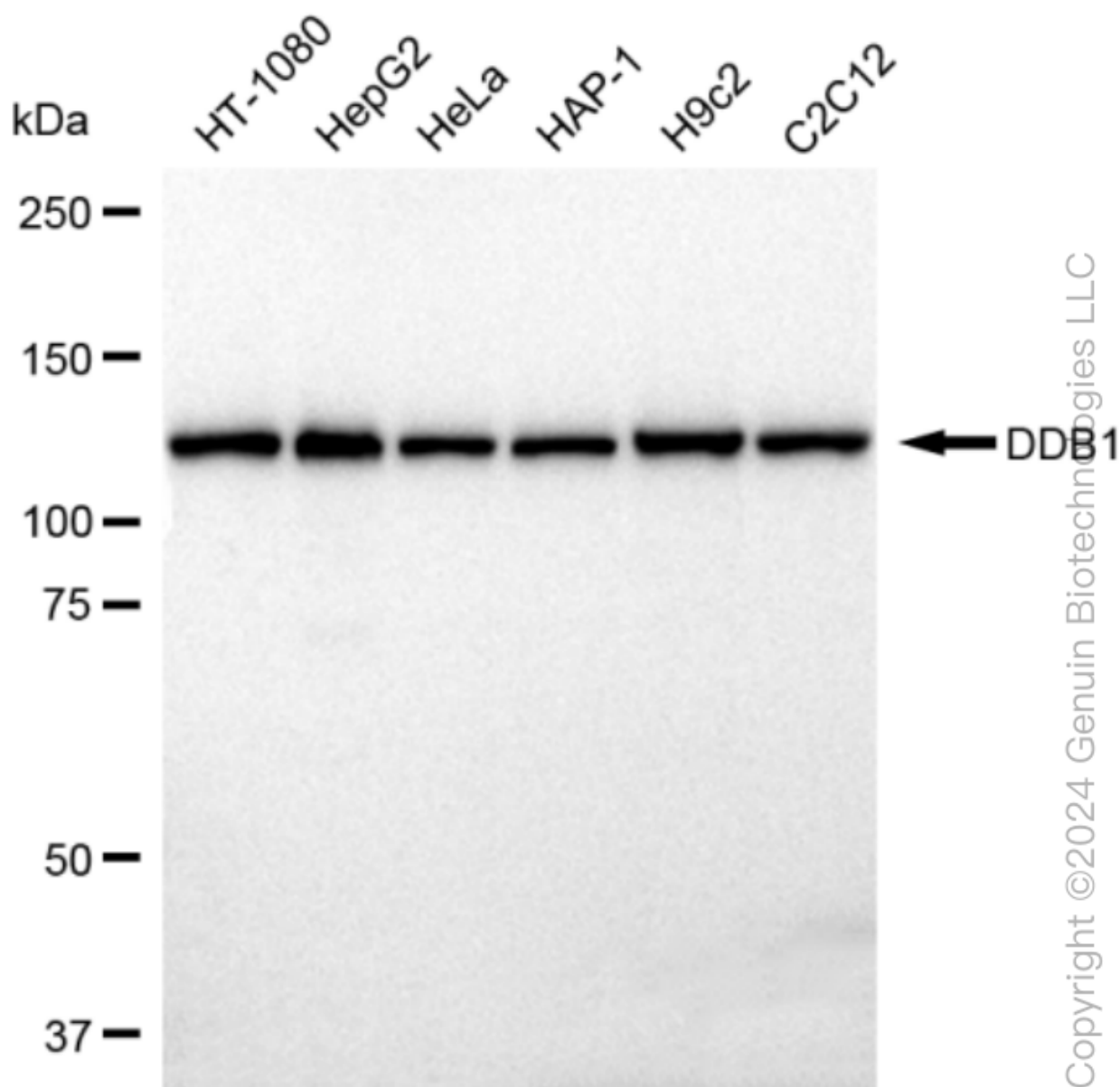
ORDERS

SALES@GENUINBIOTECH.COM
FAX: +1-540-855-7041

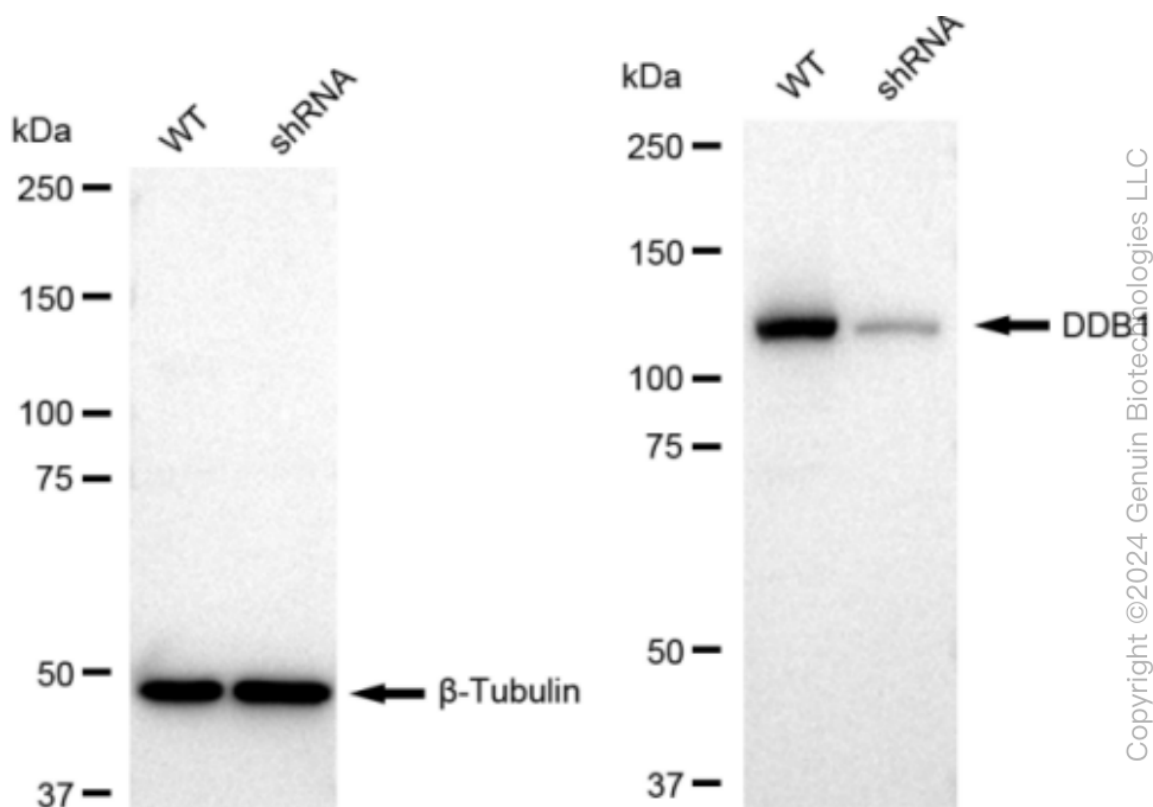
WWW.GENUINBIOTECH.COM



Immunocytochemical staining of HepG2 cells with DDB1 antibody (Cat#61221, 1:1,000). Nuclei were stained blue with DAPI; DDB1 was stained magenta with Alexa Fluor® 647. Images were taken using Leica stellaris 5. Protein abundance based on laser Intensity and smart gain: Medium. Scale bar: 20 μ m.



Western blotting analysis using anti-DDB1 antibody (Cat#61221). Total cell lysates (30 μ g) from various cell lines were loaded and separated by SDS-PAGE. The blot was incubated with anti-DDB1 antibody (Cat#61221, 1:50,000) and HRP-conjugated goat anti-rabbit secondary antibody (Cat#201, 1:20,000) respectively. Image was developed using FeQ™ ECL Substrate Kit (Cat#226). DDB1, damage specific DNA binding protein 1.



Western blotting analysis using anti-DDB1 antibody (Cat#61221). DDB1 expression in wild type (WT) and DDB1 shRNA knockdown (KD) HeLa cells with 30 μ g of total cell lysates. β -Tubulin serves as a loading control. The blot was incubated with anti-DDB1 antibody (Cat#61221, 1:50,000) and HRP-conjugated goat anti-rabbit secondary antibody (Cat#201, 1:20,000) respectively. Image was developed using FeQ™ ECL Substrate Kit (Cat#226).