

# KD-Validated Anti-RAD51 Recombinant Rabbit Monoclonal Antibody



**Catalog #: 61223**

## Aliases

RAD51; RAD51 Recombinase; RAD51A; BRCC5; FANCR; RECA; BRCA1/BRCA2-Containing Complex, Subunit 5; DNA Repair Protein RAD51 Homolog 1; RAD51 Homolog A; HsT16930; HsRad51; HRAD51; RAD51 Homolog (RecA Homolog, E. Coli) (S. Cerevisiae); RAD51 (S. Cerevisiae) Homolog (E Coli RecA Homolog); RAD51 Homolog (S. Cerevisiae); RecA, E. Coli, Homolog Of; Recombination Protein A; RecA-Like Protein; HST16930; HSRAD51; HsRAD51; MRMV2

## Background

Gene Name: RAD51

NCBI Gene Entry: [5888](#)

UniProt Entry: [Q06609](#)

## Application Information

Molecular Weight: Predicted, 37 kDa, observed, 36 kDa

Clonality: Rabbit monoclonal antibody

Clone ID: 23GB2275

Species Reactivity: Human, mouse, rat

Applications Tested: Western blotting (WB), flow cytometry (FCM), immunocytochemistry (IC)

## Immunogen

A synthesized peptide derived from human Rad51

## Isotype

Rabbit IgG

## Storage Buffer

Supplied in PBS (pH 7.4) containing 50% glycerol, and 0.02% sodium azide.

## Storage

Store at -20 °C for one year.

## Recommended Dilutions

Western Blotting (WB): 1:1,000-1:5,000

Flow Cytometry (FCM): 1:2,000

Immunocytochemistry (IC): 1:100-1:1,000

---

### SUPPORT

SUPPORT@GENUINBIOTECH.COM  
TEL: +1-540-855-7041

### ORDERS

SALES@GENUINBIOTECH.COM  
FAX: +1-540-855-7041

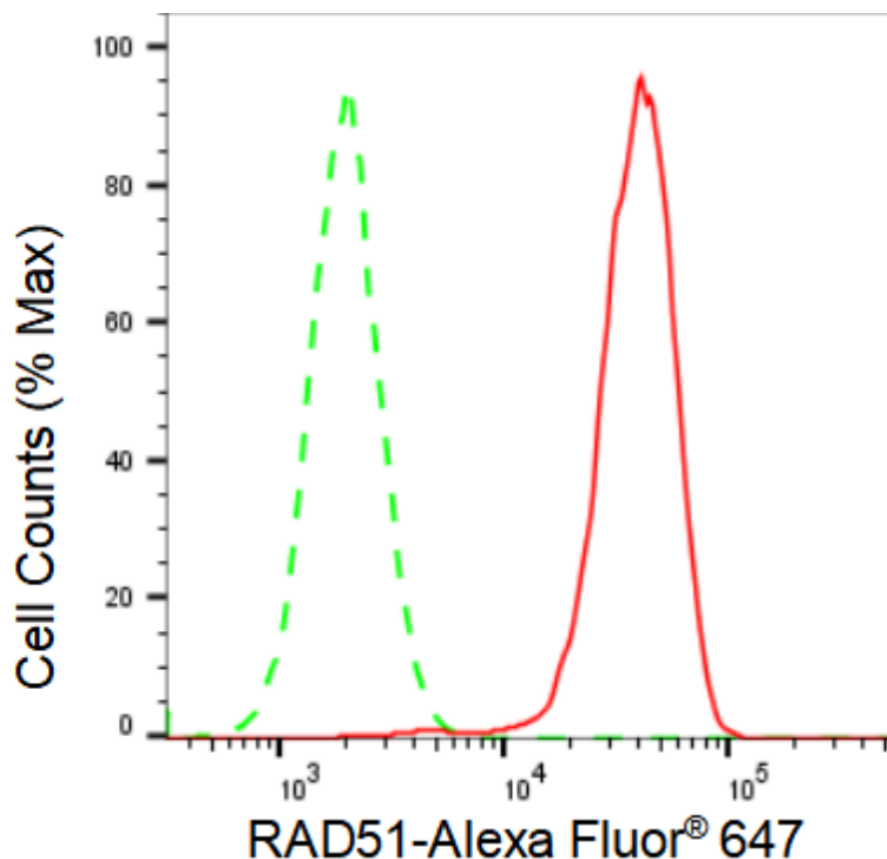
[WWW.GENUINBIOTECH.COM](http://WWW.GENUINBIOTECH.COM)

# KD-Validated Anti-RAD51 Recombinant Rabbit Monoclonal Antibody

PAGE 2

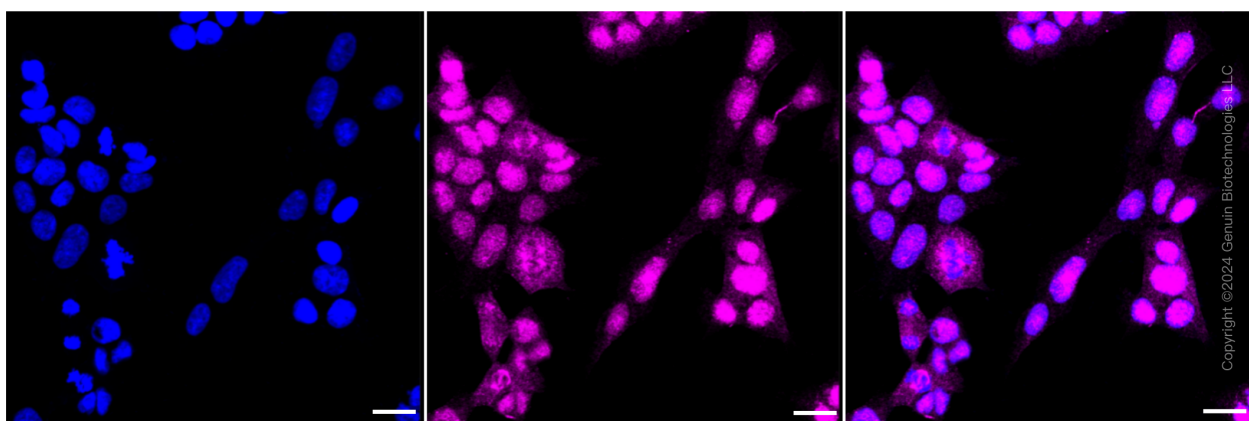
**Note:** This product is for research use only.

## Validation Data



Copyright ©2024 Genuin Biotechnologies LLC

Flow cytometric analysis of RAD51 expression in HAP-1 cells using RAD51 antibody (Cat#61223, 1:2,000). Green, isotype control; red, RAD51.



### SUPPORT

SUPPORT@GENUINBIOTECH.COM  
TEL: +1-540-855-7041

### ORDERS

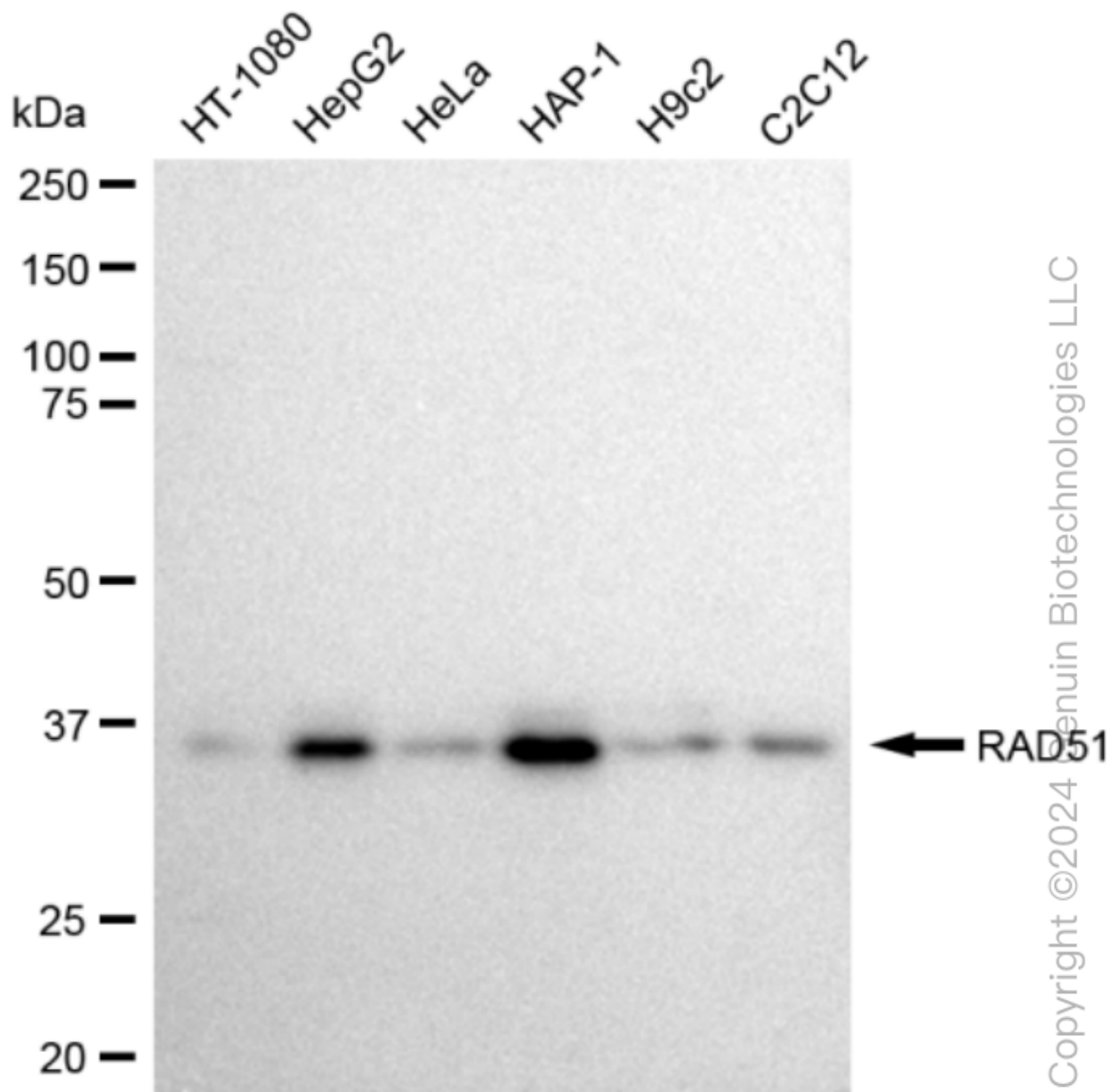
SALES@GENUINBIOTECH.COM  
FAX: +1-540-855-7041

[WWW.GENUINBIOTECH.COM](http://WWW.GENUINBIOTECH.COM)

## KD-Validated Anti-RAD51 Recombinant Rabbit Monoclonal Antibody

PAGE 3

Scale bar: 20  $\mu$ m.



Western blotting analysis using anti-RAD51 antibody (Cat#61223). Total cell lysates (30  $\mu$ g) from various cell lines were loaded and separated by SDS-PAGE. The blot was incubated with anti-RAD51 antibody (Cat#61223, 1:5,000) and HRP-conjugated goat anti-rabbit secondary antibody (Cat#201, 1:20,000) respectively. Image was developed using FeQ<sup>TM</sup> ECL Substrate Kit (Cat#226).

### SUPPORT

SUPPORT@GENUINBIOTECH.COM  
TEL: +1-540-855-7041

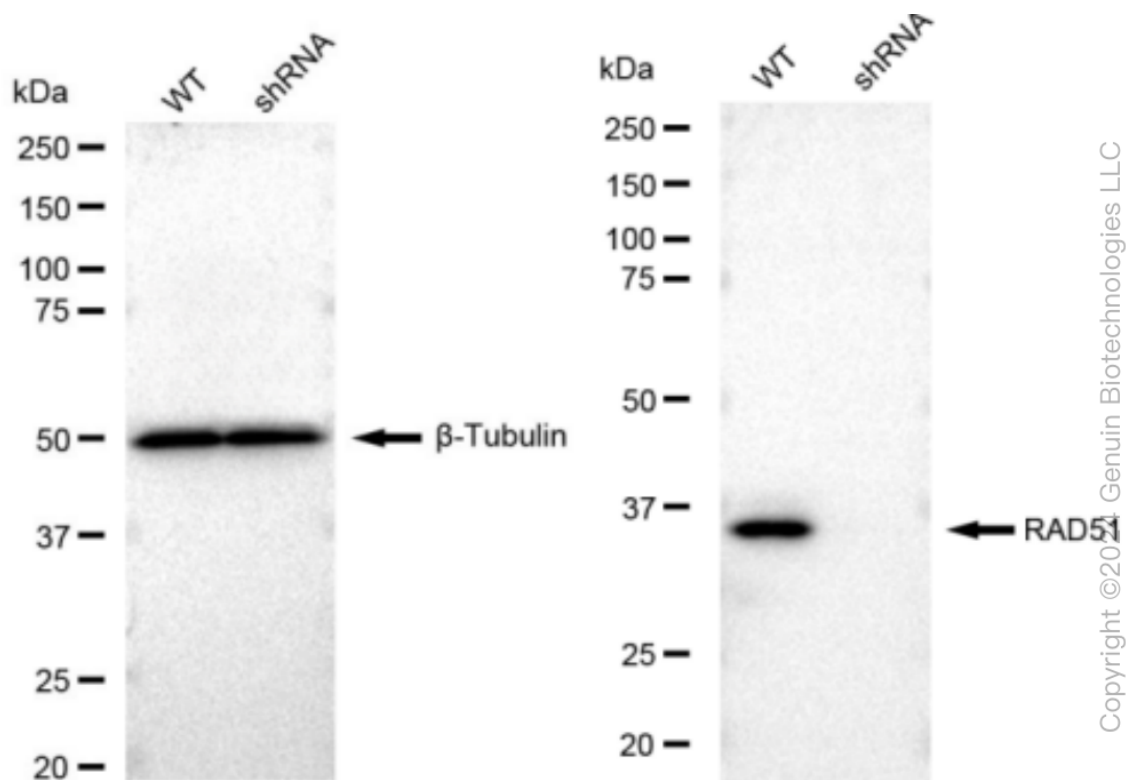
### ORDERS

SALES@GENUINBIOTECH.COM  
FAX: +1-540-855-7041

[WWW.GENUINBIOTECH.COM](http://WWW.GENUINBIOTECH.COM)

## KD-Validated Anti-RAD51 Recombinant Rabbit Monoclonal Antibody

PAGE 4



Western blotting analysis using anti-RAD51 antibody (Cat#61223). RAD51 expression in wild type (WT) and RAD51 shRNA knockdown (KD) HeLa cells with 30  $\mu$ g of total cell lysates.  $\beta$ -Tubulin serves as a loading control. The blot was incubated with anti-RAD51 antibody (Cat#61223, 1:5,000) and HRP-conjugated goat anti-rabbit secondary antibody (Cat#201, 1:20,000) respectively. Image was developed using FeQ™ ECL Substrate Kit (Cat#226).

### SUPPORT

SUPPORT@GENUINBIOTECH.COM  
TEL: +1-540-855-7041

### ORDERS

SALES@GENUINBIOTECH.COM  
FAX: +1-540-855-7041

[WWW.GENUINBIOTECH.COM](http://WWW.GENUINBIOTECH.COM)