

KD-Validated Anti-KLF Transcription Factor 4 Mouse Monoclonal Antibody



Catalog #: 61226

Aliases

KLF4; KLF Transcription Factor 4; GKLF; EZF; Epithelial Zinc Finger Protein EZF; Gut-Enriched Krueppel-Like Factor; Kruppel-Like Factor 4 (Gut); Gut Kruppel-Like Factor; Krueppel-Like Factor 4; Kruppel Like Factor 4; Endothelial Kruppel-Like Zinc Finger Protein

Background

Gene Name: KLF4

NCBI Gene Entry: [9314](#)

UniProt Entry: [O43474](#)

Application Information

Molecular Weight: Predicted, 55 kDa, observed, 70 kDa

Clonality: Mouse monoclonal antibody

Clone ID: 25GB575

Species Reactivity: Human, mouse, rat

Applications Tested: Western blotting (WB)

Immunogen

Recombinant protein of human KLF4

Isotype

Mouse IgG2b

Storage Buffer

Supplied in PBS (pH 7.4) containing 50% glycerol, and 0.02% sodium azide.

Storage

Store at -20 °C for one year.

Recommended Dilutions

Western Blotting (WB): 1:2,500-1:5,000

Note: This product is for research use only.

Validation Data

SUPPORT

SUPPORT@GENUINBIOTECH.COM
TEL: +1-540-855-7041

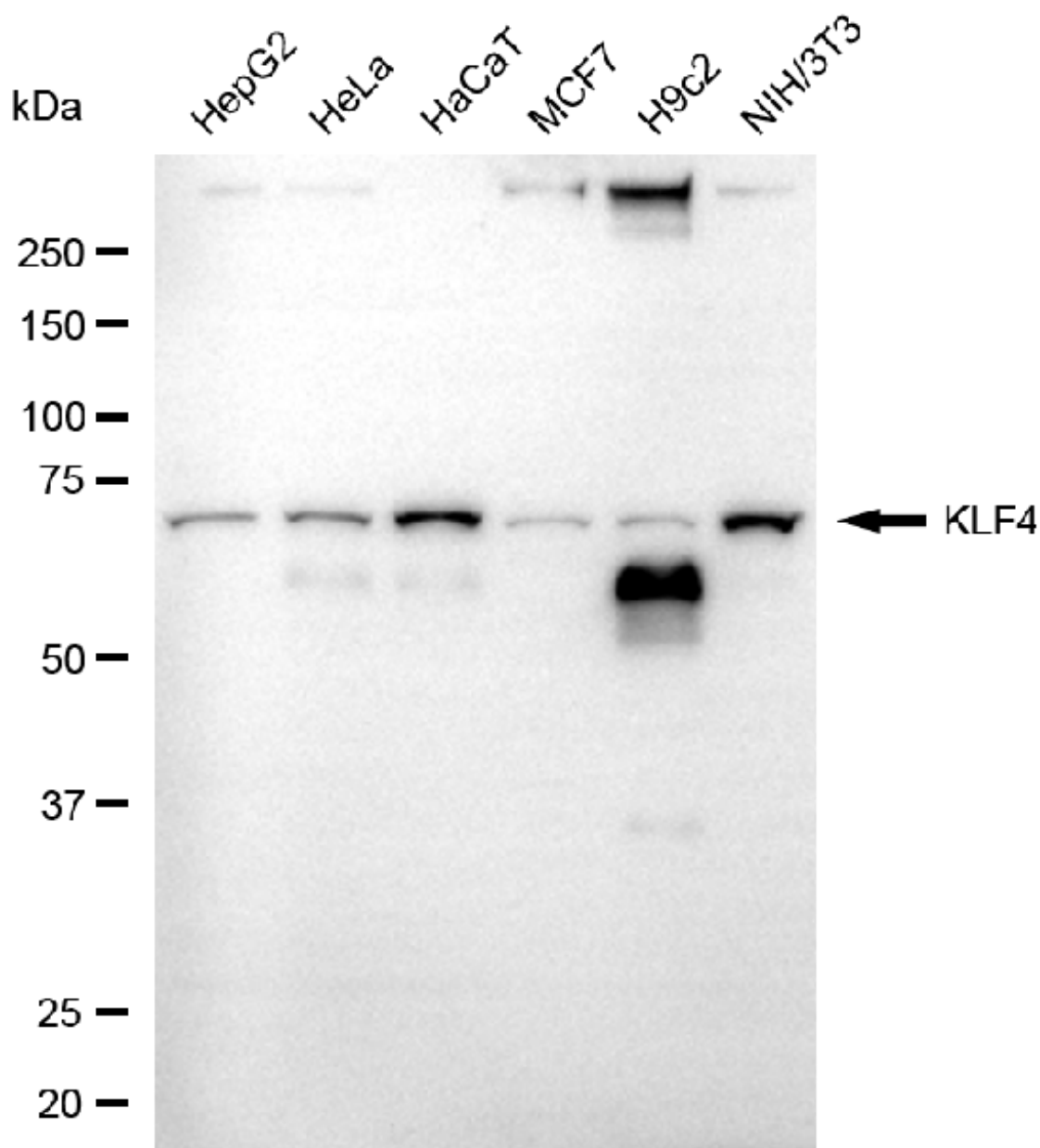
ORDERS

SALES@GENUINBIOTECH.COM
FAX: +1-540-855-7041

WWW.GENUINBIOTECH.COM

KD-Validated Anti-KLF Transcription Factor 4 Mouse Monoclonal Antibody

PAGE 2



Copyright ©2025 Genuin Biotechnologies LLC

Western blotting analysis using anti-KLF4 antibody (Cat#61226). Total cell lysates (30 µg) from various cell lines were loaded and separated by SDS-PAGE. The blot was incubated with anti-KLF4 antibody (Cat#61226, 1:5,000) and HRP-conjugated goat anti-mouse secondary antibody (Cat#101, 1:20,000) respectively. Image was developed using FeQ™ ECL Substrate Kit (Cat#226).

SUPPORT

SUPPORT@GENUINBIOTECH.COM
TEL: +1-540-855-7041

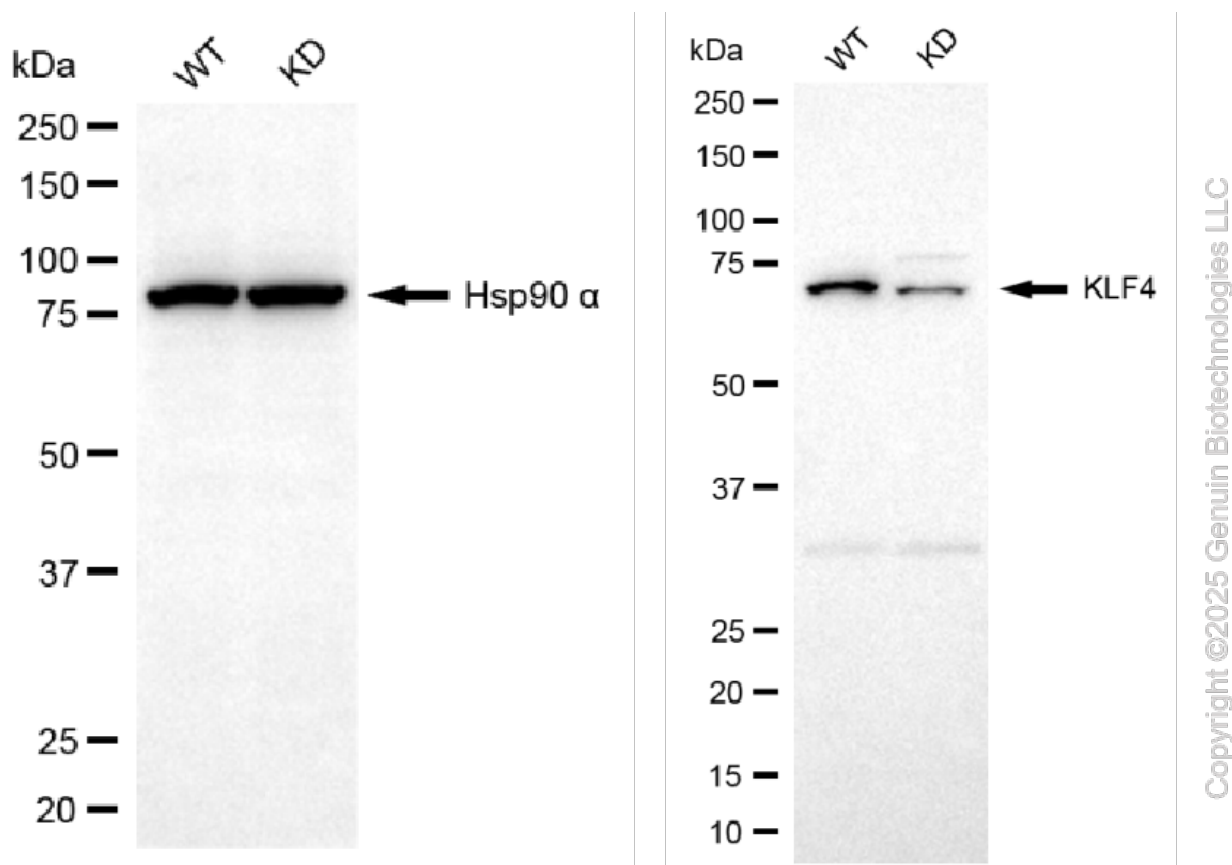
ORDERS

SALES@GENUINBIOTECH.COM
FAX: +1-540-855-7041

WWW.GENUINBIOTECH.COM

KD-Validated Anti-KLF Transcription Factor 4 Mouse Monoclonal Antibody

PAGE 3



Western blotting analysis using anti-KLF4 antibody (Cat#61226). KLF4 expression in wild type (WT) and KLF4 knockdown (KD) HeLa cells with 20 µg of total cell lysates. Hsp90 α serves as a loading control. The blot was incubated with anti-KLF4 antibody (Cat#61226, 1:5,000) and HRP-conjugated goat anti-mouse secondary antibody (Cat#101, 1:20,000) respectively. Image was developed using FeQ™ ECL Substrate Kit (Cat#226).

SUPPORT

SUPPORT@GENUINBIOTECH.COM
TEL: +1-540-855-7041

ORDERS

SALES@GENUINBIOTECH.COM
FAX: +1-540-855-7041

WWW.GENUINBIOTECH.COM