

KD-Validated Anti-Cyclin dependent kinase 2 Recombinant Rabbit Monoclonal Antibody



Catalog #: 61227

Aliases

CDK2; Cyclin Dependent Kinase 2; Cell Division Protein Kinase; Cyclin-Dependent Kinase; P33 Protein Kinase; EC 2.7.11.22; CDKN2; Cdc2-Related Protein Kinase; P33(CDK2); EC 2.7.11

Background

Gene Name: CDK2

NCBI Gene Entry: [1017](#)

UniProt Entry: [P24941](#)

Application Information

Molecular Weight: Predicted, 34 kDa, observed, 34 kDa

Clonality: Rabbit monoclonal antibody

Clone ID: 23GB2295

Species Reactivity: Human, mouse, rat

Applications Tested: Western blotting (WB), flow cytometry (FCM), immunocytochemistry (IC), immunohistochemistry (IHC)

Immunogen

A synthesized peptide derived from human CXCR7

Isotype

Rabbit IgG

Storage Buffer

Supplied in PBS (pH 7.4) containing 50% glycerol, and 0.02% sodium azide.

Storage

Store at -20 °C for one year.

Recommended Dilutions

Western Blotting (WB): 1:1,000-1:5,000

Flow Cytometry (FCM): 1:200-1:2,000

Immunocytochemistry (IC): 1:100-1:1,000

Immunohistochemistry (IHC): 1:100-1:200

SUPPORT

SUPPORT@GENUINBIOTECH.COM
TEL: +1-540-855-7041

ORDERS

SALES@GENUINBIOTECH.COM
FAX: +1-540-855-7041

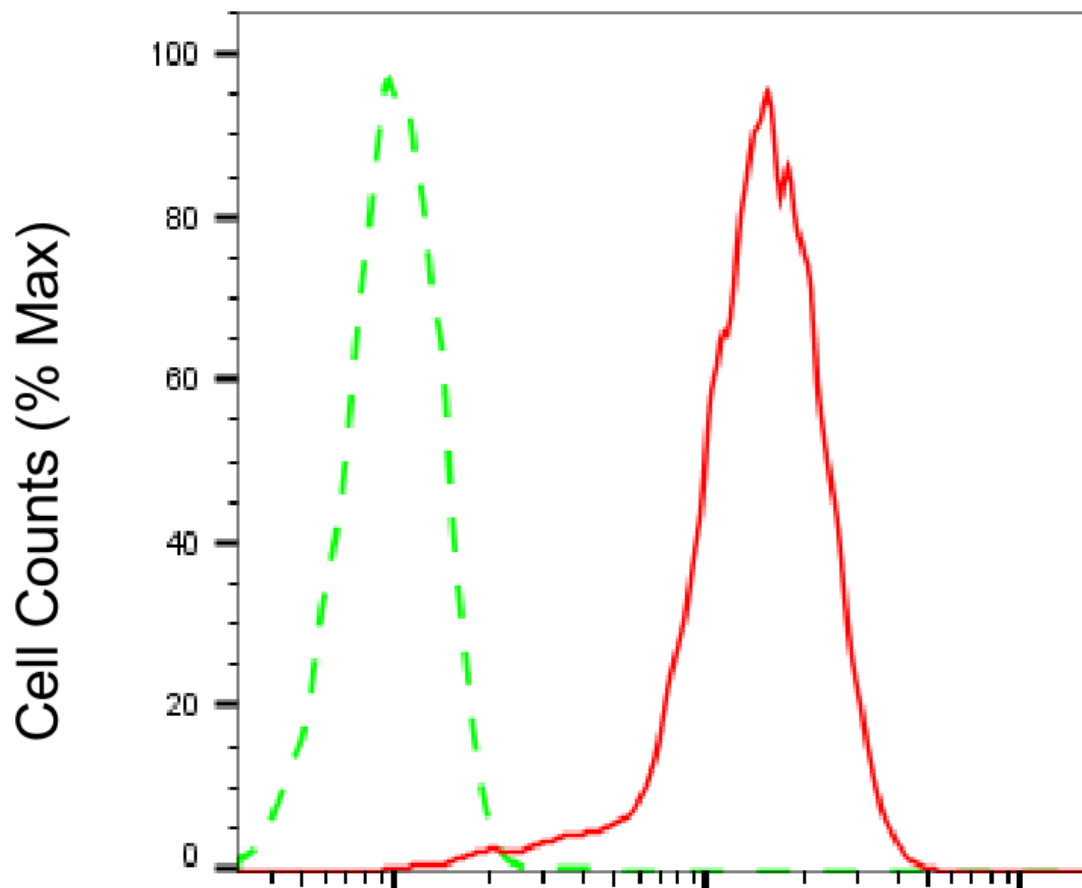
WWW.GENUINBIOTECH.COM

KD-Validated Anti-Cyclin dependent kinase 2 Recombinant Rabbit Monoclonal Antibody

PAGE 2

Note: This product is for research use only.

Validation Data



Copyright ©2025 Genuin Biotechnologies LLC

Cyclin dependent kinase 2-Alexa Fluor® 647

Flow cytometric analysis of Cyclin dependent kinase 2 expression in HepG2 cells using Cyclin dependent kinase 2 antibody (Cat#61227, 1:2,000). Green, isotype control; red, Cyclin dependent kinase 2.

SUPPORT

SUPPORT@GENUINBIOTECH.COM
TEL: +1-540-855-7041

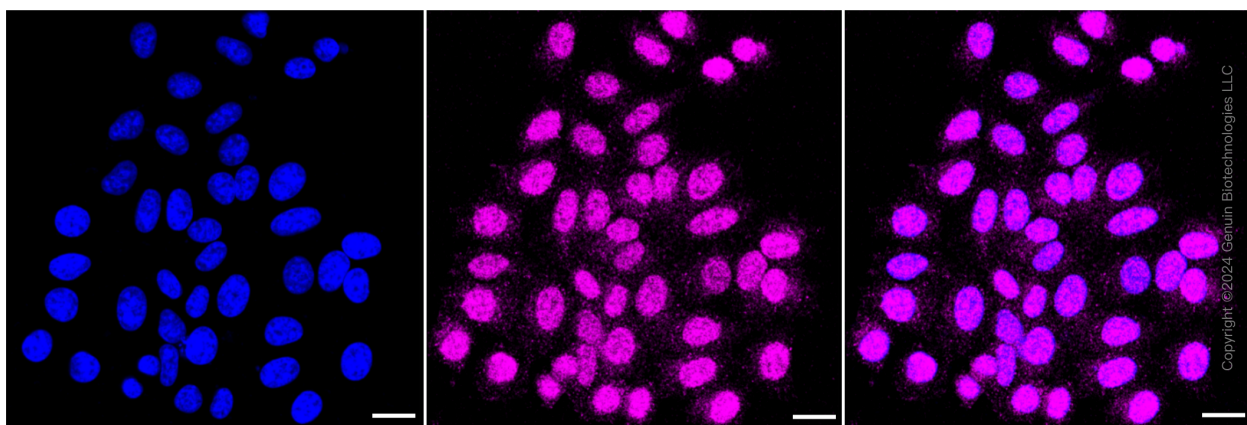
ORDERS

SALES@GENUINBIOTECH.COM
FAX: +1-540-855-7041

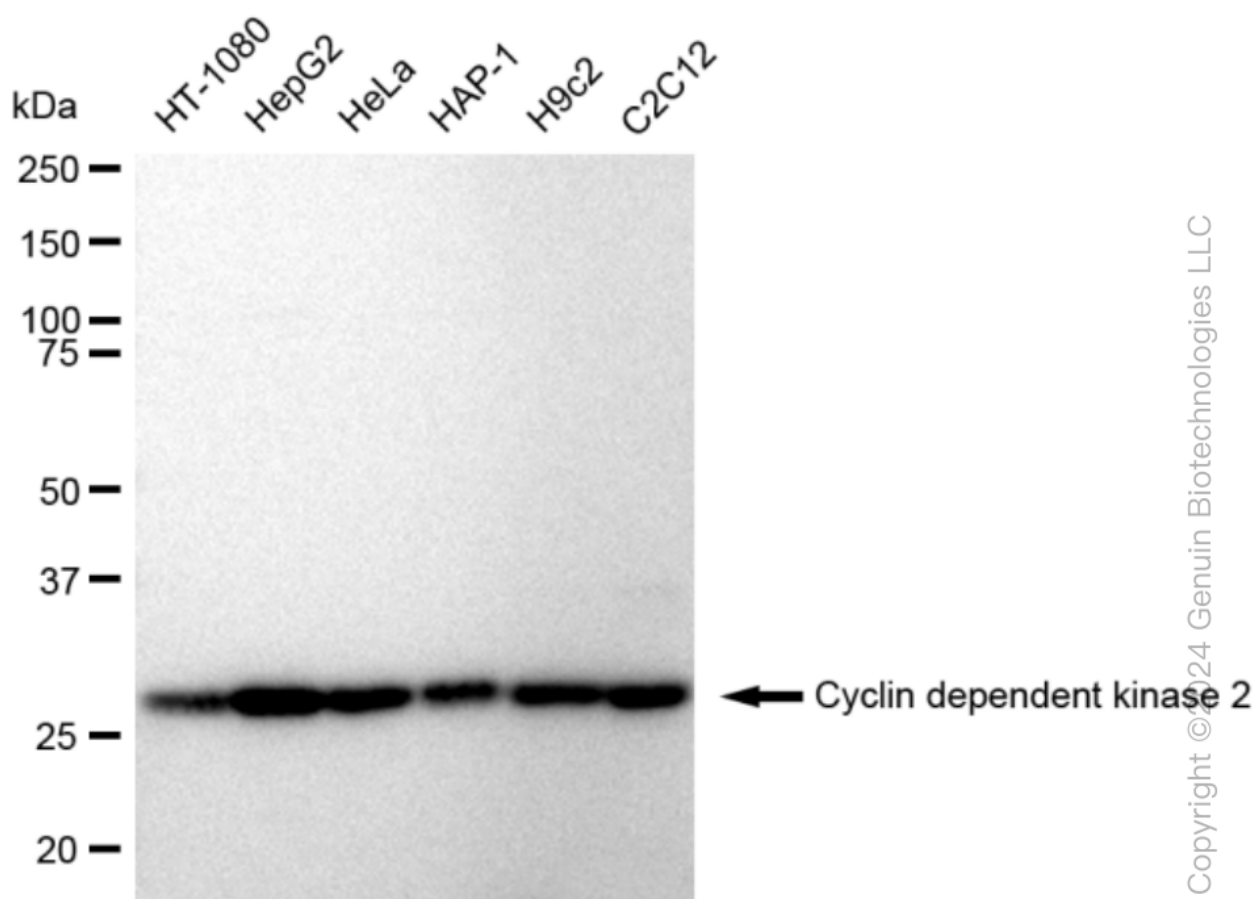
WWW.GENUINBIOTECH.COM

KD-Validated Anti-Cyclin dependent kinase 2 Recombinant Rabbit Monoclonal Antibody

PAGE 3



Immunocytochemical staining of HepG2 cells with Cyclin dependent kinase 2 antibody (Cat#61227, 1:1,000). Nuclei were stained blue with DAPI; Cyclin dependent kinase 2 was stained magenta with Alexa Fluor® 647. Images were taken using Leica stellaris 5. Protein abundance based on laser Intensity and smart gain: Medium. Scale bar: 20 μ m.



Western blotting analysis using anti-Cyclin dependent kinase 2 antibody (Cat#61227). Total cell lysates (30 μ g) from various cell lines were loaded and separated by SDS-PAGE. The blot was incubated with anti-Cyclin dependent kinase 2 antibody (Cat#61227, 1:5,000) and HRP-conjugated goat anti-rabbit secondary antibody (Cat#201, 1:20,000) respectively. Image was

SUPPORT

SUPPORT@GENUINBIOTECH.COM
TEL: +1-540-855-7041

ORDERS

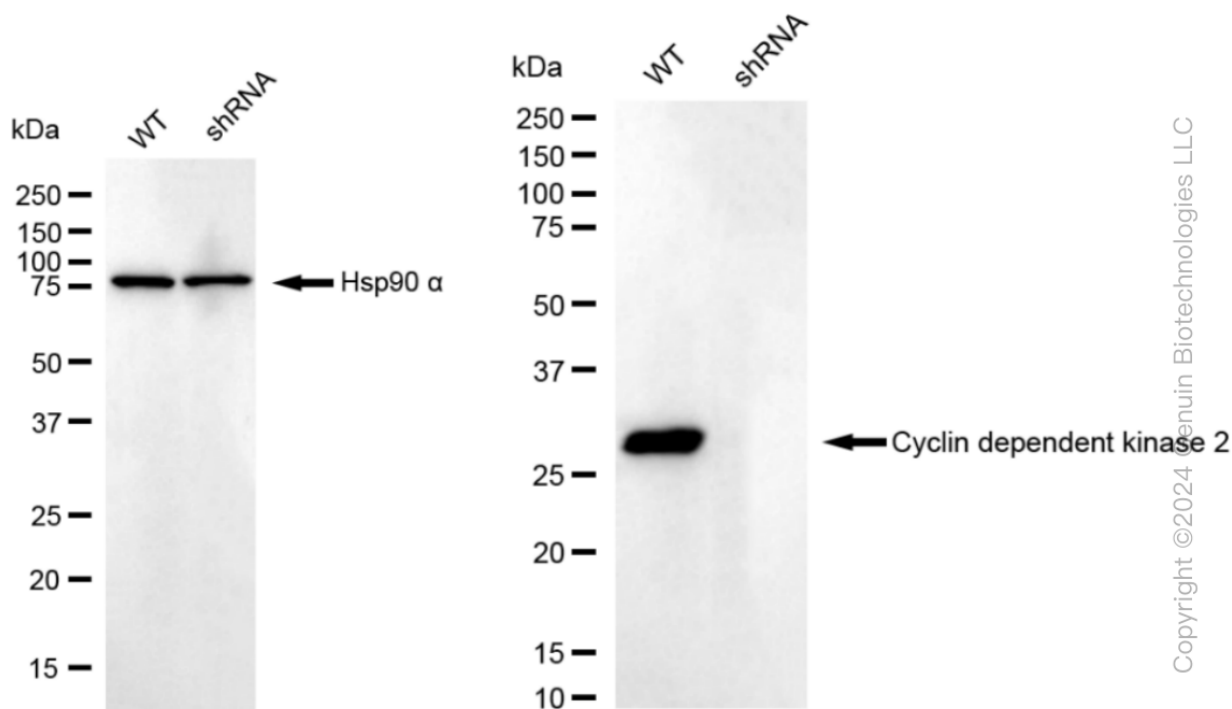
SALES@GENUINBIOTECH.COM
FAX: +1-540-855-7041

WWW.GENUINBIOTECH.COM

KD-Validated Anti-Cyclin dependent kinase 2 Recombinant Rabbit Monoclonal Antibody

PAGE 4

developed using FeQ™ ECL Substrate Kit (Cat#226).



Western blotting analysis using anti-Cyclin dependent kinase 2 antibody (Cat#61227). Cyclin dependent kinase 2 expression in wild type (WT) and cyclin dependent kinase 2 shRNA knockdown (KD) HeLa cells with 30 μ g of total cell lysates. β -Tubulin serves as a loading control. The blot was incubated with anti-Cyclin dependent kinase 2 antibody (Cat#61227, 1:5,000) and HRP-conjugated goat anti-rabbit secondary antibody (Cat#201, 1:20,000) respectively. Image was developed using FeQ™ ECL Substrate Kit (Cat#226).

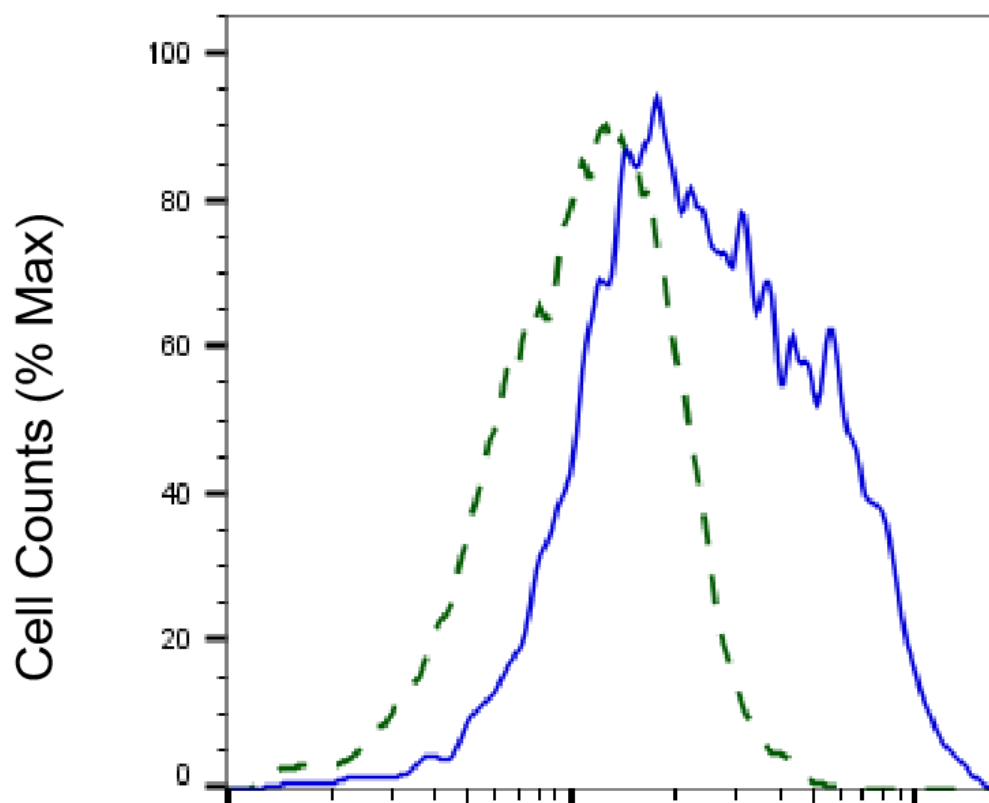
SUPPORT

SUPPORT@GENUINBIOTECH.COM
TEL: +1-540-855-7041

ORDERS

SALES@GENUINBIOTECH.COM
FAX: +1-540-855-7041

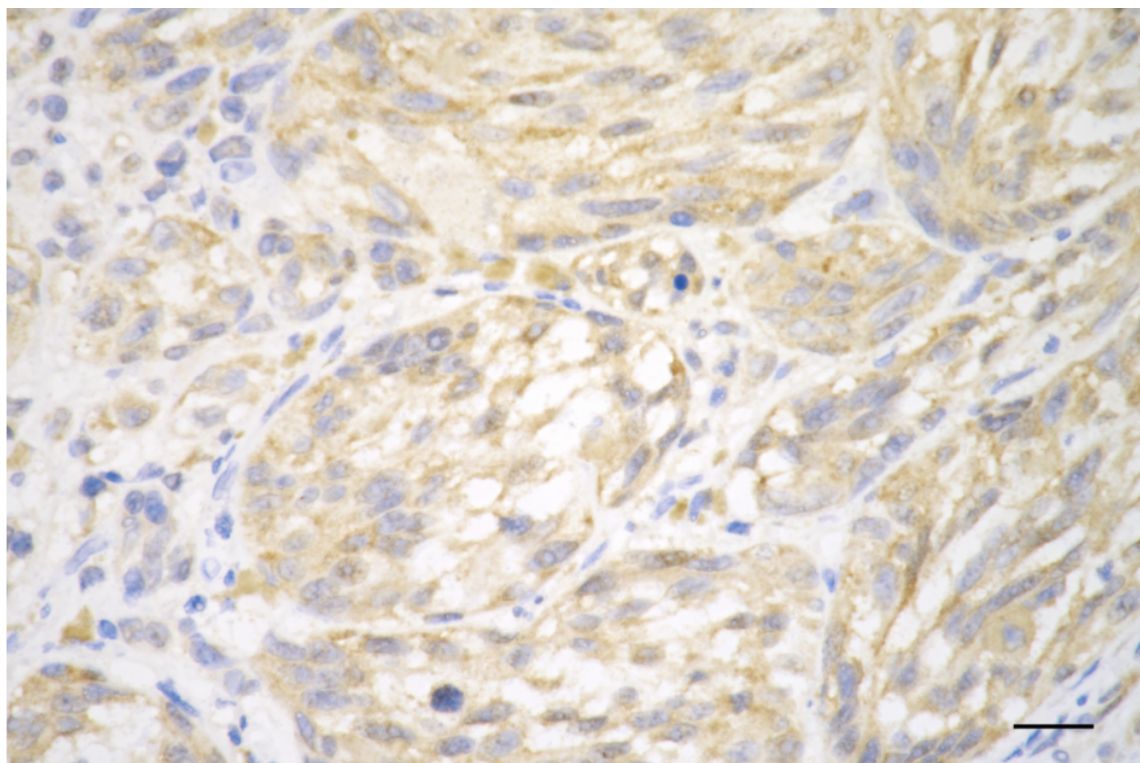
WWW.GENUINBIOTECH.COM



Copyright ©2025 Genuin Biotechnologies LLC

V-Alexa Fluor® 647

Validation of Cyclin dependent kinase 2 knockdown using flow cytometry. Wild-type(WT, Blue) and knockdown(KD, Green) HeLa cells were stained with anti-Cyclin dependent kinase 2 antibody (Cat#61227, 1:2,000) and analyzed using BD flow cytometer.



Copyright ©2025 Genuin Biotechnologies LLC

Immunohistochemistry was performed on paraffin-embedded human melanoma using anti-cyclin dependent kinase 2 antibody (Cat#61227, 1:200). Antigen retrieval was done in sodium citrate buffer (pH 6.0). DAB was used for detection, with hematoxylin counterstaining. Images were acquired using a Nikon Ci-L Plus microscope (40× objective). Scale bar: 25 μ m.