

KD-Validated Anti-SRY-Box Transcription Factor 10 Recombinant Rabbit Monoclonal



Catalog #: 61228

Aliases

SOX10; SRY-Box Transcription Factor 10; SOX-10; WS2E; DOM; WS4; Dominant Megacolon, Mouse, Human Homolog Of; SRY (Sex Determining Region Y)-Box 10; Transcription Factor SOX-10; SRY-Box 10; SRY-Related HMG-Box Gene 10; PCWH; WS4C

Background

Gene Name: SOX10

NCBI Gene Entry: [6663](#)

UniProt Entry: [P56693](#)

Application Information

Molecular Weight: Predicted, 50 kDa, observed, 50 kDa

Clonality: Rabbit monoclonal antibody

Clone ID: 25GB580

Species Reactivity: Human, mouse

Applications Tested: Western blotting (WB), flow cytometry (FCM)

Immunogen

A synthesized peptide derived from human SOX10

Isotype

Rabbit IgG

Storage Buffer

Supplied in PBS (pH 7.4) containing 50% glycerol, and 0.02% sodium azide.

Storage

Store at -20 °C for one year.

Recommended Dilutions

Western Blotting (WB): 1:1,000-1:5,000

Flow Cytometry (FCM): 1:2,000

Note: This product is for research use only.

Validation Data

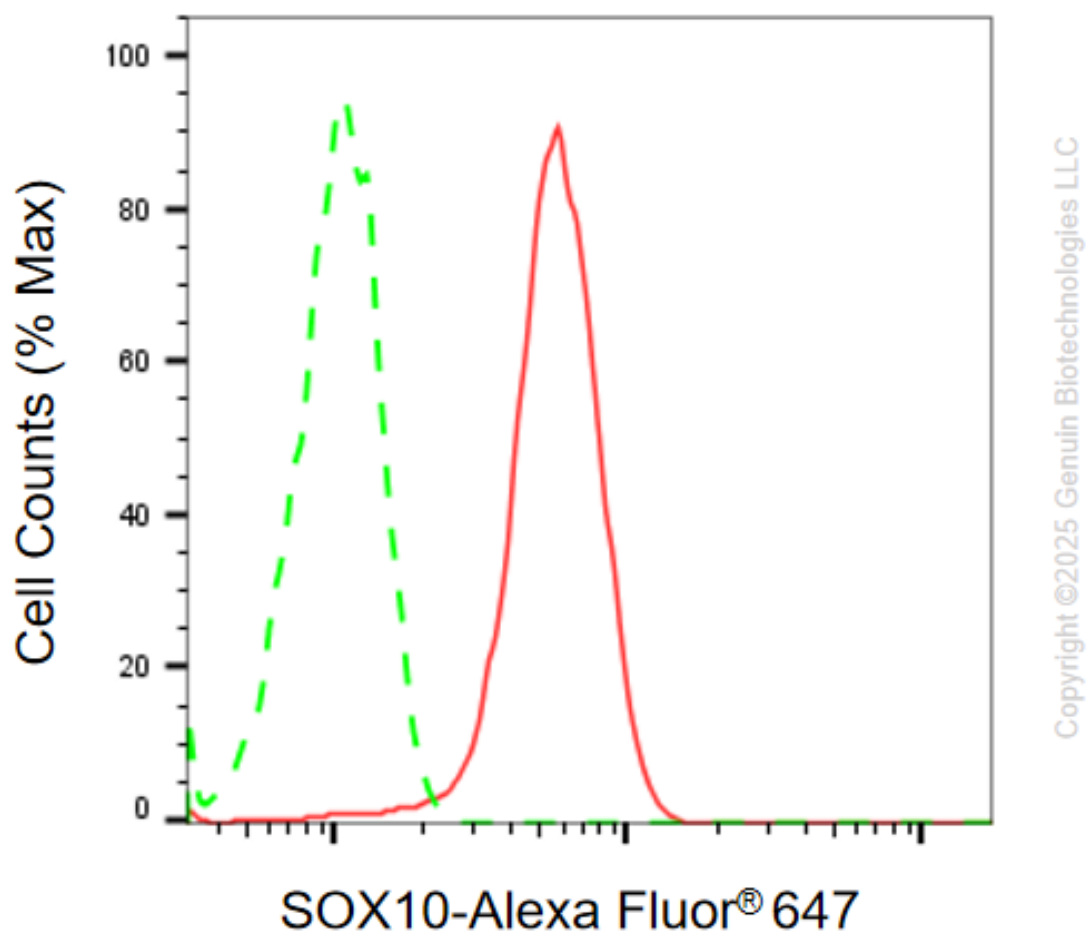
SUPPORT

SUPPORT@GENUINBIOTECH.COM
TEL: +1-540-855-7041

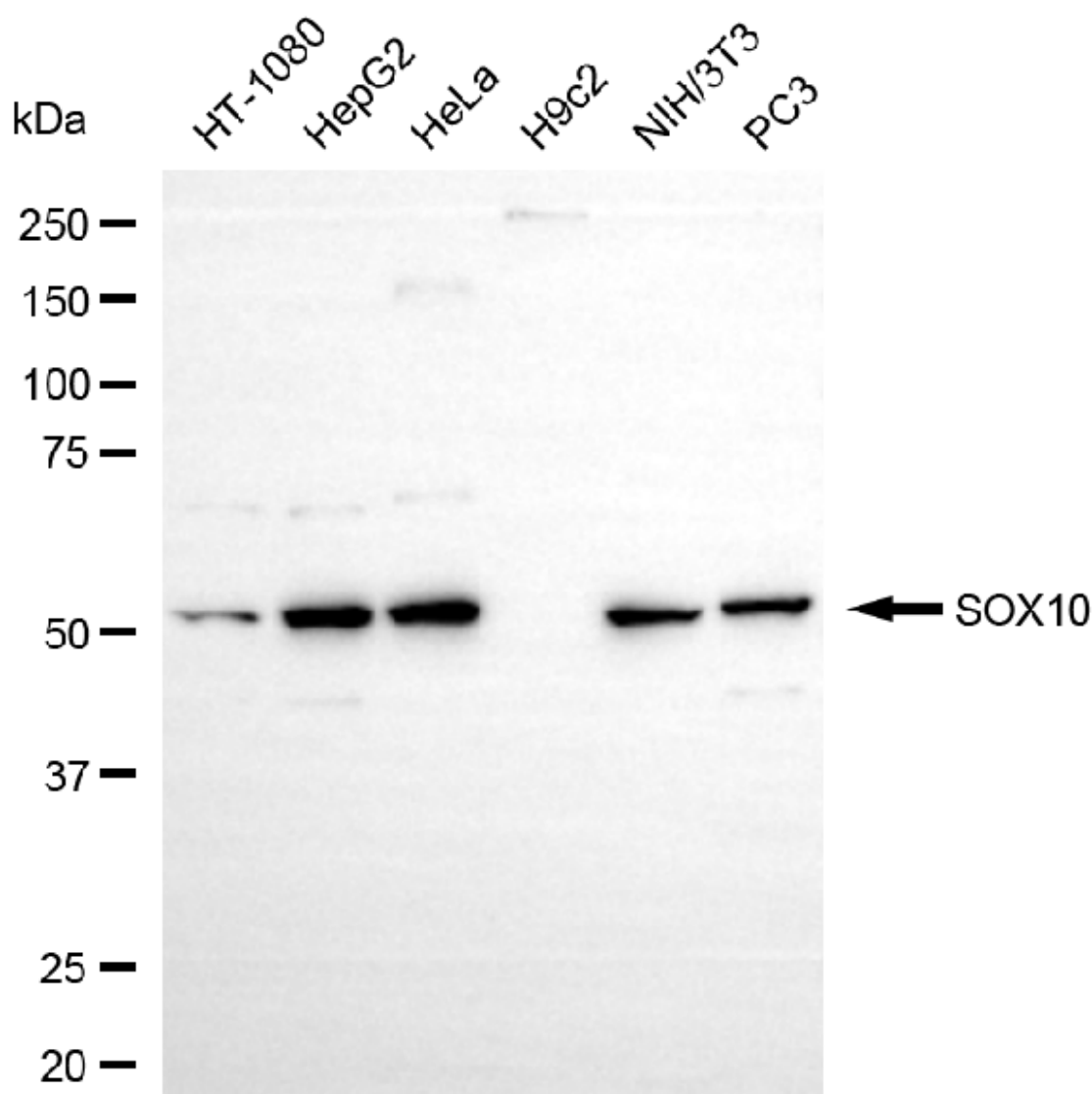
ORDERS

SALES@GENUINBIOTECH.COM
FAX: +1-540-855-7041

WWW.GENUINBIOTECH.COM

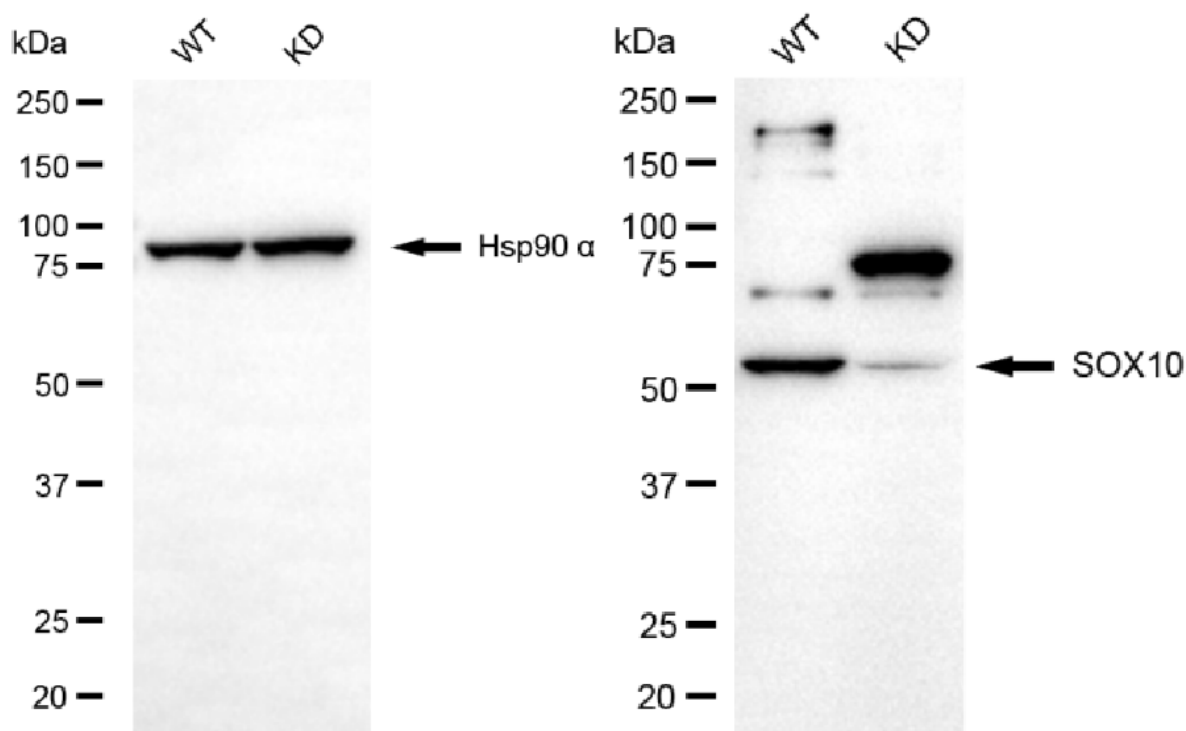


Flow cytometric analysis of SOX10 expression in HepG2 cells using anti-SOX10 antibody (Cat# 61228, 1:2,000). Green, isotype control; red, SOX10.



Copyright ©2025 Genuin Biotechnologies LLC

Western blotting analysis using anti-SOX10 antibody (Cat#61228). Total cell lysates (30 µg) from various cell lines were loaded and separated by SDS-PAGE. The blot was incubated with anti-SOX10 antibody (Cat#61228, 1:5,000) and HRP-conjugated goat anti-rabbit secondary antibody (Cat#201, 1:20,000) respectively. Image was developed using NaQ™ ECL Substrate Kit (Cat#716).



Copyright ©2025 Genuin Biotechnologies LLC

Western blotting analysis using anti-SOX10 antibody (Cat#61228). SOX10 expression in wild type (WT) and SOX10 knockdown (KD) HSHC cells with 20 µg of total cell lysates. Hsp90 α serves as a loading control. The blot was incubated with anti-SOX10 antibody (Cat#61228, 1:5,000) and HRP-conjugated goat anti-rabbit secondary antibody (Cat#201, 1:20,000) respectively. Image was developed using FeQ™ ECL Substrate Kit (Cat#226).