

# KD-Validated Anti-Membrane Metalloendopeptidase Recombinant Rabbit



## Catalog #: 61234

### Aliases

Membrane Metalloendopeptidase; CALLA; NEP; Neprilysin; CD10; Common Acute Lymphocytic Leukemia Antigen; Neutral Endopeptidase 24.11; Skin Fibroblast Elastase; Neutral Endopeptidase; Atriopeptidase; Enkephalinase; EC 3.4.24.11; SFE; Membrane Metallo-Endopeptidase (Neutral Endopeptidase, Enkephalinase, CALLA, CD10); Neprilysin-390; Neprilysin-411; CD10 Antigen; EC 3.4.24; CMT2T; SCA43; EPN

### Background

Gene Name: MME

NCBI Gene Entry: [4311](#)

UniProt Entry: [P08473](#)

### Application Information

Molecular Weight: Predicted, 86 kDa; observed, 100 kDa

Clonality: Rabbit monoclonal antibody

Clone ID: 25GB480

Species Reactivity: Human, mouse, rat

Applications Tested: Western blotting (WB)

### Immunogen

A synthesized peptide derived from human CD10

### Isotype

Rabbit IgG

### Storage Buffer

Supplied in PBS (pH 7.4) containing 50% glycerol, and 0.02% sodium azide.

### Storage

Store at -20 °C for one year.

### Recommended Dilutions

Western Blotting (WB): 1:1,000-1:5,000

**Note:** This product is for research use only.

---

#### SUPPORT

SUPPORT@GENUINBIOTECH.COM  
TEL: +1-540-855-7041

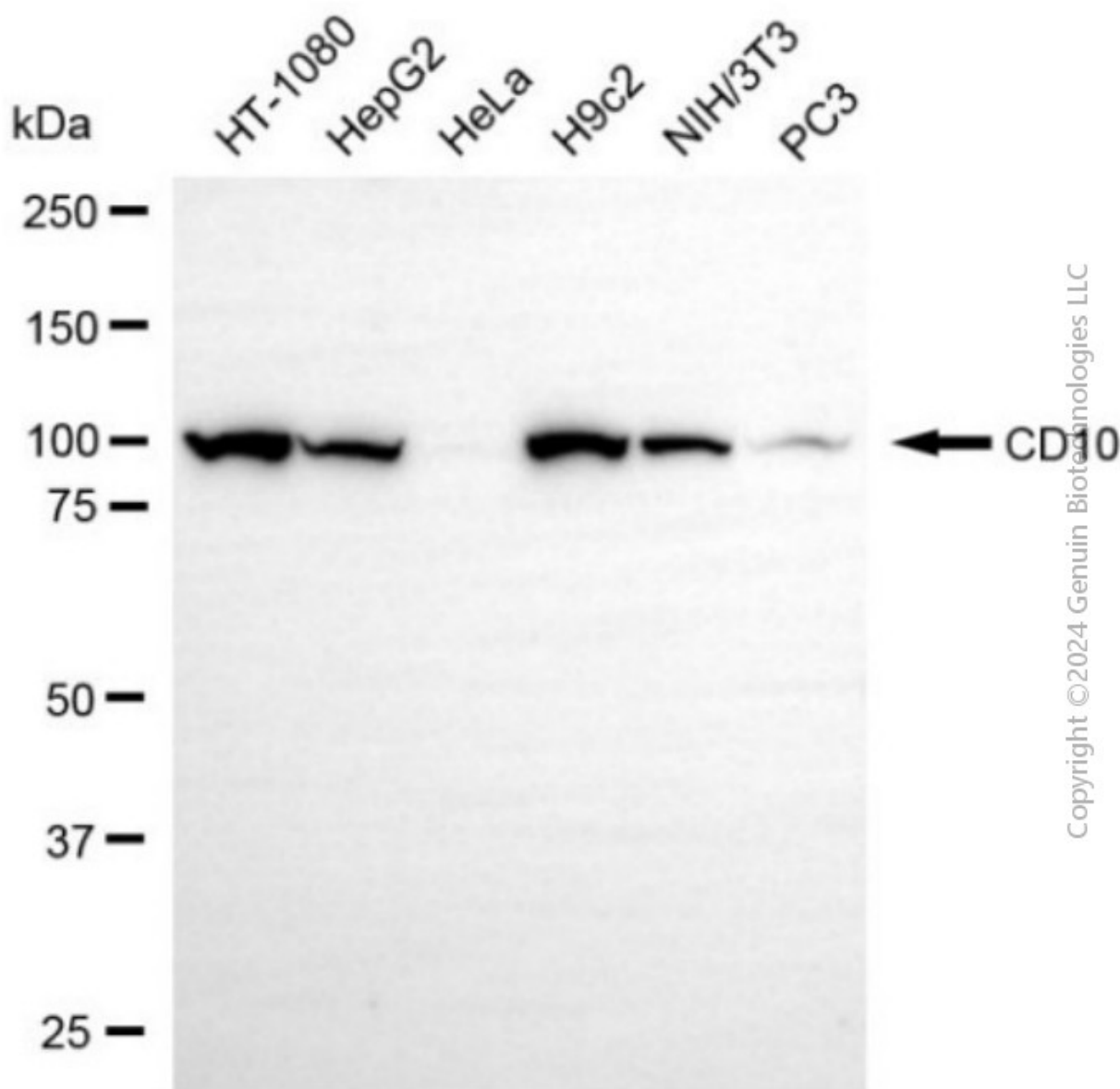
#### ORDERS

SALES@GENUINBIOTECH.COM  
FAX: +1-540-855-7041

[WWW.GENUINBIOTECH.COM](http://WWW.GENUINBIOTECH.COM)

# KD-Validated Anti-Membrane Metalloendopeptidase Recombinant Rabbit Validation Data

PAGE 2



Western blotting analysis using anti-CD10 antibody (Cat#61234). Total cell lysates (30  $\mu$ g) from various cell lines were loaded and separated by SDS-PAGE. The blot was incubated with anti-CD10 antibody (Cat#61234, 1:5,000) and HRP-conjugated goat anti-rabbit secondary antibody (Cat#201, 1:20,000) respectively. Image was developed using NaQ™ ECL Substrate Kit (Cat#716).

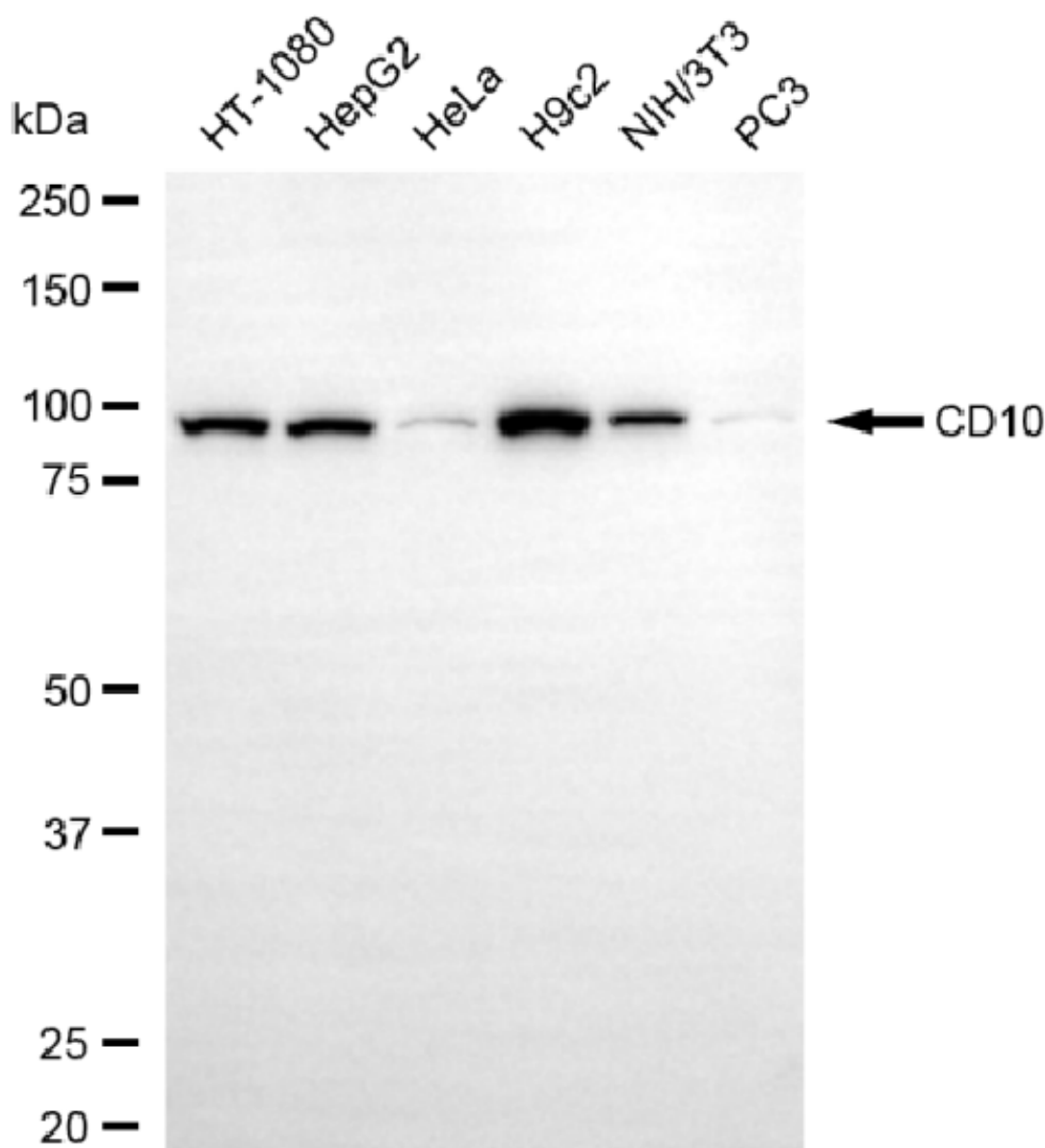
## SUPPORT

SUPPORT@GENUINBIOTECH.COM  
TEL: +1-540-855-7041

## ORDERS

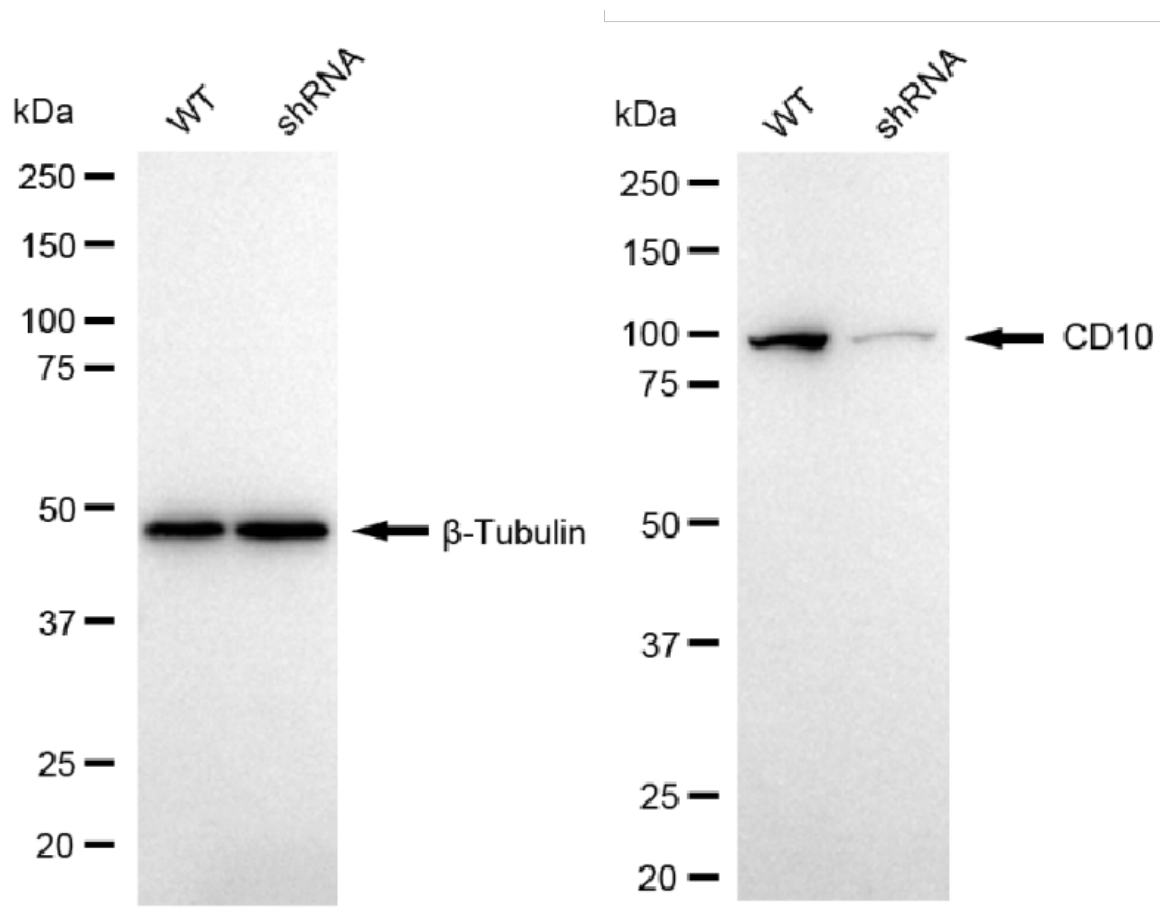
SALES@GENUINBIOTECH.COM  
FAX: +1-540-855-7041

WWW.GENUINBIOTECH.COM



Copyright ©2025 Genuin Biotechnologies LLC

Western blotting analysis using anti-CD10 antibody (Cat#61234). Total cell lysates (30 µg) from various cell lines were loaded and separated by SDS-PAGE. The blot was incubated with anti-CD10 antibody (Cat#61234, 1:5,000) and HRP-conjugated goat anti-rabbit secondary antibody (Cat#201, 1:20,000) respectively. Image was developed using NaQ™ ECL Substrate Kit (Cat#716).



Copyright ©2025 Genuin Biotechnologies LLC

Western blotting analysis using anti-CD10 antibody (Cat#61234). CD10 expression in wild type (WT) and CD10 shRNA knockdown (KD) HeLa cells with 20 µg of total cell lysates. β-Tubulin serves as a loading control. The blot was incubated with anti-CD10 antibody (Cat#61234, 1:5,000) and HRP-conjugated goat anti-rabbit secondary antibody (Cat#201, 1:20,000) respectively. Image was developed using NaQ™ ECL Substrate Kit (Cat#716).