

KD-Validated Anti-Malate dehydrogenase 2 Recombinant Rabbit Monoclonal Antibody



Catalog #: 61237

Aliases

MDH2; Malate Dehydrogenase 2; Malate Dehydrogenase 2, NAD (Mitochondrial); Malate Dehydrogenase, Mitochondrial; EC 1.1.1.37; Testicular Tissue Protein Li 120; MGC:3559; EC 1.1.1; EIEE51; DEE51; M-MDH; MOR1; MDH

Background

Gene Name: MDH2

NCBI Gene Entry: [4191](#)

UniProt Entry: [P40926](#)

Application Information

Molecular Weight: Predicted, 36 kDa, observed, 36 kDa

Clonality: Rabbit monoclonal antibody

Clone ID: 23GB2325

Species Reactivity: Human, mouse, rat

Applications Tested: Western blotting (WB), flow cytometry (FCM), immunocytochemistry (IC)

Immunogen

A synthesized peptide derived from human MDH2

Isotype

Rabbit IgG

Storage Buffer

Supplied in PBS (pH 7.4) containing 50% glycerol, and 0.02% sodium azide.

Storage

Store at -20 °C for one year.

Recommended Dilutions

Western Blotting (WB): 1:1,000-1:5,000

Flow Cytometry (FCM): 1:2,000

Immunocytochemistry (IC): 1:100-1:1,000

Note: This product is for research use only.

SUPPORT

SUPPORT@GENUINBIOTECH.COM
TEL: +1-540-855-7041

ORDERS

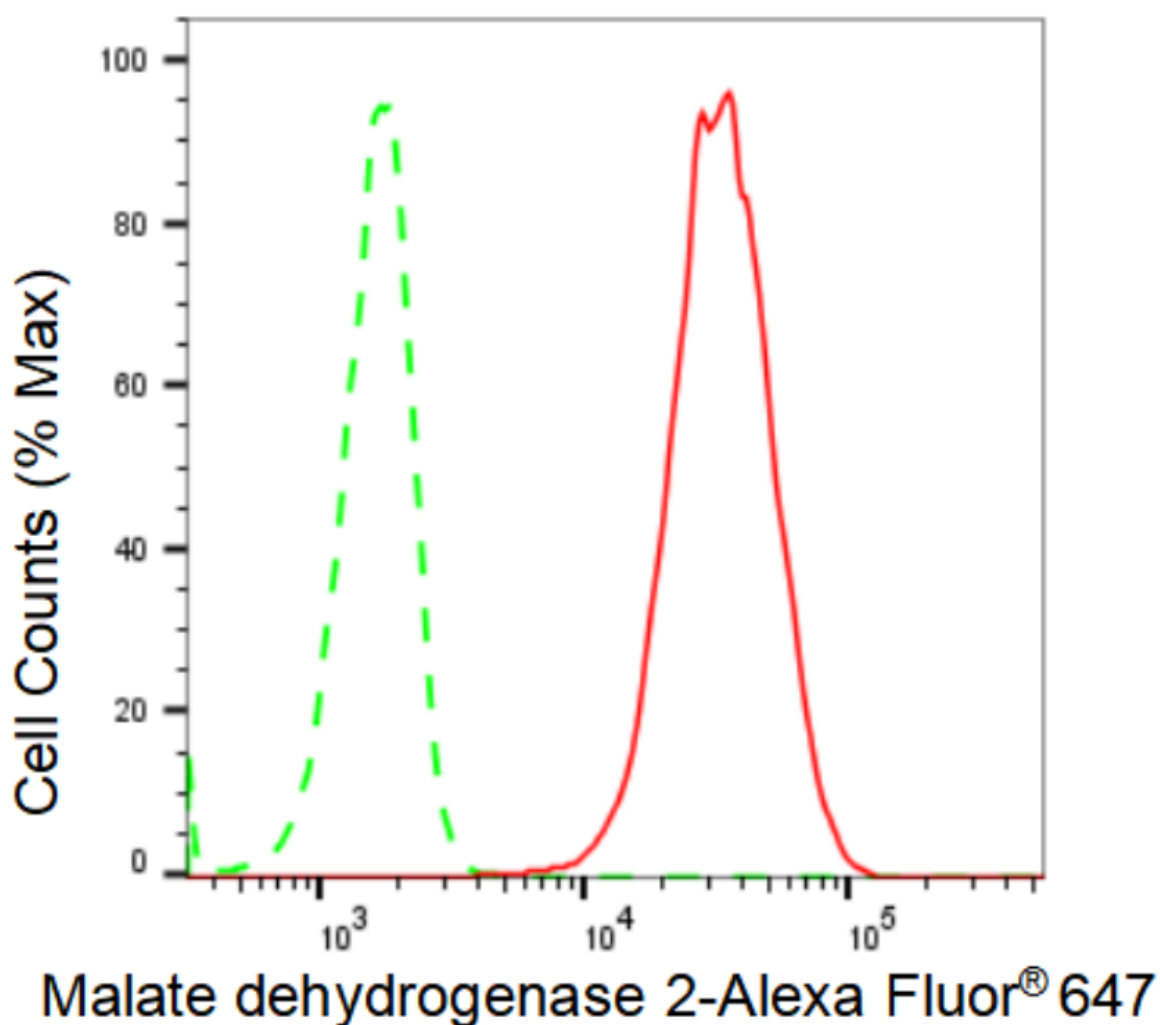
SALES@GENUINBIOTECH.COM
FAX: +1-540-855-7041

WWW.GENUINBIOTECH.COM

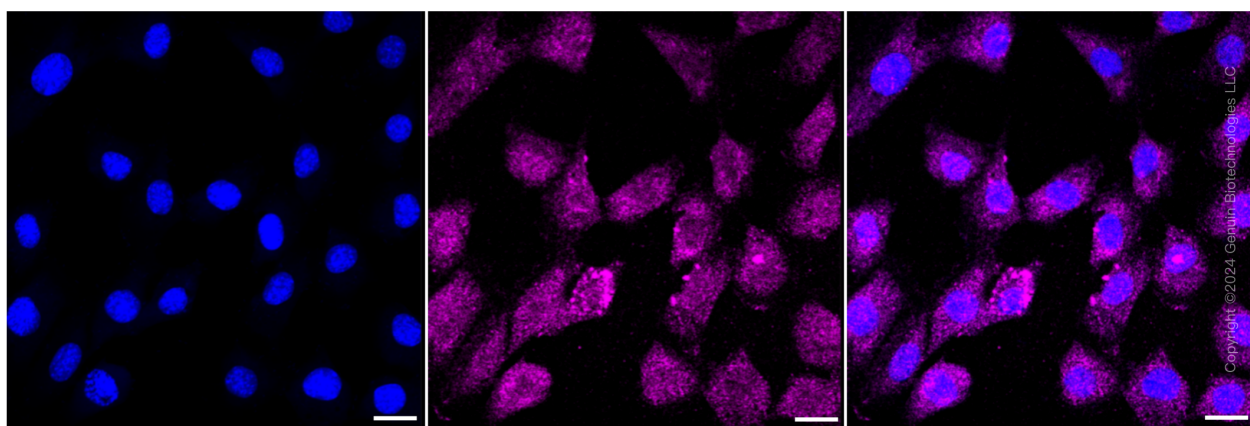
KD-Validated Anti-Malate dehydrogenase 2 Recombinant Rabbit Monoclonal Antibody

PAGE 2

Validation Data



Flow cytometric analysis of Malate dehydrogenase 2 expression in C2C12 cells using Malate dehydrogenase 2 antibody (Cat#61237, 1:2,000). Green, isotype control; red, Malate dehydrogenase 2.



SUPPORT

SUPPORT@GENUINBIOTECH.COM
TEL: +1-540-855-7041

ORDERS

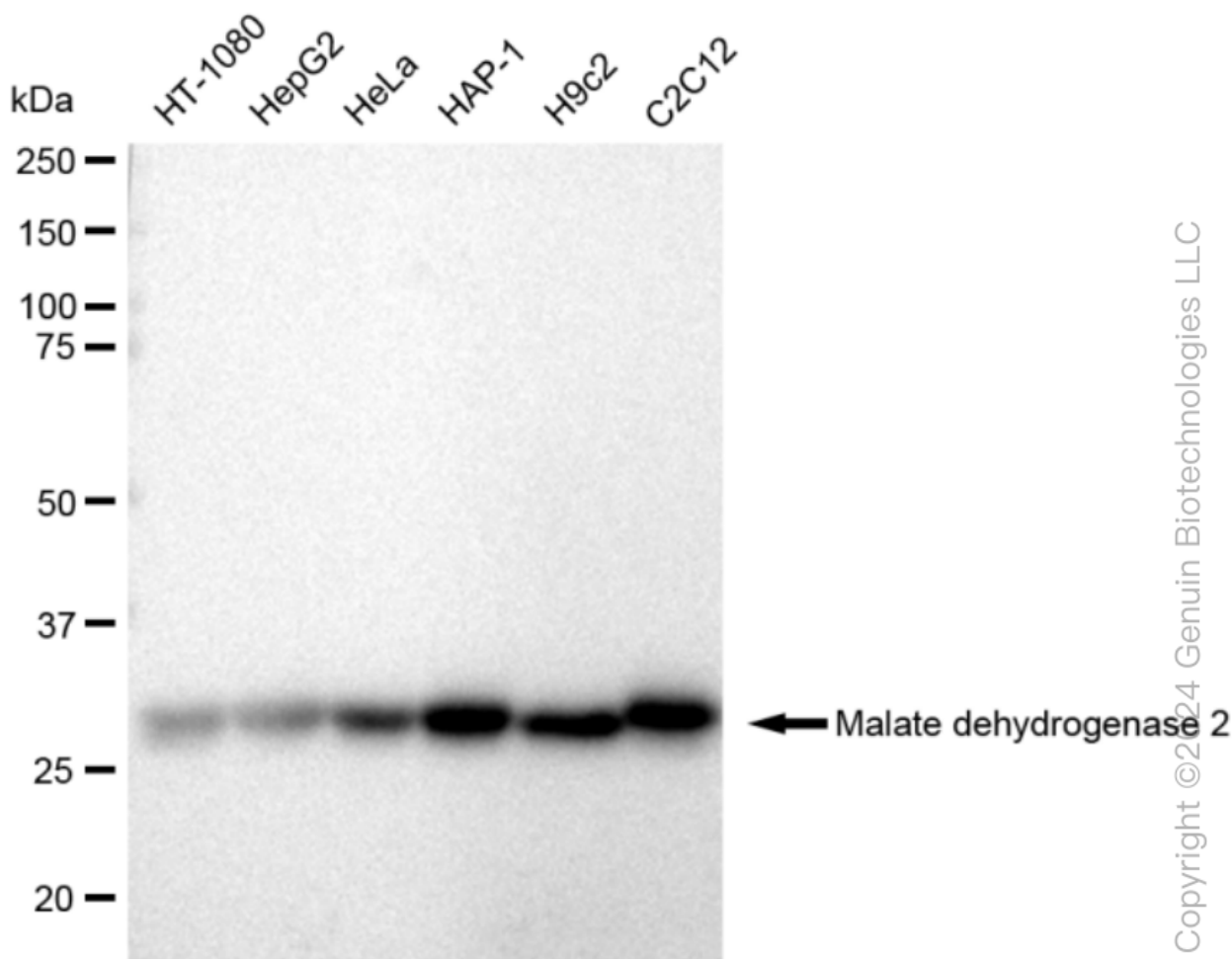
SALES@GENUINBIOTECH.COM
FAX: +1-540-855-7041

WWW.GENUINBIOTECH.COM

KD-Validated Anti-Malate dehydrogenase 2 Recombinant Rabbit Monoclonal Antibody

PAGE 3

Immunocytochemical staining of C2C12 cells with Malate dehydrogenase 2 antibody (Cat#61237, 1:1,000). Nuclei were stained blue with DAPI; Malate dehydrogenase 2 was stained magenta with Alexa Fluor® 647. Images were taken using Leica stellaris 5. Protein abundance based on laser Intensity and smart gain: Low. Scale bar: 20 μ m.



Western blotting analysis using anti-Malate dehydrogenase 2 antibody (Cat#61237). Total cell lysates (30 μ g) from various cell lines were loaded and separated by SDS-PAGE. The blot was incubated with anti-Malate dehydrogenase 2 antibody (Cat#61237, 1:5,000) and HRP-conjugated goat anti-rabbit secondary antibody (Cat#201, 1:20,000) respectively. Image was developed using FeQ™ ECL Substrate Kit (Cat#226).

SUPPORT

SUPPORT@GENUINBIOTECH.COM
TEL: +1-540-855-7041

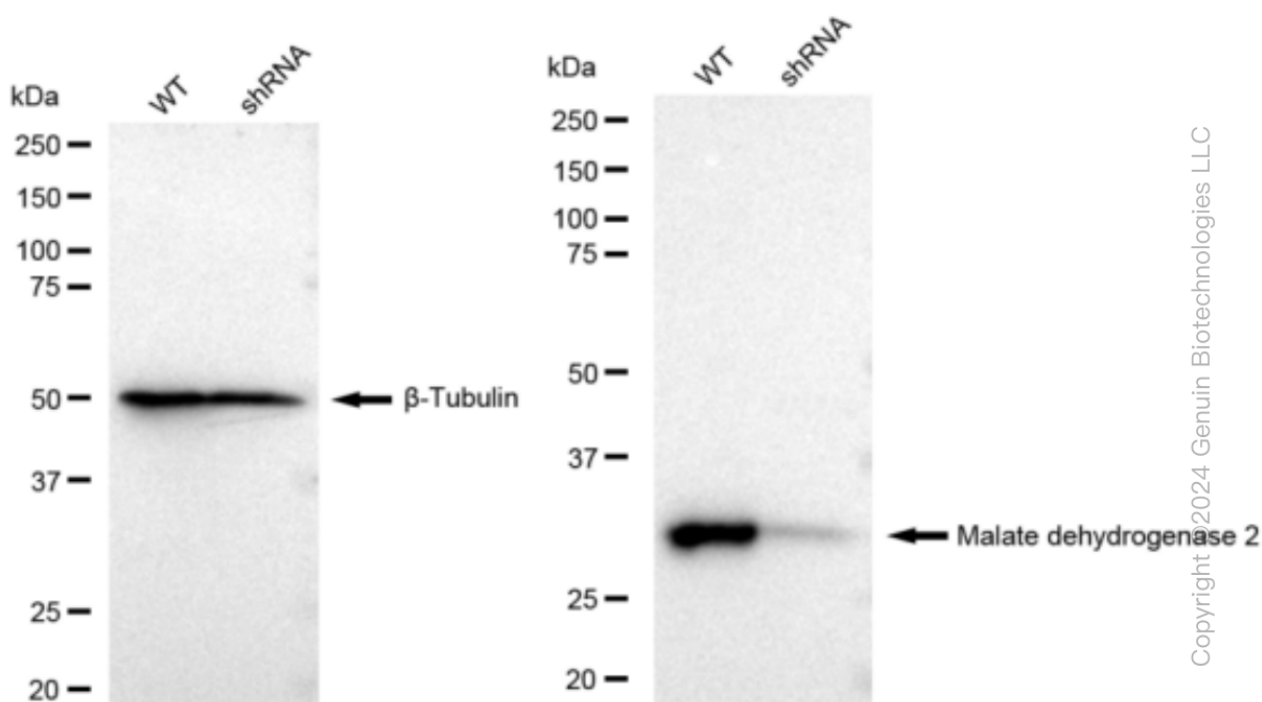
ORDERS

SALES@GENUINBIOTECH.COM
FAX: +1-540-855-7041

WWW.GENUINBIOTECH.COM

KD-Validated Anti-Malate dehydrogenase 2 Recombinant Rabbit Monoclonal Antibody

PAGE 4



Western blotting analysis using anti-Malate dehydrogenase 2 antibody (Cat#61237). Malate dehydrogenase 2 expression in wild type (WT) and malate dehydrogenase 2 shRNA knockdown (KD) HeLa cells with 30 µg of total cell lysates. β-Tubulin serves as a loading control. The blot was incubated with anti-Malate dehydrogenase 2 antibody (Cat#61237, 1:5,000) and HRP-conjugated goat anti-rabbit secondary antibody (Cat#201, 1:20,000) respectively. Image was developed using FeQ™ ECL Substrate Kit (Cat#226).

SUPPORT

SUPPORT@GENUINBIOTECH.COM
TEL: +1-540-855-7041

ORDERS

SALES@GENUINBIOTECH.COM
FAX: +1-540-855-7041

WWW.GENUINBIOTECH.COM