

KD-Validated Anti-CDC42 Recombinant Rabbit Monoclonal Antibody



Catalog #: 61242

Aliases

CDC42; Cell Division Cycle 42; CDC42Hs; G25K; Cell Division Control Protein 42 Homolog; GTP Binding Protein, 25kDa; G25K GTP-Binding Protein; DJ224A6.1.1 (Cell Division Cycle 42 (GTP-Binding Protein, 25kD)); DJ224A6.1.2 (Cell Division Cycle 42 (GTP-Binding Protein, 25kD)); Cell Division Cycle 42 (GTP Binding Protein, 25kDa); Cell Division Cycle 42 (GTP-Binding Protein, 25kD); Small GTP Binding Protein CDC42; Growth-Regulating Protein; EC 3.6.5.2; TKS

Background

Gene Name: CDC42

NCBI Gene Entry: [998](#)

UniProt Entry: [P60953](#)

Application Information

Molecular Weight: Predicted, 21 kDa, observed, 21 kDa

Clonality: Rabbit monoclonal antibody

Clone ID: 23GB740

Species Reactivity: Human, mouse, rat

Applications Tested: Western blotting (WB), flow cytometry (FCM), immunocytochemistry (IC)

Immunogen

A synthetic peptide of human CDC42

Isotype

Rabbit IgG

Storage Buffer

Supplied in PBS (pH 7.4) containing 50% glycerol, and 0.02% sodium azide.

Storage

Store at -20 °C for one year.

Recommended Dilutions

Western Blotting (WB): 1:1,000-1:5,000

Flow Cytometry (FCM): 1:2,000

Immunocytochemistry (IC): 1:100-1:1,000

SUPPORT

SUPPORT@GENUINBIOTECH.COM
TEL: +1-540-855-7041

ORDERS

SALES@GENUINBIOTECH.COM
FAX: +1-540-855-7041

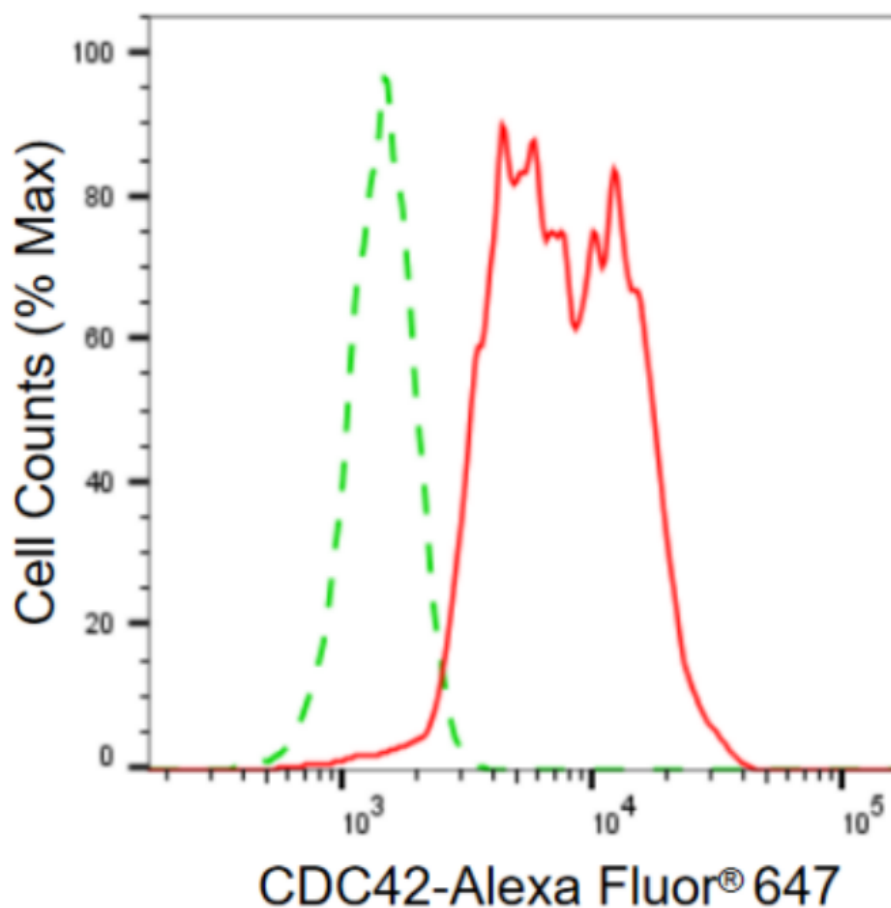
WWW.GENUINBIOTECH.COM

KD-Validated Anti-CDC42 Recombinant Rabbit Monoclonal Antibody

PAGE 2

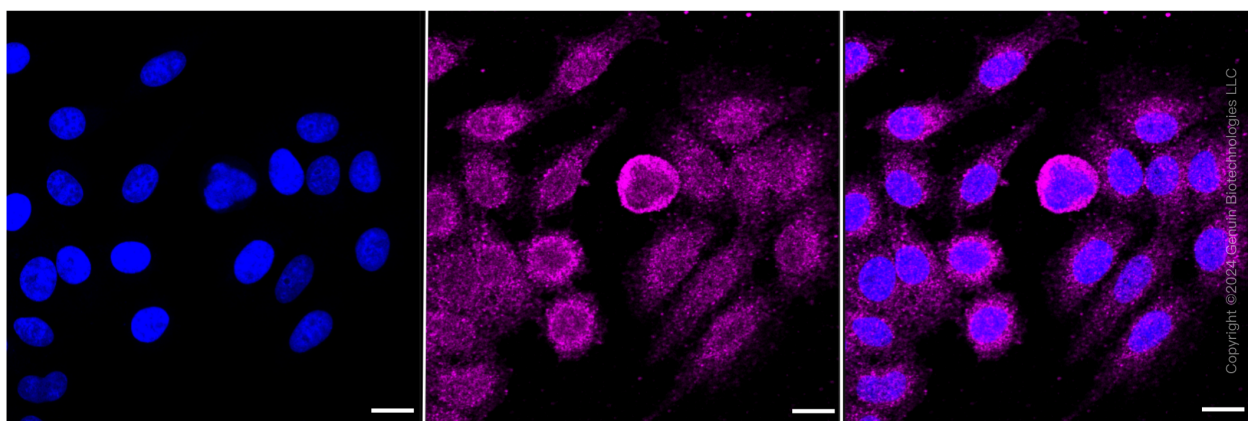
Note: This product is for research use only.

Validation Data



Copyright ©2024 Genuin Biotechnologies LLC

Flow cytometric analysis of CDC42 expression in HepG2 cells using CDC42 antibody (Cat#61242, 1:2,000). Green, isotype control; red, CDC42.



Copyright ©2024 Genuin Biotechnologies LLC

SUPPORT

SUPPORT@GENUINBIOTECH.COM
TEL: +1-540-855-7041

ORDERS

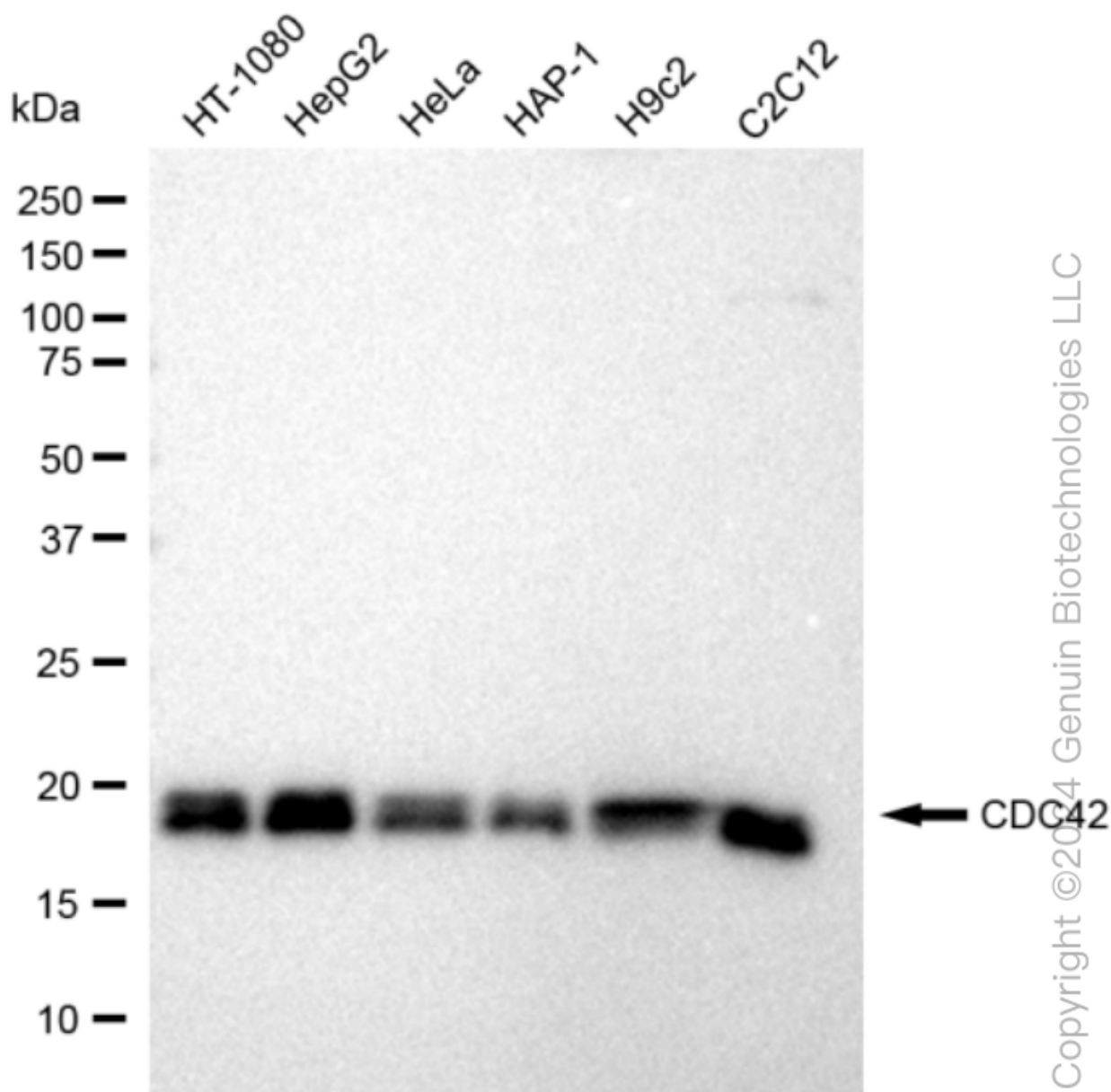
SALES@GENUINBIOTECH.COM
FAX: +1-540-855-7041

WWW.GENUINBIOTECH.COM

KD-Validated Anti-CDC42 Recombinant Rabbit Monoclonal Antibody

PAGE 3

Immunocytochemical staining of HepG2 cells with CDC42 antibody (Cat#61242, 1:1,000). Nuclei were stained blue with DAPI; CDC42 was stained magenta with Alexa Fluor® 647. Images were taken using Leica stellaris 5. Protein abundance based on laser Intensity and smart gain: Medium. Scale bar: 20 μ m.



Western blotting analysis using anti-CDC42 antibody (Cat#61242). Total cell lysates (30 μ g) from various cell lines were loaded and separated by SDS-PAGE. The blot was incubated with anti-CDC42 antibody (Cat#61242, 1:5,000) and HRP-conjugated goat anti-rabbit secondary antibody (Cat#201, 1:50,000) respectively. Image was developed using FeQ™ ECL Substrate Kit (Cat#226).

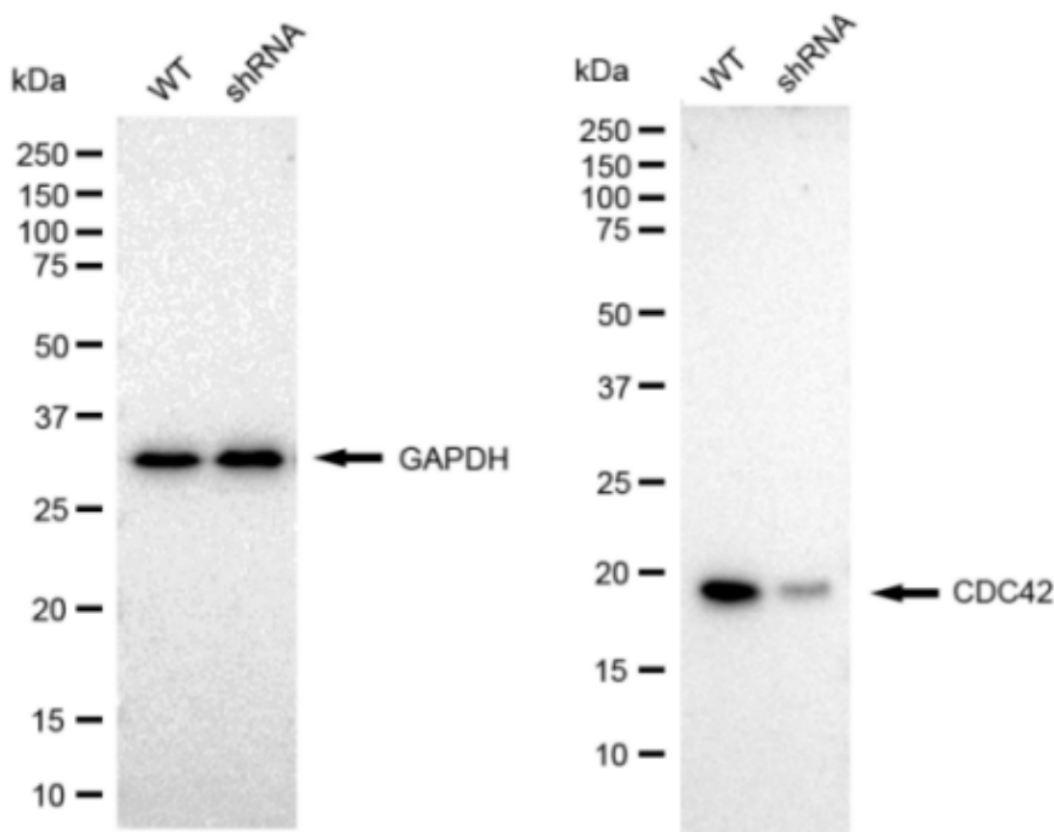
SUPPORT

SUPPORT@GENUINBIOTECH.COM
TEL: +1-540-855-7041

ORDERS

SALES@GENUINBIOTECH.COM
FAX: +1-540-855-7041

WWW.GENUINBIOTECH.COM



Copyright ©2024 Genuin Biotechnologies LLC

Western blotting analysis using anti-CDC42 antibody (Cat#61242). CDC42 expression in wild type (WT) and CDC42 shRNA knockdown (KD) HT-1080 cells with 30 μ g of total cell lysates. GAPDH serves as a loading control. The blot was incubated with anti-CDC42 antibody (Cat#61242, 1:5,000) and HRP-conjugated goat anti rabbit secondary antibody (Cat#201, 1:50,000) respectively. Image was developed using FeQ™ ECL Substrate Kit (Cat#226).