

KD-Validated Anti-STUB1 Recombinant Rabbit Monoclonal Antibody



Catalog #: 61243

Aliases

STUB1; STIP1 Homology And U-Box Containing Protein 1; CHIP; SDCCAG7; HSPABP2; NY-CO-7; UBOX1; Carboxy Terminus Of Hsp70-Interacting Protein ; RING-Type E3 Ubiquitin; Transferase CHIP; E3 Ubiquitin-Protein Ligase CHIP; CLL-Associated Antigen KW-8; Antigen NY-CO-7; STIP1 Homology And U-Box Containing Protein 1, E3 Ubiquitin Protein Ligase; Heat Shock Protein A Binding Protein 2 (C-Terminal); STIP1 Homology And U Box-Containing Protein 1; Serologically Defined Colon Cancer Antigen 7; EC 2.3.2.27; SCAR16; SCA48

Background

Gene Name: STUB1

NCBI Gene Entry: [10273](#)

UniProt Entry: [Q9UNE7](#)

Application Information

Molecular Weight: Predicted, 35 kDa, observed, 35 kDa

Clonality: Rabbit monoclonal antibody

Clone ID: 23GB2345

Species Reactivity: Human, mouse, rat

Applications Tested: Western blotting (WB), flow cytometry (FCM), immunocytochemistry (IC)

Immunogen

A synthesized peptide derived from human STUB1

Isotype

Rabbit IgG

Storage Buffer

Supplied in PBS (pH 7.4) containing 50% glycerol, and 0.02% sodium azide.

Storage

Store at -20 °C for one year.

Recommended Dilutions

Western Blotting (WB): 1:1,000-1:5,000

Flow Cytometry (FCM): 1:2,000

Immunocytochemistry (IC): 1:100-1:1,000

SUPPORT

SUPPORT@GENUINBIOTECH.COM
TEL: +1-540-855-7041

ORDERS

SALES@GENUINBIOTECH.COM
FAX: +1-540-855-7041

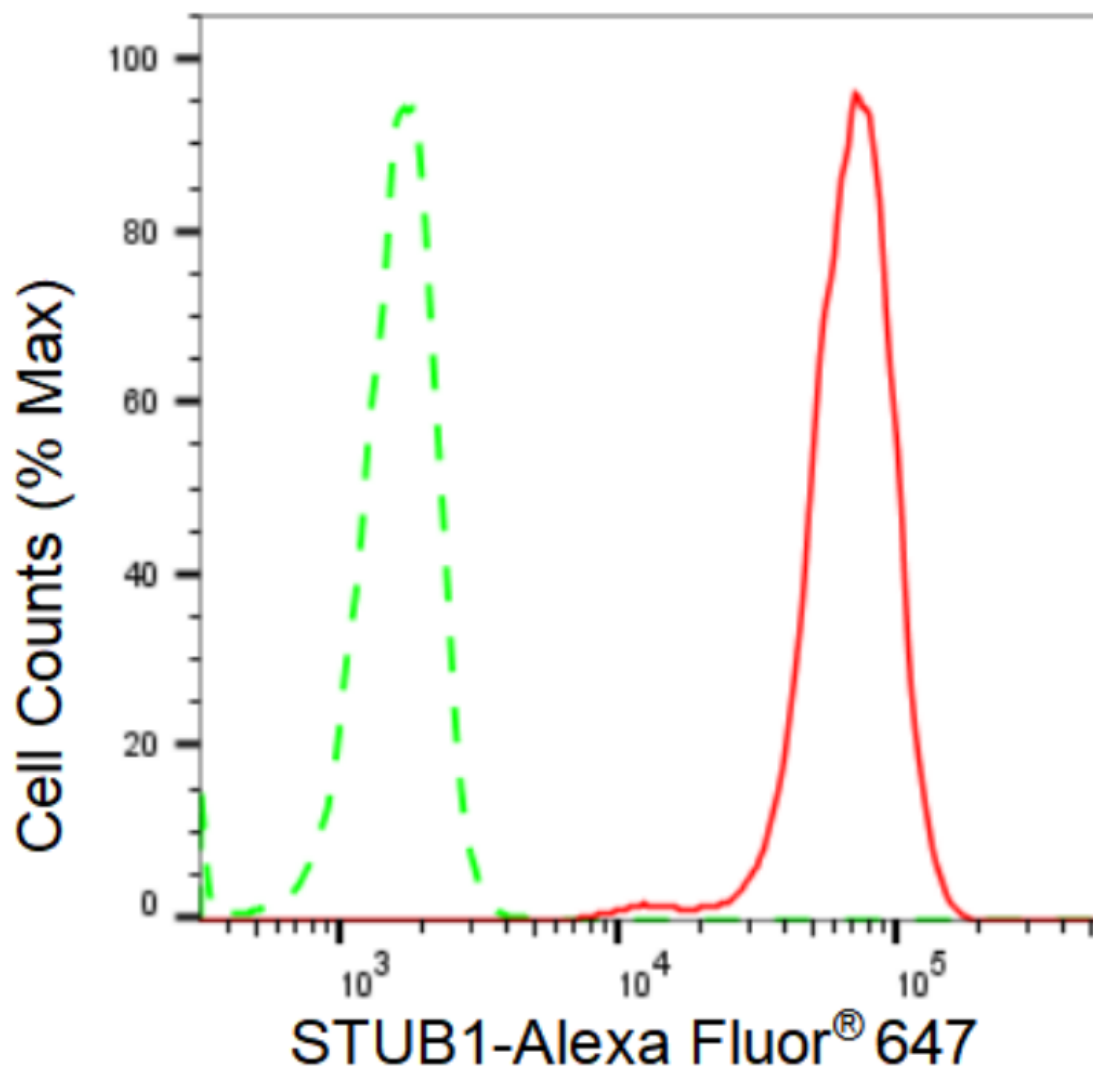
WWW.GENUINBIOTECH.COM

KD-Validated Anti-STUB1 Recombinant Rabbit Monoclonal Antibody

PAGE 2

Note: This product is for research use only.

Validation Data



Copyright ©2024 Genuin Biotechnologies LLC

Flow cytometric analysis of STUB1 expression in C2C12 cells using STUB1 antibody (Cat#61243, 1:2,000). Green, isotype control; red, STUB1.

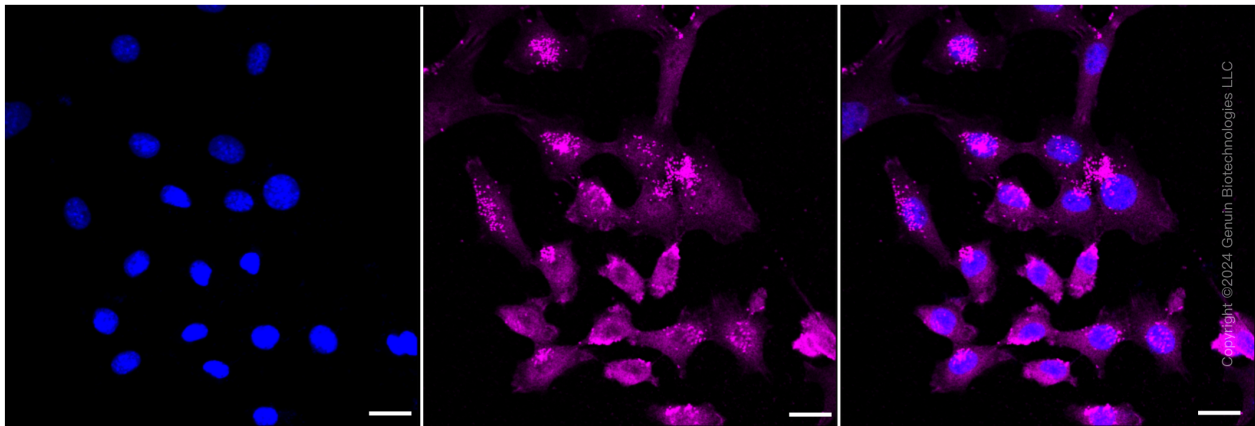
SUPPORT

SUPPORT@GENUINBIOTECH.COM
TEL: +1-540-855-7041

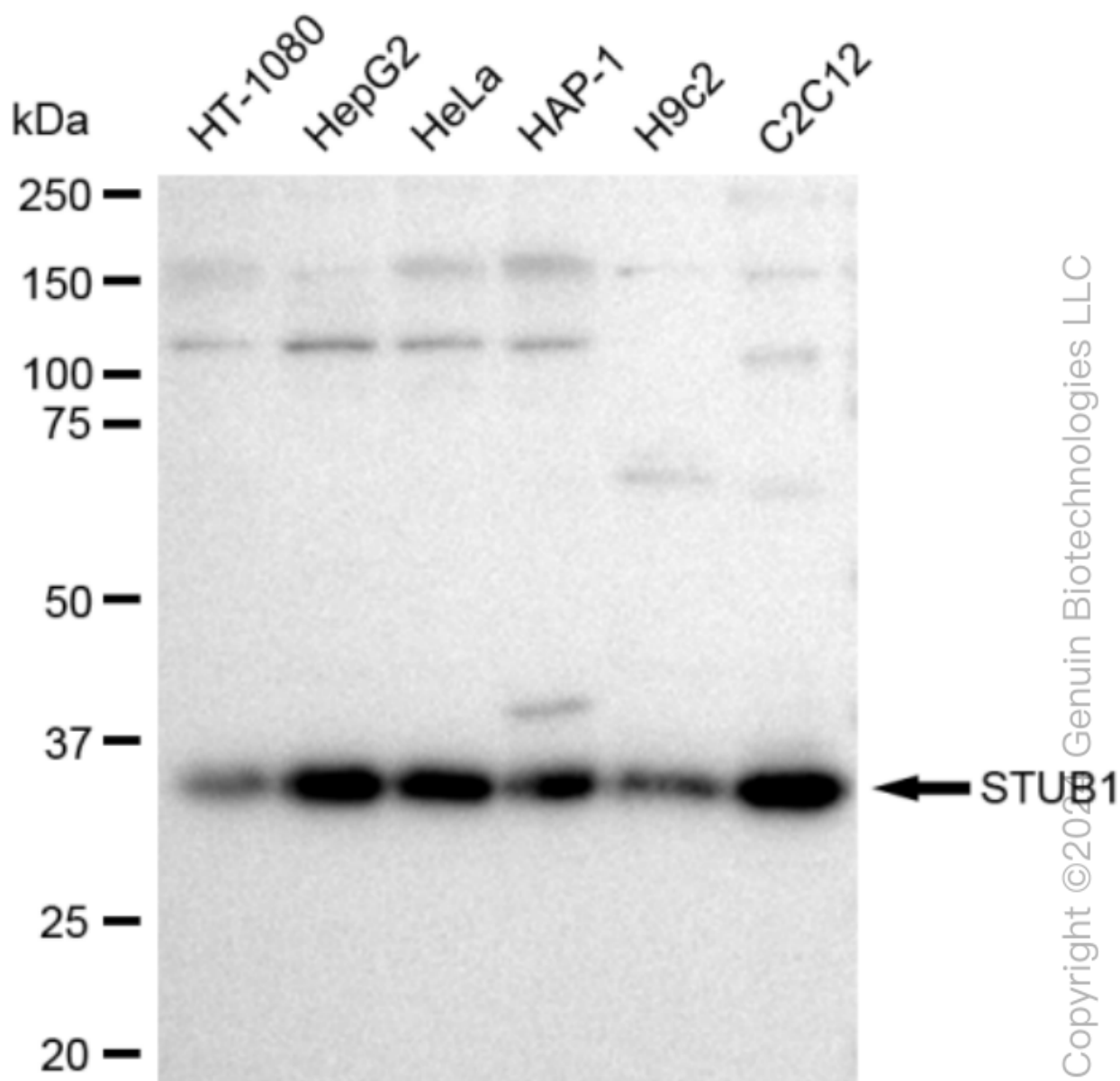
ORDERS

SALES@GENUINBIOTECH.COM
FAX: +1-540-855-7041

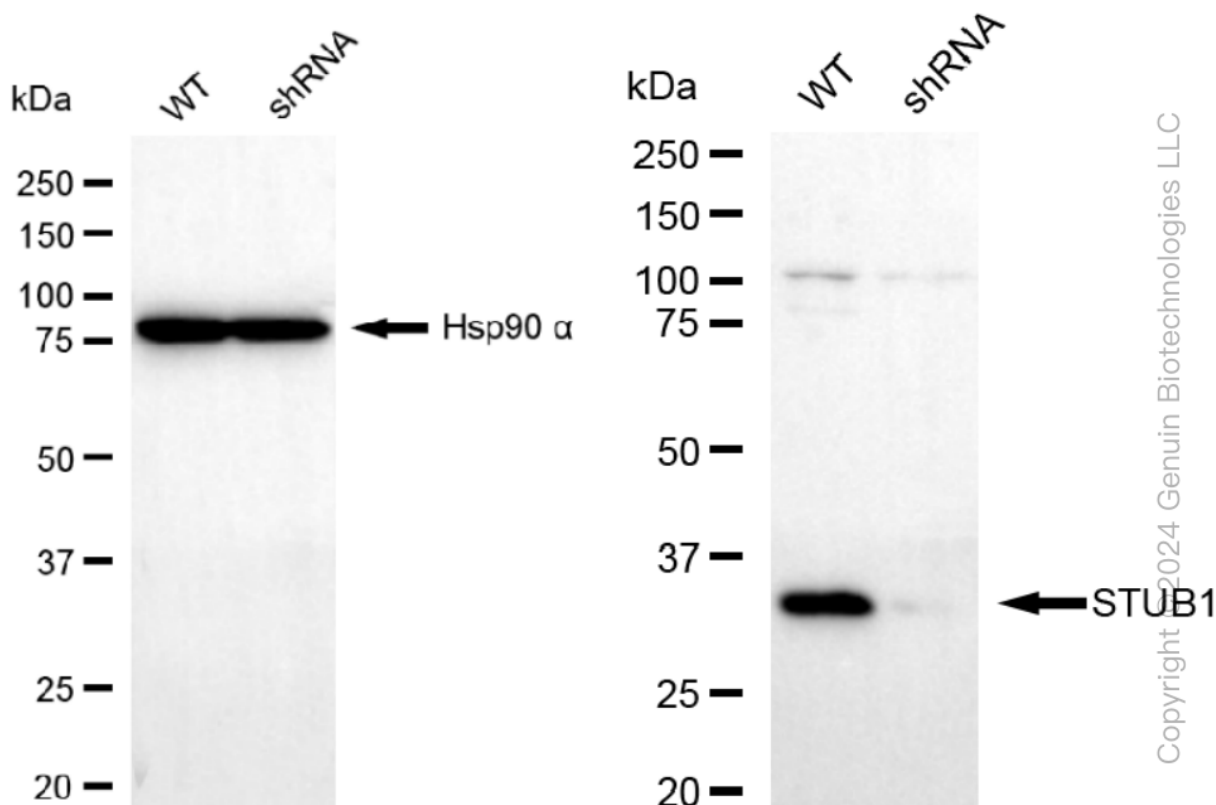
WWW.GENUINBIOTECH.COM



Immunocytochemical staining of C2C12 cells with STUB1 antibody (Cat#61243, 1:1,000). Nuclei were stained blue with DAPI; STUB1 was stained magenta with Alexa Fluor® 647. Images were taken using Leica stellaris 5. Protein abundance based on laser Intensity and smart gain: Medium. Scale bar: 20 μ m.



Western blotting analysis using anti-STUB1 antibody (Cat#61243). Total cell lysates (30 µg) from various cell lines were loaded and separated by SDS-PAGE. The blot was incubated with anti-STUB1 antibody (Cat#61243, 1:5,000) and HRP-conjugated goat anti-rabbit secondary antibody (Cat#201, 1:20,000) respectively. Image was developed using FeQ™ ECL Substrate Kit (Cat#226).



Western blotting analysis using anti-STUB1 antibody (Cat#61243). STUB1 expression in wild type (WT) and STUB1 shRNA knockdown (KD) HeLa cells with 30 µg of total cell lysates. β-Tubulin serves as a loading control. The blot was incubated with anti-STUB1 antibody (Cat#61243, 1:5,000) and HRP-conjugated goat anti-rabbit secondary antibody (Cat#201, 1:20,000) respectively. Image was developed using FeQ™ ECL Substrate Kit (Cat#226).