

# KD-Validated Anti-CSNK1E mouse Monoclonal Antibody



**Catalog #: 61250**

## Aliases

CSNK1E; Casein Kinase 1 Epsilon; CKIepsilon; HCKIE; CKIE; Casein Kinase I Isoform Epsilon; EC 2.7.11.1; Casein Kinase 1, Epsilon; CKI-Epsilon; EC 2.7.11; CKIe

## Background

Gene Name: CSNK1E

NCBI Gene Entry: [1454](#)

UniProt Entry: [P49674](#)

## Application Information

Molecular Weight: Predicted, 47 kDa, observed, 43 kDa

Clonality: Mouse monoclonal antibody

Clone ID: 25GB490

Species Reactivity: Human, mouse, rat

Applications Tested: Western blotting (WB), flow cytometry (FCM), immunocytochemistry (IC)

## Immunogen

Recombinant protein of human CSNK1E

## Isotype

Mouse IgG1

## Storage Buffer

Supplied in PBS (pH 7.4) containing 50% glycerol, and 0.02% sodium azide.

## Storage

Store at -20 °C for one year.

## Recommended Dilutions

Western Blotting (WB): 1:1,000-1:2,500

Flow Cytometry (FCM): 1:2,000

Immunocytochemistry (IC): 1:100-1:1,000

**Note:** This product is for research use only.

## Validation Data

---

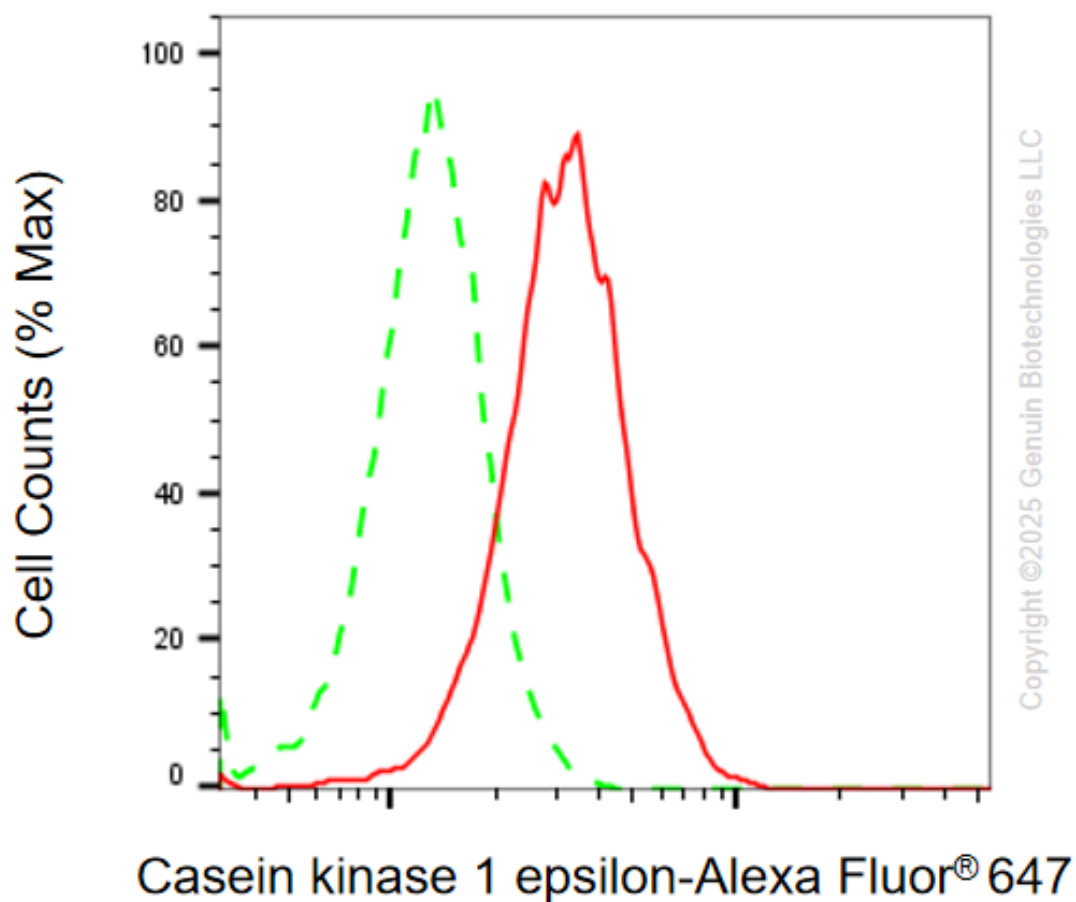
### SUPPORT

SUPPORT@GENUINBIOTECH.COM  
TEL: +1-540-855-7041

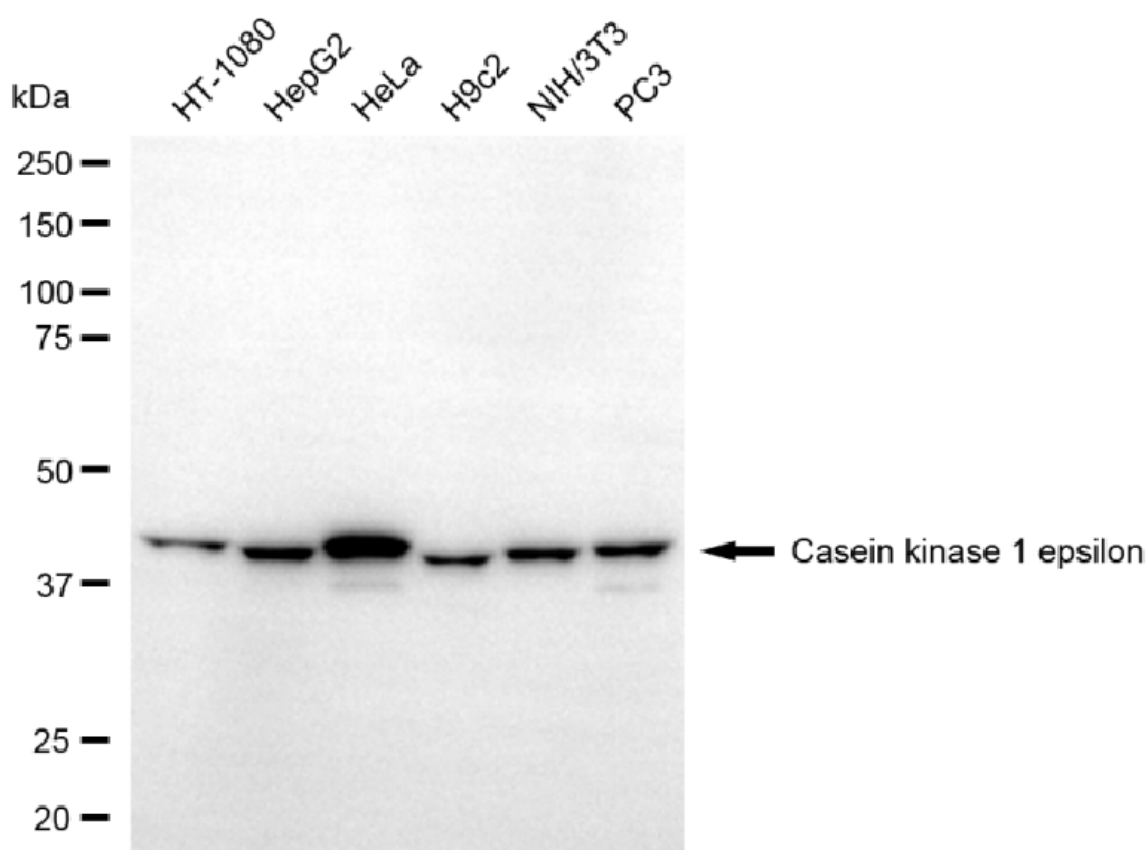
### ORDERS

SALES@GENUINBIOTECH.COM  
FAX: +1-540-855-7041

[WWW.GENUINBIOTECH.COM](http://WWW.GENUINBIOTECH.COM)

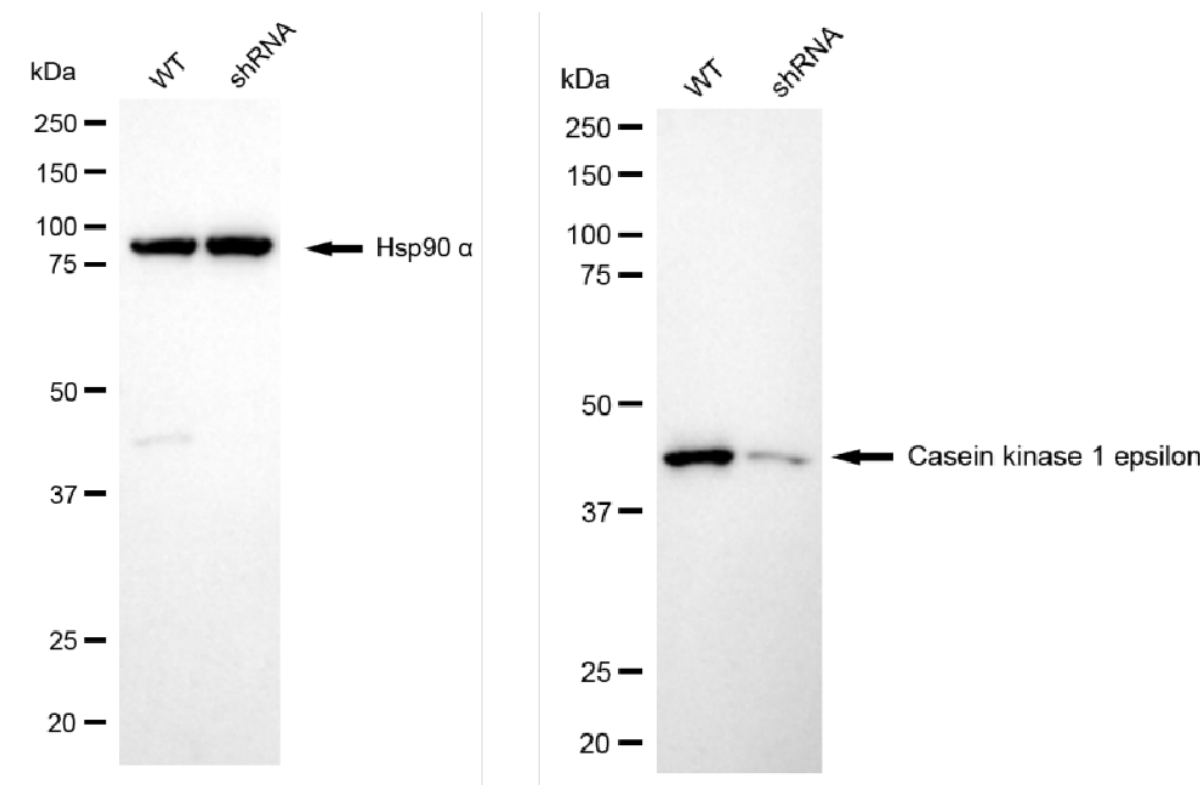


Flow cytometric analysis of Casein kinase 1 epsilon expression in HT-1080 cells using anti-Casein kinase 1 epsilon antibody (Cat# 61250, 1:2,000). Green, isotype control; red, Casein kinase 1 epsilon.



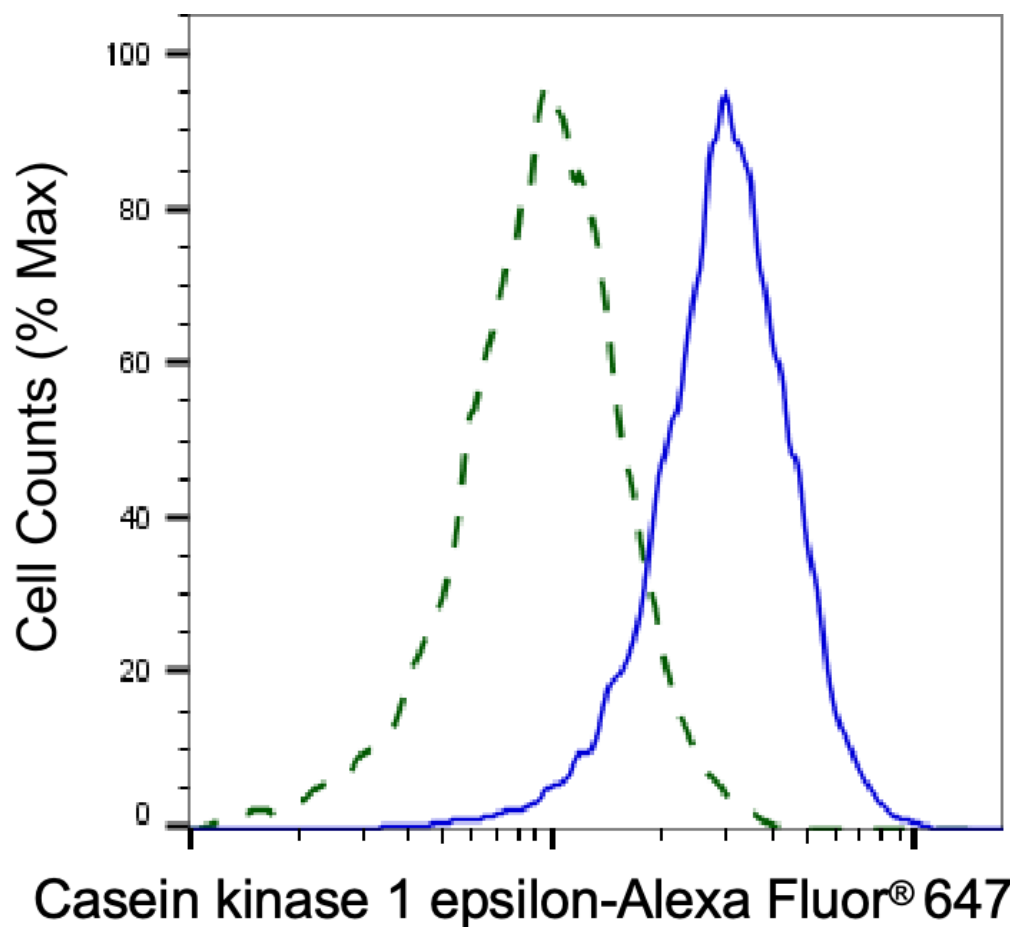
Copyright ©2025 Genuin Biotechnologies LLC

Western blotting analysis using anti-casein kinase 1 epsilon antibody (Cat#61250). Total cell lysates (30  $\mu$ g) from various cell lines were loaded and separated by SDS-PAGE. The blot was incubated with anti-casein kinase 1 epsilon antibody (Cat#61250, 1:2,500) and HRP-conjugated goat anti-mouse secondary antibody (Cat#101, 1:20,000) respectively. Image was developed using FeQ™ ECL Substrate Kit (Cat#226).



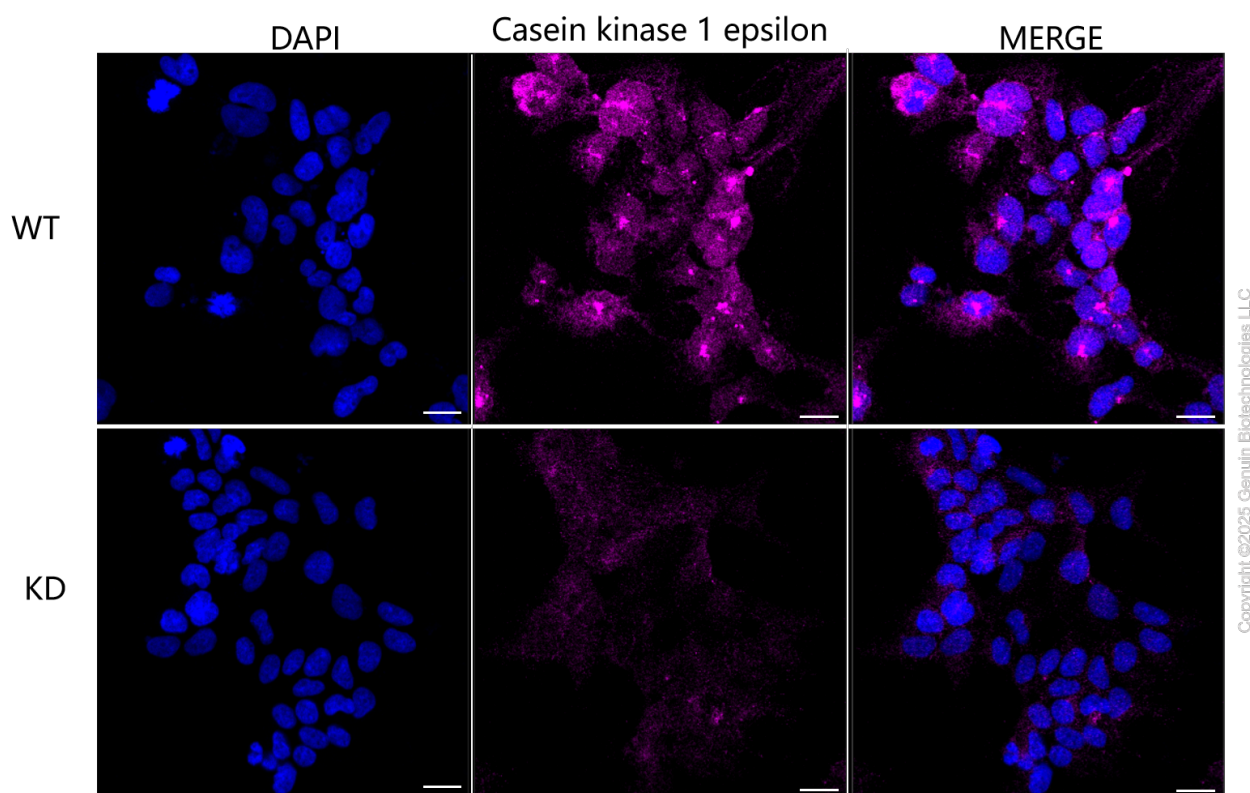
Copyright ©2025 Genuin Biotechnologies LLC

Western blotting analysis using anti-casein kinase 1 epsilon antibody (Cat#61250). Casein kinase 1 epsilon expression in wild type (WT) and casein kinase 1 epsilon (CSNK1E) shRNA knockdown (KD) HeLa cells with 20 µg of total cell lysates. Hsp90 α serves as a loading control. The blot was incubated with anti-casein kinase 1 epsilon antibody (Cat#61250, 1:2,500) and HRP-conjugated goat anti-mouse secondary antibody (Cat#101, 1:20,000) respectively. Image was developed using FeQ™ ECL Substrate Kit (Cat#226).



Copyright ©2025 Genuin Biotechnologies LLC

Validation of Casein kinase 1 epsilon knockdown using flow cytometry. Wild-type(WT, Blue) and knockdown(KD, Green) HeLa cells were stained with anti-Casein kinase 1 epsilon antibody (Cat#61250, 1:2,000) and analyzed using BD flow cytometer.



Immunocytochemical staining of HeLa cells using anti-Casein kinase 1 epsilon antibody (Cat#61250, 1:1,000), Top panel: wild-type (WT); Bottom panel: Casein kinase 1 epsilon shRNA knockdown (KD). Nuclei were stained blue with DAPI; Casein kinase 1 epsilon was stained magenta with Alexa Fluor® 647. Scale bar, 20  $\mu$ m.