

KD-Validated Anti-Adenylosuccinate Lyase Mouse Monoclonal Antibody



Catalog #: 61256

Aliases

ADSL; Adenylosuccinate Lyase; Adenylosuccinase; EC 4.3.2.2; AMPS; ASL; EC 4.3.2; ASASE; ASase

Background

Gene Name: ADSL

NCBI Gene Entry: [158](#)

UniProt Entry: [P30566](#)

Application Information

Molecular Weight: Predicted, 55 kDa, observed, 48 kDa

Clonality: Mouse monoclonal antibody

Clone ID: 25GB595

Species Reactivity: Human, rat

Applications Tested: Western blotting (WB), flow cytometry (FCM)

Immunogen

Recombinant protein of human ADSL

Isotype

Mouse IgG1

Storage Buffer

Supplied in PBS (pH 7.4) containing 50% glycerol, and 0.02% sodium azide.

Storage

Store at -20 °C for one year.

Recommended Dilutions

Western Blotting (WB): 1:2,500-1:5,000

Flow Cytometry (FCM): 1:2,000

Note: This product is for research use only.

Validation Data

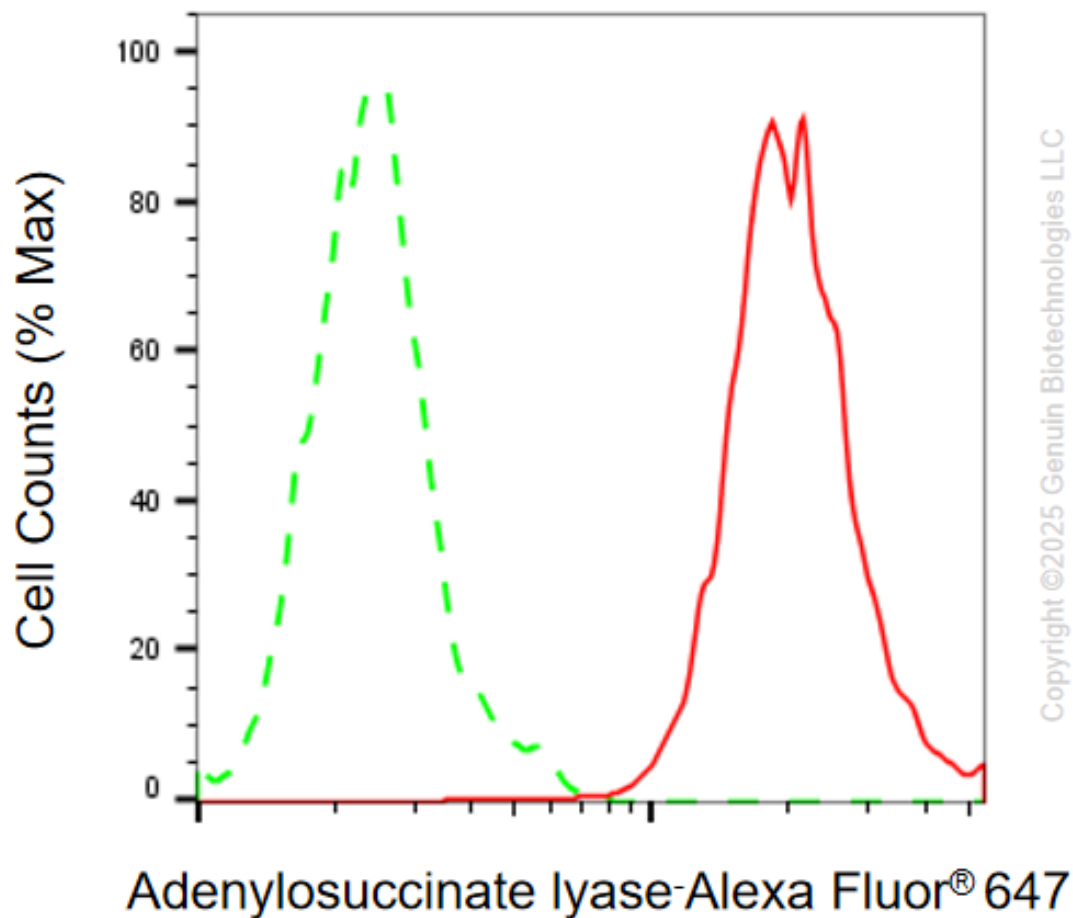
SUPPORT

SUPPORT@GENUINBIOTECH.COM
TEL: +1-540-855-7041

ORDERS

SALES@GENUINBIOTECH.COM
FAX: +1-540-855-7041

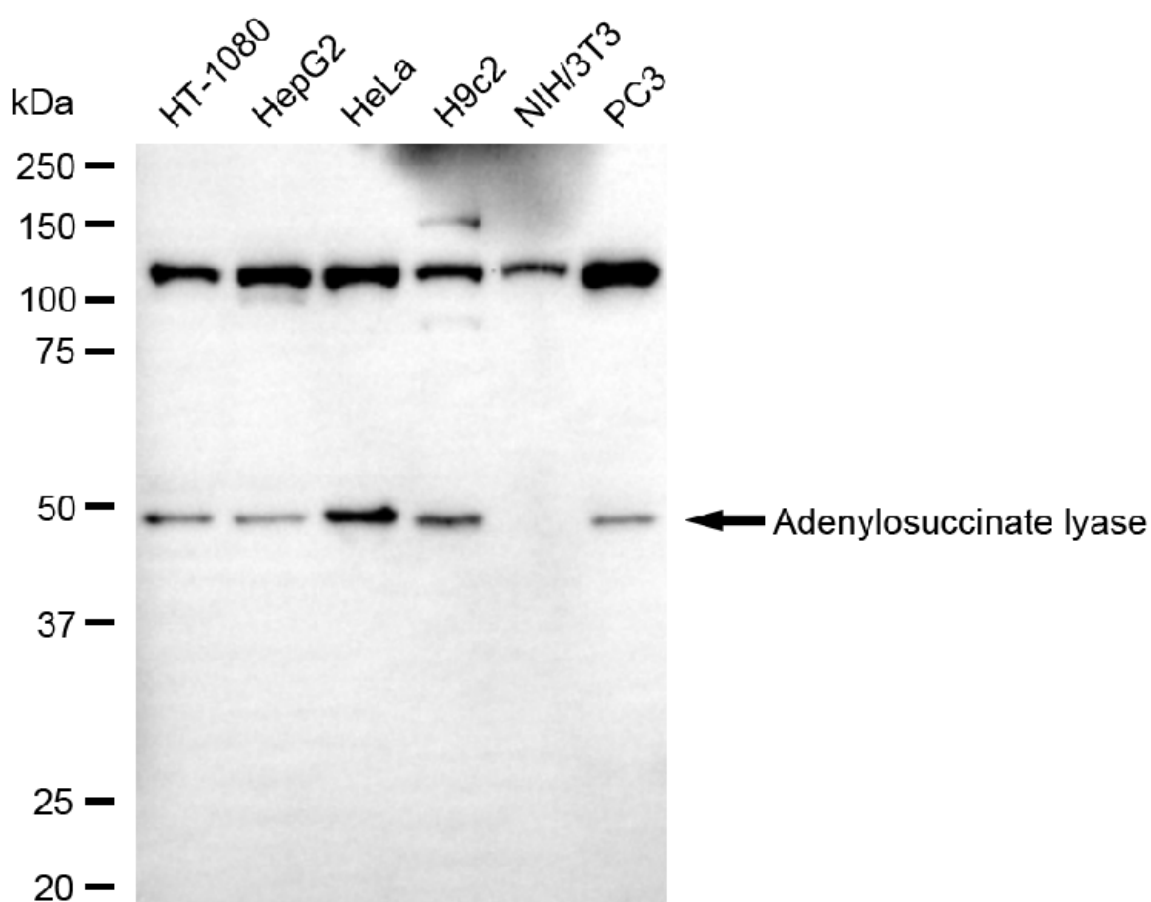
WWW.GENUINBIOTECH.COM



Flow cytometric analysis of Adenylosuccinate lyase expression in HeLa cells using anti-Adenylosuccinate lyase antibody (Cat# 61256, 1:2,000). Green, isotype control; red, Adenylosuccinate lyase.

KD-Validated Anti-Adenylosuccinate Lyase Mouse Monoclonal Antibody

PAGE 3



Copyright ©2025 Genuin Biotechnologies LLC

Western blotting analysis using anti-adenylosuccinate lyase antibody (Cat#61256). Total cell lysates (30 µg) from various cell lines were loaded and separated by SDS-PAGE. The blot was incubated with anti-adenylosuccinate lyase antibody (Cat#61256, 1:5,000) and HRP-conjugated goat anti-mouse secondary antibody (Cat#101, 1:20,000) respectively. Image was developed using FeQ™ ECL Substrate Kit (Cat#226).

SUPPORT

SUPPORT@GENUINBIOTECH.COM
TEL: +1-540-855-7041

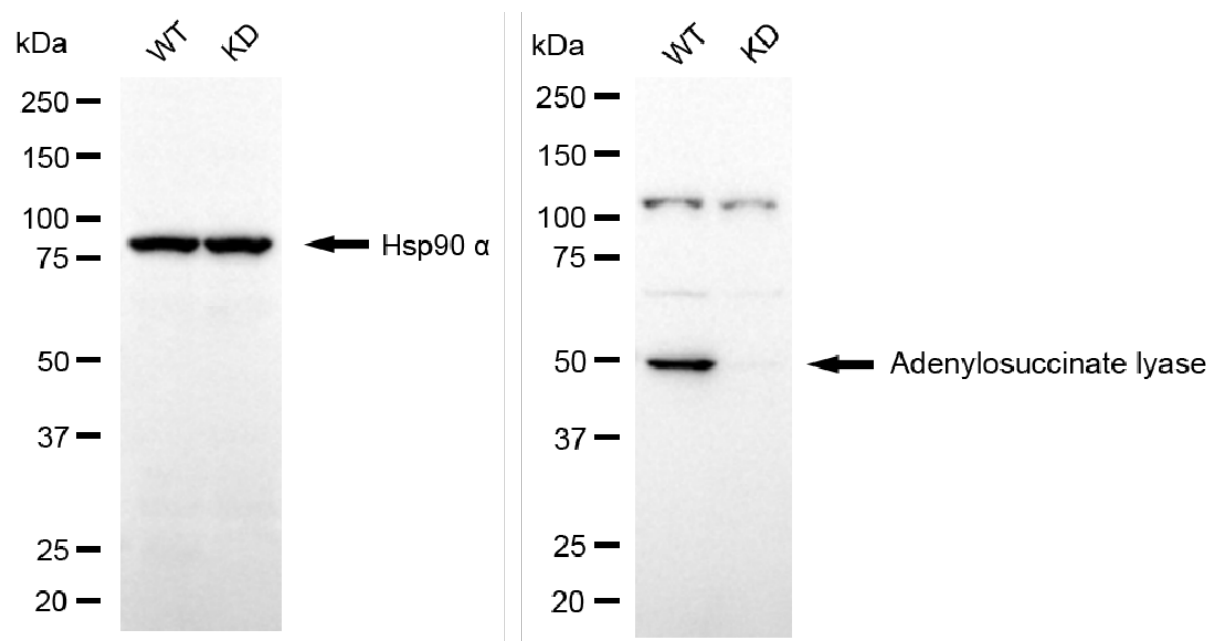
ORDERS

SALES@GENUINBIOTECH.COM
FAX: +1-540-855-7041

WWW.GENUINBIOTECH.COM

KD-Validated Anti-Adenylosuccinate Lyase Mouse Monoclonal Antibody

PAGE 4



Copyright ©2025 Genuin Biotechnologies LLC

Western blotting analysis using anti-adenylosuccinate lyase antibody (Cat#61256).

Adenylosuccinate lyase expression in wild type (WT) and adenylosuccinate lyase (ADSL) knockdown (KD) HSHC cells with 20 µg of total cell lysates. Hsp90 α serves as a loading control. The blot was incubated with anti-adenylosuccinate lyase antibody (Cat#61256, 1:5,000) and HRP-conjugated goat anti-mouse secondary antibody (Cat#101, 1:20,000) respectively. Image was developed using FeQ™ ECL Substrate Kit (Cat#226).

SUPPORT

SUPPORT@GENUINBIOTECH.COM
TEL: +1-540-855-7041

ORDERS

SALES@GENUINBIOTECH.COM
FAX: +1-540-855-7041

WWW.GENUINBIOTECH.COM